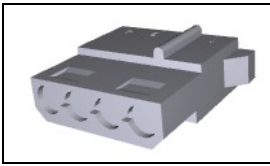


## 770827-1 Product Details

[Share](#) [Print](#) [Email](#)



**770827-1**

TE Internal Number: 770827-1  
✔ Active

[View 3D PDF](#)

### .200" Centerline, 250 V, 13 A max.

✔ Always EU RoHS/ELV Compliant (Statement of Compliance)

#### Product Highlights:

- Commercial MATE-N-LOK Product Line
- Wire-to-Wire
- Applies To Wire/Cable
- Connector
- Housing

[View all Features](#)

#### Quick Links

- ▶ [Pricing & Availability](#)
- ▶ [Search for Tooling](#)
- ▶ [View Mating Products \(10\)](#)
- ▶ [View Contacts \(139\)](#)
- ▶ [Product Feature Selector](#)
- ▶ [Contact Us About This Product](#)

[Add to My Part List](#) [Request Sample](#) [Find Similar Products](#) [Buy Product](#)

### Documentation & Additional Information

#### Product Drawings:

- [PLUG, 4 CIRCUIT, MATE-N-LOK\(TM\)](#) (PDF, English)

#### Catalog Pages/Data Sheets:

- [SOFT\\_SHELL\\_PIN\\_SOCKET\\_CONNECTORS\\_STANDARD\\_DENSITY](#) (PDF, English)

#### Product Specifications:

- None Available

#### Application Specifications:

- [Commercial MATE-N-LOK Pin And Socket Contacts](#) (PDF, English)

#### Instruction Sheets:

- None Available

#### CAD Files: [\(CAD Format & Compression Information\)](#)

- [2D Drawing](#) (DXF, Version B)
- [3D Model](#) (IGES, Version B)
- [3D Model](#) (STEP, Version B)

[List all Documents](#)

#### Additional Information:

- [Product Line Information](#)

#### Related Products:

- [Tooling](#)
- [Mating Products \(10\)](#)
- [Contacts \(139\)](#)

### Product Features (Please use the Product Drawing for all design activity)

#### Product Type Features:

- Product Line = Commercial MATE-N-LOK
- Product Type = Connector
- Connector Type = Housing
- Sealed = No
- UL File Number = E28476
- CSA File Number = LR 16455

#### Mechanical Attachment:

- Mating Retention Type = Detent Lock
- Panel Mount Retention = Without

#### Electrical Characteristics:

- Operating Voltage Reference = AC
- Operating Voltage (VAC) = 250

#### Body Features:

- Mating Retention = With

#### Contact Features:

- Contact Type = Socket
- Contact Layout = In-Line

#### Housing Features:

- Connector Style = Socket (Plug)
- Housing Color = White
- Centerline (mm [in]) = 5.08 [0.200]
- Mating Alignment = With
- Mating Alignment Type = Polarization
- Housing Material = Nylon
- UL Flammability Rating = UL 94V-0

#### Configuration Features:

- Number of Positions = 4
- Number of Rows = 1

#### Industry Standards:

- [RoHS/ELV Compliance](#) = RoHS compliant, ELV compliant
- [Lead Free Solder Processes](#) = Not relevant for lead free process
- RoHS/ELV Compliance History = Always was RoHS compliant
- VDE Tested = No
- Agency/Standard = CSA, UL
- UL Rating = Certified, Recognized

#### Identification Marking:

- Circuit Identification Feature = With

#### Environmental:

- Operating Temperature (°C [°F]) = -55 - +105 [-67 - +221]

#### Conditions for Usage:

- Applies To = Wire/Cable
- For Use With = Pin (Cap) Housing

#### Operation/Application:

- Application Use = Wire-to-Wire

#### Packaging Features:

- Packaging Method = Package
- Packaging Quantity = 1

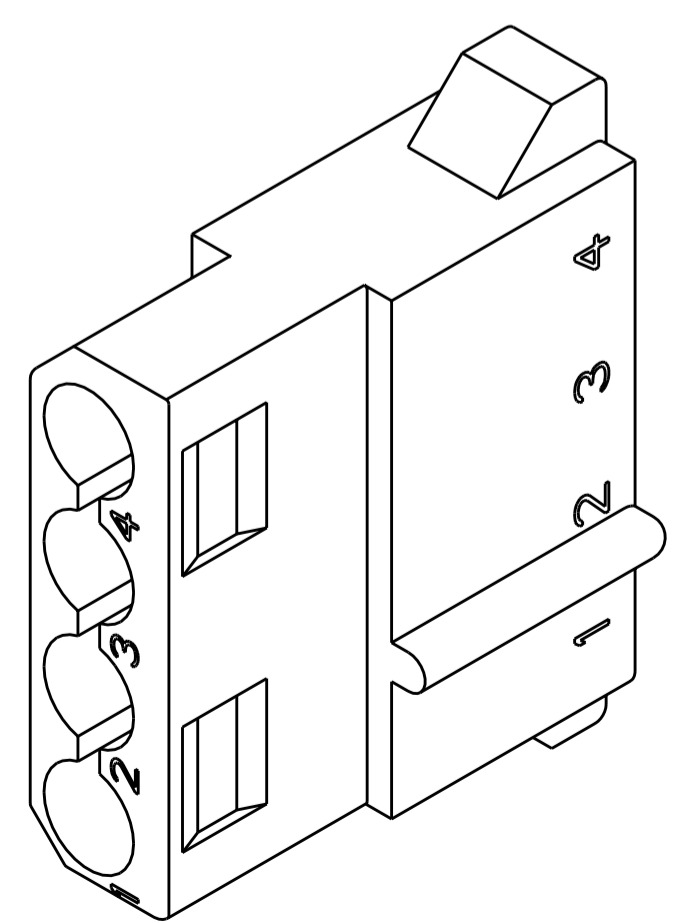
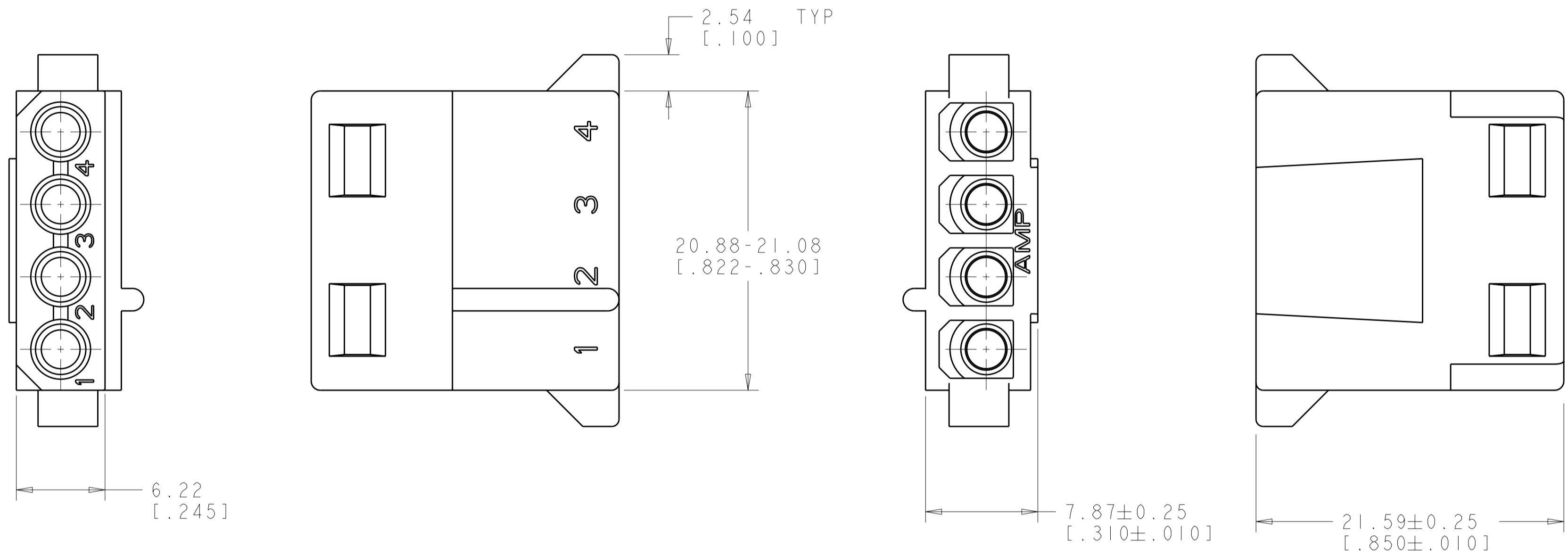
#### Other:

- Brand = AMP

THIS DRAWING IS UNPUBLISHED. RELEASED FOR PUBLICATION 20  
 © COPYRIGHT 20 BY TYCO ELECTRONICS CORPORATION. ALL RIGHTS RESERVED.

LOC	DIST	REVISIONS					
CM	00	P	LTR	DESCRIPTION	DATE	DWN	APVD
			C	ECO-08-004524	25FEB2008	KW	CC

1. THIS PLUG TO BE USED WITH CAP 480426.
2. TO BE USED WITH COMMERCIAL MATE-N-LOK™ SOCKETS.
3. DIMENSIONS IN BRACKETS ARE IN INCHES.



**METRIC**

0.118 IN <sup>3</sup>	770827-1
VOLUME	PART NUMBER

THIS DRAWING IS A CONTROLLED DOCUMENT FOR TYCO ELECTRONICS CORPORATION. IT IS SUBJECT TO CHANGE AND THE CONTROLLING ENGINEERING ORGANIZATION SHOULD BE CONTACTED FOR THE LATEST REVISION.		DWN K. WHITAKER 25FEB2008	Tyco Electronics Harrisburg, PA 17105-3608	
DIMENSIONS: mm [ INCHES ]		CHK C. CASH 25FEB2008	NAME PLUG, 4 CIRCUIT, MATE-N-LOK (™)	
TOLERANCES UNLESS OTHERWISE SPECIFIED: 0 PLC ±- 1 PLC ±- 2 PLC ±0.13 [.005] 3 PLC ±- 4 PLC ±- ANGLES ±0°30' FINISH		APVD C. CASH 25FEB2008	SIZE A200779C-770827	
MATERIAL NYLON, WHITE		PRODUCT SPEC - APPLICATION SPEC - WEIGHT -	RESTRICTED TO -	
CUSTOMER DRAWING		SCALE 4:1 SHEET 1 OF 1 REV C		