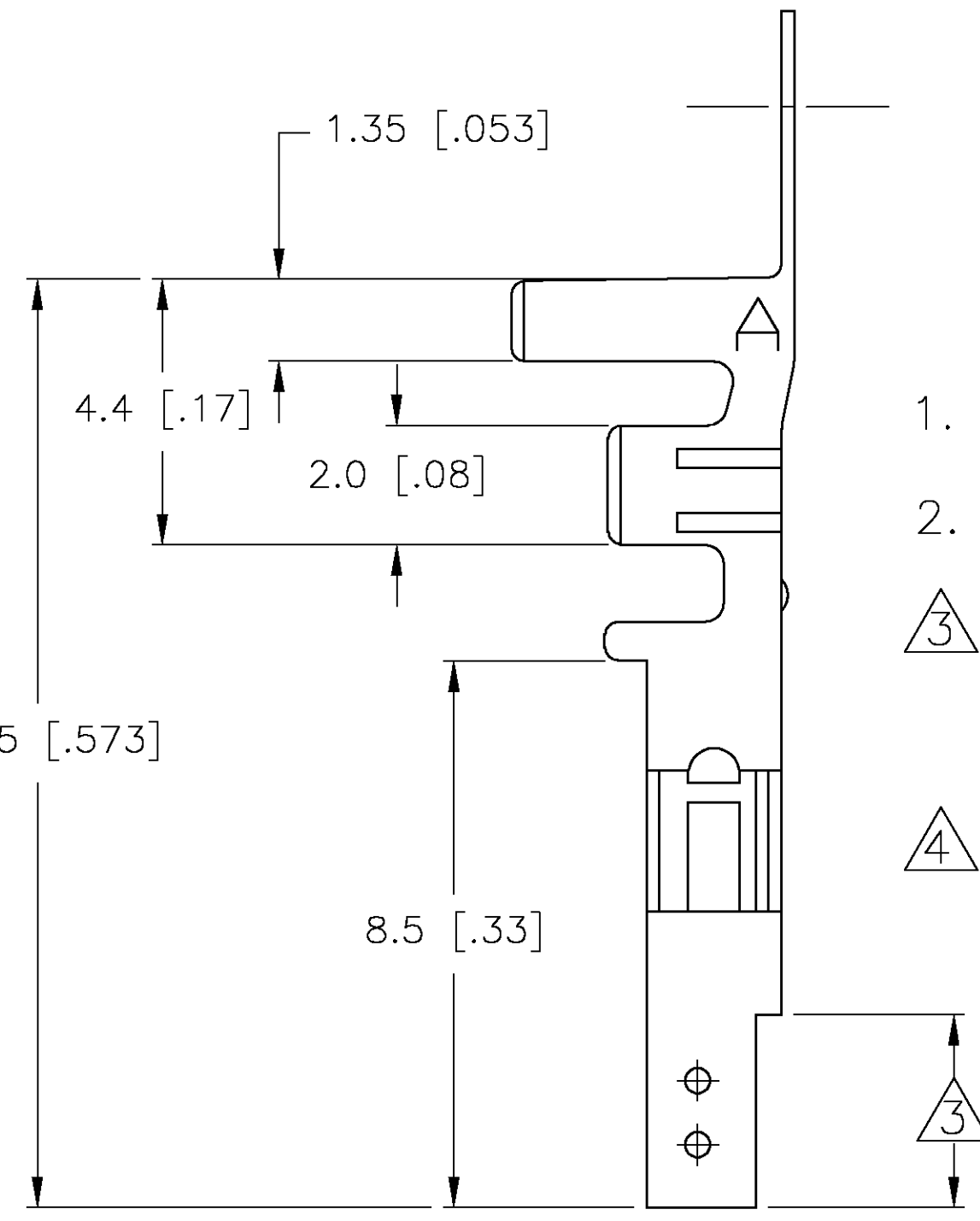
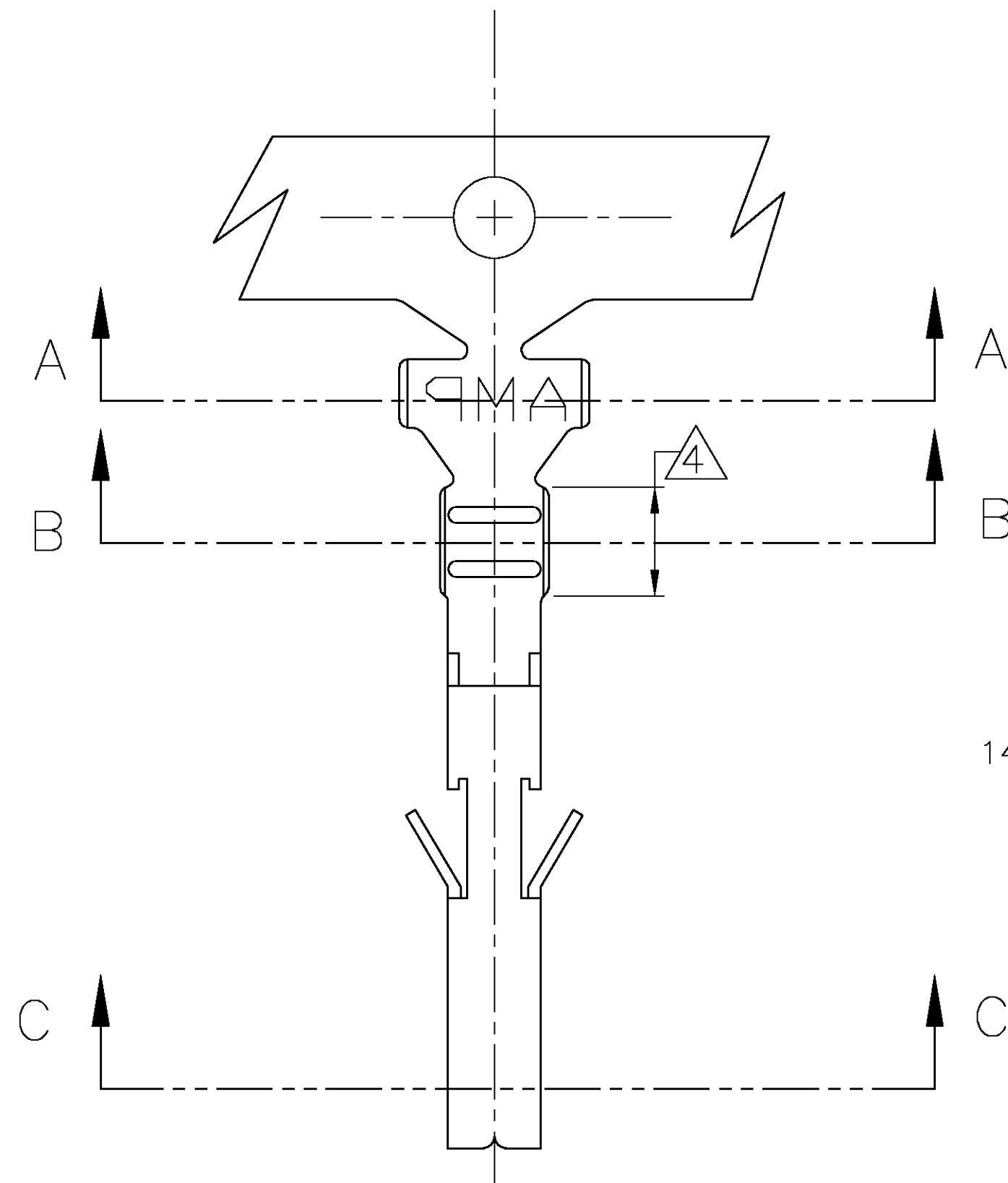
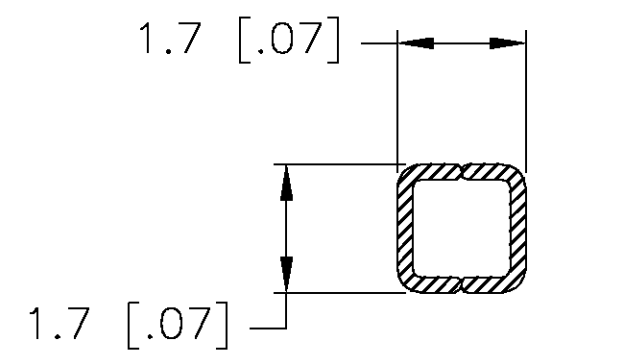
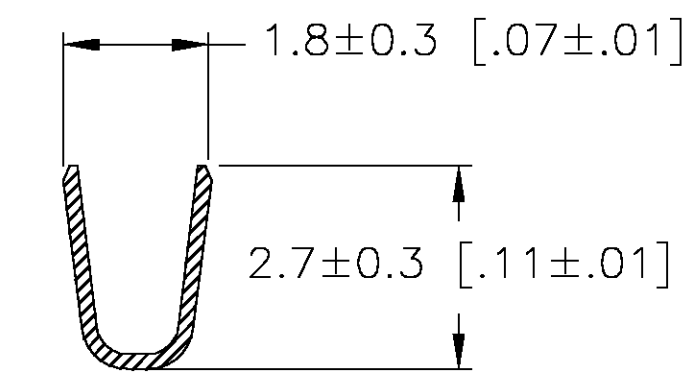
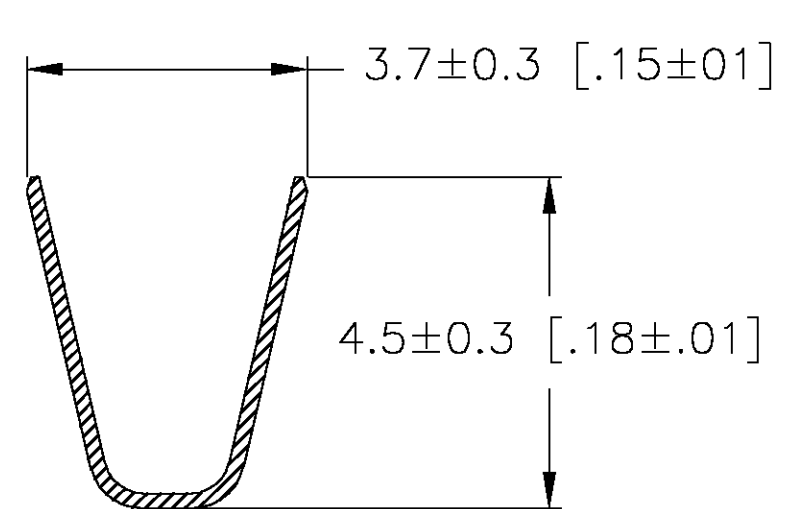


THIS DRAWING IS UNPUBLISHED. RELEASED FOR PUBLICATION
 © COPYRIGHT BY TYCO ELECTRONICS CORPORATION. ALL RIGHTS RESERVED.

LOC	DIST	REVISIONS					
CM	00	P	LTR	DESCRIPTION	DATE	DWN	APVD
		C		REVISED PER 0G3B-0291-03	07-FEB-03	SH	DC



1. WIRE RANGE: 0.32–0.82mm² (22–18 AWG).
 2. INSULATION RANGE: 1.5–2.4 DIA.
- △3 FINISH: 0.76μm MIN GOLD OVER 1.27μm MIN NICKEL REQUIRED ON INNER SURFACE, PERMITTED ON OUTER SURFACE.
- △4 FINISH: 2.54μm MIN TIN-LEAD ON ALL SURFACES IN THIS AREA.



SECTION B-B

SECTION C-C

SECTION A-A

GOLD △3△4	PHOS. BRZ.	794956-4
PRE-TIN	PHOS. BRZ.	794956-3
GOLD △3△4	BRASS	794956-2
PRE-TIN	BRASS	794956-1
FINISH:	MATERIAL:	PART NO.

THIS DRAWING IS A CONTROLLED DOCUMENT.		DWN S. HAMM 10-SEP-2001	Tyco Electronics Corporation Harrisburg, PA 17105-3608	
DIMENSIONS: MM [INCHES]		CHK D. COLEY 10-SEP-2001		
TOLERANCES UNLESS OTHERWISE SPECIFIED:		APVD D. COLEY 10-SEP-2001	NAME TERMINAL 4.2 MM [.17 IN] PITCH SOCKET	
0 PLC ± 1 PLC ± 0.25 [.010] 2 PLC ± 0.15 [.004] 3 PLC ± 0.050 [.0020] 4 PLC ± ANGLES ± FINISH		PRODUCT SPEC	RESTRICTED TO	
MATERIAL		APPLICATION SPEC	SIZE A2	CAGE CODE 00779
		WEIGHT	DRAWING NO C=794956	REV C
		CUSTOMER DRAWING	SCALE 1:1	SHEET 1 OF 1

794956