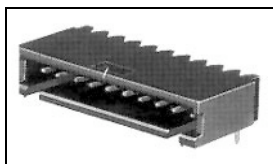


## 8-102203-4 Product Details

[Share](#) [Print](#) [Email](#)



**8-102203-4**

TE Internal Number: 8-102203-4

Active

[View 3D PDF](#)

### .100 inch AMPMODU Headers

Always EU RoHS/ELV Compliant (Statement of Compliance)

#### Product Highlights:

- Connector
- Header Type = Shrouded
- 3 Positions
- Mating Post Length = 6.10 mm
- Row-to-Row Spacing = 2.54 mm

[View all Features](#)

#### Quick Links

- ▶ [Pricing & Availability](#)
- ▶ [Search for Tooling](#)
- ▶ [View Mating Products \(1\)](#)
- ▶ [Product Feature Selector](#)
- ▶ [Contact Us About This Product](#)

[Add to My Part List](#) [Request Sample](#) [Find Similar Products](#) [Buy Product](#)

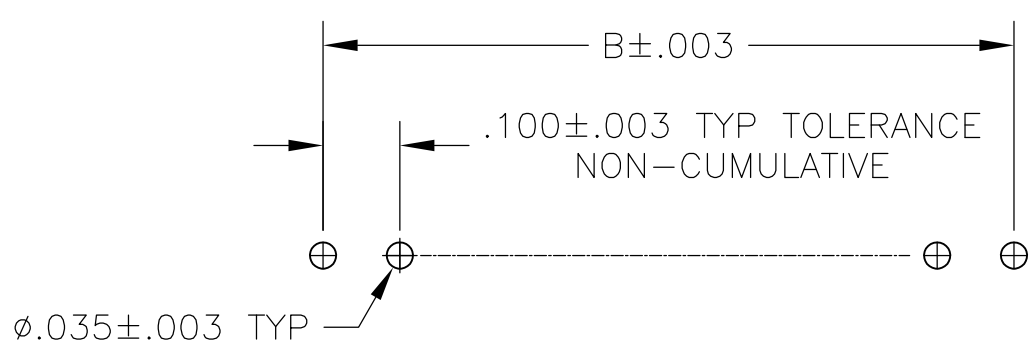
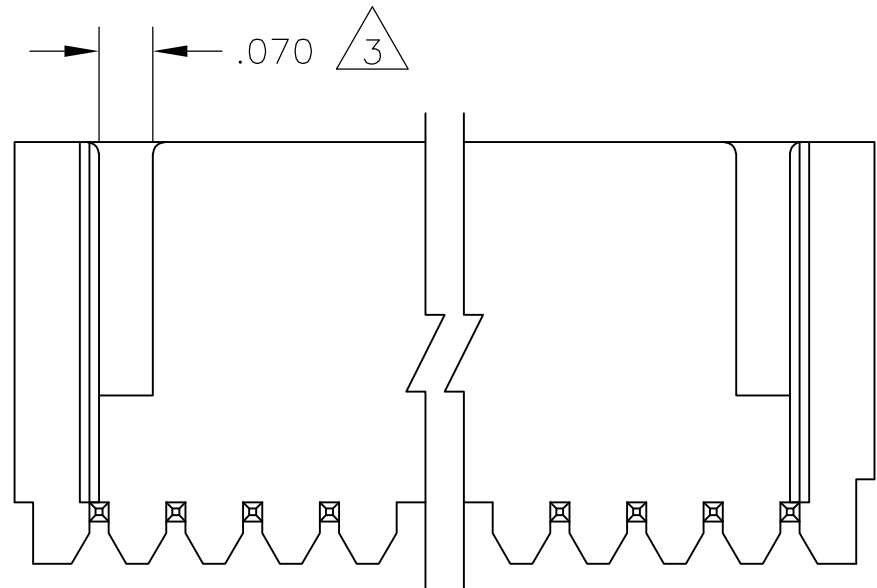
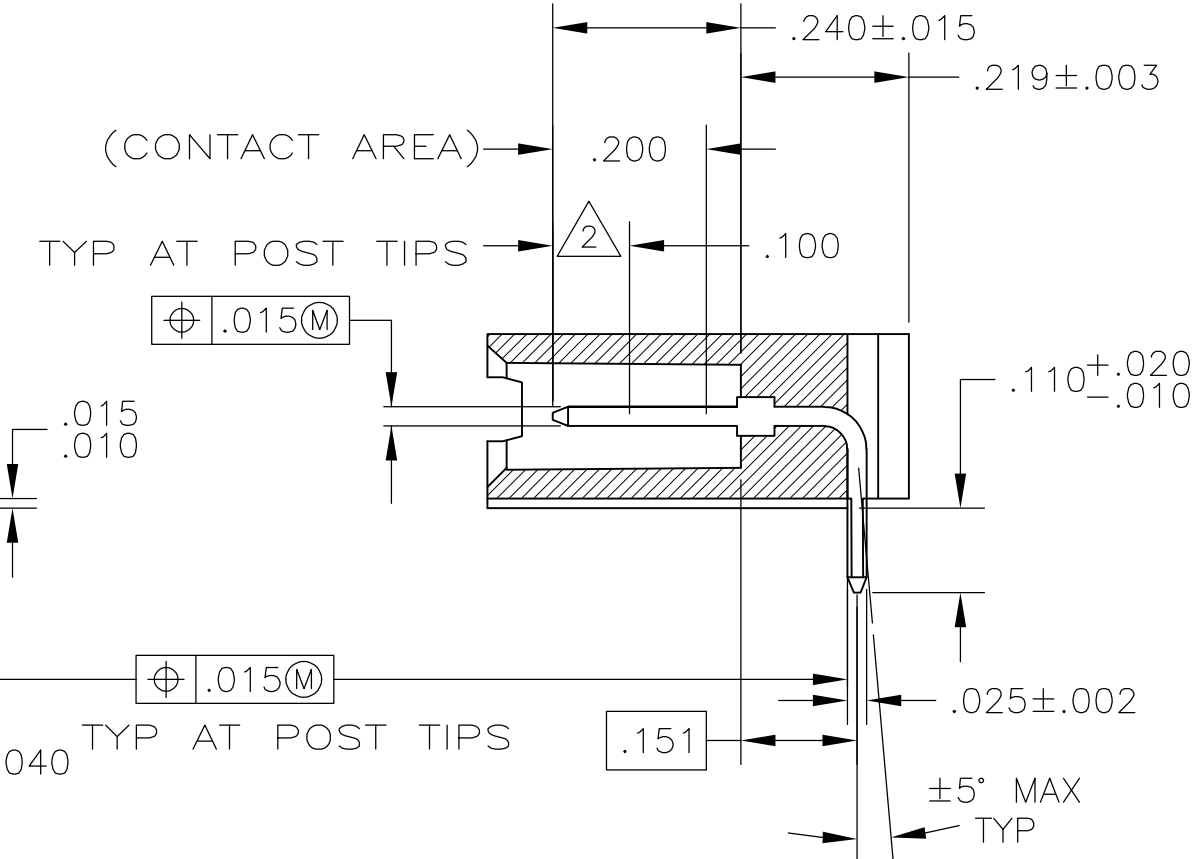
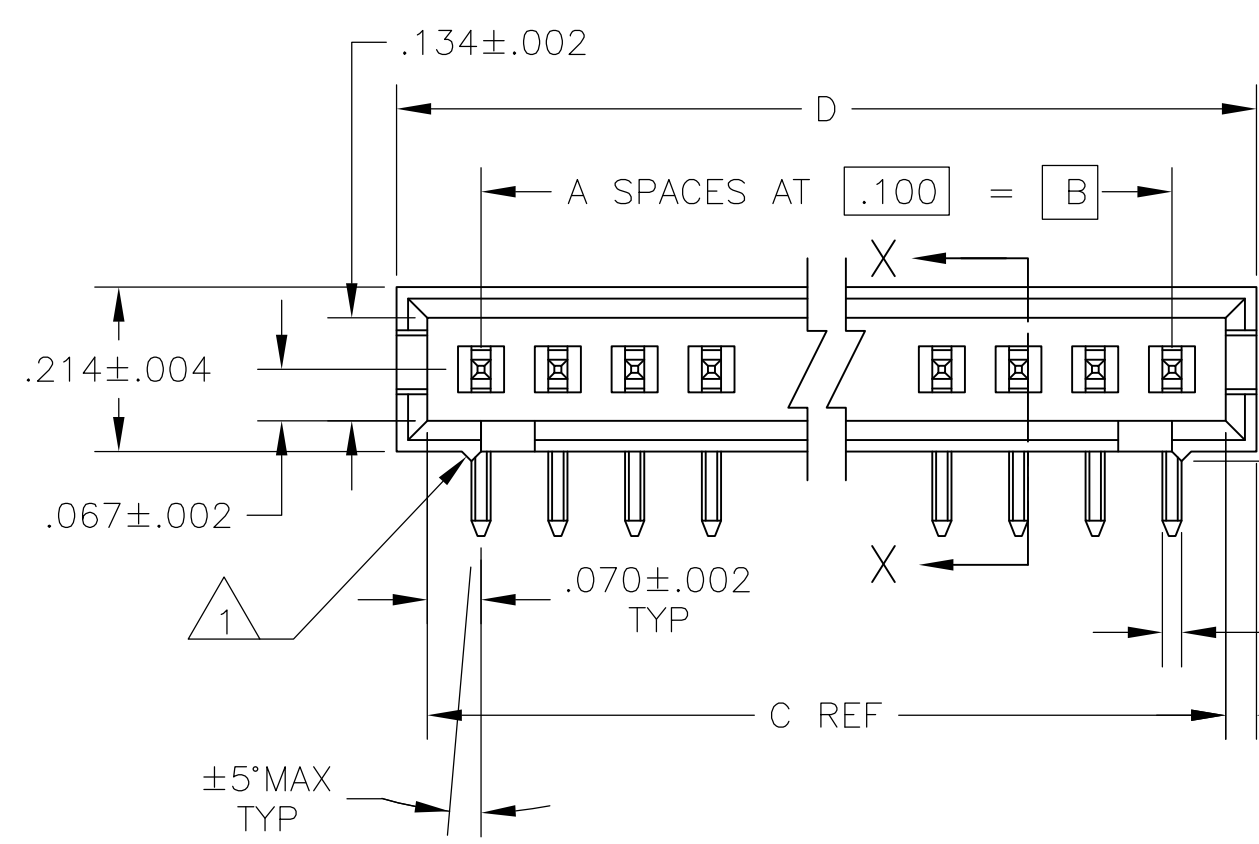
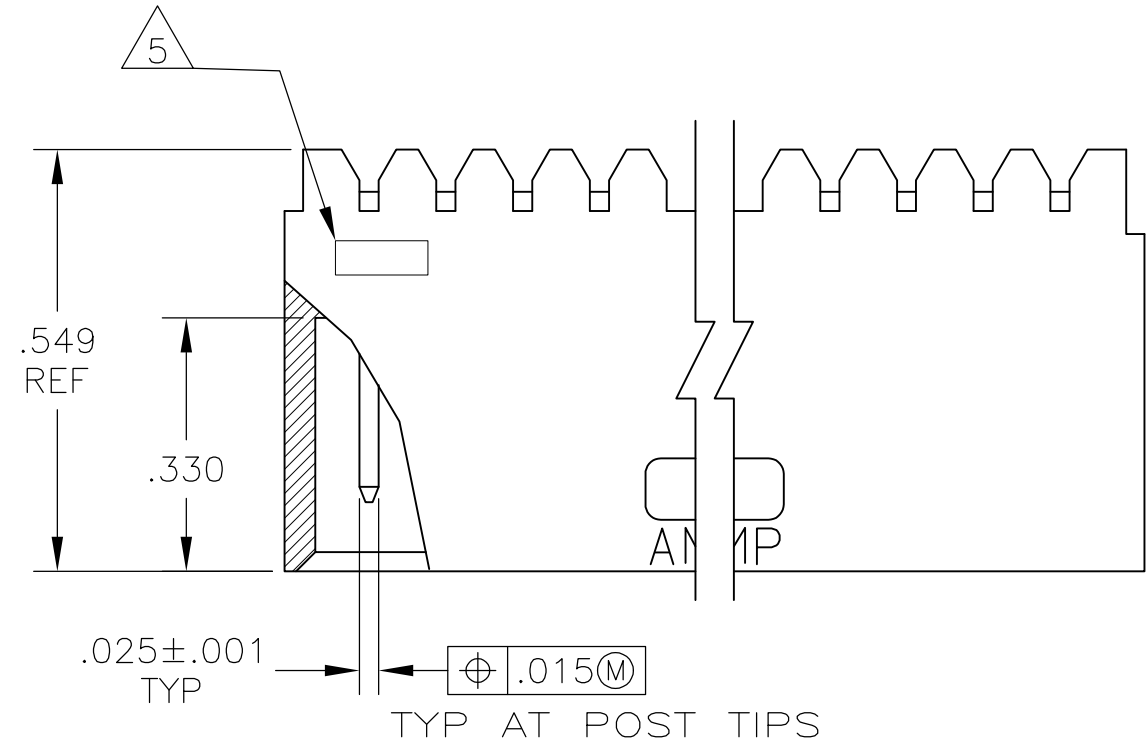
Documentation & Additional Information	
<p><b>Product Drawings:</b></p> <ul style="list-style-type: none"> <li>• <a href="#">ASSEMBLY, MOD II,HEADER,SINGLE ROW .100 C/L, RIGHT A...</a> (PDF, English)</li> </ul> <p><b>Catalog Pages/Data Sheets:</b></p> <ul style="list-style-type: none"> <li>• <a href="#">AMPMODU_INTERCONNECTION_SYSTEM_SECTIONS5</a> (PDF, English)</li> </ul> <p><b>Product Specifications:</b></p> <ul style="list-style-type: none"> <li>• None Available</li> </ul> <p><b>Application Specifications:</b></p> <ul style="list-style-type: none"> <li>• None Available</li> </ul> <p><b>Instruction Sheets:</b></p> <ul style="list-style-type: none"> <li>• None Available</li> </ul> <p><b>CAD Files:</b> (<a href="#">CAD Format &amp; Compression Information</a>)</p> <ul style="list-style-type: none"> <li>• <a href="#">2D Drawing</a> (DXF, Version V)</li> <li>• <a href="#">3D Model</a> (IGES, Version V)</li> <li>• <a href="#">3D Model</a> (STEP, Version V)</li> </ul>	<p><b>Additional Information:</b></p> <ul style="list-style-type: none"> <li>• <a href="#">Product Line Information</a></li> </ul> <p><b>Related Products:</b></p> <ul style="list-style-type: none"> <li>• <a href="#">Tooling</a></li> <li>• <a href="#">Mating Products (1)</a></li> </ul>

[List all Documents](#)

Product Features (Please use the Product Drawing for all design activity)	
<p><b>Product Type Features:</b></p> <ul style="list-style-type: none"> <li>• Product Type = Connector</li> <li>• Mount Angle = Right Angle</li> <li>• PCB Mount Retention = Without</li> <li>• Surface Mount Compatible = No</li> <li>• Board Standoff = With</li> <li>• Mating Connector Lock = Without</li> <li>• Post Size (mm [in]) = 0.64 [.025]</li> <li>• Profile = Standard</li> </ul> <p><b>Mechanical Attachment:</b></p> <ul style="list-style-type: none"> <li>• Mounting Ears = Without</li> <li>• Panel Mount Retention = Without</li> </ul> <p><b>Electrical Characteristics:</b></p> <ul style="list-style-type: none"> <li>• Current Rating (A) = 3</li> <li>• Insulation Resistance (MΩ) = 5,000</li> <li>• Dielectric Withstanding Voltage (V) = 750</li> </ul> <p><b>Termination Features:</b></p> <ul style="list-style-type: none"> <li>• Termination Post Length (mm [in]) = 2.79 [0.110]</li> <li>• Solder Tail Contact Plating = Tin over Nickel</li> </ul> <p><b>Dimensions:</b></p> <ul style="list-style-type: none"> <li>• Mating Post Length (mm [in]) = 6.10 [0.240]</li> </ul> <p><b>Body Features:</b></p> <ul style="list-style-type: none"> <li>• Header Type = Shrouded</li> <li>• Row-to-Row Spacing (mm [in]) = 2.54 [0.100]</li> <li>• Selectively Loaded = No</li> <li>• Mount Type = Printed Circuit Board</li> </ul>	<p><b>Contact Features:</b></p> <ul style="list-style-type: none"> <li>• Contact Plating, Mating Area, Material = Gold (15)</li> <li>• Contact Shape = Square</li> <li>• Contact Base Material = Phosphor Bronze</li> </ul> <p><b>Housing Features:</b></p> <ul style="list-style-type: none"> <li>• Housing Material = Thermoplastic - GF</li> <li>• Housing Style = 4-Sided</li> <li>• Housing Color = Black</li> <li>• UL Flammability Rating = UL 94V-0</li> </ul> <p><b>Configuration Features:</b></p> <ul style="list-style-type: none"> <li>• Number of Positions = 3</li> <li>• Number of Rows = 1</li> </ul> <p><b>Industry Standards:</b></p> <ul style="list-style-type: none"> <li>• RoHS/ELV Compliance = RoHS compliant, ELV compliant</li> <li>• Lead Free Solder Processes = Wave solder capable to 240°C</li> <li>• RoHS/ELV Compliance History = Always was RoHS compliant</li> <li>• Approved Standards = CSA LR7189, UL E28476</li> </ul> <p><b>Environmental:</b></p> <ul style="list-style-type: none"> <li>• Operating Temperature (°C) = -55 - +105</li> </ul> <p><b>Conditions for Usage:</b></p> <ul style="list-style-type: none"> <li>• High Temperature Housing = No</li> </ul> <p><b>Operation/Application:</b></p> <ul style="list-style-type: none"> <li>• High Speed Serial Data Connector = No</li> </ul> <p><b>Other:</b></p> <ul style="list-style-type: none"> <li>• Brand = TE Connectivity</li> </ul>

THIS DRAWING IS UNPUBLISHED. RELEASED FOR PUBLICATION  
 © COPYRIGHT - By - ALL RIGHTS RESERVED.

LOC		DIST		REVISIONS			
P	LTR	DESCRIPTION		DATE	DWN	APVD	
AD	00	W	REVISED PER ECO-12-008030	31JUL12	KH	MM	



- 1 STANDOFFS: UP TO 9 POS-(2 REQD) ON THE OUTSIDE ENDS OF THE HOUSING 10 TO 19 POS-(3 REQD) TWO ON THE OUTSIDE ENDS AND ONE CENTERED ON THE HOUSING. 19 POS AND LARGER-(4 REQD) TWO ON THE OUTSIDE ENDS AND TWO SPACED EVENLY WITHIN THE REMAINING LENGTH OF THE HOUSING.
- 2 POINT OF MEASUREMENT FOR PLATING THICKNESS.
- 3 FOR 3 POS (3--4 & 3--9 ONLY) ONE SLOT, .215 WIDE.
- 4 INDICATED PARTS ARE PACKAGED IN "GANG-OF-TUBES".
- 5 RECESSED DATE CODE
- 6 INDICATED PARTS ARE PACKAGED IN "SINGLE TUBES".
- 7 .000015 GOLD ON THE CONTACT AREA, .000100-.000200 MATTE TIN-LEAD ON THE SOLDERTAIL, ALL OVER .000050 NICKEL.
- 8 .000015 GOLD ON THE CONTACT AREA, .000100-.000200 MATTE TIN ON THE SOLDERTAIL, ALL OVER .000050 NICKEL.
- 9 PRELIMINARY PART
- 10 OBSOLETE PARTS: OBSOLETE CIS STREAMLINING PER D.RENAUD/D.SINISI

SECTION X-X

THIS DRAWING IS A CONTROLLED DOCUMENT.		DWN	11JUN85	<b>TE</b> TE Connectivity
DIMENSIONS: INCHES		CHK	11JUN85	
TOLERANCES UNLESS OTHERWISE SPECIFIED:		APVD	-	NAME
0 PLC	± -	PRODUCT SPEC	-	ASSEMBLY, MOD II, HEADER, SINGLE ROW
1 PLC	± -	APPLICATION SPEC	-	.100 C/L, RIGHT ANGLE, WITH .025 SQ POST
2 PLC	± -	SIZE	A2	CAGE CODE
3 PLC	± .005	DRAWING NO	00779	DRAWING NO
4 PLC	± -	RESTRICTED TO	-	-
ANGLES	± -	WEIGHT	-	SCALE
MATERIAL: RETARDANT THERMOPLASTIC, COLOR-BLACK, POSTS-PHOS BRONZE	FINISH: SEE TABLE	CUSTOMER DRAWING	4:1	SHEET
		SCALE	4:1	1 of 2
		REV	W	

THIS DRAWING IS UNPUBLISHED. RELEASED FOR PUBLICATION  
 © COPYRIGHT - By - ALL RIGHTS RESERVED.

LOC		DIST		REVISIONS				
P	LTR	DESCRIPTION			DATE	DWN	APVD	
-	-	SEE SHEET 1			-	-	-	

PLATING	D	C	B	A	NO OF POS	ASSEMBLY PART NUMBER
8	.820	.740	.600	6	7	8-102203-6 OBSOLETE
8	.420	.340	.200	2	3	8-102203-4
8	2.620	2.540	2.400	24	25	7-102203-2 OBSOLETE
8	2.520	2.440	2.300	23	24	7-102203-1 OBSOLETE
8	2.420	2.340	2.200	22	23	7-102203-0 OBSOLETE
8	2.320	2.240	2.100	21	22	6-102203-9
8	2.220	2.140	2.000	20	21	6-102203-8 OBSOLETE
8	2.120	2.040	1.900	19	20	6-102203-7
8	2.020	1.940	1.800	18	19	6-102203-6 OBSOLETE
8	1.920	1.840	1.700	17	18	6-102203-5
8	1.820	1.740	1.600	16	17	6-102203-4 OBSOLETE
8	1.720	1.640	1.500	15	16	6-102203-3
8	1.620	1.540	1.400	14	15	6-102203-2
8	1.520	1.440	1.300	13	14	6-102203-1
8	1.420	1.340	1.200	12	13	6-102203-0
8	1.320	1.240	1.100	11	12	5-102203-9
8	1.220	1.140	1.000	10	11	5-102203-8
8	1.120	1.040	.900	9	10	5-102203-7
8	1.020	.940	.800	8	9	5-102203-6 OBSOLETE
8	.920	.840	.700	7	8	5-102203-5
8	.820	.740	.600	6	7	5-102203-4
8	.720	.640	.500	5	6	5-102203-3
8	.620	.540	.400	4	5	5-102203-2
8	.520	.440	.300	3	4	5-102203-1

9	8	1.720	1.640	1.500	15	16	4-102203-0
9	8	.420	.340	.200	2	3	3-102203-9
9	8	1.020	.940	.800	8	9	3-102203-8
6	10	.520	.440	.300	3	4	3-102203-7
6	10	.820	.740	.600	6	7	3-102203-6
7	7	1.120	1.040	.900	9	10	3-102203-5
7	7	.420	.340	.200	2	3	3-102203-4
7	7	3.720	3.640	3.500	35	36	3-102203-3
7	7	3.620	3.540	3.400	34	35	3-102203-2
7	7	3.520	3.440	3.300	33	34	3-102203-1
7	7	3.420	3.340	3.200	32	33	3-102203-0
7	7	3.320	3.240	3.100	31	32	2-102203-9
7	7	3.220	3.140	3.000	30	31	2-102203-8
7	7	3.120	3.040	2.900	29	30	2-102203-7
7	7	3.020	2.940	2.800	28	29	2-102203-6
7	7	2.920	2.840	2.700	27	28	2-102203-5
7	7	2.820	2.740	2.600	26	27	2-102203-4
7	7	2.720	2.640	2.500	25	26	2-102203-3
10	7	2.620	2.540	2.400	24	25	2-102203-2
7	7	2.520	2.440	2.300	23	24	2-102203-1
10	7	2.420	2.340	2.200	22	23	2-102203-0
7	7	2.320	2.240	2.100	21	22	1-102203-9
10	7	2.220	2.140	2.000	20	21	1-102203-8
7	7	2.120	2.040	1.900	19	20	1-102203-7
10	7	2.020	1.940	1.800	18	19	1-102203-6
7	7	1.920	1.840	1.700	17	18	1-102203-5
10	7	1.820	1.740	1.600	16	17	1-102203-4
7	7	1.720	1.640	1.500	15	16	1-102203-3
7	7	1.620	1.540	1.400	14	15	1-102203-2
7	7	1.520	1.440	1.300	13	14	1-102203-1
7	7	1.420	1.340	1.200	12	13	1-102203-0
7	7	1.320	1.240	1.100	11	12	102203-9
7	7	1.220	1.140	1.000	10	11	102203-8
7	7	1.120	1.040	.900	9	10	102203-7
7	7	1.020	.940	.800	8	9	102203-6
7	7	.920	.840	.700	7	8	102203-5
7	7	.820	.740	.600	6	7	102203-4
7	7	.720	.640	.500	5	6	102203-3
7	7	.620	.540	.400	4	5	102203-2
7	7	.520	.440	.300	3	4	102203-1
FINISH	D	C	B	A	NO OF POS	ASSEMBLY PART NUMBER	

THIS DRAWING IS A CONTROLLED DOCUMENT.

DWN: D.RINGLY 11JUN85  
 CHK: D.DUPLER 11JUN85

APVD: -

PRODUCT SPEC: -

APPLICATION SPEC: -

WEIGHT: -

CUSTOMER DRAWING

TE Connectivity

ASSEMBLY, MOD II, HEADER, SINGLE ROW  
 .100 C/L, RIGHT ANGLE, WITH .025 SQ POST

SIZE: A2 CAGE CODE: 00779 DRAWING NO: 102203 RESTRICTED TO: -

SCALE: 1:1 SHEET: 2 OF 2 REV: W