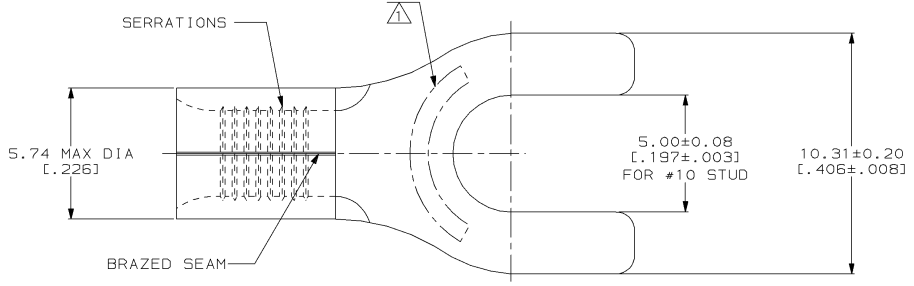


4 3 2 1
 DRAWING MADE IN THIRD ANGLE PROJECTION
 THIS DRAWING IS UNPUBLISHED. RELEASED FOR PUBLICATION
 © COPYRIGHT 19 BY AMP INCORPORATED. ALL INTERNATIONAL RIGHTS RESERVED.

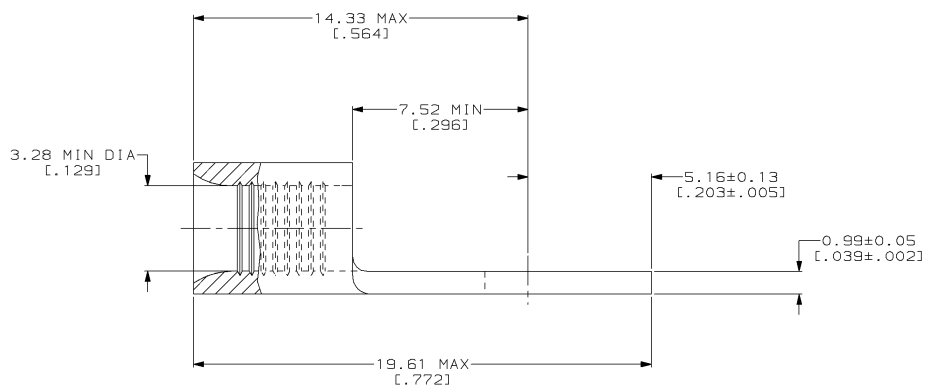
| LOC | DIST | P | F | ZONE | LTR | REVISIONS | DATE | APPD |
|-----|------|---|---|------|-----|--------------------------------------|---------|------|
| G | 14 | | | | B | REV, RDRW, & SM PKG PER 0720-0040-93 | 3-26-93 | JAP |

METRIC
 DIMENSIONS LISTED IN mm [INCHES]



| | |
|--------------------------------|----------------------------|
| AMP WIRE RANGE | UL E13288 Listed |
| 12-10 AWG SOLID OR STRANDED | 12-10 AWG STRANDED |
| CS LR7189 Certified | MILITARY P/N AND CLASS |
| 12-10 AWG SOLID OR STRANDED | NOT APPLICABLE |

△ STAMP AMP 12-10* APPROX AS SHOWN



| | | |
|----------|------------------|-----------|
| 50 | LOOSE PIECE, BOX | 8-33479-2 |
| 2500 | ON TAPE | 2-33479-1 |
| --- | LOOSE PIECE | 33479 |
| QUANTITY | PACKAGING TYPE | PART NO |

AMP INCORPORATED
CUSTOMER SERVICE SYSTEMS

MAX RECOMMENDED OPERATING TEMPERATURE:
 170°C MAX

DO NOT SCALE PRINT.
 UNLESS SPECIFIED DIMENSIONS IN ~~mm~~ (INCHES)
 TOLERANCES ON:
 2 PLC DEC ± -
 3 PLC DEC ± -
 ANGLES ± -

DR 3-26-93 TA BRINKMAN
 CHK 3-26-93 DA PATTERSON
 APPD 3-26-93 DE MILLER

AMP AMP Incorporated
 Harrisburg, PA 17105-3608

FOR ADDITIONAL PRODUCT INFORMATION OR COPIES OF DRAWINGS AND TECHNICAL DOCUMENTS

PRODUCT INFORMATION CENTER
 1-800-522-6752

VOLTAGE RATING:
 NOT APPLICABLE

MATERIAL
 COPPER PER ASTM B-152 ANNEALED

APPD 3-26-93 JL MECKLEY
 PRODUCT SPEC -

NAME
TERMINAL, SPADE TONGUE, SOLISTRAND™

FOR APPLICATION TOOLING INFORMATION

TOOLING ASSISTANCE CENTER
 1-800-722-1111

WIRE CROSS SECTIONAL AREA RANGE:
 2.62-6.64mm² [5, 180-13, 100] CIR MILS
 SOLID OR STRANDED

FINISH
 T1N PLATE
 0.00254 [0.00100] MIN THK PER MIL-T-10727

APPLICATION SPEC -
 WEIGHT -

SIZE CAGE CODE DRAWING NO
 00779 C=33479
 SCALE 8:1 SHEET 1 OF 1

FOR ORDER ENTRY

1-800-526-5142

THIS DRAWING IS A CONTROLLED DOCUMENT FOR AMP INCORPORATED. IT IS SUBJECT TO CHANGE AND THE CONTROLLING ENGINEERING ORGANIZATION SHOULD BE CONTACTED FOR THE LATEST REVISION.

AMP 1471-6 REV 3-92
 10_SEP_1993 12:47:20 AMP26463 <U5128A>DEPT1123>DWG1123>U_SQ1STRAND>U_INL_INE

CUSTOMER DRAWING