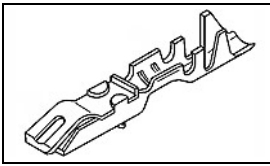


87124-1 Product Details

[Share](#) [Print](#) [Email](#)



87124-1

TE Internal Number: 87124-1

Active

[View 3D PDF](#)

Contacts-AMPMODU Machine Applied

Always EU RoHS/ELV Compliant (Statement of Compliance)

Product Highlights:

- Contact Configuration = Locking Clip
- Post Size = 0.64 [.025] mm [in]
- Wire Range = 0.12-0.40² [26-22] mm [AWG]
- Wire Insulation Diameter = .97 - 1.57 mm
- Phosphor Bronze Contact Base Material

[View all Features](#)

Quick Links

- ▶ [Pricing & Availability](#)
- ▶ [Search for Tooling](#)
- ▶ [Product Feature Selector](#)
- ▶ [Contact Us About This Product](#)

[Add to My Part List](#) [Request Sample](#) [Find Similar Products](#) [Buy Product](#)

Documentation & Additional Information

Product Drawings:

- [CONTACT - LOCKING CLIP FOR 0.64\[.025\] SQUARE POST \(PDF, English\)](#)

Catalog Pages/Data Sheets:

- [AMPMODU_INTERCONNECTION_SYSTEM_SECTION5_CONT \(PDF, English\)](#)

Product Specifications:

- [Sealed Door Mirror Connector 2 Pos. Locking Clip Contact \(PDF, English\)](#)
- [Sealed Door Mirror Connector 2 Pos. Locking Clip Contact \(PDF, Japanese\)](#)

Application Specifications:

- [Locking Clip 0.64-mm \(.025-in.\) Square Contacts and ... \(PDF, English\)](#)

Instruction Sheets:

- [AMPMODU Locking Clip Contacts and Housings for 0.64m... \(PDF, English\)](#)

CAD Files: (CAD Format & Compression Information)

- [2D Drawing \(DXF, Version S\)](#)
- [3D Model \(IGES, Version S\)](#)
- [3D Model \(STEP, Version S\)](#)

[List all Documents](#)

Additional Information:

- [Product Line Information](#)

Related Products:

- [Tooling](#)

Product Features (Please use the Product Drawing for all design activity)

Product Type Features:

- **Post Size (mm [in])** = 0.64 [.025]
- **Wire Insulation Diameter (mm [in])** = 0.97 - 1.57 [0.038 - 0.062]
- **With Insulation Support** = Yes

Electrical Characteristics:

- **Voltage Rating (VAC)** = 250
- **Contact - Rated Current (A)** = 3
- **Termination Resistance (mΩ)** = 12
- **Insulation Resistance (MΩ)** = 5,000
- **Dielectric Withstanding Voltage (V)** = 750

Termination Features:

- **Termination Method to Wire/Cable** = Crimp

Body Features:

- **Wire Range (mm [AWG])** = 0.12-0.40² [26-22]

Contact Features:

- **Contact Configuration** = Locking Clip
- **Contact Base Material** = Phosphor Bronze
- **Contact Plating, Mating Area, Material** = Gold (30)
- **Contact Shape** = Square
- **Solder Tail Contact Plating** = Gold Flash over Nickel (50)
- **Contact Spring Material** = Stainless Steel

Industry Standards:

- **RoHS/ELV Compliance** = RoHS compliant, ELV compliant
- **Lead Free Solder Processes** = Wave solder capable to 260°C, Wave solder capable to 240°C, Wave solder capable to 265°C
- **RoHS/ELV Compliance History** = Always was RoHS compliant
- **Approved Standards** = CSA LR7189, UL E28476

Environmental:

- **Operating Temperature (°C)** = -65 - +105

Packaging Features:

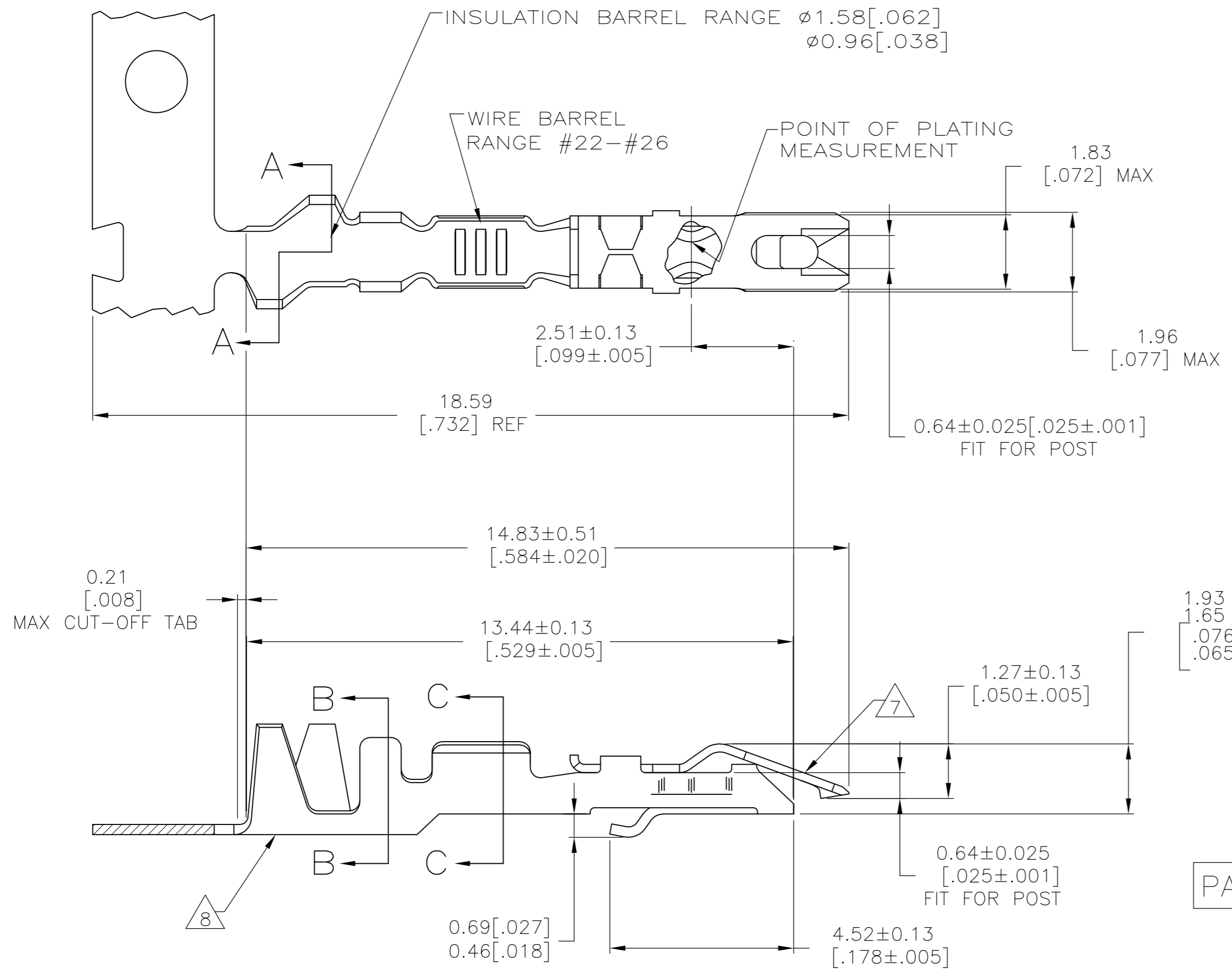
- **Packaging Method** = Strip

Other:

- **Brand** = AMP
- **Comment** = Extraction Tool No. 91084-1 is used for removing individual contacts from connector housings and for detaching contacts from mating posts.; These contacts must be crimped in accordance with AMP Specification No. 114-25006 in order to function properly in a connector housing.; (*) For use with Model "K" machines. Call the Technical Assistance Center (1-800-522-6752) for part numbers of applicators for use with Model "G" machines, as well as other bench machines and fully automatic AMPOMATOR lead making machines.

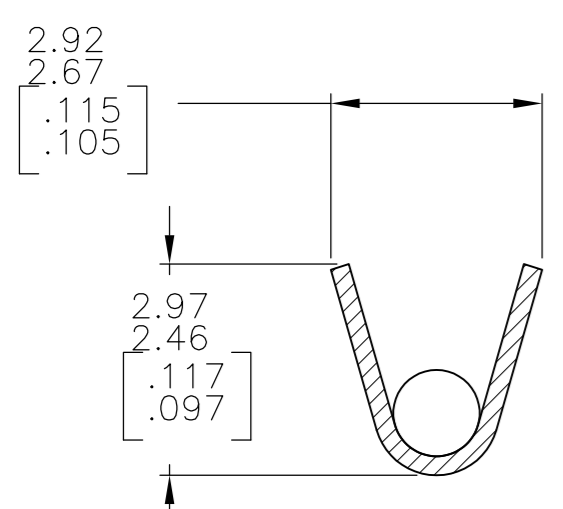
THIS DRAWING IS UNPUBLISHED. RELEASED FOR PUBLICATION
 © COPYRIGHT - By - ALL RIGHTS RESERVED.

| LOC | DIST | REVISIONS | | | |
|-----|------|------------------------------|---------|-----|------|
| P | LTR | DESCRIPTION | DATE | DWN | APVD |
| AD | 00 | S1 REVISED PER ECO-11-004820 | 11MAR11 | RK | HMR |

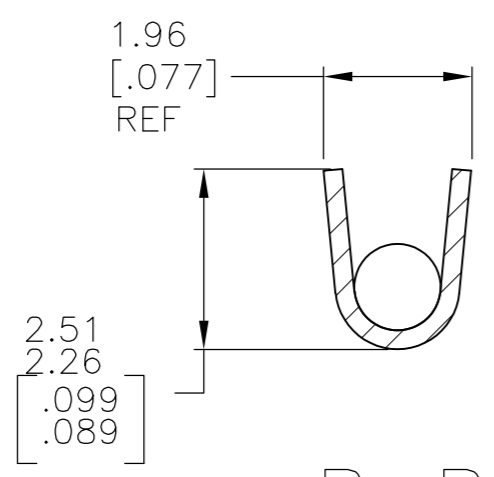


- 1 REELED FOR MINI-APPLICATOR.
- 2 REELED FOR STRIPPER CRIMPER.
- 3 PLATED WITH 0.00076[.000030] GOLD IN CONTACT AREA, GOLD FLASH ON REMAINDER, OVER 0.00127[.000050] NICKEL.
- 4 PLATED WITH 0.00127[.000050] GOLD IN CONTACT AREA, GOLD FLASH ON REMAINDER, OVER 0.00127[.000050] NICKEL.
- 5 PLATED WITH 0.00254[.000100] TIN-LEAD OVER 0.00127[.000050] NICKEL - ENTIRE CONTACT.
- 6 PLATED WITH 0.00127[.000050] GOLD OVER 0.00127[.000050] NICKEL - ENTIRE CONTACT.
- 7 SPRING MATERIAL: STAINLESS STEEL.
- 8 BODY MATERIAL: PHOS BRONZE - FINISH: SEE TABLE.
- 9 PLATED WITH .000100 TIN OVER .000050 NICKEL OVER ENTIRE CONTACT.

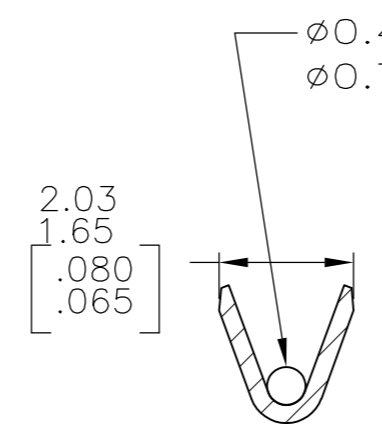
PART NUMBER 1-87124-2 SUPERCEDED BY 5-87124-2



A-A
(ROTATED 90° CLOCKWISE)



B-B



C-C

Ø0.46[.018] MUST BOTTOM IN WIRE BARREL
 Ø0.79[.031] MUST NOT BOTTOM IN WIRE BARREL.

OBsolete
 OBsolete

| REMARKS | BODY FINISH | PART NO (LOOSE PIECE) | PART NUMBER (STRIP) |
|---------|-------------|-----------------------|---------------------|
| 1 | 9 | 5-87165-2 | 5-87124-2 |
| 1 | 9 | - | 1-87124-2 |
| 2 | 3 | 87165-1 | 1-87124-1 |
| - | 6 | 87165-4 | 87124-4 |
| 1 | 4 | 87165-3 | 87124-3 |
| 1 | 5 | 87165-2 | 87124-2 |
| 1 | 3 | 87165-1 | 87124-1 |

| | | | | |
|--|------------------|--------------------------|---|-----------------|
| THIS DRAWING IS A CONTROLLED DOCUMENT. | | DWN E. BRANDBERG 23SEP94 | | |
| DIMENSIONS: mm [INCHES] | | CHK S. SHUEY 23SEP94 | | |
| TOLERANCES UNLESS OTHERWISE SPECIFIED: | | APVD D. DUPLER 23SEP94 | NAME | |
| 0 PLC ± - | 1 PLC ± - | PRODUCT SPEC | CONTACT - LOCKING CLIP FOR 0.64[.025] SQUARE POST | |
| 2 PLC ± - | 3 PLC ± - | APPLICATION SPEC | SIZE A2 | CAGE CODE 00779 |
| 4 PLC ± - | ANGLES ± - | WEIGHT - | DRAWING NO C=87124 | RESTRICTED TO - |
| MATERIAL SEE CALLOUT | FINISH SEE TABLE | CUSTOMER DRAWING | SCALE 10:1 | SHEET 1 OF 1 |