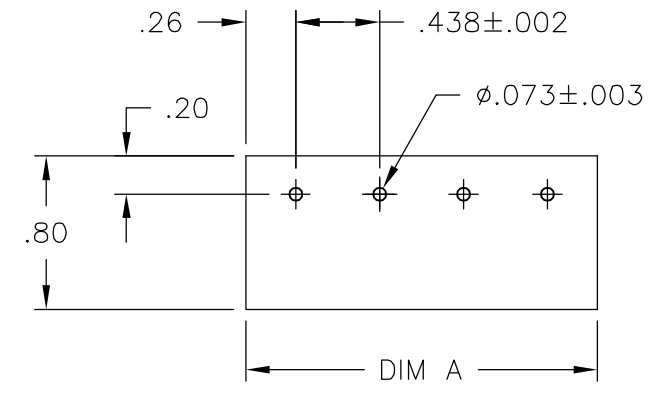
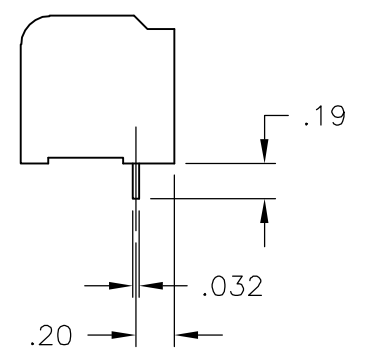
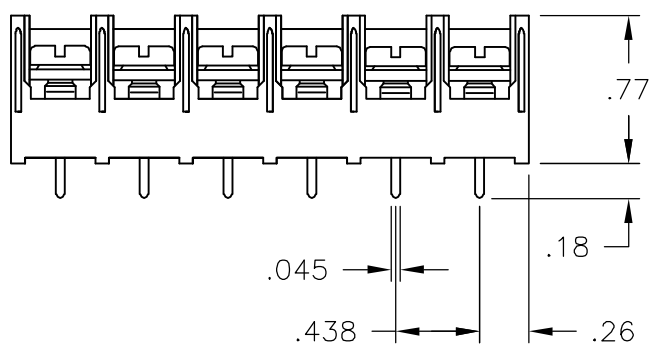
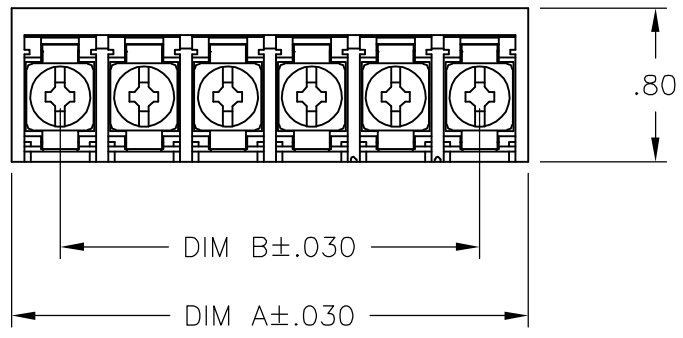


THIS DRAWING IS UNPUBLISHED. RELEASED FOR PUBLICATION
 © COPYRIGHT BY TYCO ELECTRONICS CORPORATION. ALL RIGHTS RESERVED.

LOC	DIST	REVISIONS					
FT	0	P	LTR	DESCRIPTION	DATE	DWN	APVD
			F	REVISED PER ECO-06-434	1/9/06	SS	SRY



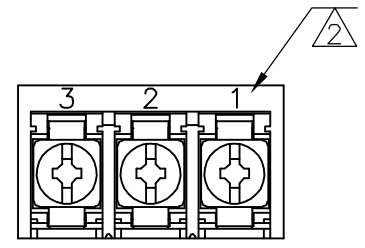
RECOMMENDED PCB LAYOUT

MATERIALS:
 HOUSING: NYLON, UL94V-0, BLACK.
 TERMINAL: BRIGHT TIN PLATED COPPER ALLOY.
 SCREWS: 8-32 ZINC PLATED STEEL.

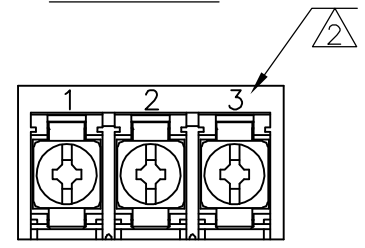
ELECTRICAL:
 CURRENT RATING: 30A
 VOLTAGE RATING: 600V
 WIRE RANGE: 10-18 AWG (UL)
 10-22 AWG (CSA)

MECHANICAL:
 RECOMMENDED TORQUE: 12 IN-LB
 OPERATING TEMP.: -40°C TO 120°C.

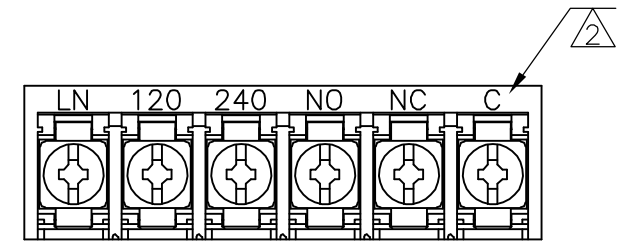
NOTES:
 1 UNITS ARE TO BE PACKAGED AS FOLLOWS:
 QTY/BOX: 360PCS
 QTY/TRAY: 90PCS
 NO. OF LAYERS: 4
 2 MARK WITH WHITE INK.



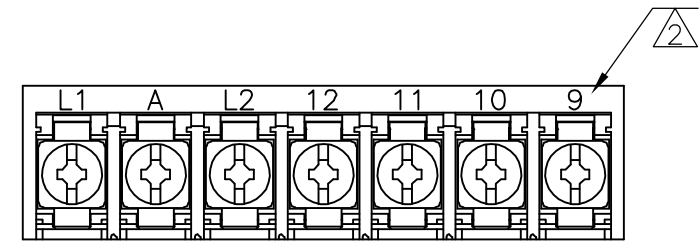
1546728-3



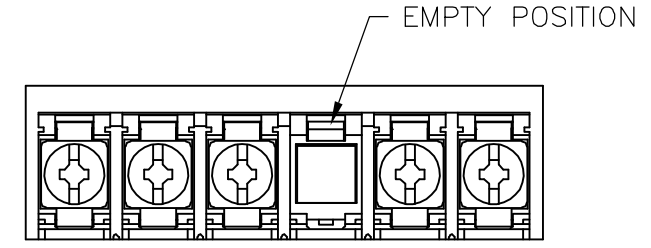
1546137-1



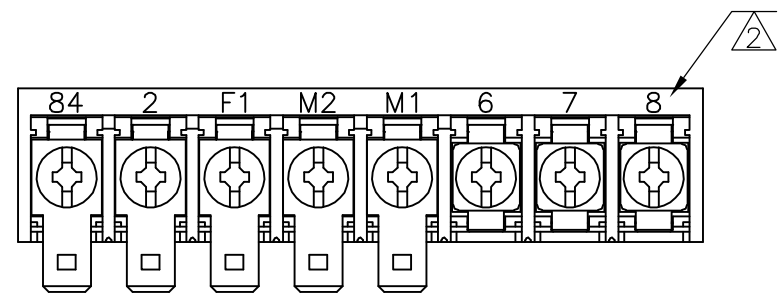
6-1546159-4



6-1546159-7



1546728-1



6-1546159-6

THIS DRAWING IS A CONTROLLED DOCUMENT.		DWN	S SCHLEGEL	5/15/03	tyco Electronics	Tyco Electronics Corporation Harrisburg, PA 17105-3608			
DIMENSIONS: INCHES		CHK	S YODER	5/15/03		NAME 8PCV-XX-006 ASSEMBLY			
TOLERANCES UNLESS OTHERWISE SPECIFIED:		APVD	S YODER	5/15/03	PRODUCT SPEC				
0 PLC ± -		APPLICATION SPEC	-						
1 PLC ± -		WEIGHT	-						
2 PLC ± .02		SIZE	A3	CAGE CODE	00779	DRAWING NO	C-6-1437657-3		RESTRICTED TO
3 PLC ± .010		CUSTOMER DRAWING							
4 PLC ± -		SCALE	NTS		SHEET	1 of 2		REV	F
ANGLES ± -									
FINISH									

THIS DRAWING IS UNPUBLISHED. RELEASED FOR PUBLICATION
 © COPYRIGHT BY TYCO ELECTRONICS CORPORATION. ALL RIGHTS RESERVED.

LOC	DIST	REVISIONS					
		P	LTR	DESCRIPTION	DATE	DWN	APVD
FT	0		-	SEE SHEET 1	-	-	-

COMMENTS	DIM. B	DIM. A	NO. OF POS.	CATALOG NUMBER	TYCO PART NO.
-	8.312	8.822	20	8PCV-20-006	8-1546159-2
-	7.875	8.385	19	8PCV-19-006	1546728-2
-	7.438	7.948	18	8PCV-18-006	7-1437658-2
-	7.000	7.510	17	8PCV-17-006	8-1546159-1
-	6.563	7.073	16	8PCV-16-006	6-1437658-6
-	6.125	6.635	15	8PCV-15-006	8-1437659-0
-	5.688	6.198	14	8PCV-14-006	6-1437658-0
-	5.250	5.760	13	8PCV-13-006	5-1437658-5
-	4.813	5.323	12	8PCV-12-006	4-1437658-5
-	4.375	4.885	11	8PCV-11-006	4-1437658-0
-	3.938	4.448	10	8PCV-10-006	3-1437658-3
-	3.500	4.010	9	8PCV-09-006	7-1546159-1
SEE FIGURE	3.063	3.573	8	8PCV-08-502	6-1546159-9
-	3.063	3.573	8	8PCV-08-006	2-1437658-1
SEE FIGURE	2.625	3.135	7	8PCV-07-598	6-1546159-7
-	2.625	3.135	7	8PCV-07-623	1-1437658-6
-	2.625	3.135	7	8PCV-07-006	1-1437658-1
SEE FIGURE	2.187	2.697	6	8PCV-06-653	1546728-1
SEE FIGURE	2.187	2.697	6	8PCV-06-538	6-1546159-4
-	2.187	2.697	6	8PCV-06-006	9-1437657-8
LAYER PKG	1.750	2.260	5	8PCV-05-637	9-1437657-4
-	1.750	2.260	5	8PCV-05-006	8-1437657-8
LAYER PKG	1.312	1.822	4	8PCV-04-636	8-1437657-3
-	1.312	1.822	4	8PCV-04-006	8-1437657-0
SEE FIGURE	.875	1.385	3	8PCV-03-662	1546728-3
SEE FIGURE	.875	1.385	3	8PCV-03-657	1546137-1
-	.875	1.385	3	8PCV-03-006	6-1437657-9
-	.437	.947	2	8PCV-02-006	5-1437657-7
SPECIAL PKG	.437	.947	2	8PCV-02-634	6-1437657-3

THIS DRAWING IS A CONTROLLED DOCUMENT.		DWN S SCHLEGEL 5/15/03	tyco Tyco Electronics Corporation	
DIMENSIONS: INCHES		CHK S YODER 5/15/03	Electronics Harrisburg, PA 17105-3608	
TOLERANCES UNLESS OTHERWISE SPECIFIED:		APVD S YODER 5/15/03	NAME 8PCV-XX-006 ASSEMBLY	
0 PLC ± -		PRODUCT SPEC	-	
1 PLC ± -		APPLICATION SPEC	-	
2 PLC ± .02		SIZE	CAGE CODE	DRAWING NO
3 PLC ± .010		A3 00779		C-6-1437657-3
4 PLC ± -		RESTRICTED TO		-
ANGLES ± -		CUSTOMER DRAWING		
MATERIAL -	FINISH -	SCALE NTS		SHEET 2 OF 2
				REV F