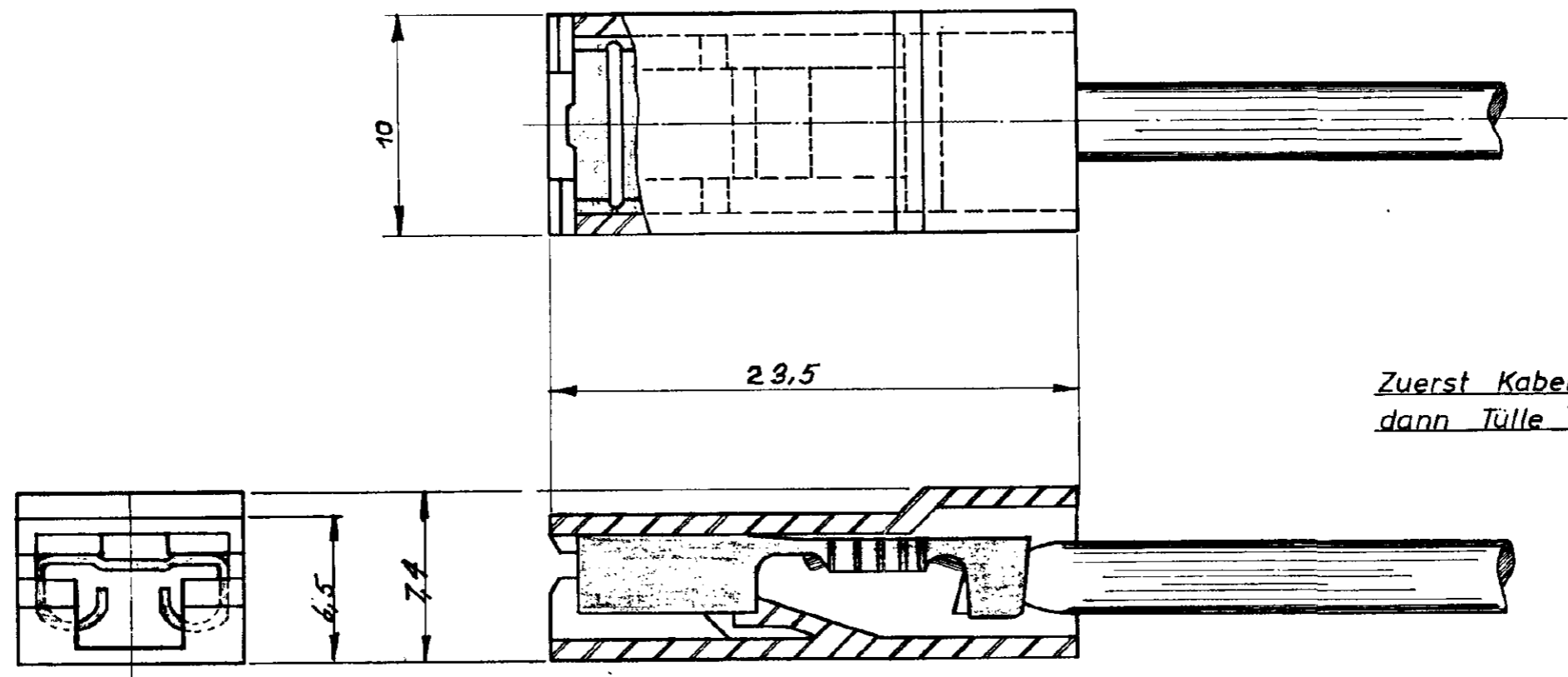


1 OBSOLETE	925-068-3	Thermopl. Polyester	natur	UL 94 V-0
	925 068-2	Polyamid 5.6	schwarz	UL 94 V-2



Zuerst Kabelschuh anschlagen,
dann Tülle aufstecken.

Zeichnung geschützt durch
Copyright 1967
AMP DEUTSCHLAND GmbH
Alle Rechte vorbehalten

1 OBSOLETE PARTS: OBSOLETE CIS STREAMLINING PER D.RENAUD/D.SINISI

American Projection

1 OBSOLETE	925-068-1	Polypropylen (PPH)	natur	UL 94 V-2
	925 068-0	Polyamid 5.6	natur	
	Nummer	Werkstoff	Farbe	

LTR	REVISION RECORD	DR	CHK	DATE
C1	REVISED PER ECO-09-026444	KK	AEG	NOV09
C	-3 Thermopl. Polyester	W		4-77
B	-1 Polypropylen added	W		10/74
A	DIMENSION	W		7-67

NUMBER	REQUIRED PER ASSEMBLY	DESCRIPTION

© 1967 BY AMP INCORPORATED. ALL RIGHTS RESERVED.
AMP PRODUCTS COVERED BY PATENTS AND/OR PATENTS PENDING.

CUSTOMER COPY REFERENCE ONLY

DR 1-6-67 Kuhlmann

CHK

DE

MATERIAL AND FINISH

WIRE - RANGE - INSULATION

TOLERANCE EXCEPT AS NOTED ± .015 ± 1° 0'

SCALE 4:1

LOC A1

NO B

NO 925058

REV C1

NAME ISOLIERTÜLLE FÜR .250 SERIE FASTON

AMP Deutsche AMP G.m.b.H. Langen b. Flm. Germany

TOLERANZ ± 0,2 mm

DIMENSIONS IN INCHES. DO NOT SCALE PRINT.

PRINT DIST