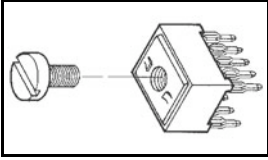


9-55556-0 Product Details

[Share](#) [Print](#) [Email](#)



9-55556-0

TE Internal Number: 9-55556-0

Active

[View 3D PDF](#)

Power Tap

Always EU RoHS/ELV Compliant
(Statement of Compliance)

Product Highlights:

- Current Rating = 25 A
- Low Profile
- Insulated
- Without FASTON Tab
- With Screw

[View all Features](#)

Quick Links

- ▶ [Pricing & Availability](#)
- ▶ [Search for Tooling](#)
- ▶ [Product Feature Selector](#)
- ▶ [Contact Us About This Product](#)

[Add to My Part List](#)

[Request Sample](#)

[Find Similar Products](#)

[Buy Product](#)

Documentation & Additional Information

Product Drawings:

- [TAP ASSEMBLY, POWER DISTRIBUTION](#) (PDF, English)

Catalog Pages/Data Sheets:

- None Available

Product Specifications:

- [Power Distribution Tap](#) (PDF, English)

Application Specifications:

- None Available

Instruction Sheets:

- None Available

CAD Files: (CAD Format & Compression Information)

- [2D Drawing](#) (DXF, Version T)
- [3D Model](#) (IGES, Version T)
- [3D Model](#) (STEP, Version T)

[List all Documents](#)

Additional Information:

- [Product Line Information](#)

Related Products:

- [Tooling](#)

Product Features (Please use the Product Drawing for all design activity)

Product Type Features:

- [Profile](#) = Low
- [Insulation](#) = Yes
- PCB Mounting Orientation = Vertical
- [Footprint \(mm \[in\]\)](#) = 7.62 x 2.54 [.300 x .100]
- Screw Size = 6-32

Electrical Characteristics:

- Current Rating (A) = 25

Dimensions:

- PCB Thickness, Recommended (mm [in]) = 1.57 – 3.18 [0.062 – 0.1251]

Body Features:

- [FASTON Tab](#) = Without
- [Screw](#) = With
- [Louvertac Band](#) = Without
- Screw Material = Steel

Contact Features:

- Contact Configuration = ACTION PIN Post, High Current
- ACTION PIN Material = Copper Alloy
- ACTION PIN Plating = Bright Tin

Housing Features:

- Housing Material = Nylon - GF

Configuration Features:

- [Number of Positions](#) = 10

Industry Standards:

- [RoHS/ELV Compliance](#) = RoHS compliant, ELV compliant
- [Lead Free Solder Processes](#) = Wave solder capable to 260°C, Wave solder capable to 240°C, Wave solder capable to 265°C
- RoHS/ELV Compliance History = Always was RoHS

compliant

- UL Flammability Rating = UL 94V-0

Other:

- Brand = AMP
- Comment = Housing and contact assembled with screw.; Screw not assembled.

Corporate Information

- [About TE](#)
- [Investors](#)
- [News Room](#)
- [Supplier Portal](#)
- [Careers](#)
- [Terms & Conditions](#)
- [Privacy Policy](#)
- [AODA Accessibility Policy](#)
- [AODA Multi-Year Accessibility Plan](#)

Quick Links

- [Distributor Inventory](#)
- [Product Cross Reference](#)
- [Documents & Drawings](#)
- [Product Compliance Support Center](#)
- [Site Map](#)

Customer Support

- [Email or Chat With Us](#)
- [Find a Phone Number](#)
- [Knowledge Base](#)
- [Manage Your Account](#)

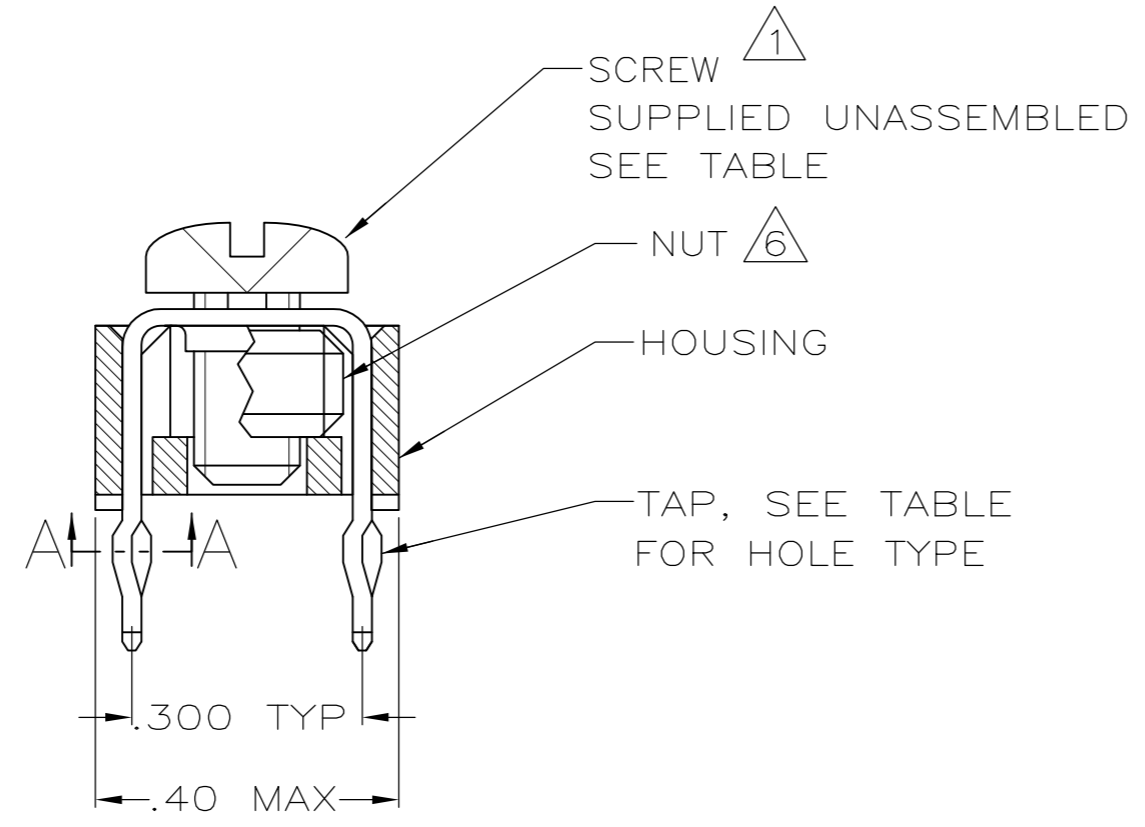
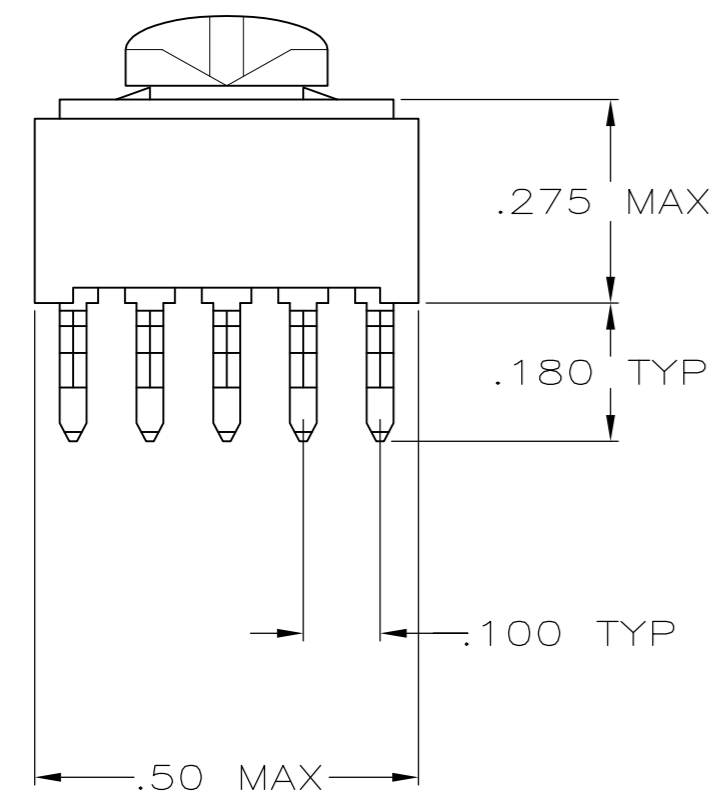
Keep Me Informed



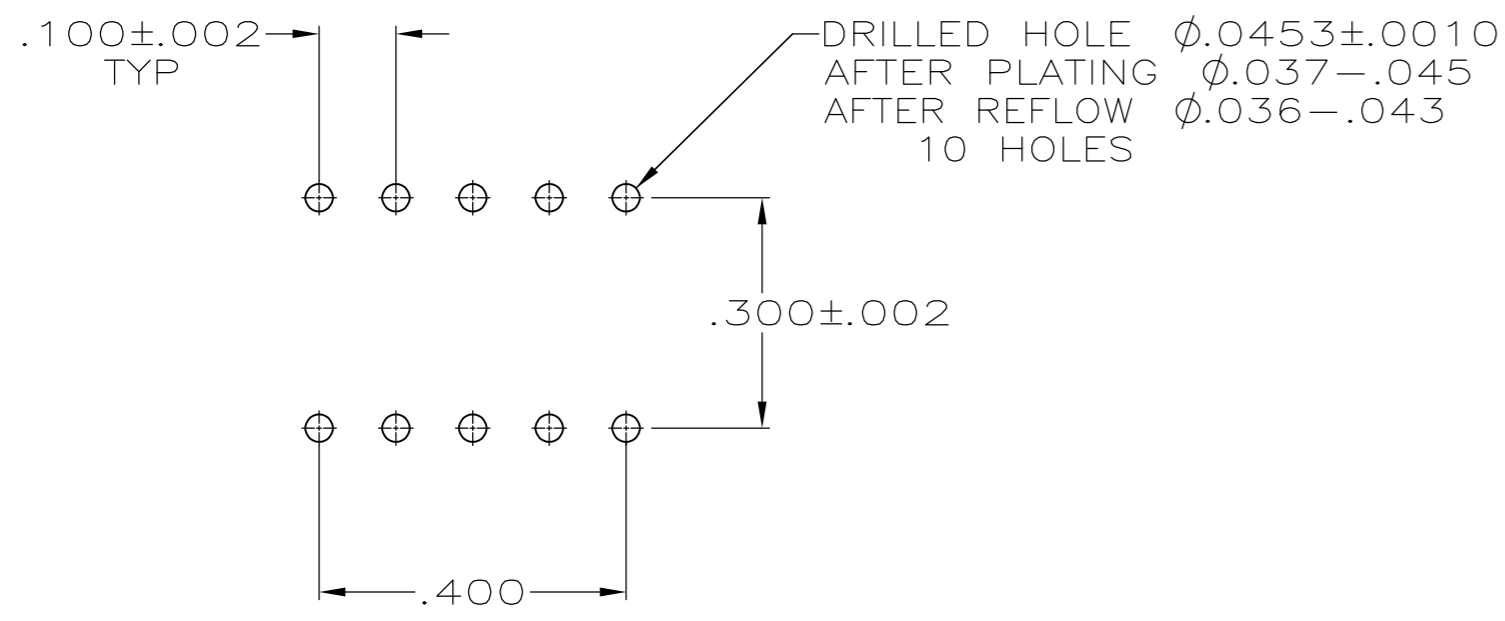
THIS DRAWING IS UNPUBLISHED. RELEASED FOR PUBLICATION
 © COPYRIGHT - By - ALL RIGHTS RESERVED.

LOC	DIST	REVISIONS					
GP	00	P	LTR	DESCRIPTION	DATE	DWN	APVD
		S1		REVISED PER ECO-11-004835	11MAR11	RK	HMR

.050±.005 DIA
 SECTION A-A
 SCALE 10:1
 10 PLACES



- ① TO PREVENT THREAD STRIPPING, SCREW TORQUE SHOULD NOT EXCEED 9 IN LBS.
- ② TAP HOLE IS 6-32UNC-2B, TWO MIN THREADS.
- ③ TAP HOLE IS M4 X 0.7, TWO MIN THREADS.
- ④ PACKAGED BULK.
- ⑤ PACKAGED INDIVIDUALLY.
- ⑥ NUT INCREASES TORQUE VALUE TO 26 IN LBS.
- ⑦ HOUSING: NYLON UL 94V-0. TAP: COPPER ALLOY 735, .025 THICK.
- ⑧ TAP: .000150 TIN-LEAD OVER .000050 NICKEL.
- ⑨ CLEARANCE HOLE FOR A 6-32 SCREW.
- ⑩ TAP: .000150 TIN OVER .000050 NICKEL.



PC BOARD PATTERN

PACKAGE	FINISH	HOLE TYPE	HOUSING COLOR	HOUSING AND TAP ASSEMBLED	SCREW	PART NO.
	④	⑩	②	BLACK	YES	993879-1 9-55556-0
	④	⑧	⑨	BLACK	⑥ YES (W/NUT)	NO 1-55556-3
	④	⑧	⑨	BLACK	⑥ YES (W/NUT)	993879-1 1-55556-2
OBSOLETE	⑤	⑧	②	BLACK	YES	993879-1 1-55556-1
SUPSD BY -9	-	⑧	③	BLACK	YES	NO 1-55556-0
	④	⑧	③	BLACK	YES	M4 X 0.7 X 6MM 55556-9
SUPSD BY -4	-	⑧	②	WHITE	YES	993879-1 55556-8
SUPSD BY -4	-	⑧	②	GREEN	YES	993879-1 55556-7
SUPSD BY -4	-	⑧	②	BLUE	YES	993879-1 55556-6
SUPSD BY -4	-	⑧	②	RED	YES	993879-1 55556-5
	④	⑧	②	BLACK	YES	993879-1 55556-4
	④	⑧	②	BLACK	YES	NO 55556-3
OBSOLETE	-	⑧	②	BLACK	NO	993879-1 55556-2
	-	⑧	②	BLACK	NO	NO 55556-1

THIS DRAWING IS A CONTROLLED DOCUMENT.

DIMENSIONS: INCHES	TOLERANCES UNLESS OTHERWISE SPECIFIED:	DWN J.McCLINTON 1-11-88	TE Connectivity TAP ASSEMBLY, POWER DISTRIBUTION
	0 PLC ± -	CHK R.STONE 1-11-88	
	1 PLC ± -	APVD M.GALLOWAY 1-11-88	
	2 PLC ± -	NAME	
	3 PLC ± .010	PRODUCT SPEC 108-11030	SIZE A2
	4 PLC ± -	APPLICATION SPEC 114-1100	CAGE CODE 00779
	ANGLES ± -	WEIGHT	DRAWING NO C=55556
MATERIAL ⑦	FINISH	CUSTOMER DRAWING	RESTRICTED TO

SCALE 4:1 SHEET 1 OF 1 REV S1