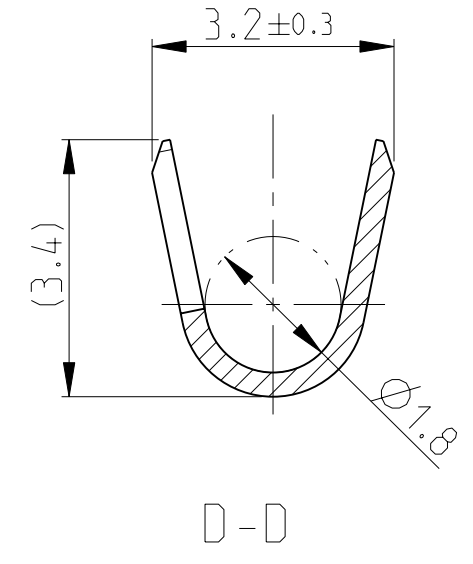
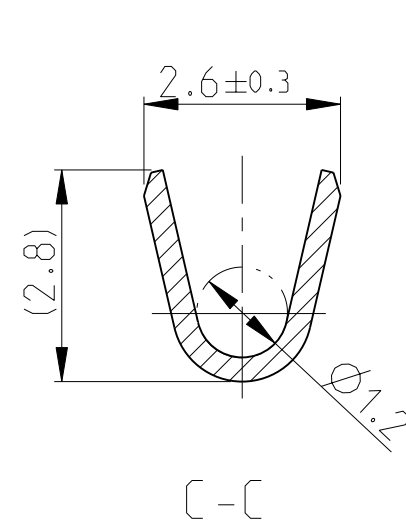
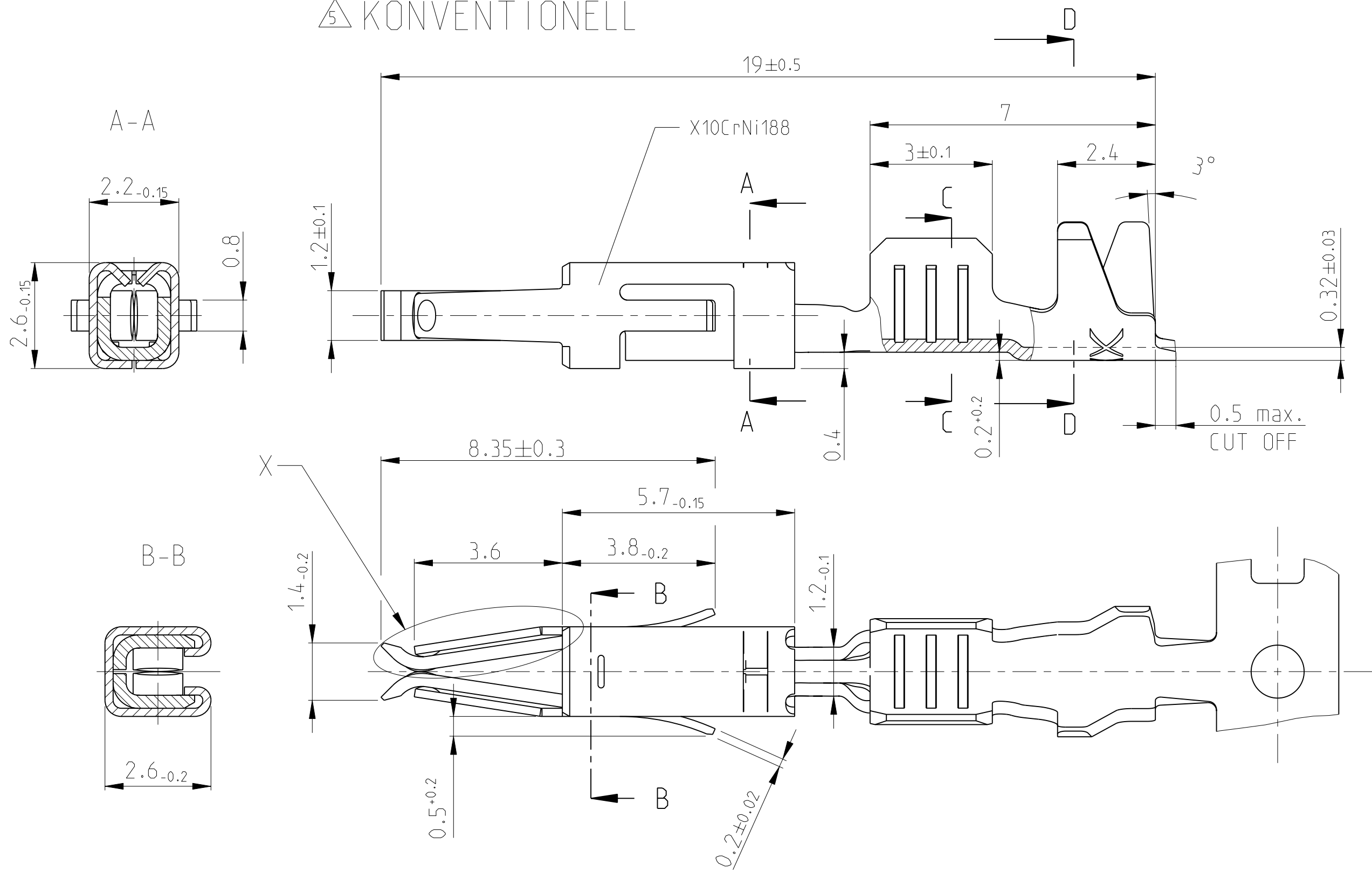


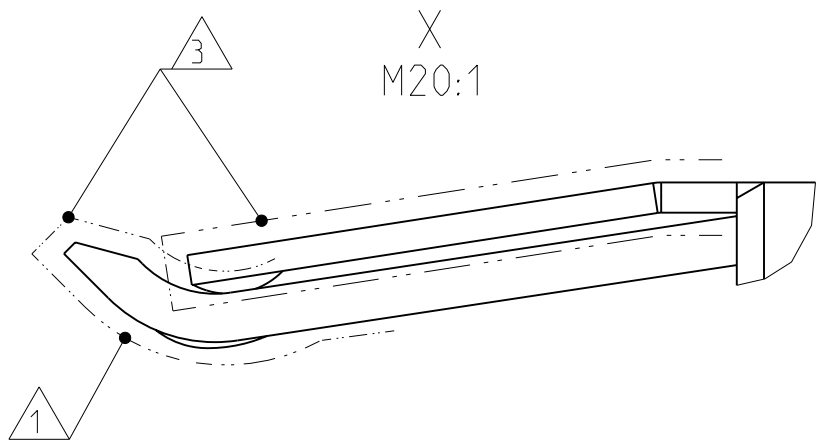
LOC		DIST		REVISIONS			
P	LTR	DESCRIPTION	DATE	DWN	APVD		
	J2	Zeichnung ueberarbeitet	01.04.98	Bers			
	J3	spring dimple modified	15.08.05	Kone			
	K	option for TTD version added	03AUG08	Abr	Brun		
	K1	drawing adapted	06APR09	Abr	Brun		

5 KONVENTIONELL

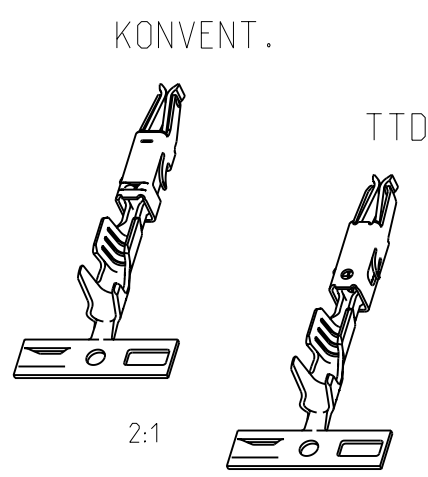
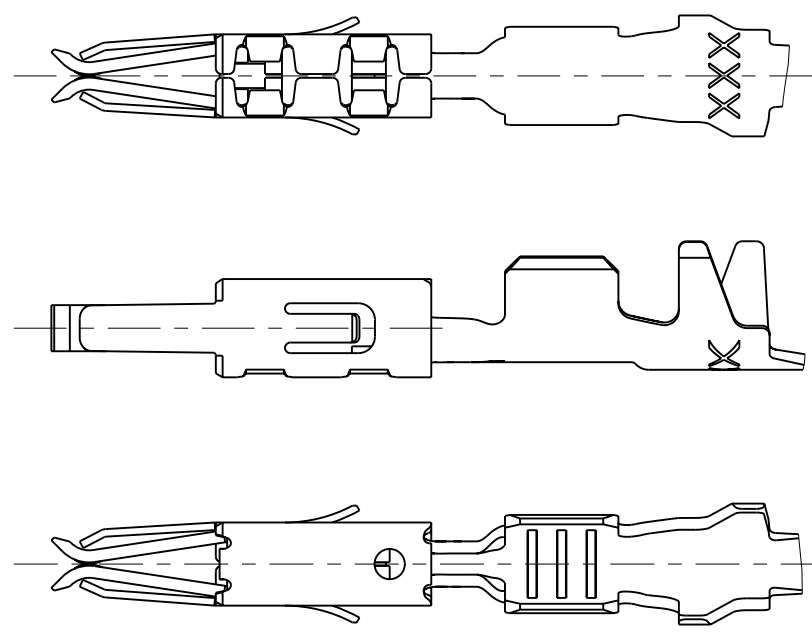


NOTES  
Bemerkungen

- 1 SELECTIVE GOLD PLATED MIN. 0.8 µm OVER NI  
selektiv vergoldet 0.8 µm ueber Ni
- 2 TIN PLATED MIN. 0.2 µm OVER NI  
verzinkt 0.2 µm ueber Ni
- 3 CONTACT SURFACE SEL. GOLD PLATED MIN. 0.8 µm OVER NI  
CANTILEVER SPRING COMPLETELY GOLD PLATED ON BOTH SIDES  
sel. vergoldet auf der Kontaktoberseite 0.8 µm min. ueber Ni  
Ueberfeder komplett auf beiden Seiten vergoldet
- 4 WIRE RANGE : 0.5 - 1.0 mm<sup>2</sup>  
INSULATION-Ø : 1.4 - 2.0 mm (FLR)  
Drahtgroessebereich : 0.5 - 1.0 mm<sup>2</sup>  
Isolations-Ø : 1.4 - 2.0 mm (FLR)



6 TWO TRACK DIE  
M 5:1



SINGLE CRIMP Einzelanschlag	DOUBLE CRIMP Doppelanschlag OFF / VON	WITH mit			
		0.2	0.35	0.5	1.0
	0.2		X		
	0.35	X		X	
X	0.5		X		
X	1.0				

VERSION	LP NO	SURFACE / Oberflaeche	MATERIAL	PART NO	REV
5	962945-6	3 2	CuSn4	962943-6	K
5	962945-5	1 2	CuFe2	962943-5	K
5	962945-4	1 3 2	CuSn4	962943-4	K
5	962945-3	1 2	CuSn4	962943-3	K
6	962945-2	PRETIN	CuFe2	962943-2	K
6	962945-1	PRETIN	CuSn4	962943-1	K

THIS DRAWING IS A CONTROLLED DOCUMENT FOR TYCO ELECTRONICS CORPORATION  
IT IS SUBJECT TO CHANGE AND THE CONTROLLING ENGINEERING ORGANIZATION  
SHOULD BE CONTACTED FOR THE LATEST REVISION.

DWN: R.Hofer 06 JUN 1989  
CHK: H.Gehrke 13 AUG 1992  
APVD: Bleicher, M. 03 AUG 2008

Tyco Electronics AMP GmbH  
64625 Bensheim (Germany)

NAME: MICRO TIMER 2 CONTACT WITH DOUBLE LOCKING LANCE mit doppelter Rastfeder

SIZE: A2 CAGE CODE: 00779 DRAWING NO: 962943 RESTRICTED TO: -  
SCALE: 10:1 SHEET: 1 OF 1 REV: K1

MATERIAL: - DIMENSIONS: mm TOLERANCES UNLESS OTHERWISE SPECIFIED: 1 PLC ±, 2 PLC ±, 3 PLC ±, 4 PLC ±, ANGLES ±2°, FINISH: -

APPLICATION SPEC: 108-18386  
114-18081  
WEIGHT: 0.3 g  
CUSTOMER DRAWING