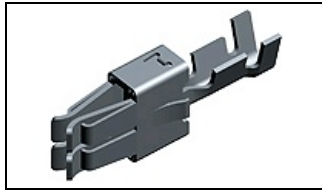


964324-1 Product Details

[Share](#) [Print](#) [Email](#)



964324-1

TE Internal Number: 964324-1
Active

[View 3D PDF](#)

Timer Contacts

Always EU RoHS/ELV Compliant (Statement of Compliance)

Product Highlights:

- Timer Products Product Line
- Standard Power-Timer Series
- Wire-to-Wire
- Applies To Wire/Cable
- Contact

[View all Features](#)

Quick Links

- ▶ Pricing & Availability
- ▶ Search for Tooling
- ▶ Product Feature Selector
- ▶ Contact Us About This Product

[Add to My Part List](#) [Request Sample](#) [Find Similar Products](#) [Buy Product](#)

Documentation & Additional Information

Product Drawings:

- STANDARD POWER TIMER CONTACT TYP A (PDF, English)
- STANDARD-POWER-TIMER CONTACT TYP A (PDF, English)

Catalog Pages/Data Sheets:

- None Available

Product Specifications:

- None Available

Application Specifications:

- Standard Power Timer Kontakt (PDF, English)
- Standard Power Timer Contact (PDF, English)
- Allgemeine Crimpspezifikation / GENERAL CRIMP SPEC. (PDF, German)

Instruction Sheets:

- None Available

CAD Files: (CAD Format & Compression Information)

- 2D Drawing (DXF, Version B)
- 3D Model (IGES, Version B)
- 3D Model (STEP, Version B)

Additional Information:

- Product Line Information

Related Products:

- Tooling

[List all Documents](#)

Product Features (Please use the Product Drawing for all design activity)

Product Type Features:

- Product Line = Timer Products
- Product Type = Contact
- Cable Type = FLR (Thin Walled Cable)
- Wire/Cable Type = Discrete Wire
- Insulation Support = With

Electrical Characteristics:

- Contact - Rated Current (A) = 40

Termination Features:

- Wire/Cable Size (AWG) = 17 - 20
- Wire/Cable Size (mm²) = 0.5 - 1
- Termination Method to Wire/Cable = Crimp

Dimensions:

- Mating Area Interface Dimensions (mm[in]) = 4.80 x 0.80 [.189 x .031], 5.80 x 0.80 [.228 x .031], 6.30 x 0.80 [.248 x .031]

Contact Features:

- Contact Type = Socket
- Contact Design = Flat, Modified Springs
- Contact Base Material = CuFe2
- Contact Plating, Mating Area, Material = Pre-Tin

Configuration Features:

- GET 0.64 Connector System = No
- Single Wire Sealing System = No

Industry Standards:

- RoHS/ELV Compliance = RoHS compliant, ELV compliant
- Lead Free Solder Processes = Not relevant for lead free process
- RoHS/ELV Compliance History = Always was RoHS compliant
- Agency/Standard = IEC 664/664A (DIN VDE 0110)

Environmental:

- Operating Temperature (°C [°F]) = -40 - +130 [-40 - +266]

Conditions for Usage:

- Applies To = Wire/Cable
- Accepts Wire Insulation Diameter, Range (mm[in]) = 1.40 - 2.10 [0.055 - 0.083]

Operation/Application:

- Application Use = Wire-to-Wire
- Contact Transmits (Typical Application) = Power

Packaging Features:

- Packaging Method = Reel
- Packaging Quantity = 2,100

Other:

- Series = Standard Power-Timer
- Brand = AMP
- Comment = Refer to the application and product specification for additional information.

Corporate Information

[About TE](#)
[Investors](#)
[News Room](#)
[Supplier Portal](#)
[Careers](#)
[Terms & Conditions](#)
[Privacy Policy](#)

Quick Links

[Distributor Inventory](#)
[Product Cross Reference](#)
[Documents & Drawings](#)
[Product Compliance Support Center](#)
[Site Map](#)

Customer Support

[Email or Chat With Us](#)
[Find a Phone Number](#)
[Knowledge Base](#)
[Manage Your Account](#)

Keep Me Informed

