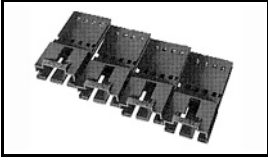


## 103653-9 Product Details

[Share](#) [Print](#) [Email](#)



**103653-9**

TE Internal Number: 103653-9

**Active**

[View 3D PDF](#)

### .100 AMPMODU Headers, Housings & Contacts

Always EU RoHS/ELV Compliant  
(Statement of Compliance)

#### Product Highlights:

- Connector
- Housing
- Connector Style = Plug
- Contact Type = Pin
- 2.54 mm Centerline

[View all Features](#)

### Quick Links

- ▶ [Pricing & Availability](#)
- ▶ [Search for Tooling](#)
- ▶ [Product Feature Selector](#)
- ▶ [Contact Us About This Product](#)

[Add to My Part List](#) [Request Sample](#) [Find Similar Products](#)  
[Buy Product](#)

### Documentation & Additional Information

#### Product Drawings:

- [PIN HOUSING, AMPMODU MTE, SINGLE ROW, .100 CL POLARI...](#) (PDF, English)

#### Catalog Pages/Data Sheets:

- [AMP MODU MTE Section of Catalog 1307819](#) (PDF, English)
- [AMPMODU\\_INTERCONNECTION\\_SYSTEM\\_SECTION5\\_CONT](#) (PDF, English)
- [AMPMODU\\_MTE\\_INTERCONNECT\\_SYSTEM\\_QRG\\_4-1773458-0](#) (PDF, English)

#### Product Specifications:

- None Available

#### Application Specifications:

- [AMPMODU MTE Interconnection System](#) (PDF, English)

#### Instruction Sheets:

- None Available

#### CAD Files: (CAD Format & Compression Information)

- [2D Drawing](#) (DXF, Version P)
- [3D Model](#) (IGES, Version P)
- [3D Model](#) (STEP, Version P)

[List all Documents](#)

#### Additional Information:

- [Product Line Information](#)

#### Related Products:

- [Tooling](#)

### Product Features (Please use the Product Drawing for all design activity)

#### Product Type Features:

- Product Type = Connector
- Connector Type = Housing
- [Termination Method to Wire/Cable](#) = Crimp, Insulation Displacement Crimp (IDC)
- [Mating Connector Lock](#) = With
- [Connector Series](#) = MTE
- [Keyed](#) = No
- Mating Connector Lock Type = Detent Latching

#### Body Features:

- Row-to-Row Spacing (mm [in]) = 2.54 [0.100]

#### Configuration Features:

- [Number of Positions](#) = 10
- [Number of Rows](#) = 1

#### Industry Standards:

- [RoHS/ELV Compliance](#) = RoHS compliant, ELV compliant
- [Lead Free Solder Processes](#) = Not relevant for lead free process
- [RoHS/ELV Compliance History](#) = Always was RoHS compliant

#### Other:

**Contact Features:**

- Contact Type = Pin

**Housing Features:**

- Connector Style = Plug
- Centerline (mm [in]) = 2.54 [0.100]
- Mating Alignment = With
- Mating Alignment Type = Latched
- Housing Color = Black
- UL Flammability Rating = UL 94V-0
- Housing Material = Thermoplastic - GF

- Brand = AMP

**Corporate Information**

[About TE](#)  
[Investors](#)  
[News Room](#)  
[Supplier Portal](#)  
[Careers](#)  
[Terms & Conditions](#)  
[Privacy Policy](#)

**Quick Links**

[Distributor Inventory](#)  
[Product Cross Reference](#)  
[Documents & Drawings](#)  
[Product Compliance Support Center](#)  
[Site Map](#)

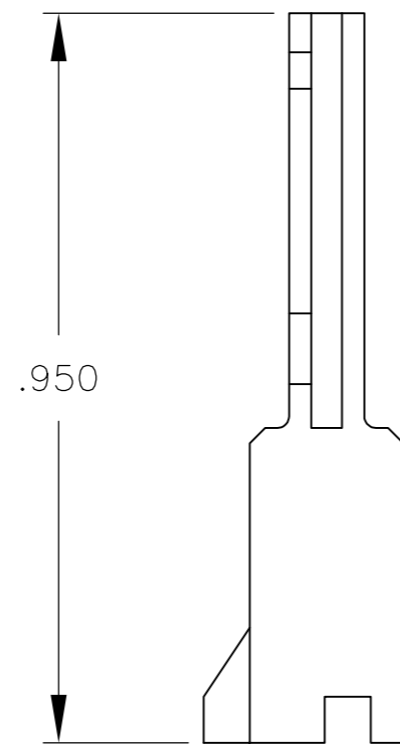
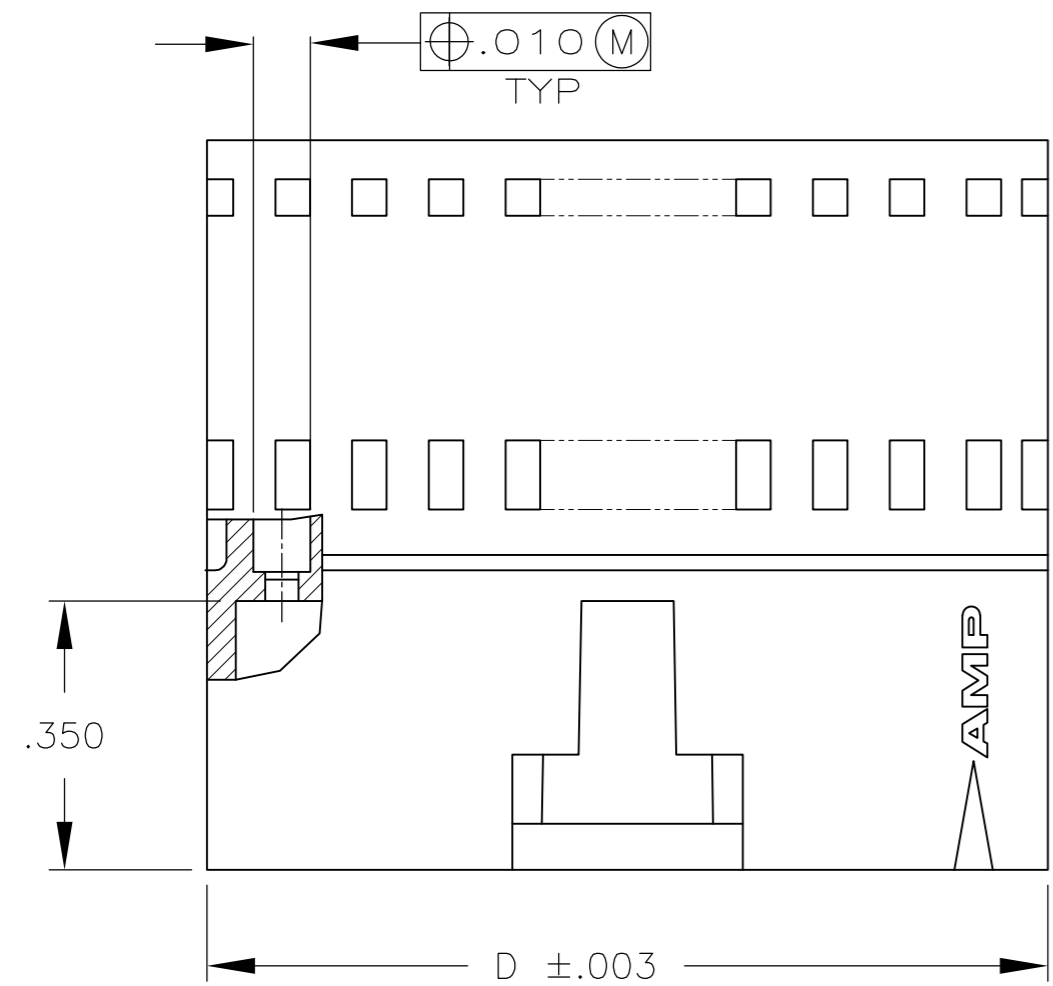
**Customer Support**

[Email or Chat With Us](#)  
[Find a Phone Number](#)  
[Knowledge Base](#)  
[Manage Your Account](#)

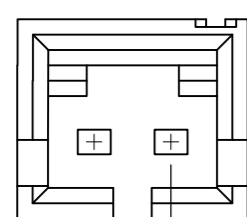
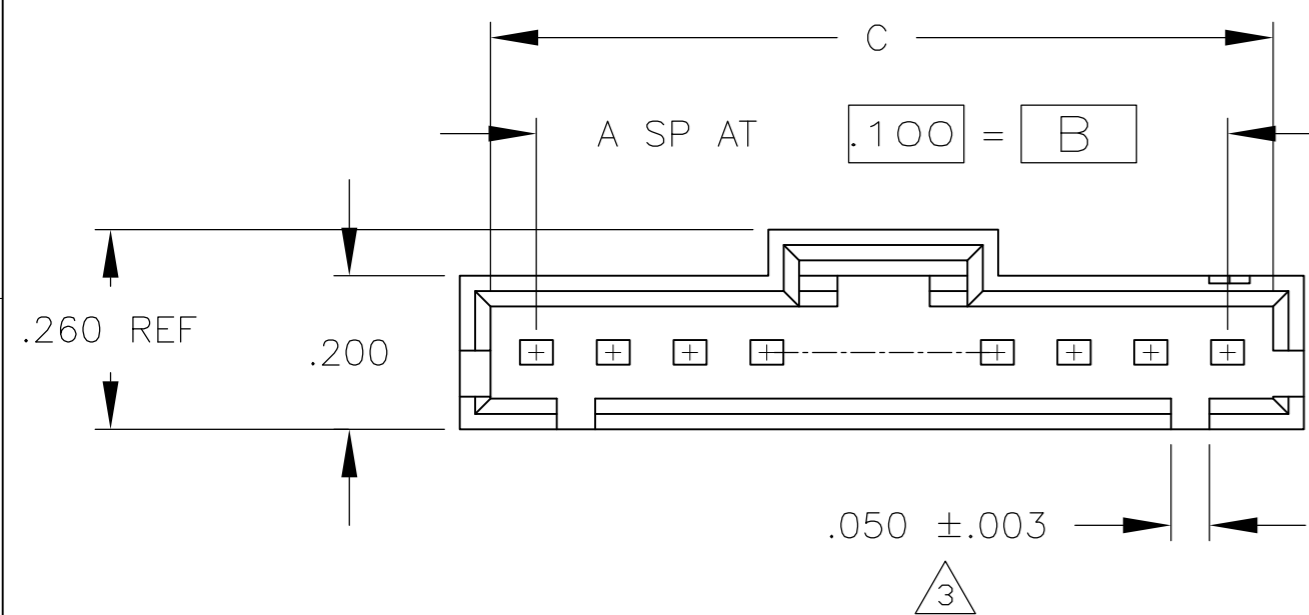
**Keep Me Informed**

THIS DRAWING IS UNPUBLISHED. RELEASED FOR PUBLICATION  
 © COPYRIGHT - By - ALL RIGHTS RESERVED.

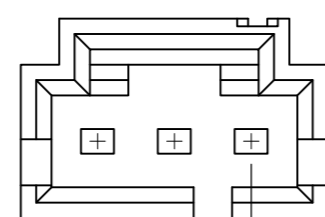
LOC		DIST		REVISIONS			
P	LTR	DESCRIPTION		DATE	DWN	APVD	
AD	39	P2		REVISED PER ECO-11-010839	25MAY11	RK	HMR



- ① PBT
- ② LCP
- ③ TOLERANCE IS  $+.007/-0.003$  FOR 6 POSITION AND SMALLER SIZES.



DETAIL FOR -1 ONLY  
(2 POSITION)



DETAIL FOR -2 ONLY  
(3 POSITION)

②	2.595	2.520	2.400	24	25	2-103653-4
②	2.495	2.420	2.300	23	24	2-103653-3
②	2.395	2.320	2.200	22	23	2-103653-2
②	2.295	2.220	2.100	21	22	2-103653-1
②	2.195	2.120	2.000	20	21	2-103653-0
②	2.095	2.020	1.900	19	20	1-103653-9
②	1.995	1.920	1.800	18	19	1-103653-8
②	1.895	1.820	1.700	17	18	1-103653-7
②	1.795	1.720	1.600	16	17	1-103653-6
②	1.695	1.620	1.500	15	16	1-103653-5
②	1.595	1.520	1.400	14	15	1-103653-4
②	1.495	1.420	1.300	13	14	1-103653-3
②	1.395	1.320	1.200	12	13	1-103653-2
②	1.295	1.220	1.100	11	12	1-103653-1
②	1.195	1.120	1.000	10	11	1-103653-0
②	1.095	1.020	.900	9	10	103653-9
②	.995	.920	.800	8	9	103653-8
②	.895	.820	.700	7	8	103653-7
②	.795	.720	.600	6	7	103653-6
①	.695	.620	.500	5	6	103653-5
①	.595	.520	.400	4	5	103653-4
①	.495	.420	.300	3	4	103653-3
①	.395	.320	.200	2	3	103653-2
①	.295	.220	.100	1	2	103653-1
MATERIAL	D	C	B	A	NO OF POSN	PART NUMBER
COLOR-BLACK						

THIS DRAWING IS A CONTROLLED DOCUMENT.		DWN R BROWN 28JUL00				
DIMENSIONS: INCHES		CHK K WRIGHT 28JUL00				
TOLERANCES UNLESS OTHERWISE SPECIFIED:		APVD K WRIGHT 28JUL00	NAME			
0 PLC ± -		PRODUCT SPEC	108-25034			
1 PLC ± -		APPLICATION SPEC	114-25026			
2 PLC ± -		WEIGHT	-			
3 PLC ± .005		SCALE	A2 00779 C=103653			
4 PLC ± -		CUSTOMER DRAWING	SCALE 4:1 SHEET 1 of 1 REV P2			
ANGLES ± -						
FINISH						
SEE TABLE						