

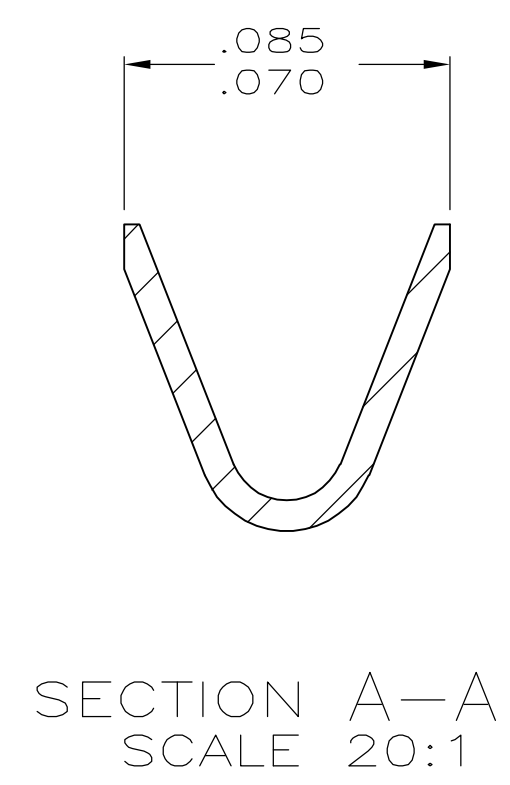
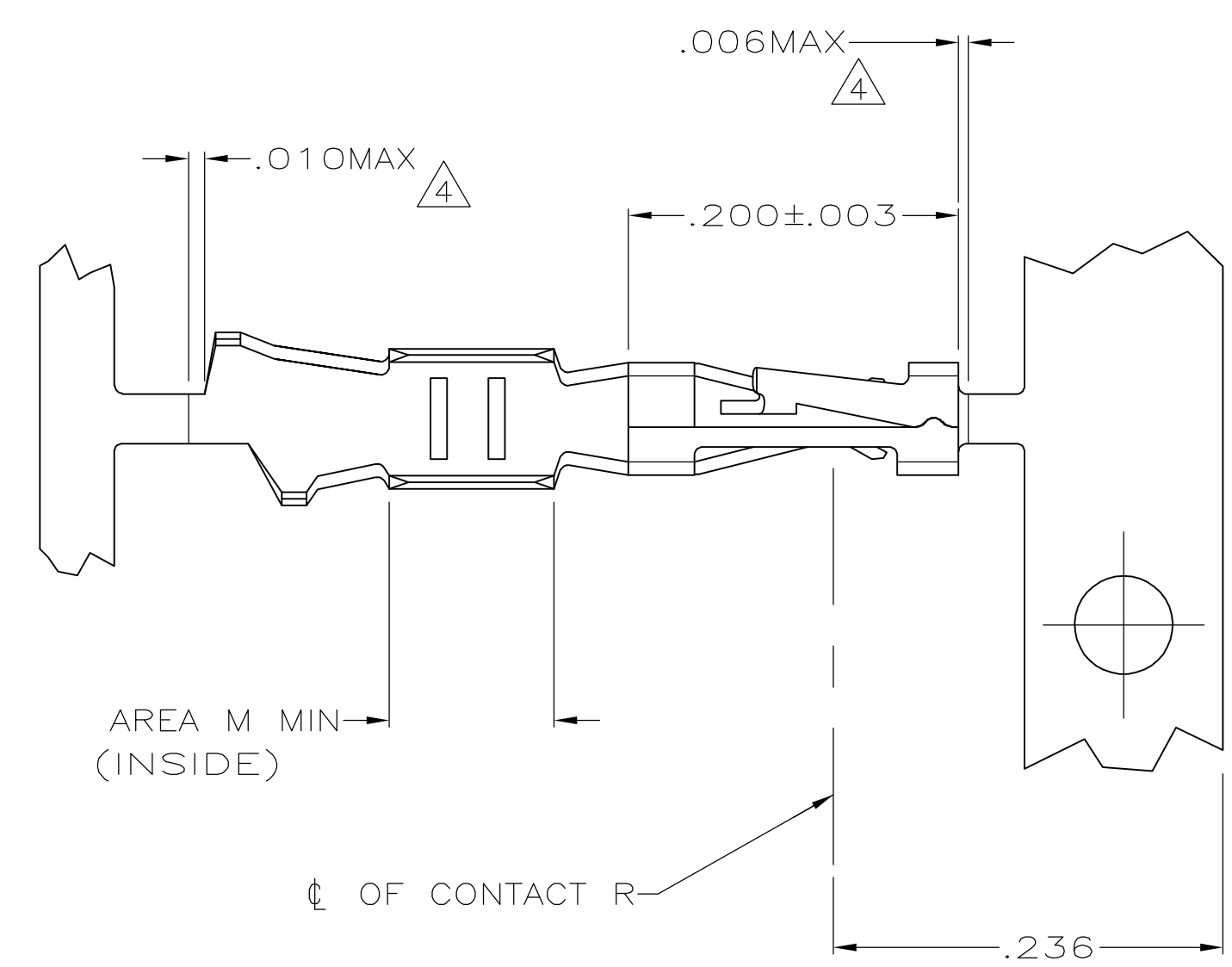
Distributed by:

JAMECO[®]
ELECTRONICS

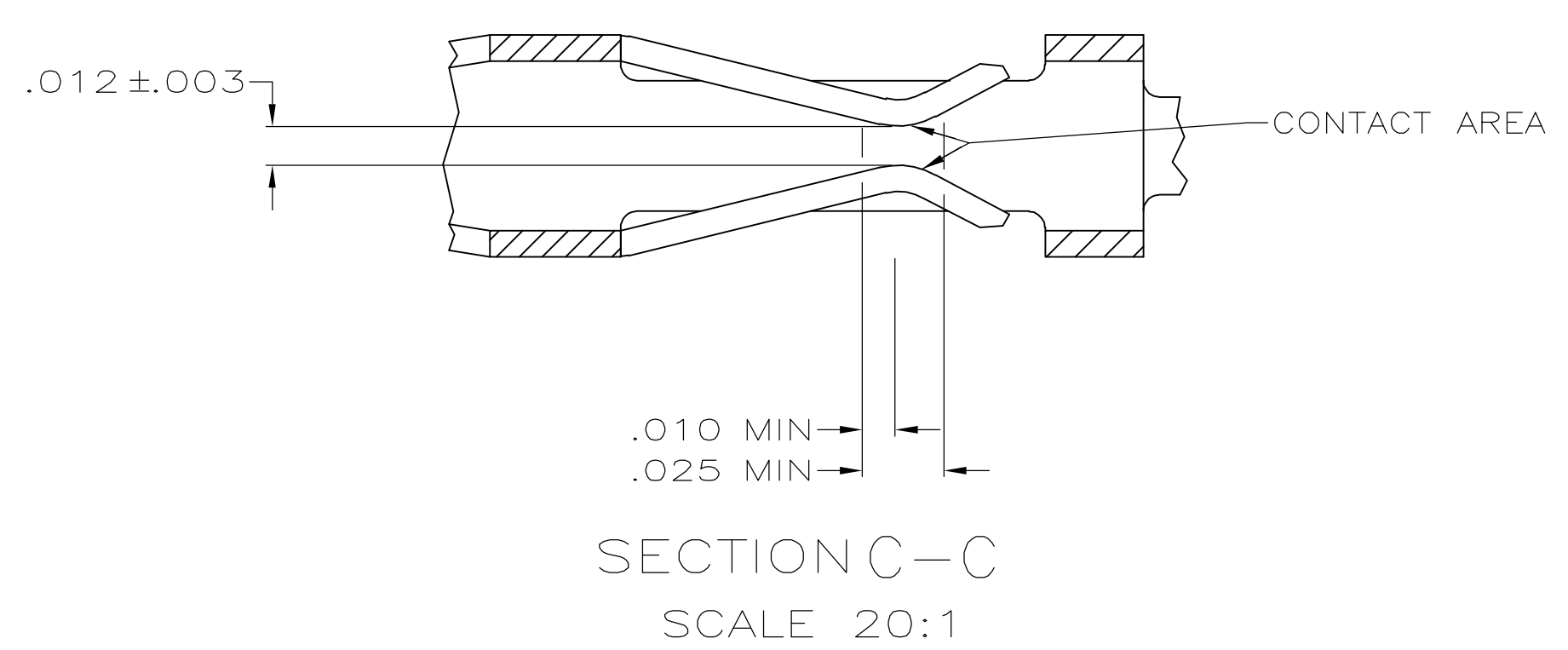
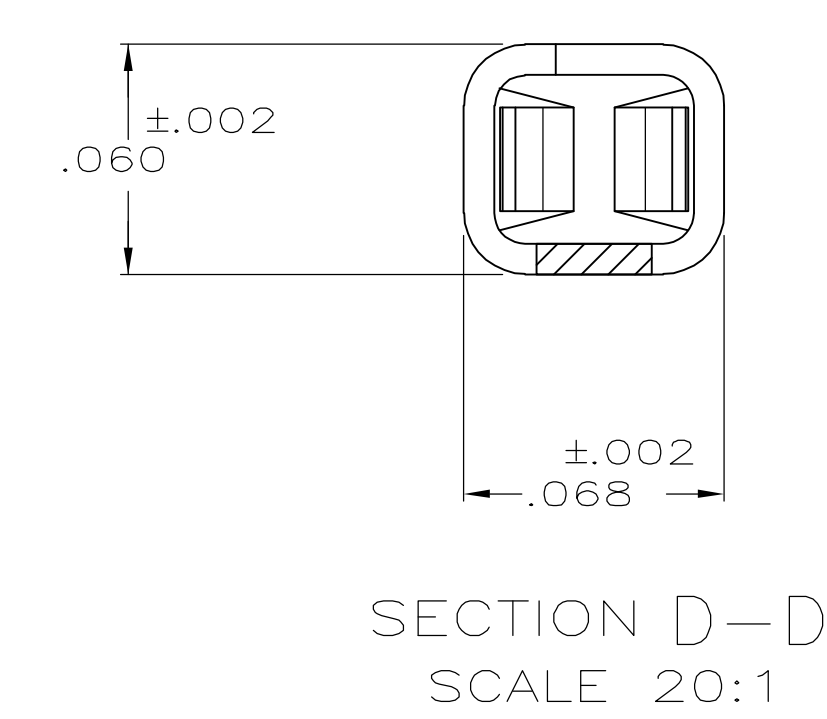
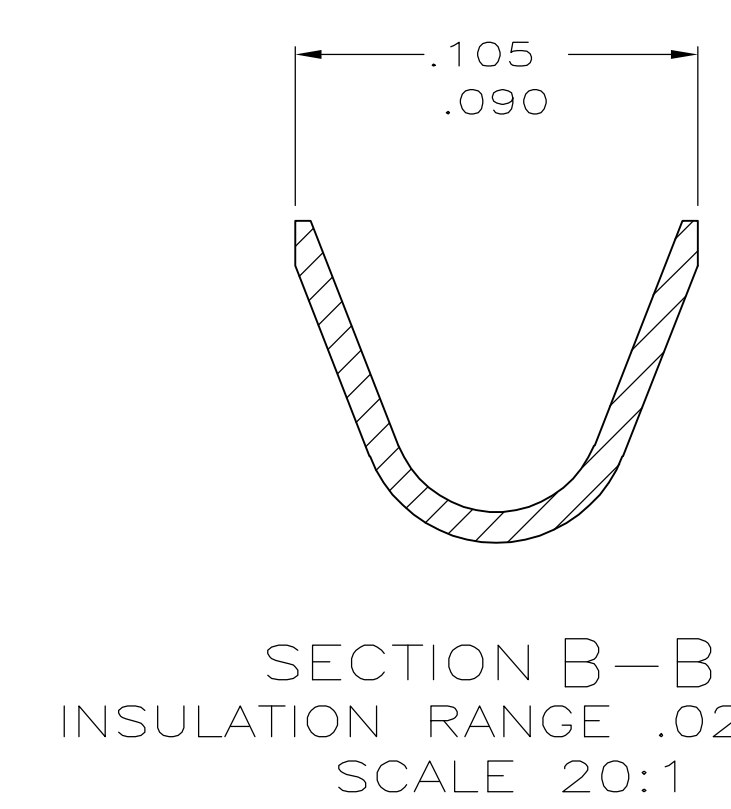
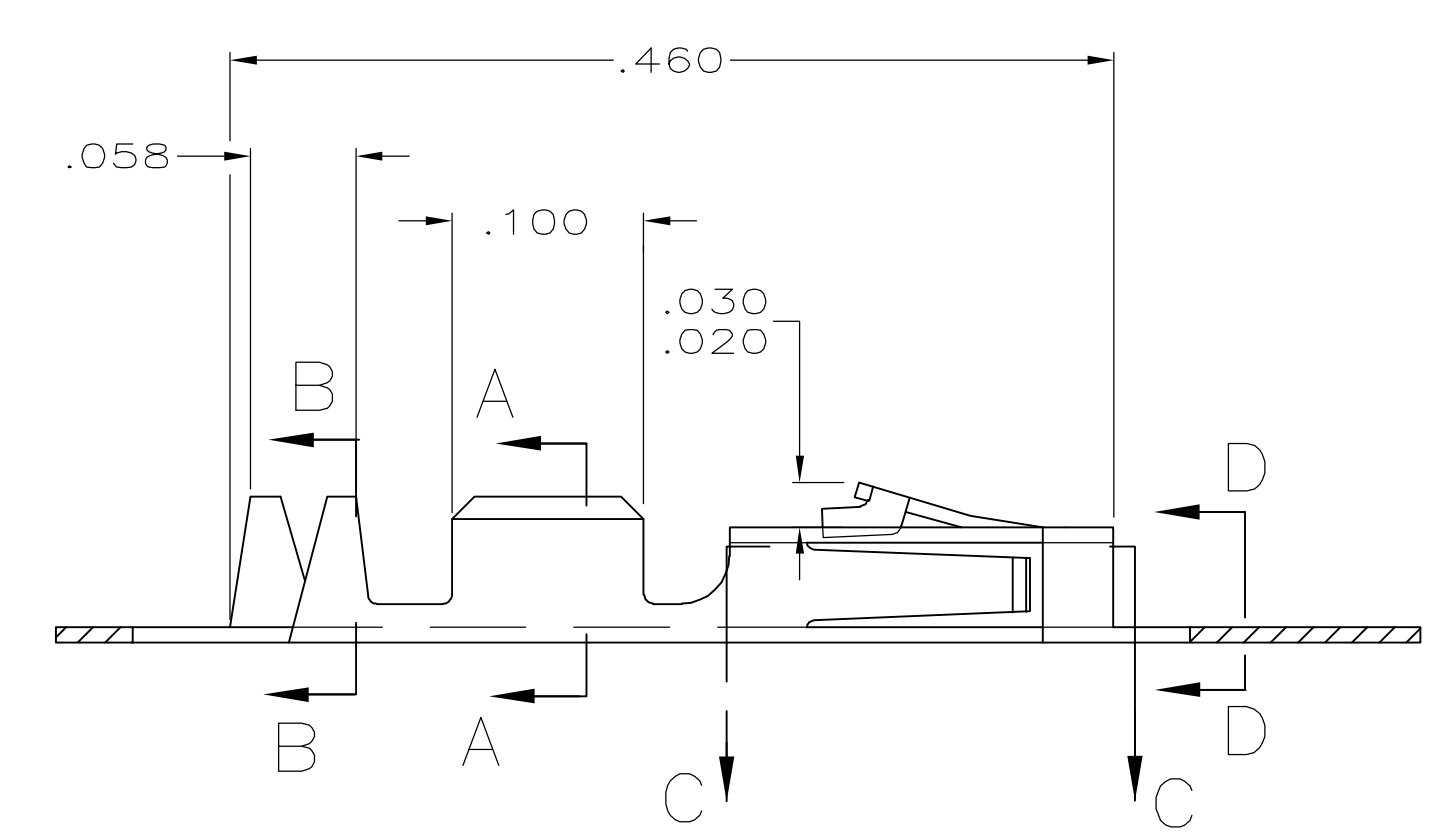
www.Jameco.com ♦ 1-800-831-4242

The content and copyrights of the attached
material are the property of its owner.

Jameco Part Number 895764



- 1 .000100 MIN BRIGHT TIN-LEAD OVER .000050 MIN NICKEL ON ENTIRE CONTACT
- 2 .000050 MIN NICKEL ON ENTIRE CONTACT; .000015 MIN GOLD ON CONTACT AREA; .000050 MIN BRIGHT TIN-LEAD ON AREA M.
- 3 .000050 MIN NICKEL ON ENTIRE CONTACT; .000030 MIN GOLD ON CONTACT AREA; .000050 MIN BRIGHT TIN-LEAD ON AREA M.
- 4 LOOSE PIECE CUT-OFF DIMENSION.
- 5 .000100-.000200 BRIGHT TIN PER 112-65-2 OVER .000050-.000100 NICKEL PER 112-25-2, ENTIRE POST.
- 6 PREPLATED MATERIAL: (.000015 MIN GOLD ON CONTACT AREA, .000050-.000100 BRIGHT TIN ON AREA M, ALL OVER .000050-.000100 NICKEL ON ENTIRE CONTACT).
- 7 PREPLATED MATERIAL: (.000030 MIN GOLD ON CONTACT AREA, .000050-.000100 BRIGHT TIN ON AREA M, ALL OVER .000050-.000100 NICKEL ON ENTIRE CONTACT).



REMARKS	FINISH	PART NO
LOOSE PIECE	7	1-104479-3
LOOSE PIECE	6	1-104479-2
LOOSE PIECE	5	1-104479-1
-	7	1-104479-0
-	6	104479-9
-	5	104479-8
LOOSE PIECE	3	104479-7
LOOSE PIECE	2	104479-6
LOOSE PIECE	1	104479-5
-	3	104479-4
-	2	104479-3
-	1	104479-2

THIS DRAWING IS A CONTROLLED DOCUMENT.

DW: C. OBERMAN 5-9-89		Tyco Electronics Corporation
CHK: K. HELM 5-12-89		Harrisburg, Pa 17105-3608
APP'D: R. ELICKER 5-12-89	NAME:	CONTACT, CRIMP SNAP-IN AMPMODU SHORT POINT, 20-24 AWG
PRODUCT SPEC: 108-1472	SIZE:	A1
APPLICATION SPEC: 114-25038	CAGE CODE:	00779
MATERIAL: PHOSPHOR BRONZE	DRAWING NO:	104479
FINISH: SEE TABLE	WEIGHT:	-
	CUSTOMER DRAWING	SCALE 10:1 SHEET 1 OF 1 REV P