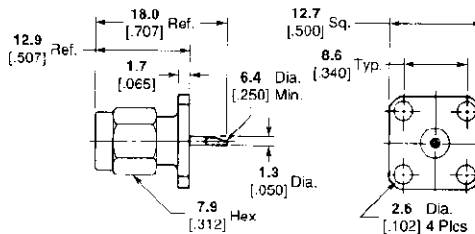
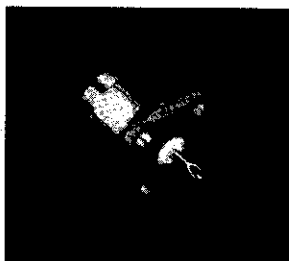


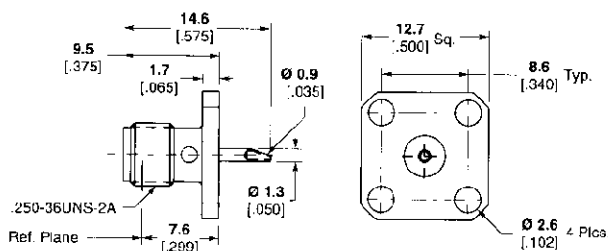
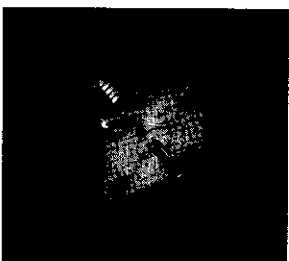
SMA Connectors (Continued)
Panel Mount, Solder Pot Terminal

4 Hole Flange Mount Plug Receptacle



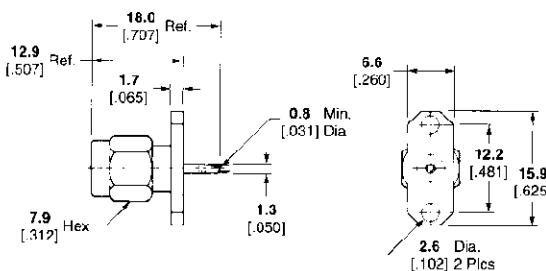
Body Material & Finish	Contact Captivation	RF Leakage db min.	Temperature Range	M/A-COM Model No.	Part No.
Stainless, Passivated	Epoxy	N/A	-65 to 125° C	2051-0000-02	1052324-1

4 Hole Flange Mount Jack Receptacle



Body Material & Finish	Contact Captivation	RF Leakage db min.	Temperature Range	M/A-COM Model No.	Part No.
Stainless, Passivated	Epoxy	-60 fGHz	-65 to 125° C	2052-0000-02	1052422-1

2 Hole Flange Mount Plug Receptacle



Body Material & Finish	Contact Captivation	RF Leakage db min.	Temperature Range	M/A-COM Model No.	Part No.
Stainless, Passivated	Epoxy	-60 fGHz	-65 to 125° C	2051-1350-02	1052343-1