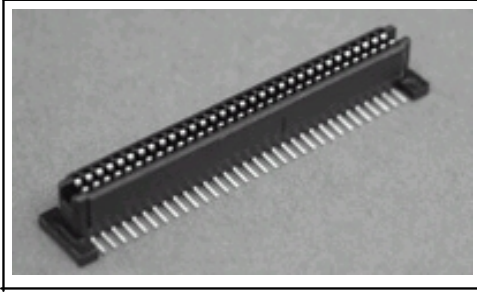


Product Details for 1 -120521 -1



1 -120521 -1

[Active](#)

.4mm, .5mm, .6mm, .8mm, 1mm, Fine Pitch, Surface Mount, Stacking Bd -to -Bd Connectors

[5 of 6 RoHS/ELV Compliant](#) ([Find RoHS Compliant Alternates/Compliance Statement](#))

Product Highlights:

- ? Receptacle
- ? Family Name = Free Height
- ? 1.00 mm Centerline
- ? Number of Positions = 64
- ? In -Line Contact Layout

[View all Features](#)

Quick Links

- [Check Pricing & Availability](#)
- [Search for Tooling](#)
- [View Mating Products \(18\)](#)
- [Product Feature Selector](#)
- [Contact Us About This Product](#)

Documentation & Additional Information

Product Drawings:

- ? [RECEPTACLE ASSY, 1.0mm FH\(IEEE1386\) CONNECTOR](#) (PDF, English)

Catalog Pages/Data Sheets:

- ? None Available

Product Specifications:

- ? None Available

Application Specifications:

- ? None Available

Instruction Sheets:

- ? None Available

CAD Files: ([CAD Format & Compression Information](#))

- ? [3D Model](#) (STEP, Version H)
- ? [3D Model](#) (IGES, Version H)
- ? [2D Drawing](#) (DXF, Version H)

[List all Documents](#)

Additional Information:

- ? [Product Line Information](#)

Additional Product Images:

- ? [Product Photo](#)

Related Products:

- ? [Tooling](#)
- ? [Mating Products \(18\)](#)

Product Features (Please use the Product Drawing for all design activity)

Product Type Features:

- ? [Product Type](#) = Receptacle
- ? [Number of Positions](#) = 64
- ? PCB Mount Angle = Vertical
- ? [Keyed](#) = No
- ? Comment = IEEE 1386 Mezzanine Connector.

Body Related Features:

- ? [Centerline \(mm \[in\]\)](#) = 1.00 [0.039]
- ? [Board -to -Board Stack Height \(mm \[in\]\)](#) = 8.00 [0.315], 9.00 [0.354], 10.00 [0.394]
- ? [Locating Posts](#) = With
- ? [Vacuum Cover](#) = Without
- ? Number of Rows = Dual

Contact Related Features:

- ? Family Name = Free Height
- ? [Contact Layout](#) = In -Line
- ? Contact Material = Copper Alloy
- ? [Contact Mating Area Plating](#) = Gold (50)
- ? Contact Termination Area Plating = Tin -Lead over Nickel

Housing Related Features:

- ? Housing Color = Black
- ? Housing Material = High Temperature Thermoplastic
- ? Housing Flammability Rating = UL 94V -0
- ? Housing Material Temperature = High

Industry Standards:

- ? [RoHS/ELV Compliance](#) = ELV compliant, 5 of 6 Compliant
- ? [Lead Free Solder Processes](#) = Wave solder capable to 240°C, Wave solder capable to 260°C, Wave solder capable to 265°C, Reflow solder capable to 245°C, Reflow solder capable to 260°C, Pin -in -Paste capable to 245°C, Pin in -Paste capable to 260°C

Packaging Related Features:

- ? [Packaging Method](#) = Tape & Reel

Other:

- ? Brand = AMP