

ECONOMY INTERCONNECTION SERIES (EIS) CONNECTORS

TE Connectivity's (TE) economy interconnection series (EIS) connectors are a compact, economical solution for high density wiring connections inside electric equipment. EIS connectors are available in standard and low profile wire-to-board and wire-to-wire configurations and are available with 2.5mm and 5.0mm centerlines. EIS connectors have a variety of features including a locking mechanism to ensure positive mating and a broad portfolio to address most design needs.

Key Features

- Wire-to-board and wire-to-wire configurations
- Standard and low profile receptacle designs
- Free hanging and panel mount cap designs
- 2.5mm and 5.0mm centerline pitch
- Locking mechanism and polarization features to ensure proper mating
- Guides for correct contact alignment
- Gold plated configurations available
- Crimp and IDC termination methods
- Positions range from 2 to 12

Key Benefits

- Highly reliable electrical connection
- Compact, economical solution for high density wiring connections
- Broad portfolio accommodates most application needs
- Design flexibility
- Some configurations include self retention features

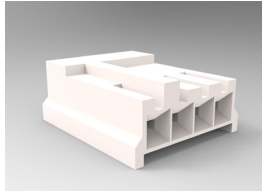
Applications

- Industrial machinery
- Factory automation
- Business and retail equipment
- Commercial and building equipment
- Household appliances
- Motor vehicles
- Broader consumer electronics

Economy Interconnection Series (EIS) Connectors

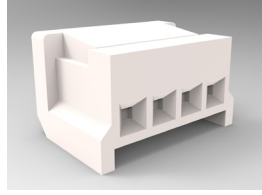
Mating Styles

Receptacle Connectors



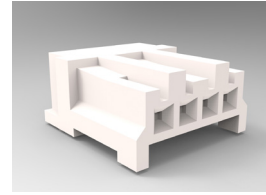
171822-x

Standard Type, Crimp



172142-x

Low Profile Type, Crimp



172054-x

172053-x

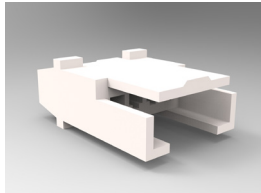
172052-x

172051-x

Standard Type, IDC

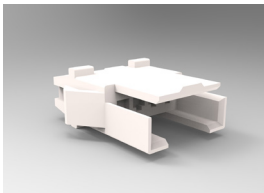
- Standard crimp receptacles mate to cap connectors for wire-to-wire applications and post headers for wire-to-board applications.
- Low profile crimp and standard IDC receptacles mate to post headers for wire-to-board applications
- Standard and low profile receptacle connectors use receptacle contacts
- Cap connectors use pin contacts

Cap Connectors



172211-x

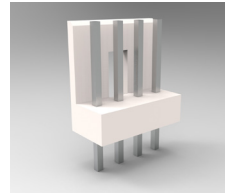
Free Hanging Type



172213-x

Panel Mount Type

Post Header



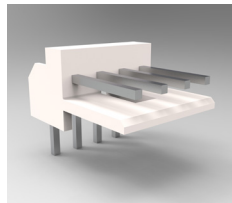
171825-x

172732-x

173081-x

172107-x

Vertical Mount Type



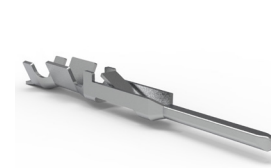
171826-x

176153-x

172107-x

Horizontal Mount Type

Contacts



See table
on page
3 for part
numbers

Pin Contact



See table
on page
3 for part
numbers

Receptacle Contact

Specifications

Product Spec	App Spec	Voltage	Current Rating (Amps)				Operating Temperature
			30 AWG	26 AWG	22 AWG	20 AWG	
108-5118	114-5035*	250	2	3	4	5	-20°C to 95°C

* Low profile connectors use Application Specification 114-5051

Economy Interconnection Series (EIS) Connectors

Contacts

Base PN		Material					Mating PN	Hand Tool	Applicator
Strip	Loose Piece	Contact Type	Wire Size (AWG)	Brass	Phosphor Bronze	Phosphor Bronze			
170263	170205	Receptacle	30 to 26	-1	-2	-3	171822, 172486	91562-1	2151084-1
170377	170430	Pin		-1	-2	-3	172211, 172213	91570-1	
170262	170204	Receptacle	26 to 20	-1	-2	-3	171822, 172486	91556-1	2151138-1
170376	170429	Pin		-1	-2	-3	172211, 172213	91566-1	
170355*	N/A	Receptacle	30 to 26	N/A	-1	N/A	172142	724663-1	2266701-1
170354*	170369*	Receptacle	26 to 22	N/A	-1	N/A	172142	91571-1	

-1 and -2 contact part numbers are pre-tinned. -3 contact part numbers are gold over bronze

Post Headers

Base PN	Description	Plating Material	Positions	Mating Part Numbers	
				Wire-to-Board Termination	
171825	Vertical, w/o Kink	Tin	2 to 12	171822, 172486, 172142	
172732	Vertical, w/ Kink	Tin	2 to 12		
171826	Horizontal, w/o Kink	Tin	2 to 12		
173081	Vertical, w/o Kink	Gold	2 to 12		
176153	Horizontal, w/o Kink	Gold	2 to 6		
172106	Vertical**, w/o Kink	Tin	2 to 6		
172107	Horizontal**, w/o Kink	Tin	2 to 4		
172487	Vertical, w/o Kink, Retention Reinforced	Tin	2 to 3	172486	

Receptacle Connectors

Base PN	Description	Termination Method	Wire Size (AWG)	Positions	Mating Part Numbers			
					Wire-to-Wire Termination	Wire-to-Board Termination	Pistol Tool / Mini-Press Tool	
171822	Standard, with Latch	Crimp	N/A	2 to 12	172211, 172213	171825, 172732, 171826, 173081, 176153	N/A	
172486	Standard, w/ Latch (Extraction-Reinforced)	Crimp	N/A	2 to 3				
172142	Low Profile, with Latch	Crimp	N/A	2 to 12				
172054	Standard, with Latch	IDC	28	2 to 20	N/A	171825, 171826	755425-1	723860-1
172053	Standard, with Latch	IDC	26	2 to 20				
172052	Standard, with Latch	IDC	24	2 to 20				
172051	Standard, with Latch	IDC	22	2 to 20				

Cap Connectors

Base PN	Type	Positions	Mating Part Numbers	
			Wire-to-Wire Termination	
172211	Free Hanging, with Latch	2 to 12	171822	
172213	Panel Mount, with Latch	2 to 8		

* Low profile

** Centerline = 5mm

TE Technical Support Center

USA:	1.800.522.6752
Canada:	1.905.475.6222
Mexico:	52.0.55.1106.0800
Latin/S. America:	54.0.11.4733.2200
Germany:	49.0.6251.133.1999
UK:	44.0.800.267666
France:	33.0.1.3420.8686
Netherlands:	31.0.73.6246.999
China:	86.0.400.820.6015

te.com

TE Connectivity, TE, TE connectivity (logo), and EVERY CONNECTION COUNTS are trademarks owned or licensed by the TE Connectivity Ltd. family of companies. All other logos, products and/or company names referred to herein might be trademarks of their respective owners.

The information given herein, including drawings, illustrations and schematics which are intended for illustration purposes only, is believed to be reliable. However, TE Connectivity makes no warranties as to its accuracy or completeness and disclaims any liability in connection with its use. TE Connectivity's obligations shall only be as set forth in TE Connectivity's Standard Terms and Conditions of Sale for this product and in no case will TE Connectivity be liable for any incidental, indirect or consequential damages arising out of the sale, resale, use or misuse of the product. Users of TE Connectivity products should make their own evaluation to determine the suitability of each such product for the specific application.

©2019 TE Connectivity Ltd. family of companies. All Rights Reserved.

1-1773972-5 03/19 DND