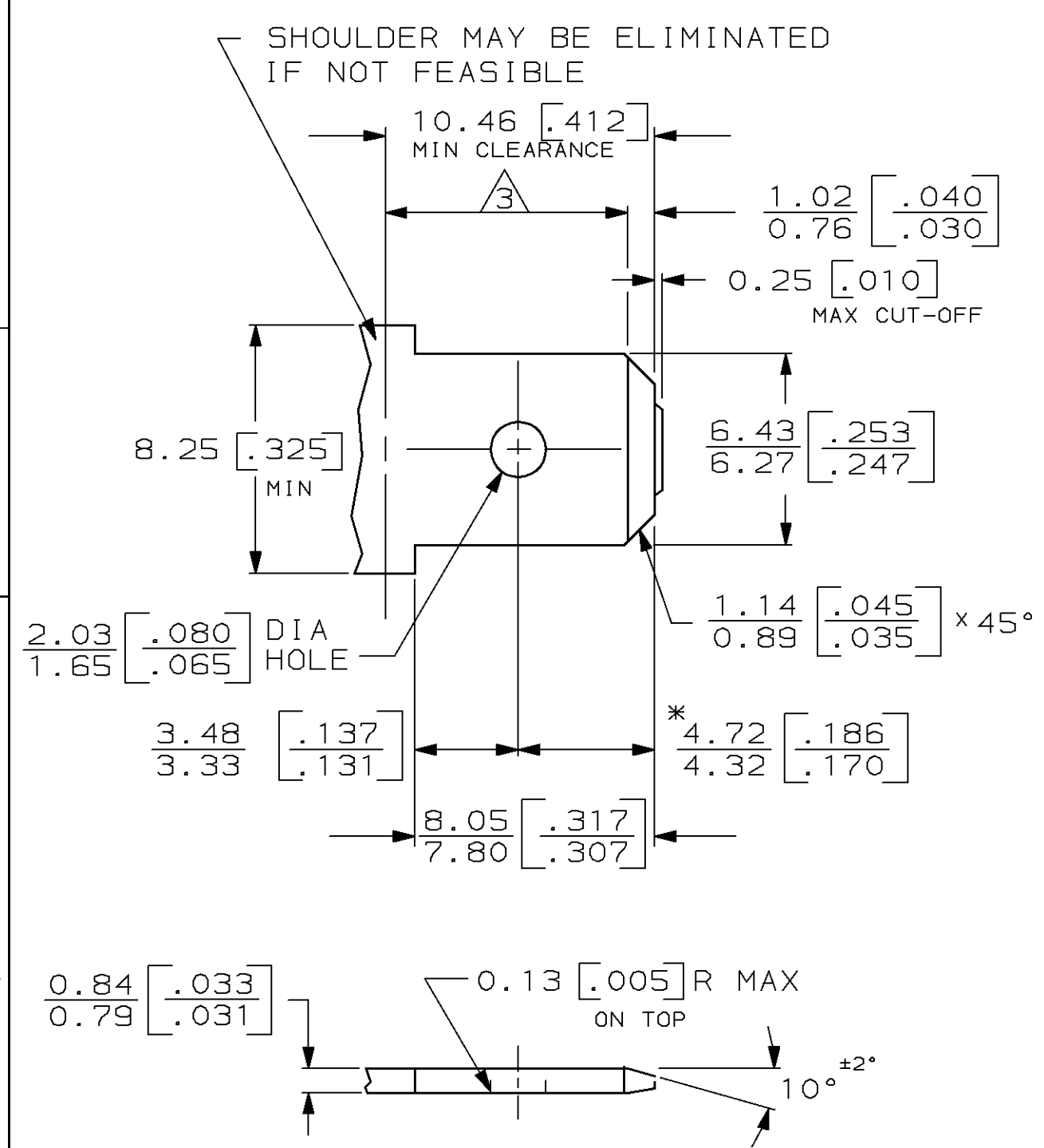
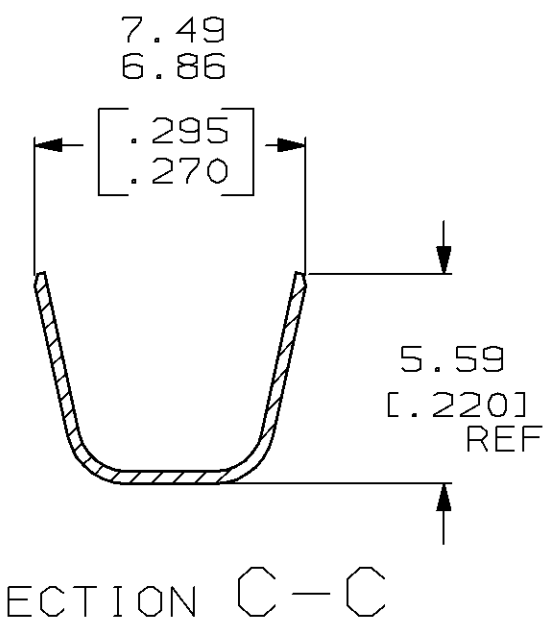
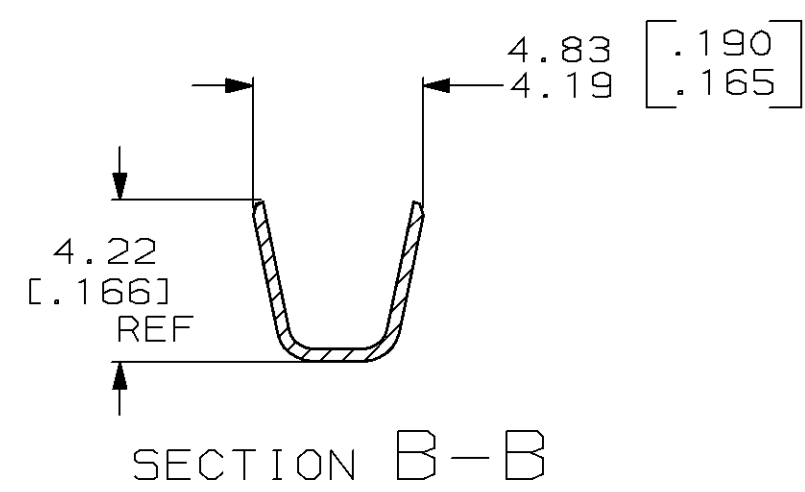
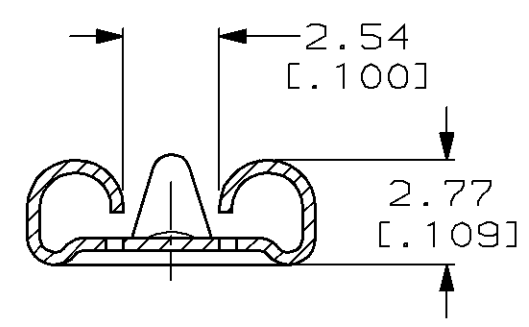
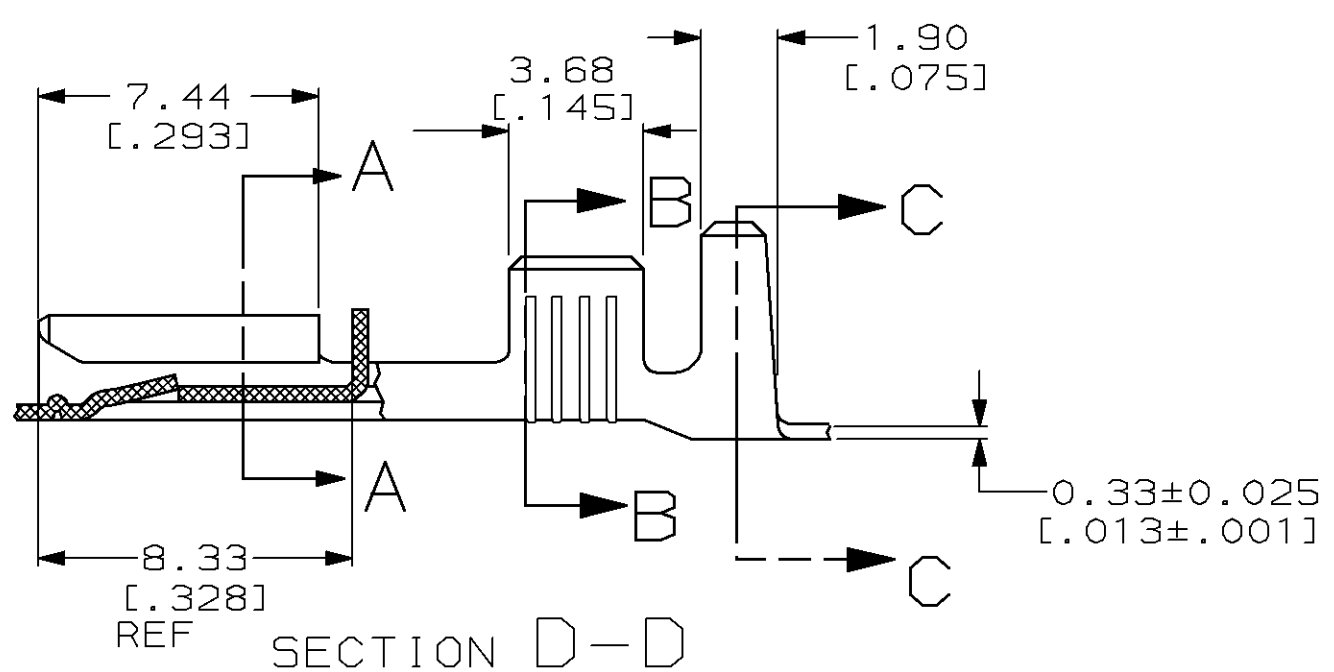
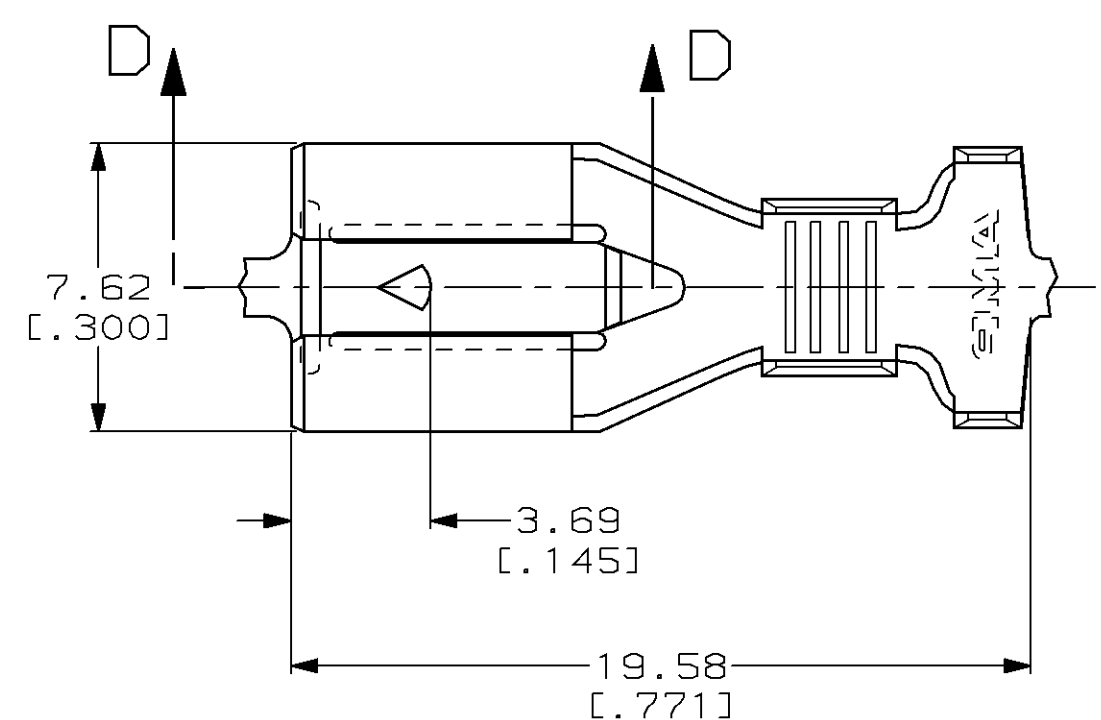


LOC	DIST	P	F	ZONE	LTR	REVISIONS	DATE	APPD
AF	50				B	REL PER 0G1A-0027-99	17FEB99	JR/EH

### SUGGESTED MATING TAB



- 1 - MATL: 1/2H BRASS OR NICKEL PL STEEL.
  - 2 - NO BURRS PERMISSIBLE AT HOLE.
  - 3 - MUST BE FLAT WITHIN 0.076 [.003] OVER THIS LENGTH.
  - 4 - TIN PLATING IS REQUIRED ON BRASS WHEN TERMINAL TEMP. IS OVER 225°F.
  - 5 - HOLE MUST BE SYMMETRICAL ABOUT TAB Q WITHIN 0.076 [.003]
- \* TO BE USED ONLY WHEN SHOULDER IS ELIMINATED.



DO NOT SCALE PRINT. UNLESS SPECIFIED DIMENSIONS IN mm [INCHES] TOLERANCES ON:		DR 6/19/98 JR RUTH		TIN 0.002032 [.000080] MIN		1217095-2	
2 PLC DEC ± 0.25 [.010]		CHK 6/19/98 MS FEHER		-		1217095-1	
3 PLC DEC ± -		APPD 6/19/98 J GILLESPIE		FINISH		PART NO	
ANGLES ± -		APPD 6/19/98 D BRATINA		AMP Incorporated Harrisburg, PA 17105-3608			
MATERIAL		PRODUCT SPEC					
H06 BRASS		APPLICATION SPEC		NAME RECEPTACLE, POSITIVE LOCK, 6.35 [.250] SERIES			
FINISH		114-2061					
SEE TABLE		WEIGHT -		SIZE	CAGE CODE	DRAWING NO	
				C	00779	G=1217095	
				SCALE	5:1	SHEET	1 OF 1

THIS DRAWING IS A CONTROLLED DOCUMENT FOR AMP INCORPORATED. IT IS SUBJECT TO CHANGE AND THE CONTROLLING ENGINEERING ORGANIZATION SHOULD BE CONTACTED FOR THE LATEST REVISION.