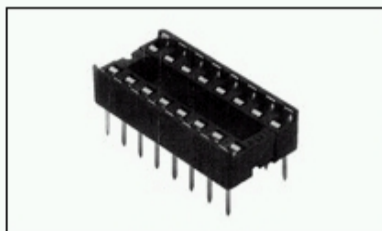
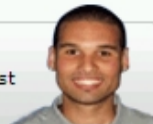


1-390263-2 Product Details

Have a Question?

Chat with a Product Information Specialist



1-390263-2

TE Internal Number: 1-390263-2

Active

[View 3D PDF](#)

DIP Sockets

[Always EU RoHS/ELV Compliant \(Statement of Compliance\)](#)

Product Highlights:

- Socket Style = Standard
- Through Hole Contact Termination Type
- 2.54 mm Centerline
- Row-to-Row Spacing = 15.24 mm
- 32 Positions

[View all Features](#)

Quick Links

- ▶ [Check Pricing & Availability](#)
- ▶ [Search for Tooling](#)
- ▶ [Product Feature Selector](#)
- ▶ [Contact Us About This Product](#)

[Add to My Part List](#) [Request Sample](#) [Find Similar Products](#) [Buy Product](#)

Documentation & Additional Information

Product Drawings:

- [DIP SOCKET, 15.24 CENTERLINE OTC STYLE \(PDF, English\)](#)

Catalog Pages/Data Sheets:

- None Available

Product Specifications:

- None Available

Application Specifications:

- None Available

Instruction Sheets:

- None Available

CAD Files: ([CAD Format & Compression Information](#))

- [2D Drawing \(DXF, Version N\)](#)
- [3D Model \(IGES, Version N\)](#)
- [3D Model \(STEP, Version N\)](#)

Additional Information:

- [Product Line Information](#)

Related Products:

- [Tooling](#)

[List all Documents](#)

Product Features (Please use the Product Drawing for all design activity)

Product Type Features:

- [Socket Style](#) = Standard
- [Profile](#) = Over-The-Component
- [Frame Style](#) = Open
- [Leg Style](#) = Straight
- [Color](#) = Black

Electrical Characteristics:

- [Insulation Resistance \(MΩ\)](#) = 10,000
- [Contact Resistance \(mΩ\)](#) = 30

Termination Related Features:

- [Termination Post Length \(mm \[in\]\)](#) = 3.00 [0.118]

Body Related Features:

- [Centerline \(mm \[in\]\)](#) = 2.54 [0.100]
- [Row-to-Row Spacing \(mm \[in\]\)](#) = 15.24 [0.600]
- [Number of Positions](#) = 32
- [Mount Style](#) = Vertical

Contact Related Features:

- [Contact Termination Type](#) = Through Hole
- [Contact Base Material](#) = Phosphor Bronze
- [Contact Plating, Mating Area, Material](#) = Tin
- [Contact Style](#) = Stamped + Formed
- [Mating Contact Type](#) = Dual Leaf

Housing Related Features:

- [Housing Material](#) = Thermoplastic - GF

Configuration Related Features:

- [Height Above PC Board \(mm \[in\]\)](#) = 5.10 [0.200]

Industry Standards:

- [RoHS/ELV Compliance](#) = RoHS compliant, ELV compliant
- [Lead Free Solder Processes](#) = Wave solder capable to 240°C, Wave solder capable to 260°C, Wave solder capable to 265°C
- [RoHS/ELV Compliance History](#) = Always was RoHS compliant

Conditions for Usage:

- [Temperature Range \(°C\)](#) = -40 - +105

Packaging Related Features:

- [Packaging Method](#) = Tube

Other:

- [Brand](#) = AMP

BOOKMARK

Corporate Information

[Who We Are](#)
[Investors](#)
[News Room](#)
[Supplier Portal](#)
[Careers](#)

Quick Links

[Check Distributor Inventory](#)
[Cross Reference](#)
[Find Documents & Drawings](#)
[Product Compliance Support Center](#)
[Site Map](#)

Customer Support

[Email or Chat with Us](#)
[Find a Phone Number](#)
[Search Knowledge Base](#)
[Manage Your Account](#)

Sign up for our eNewsletter

Enter your email address

Follow us on: