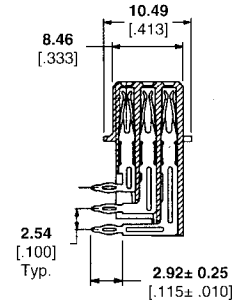
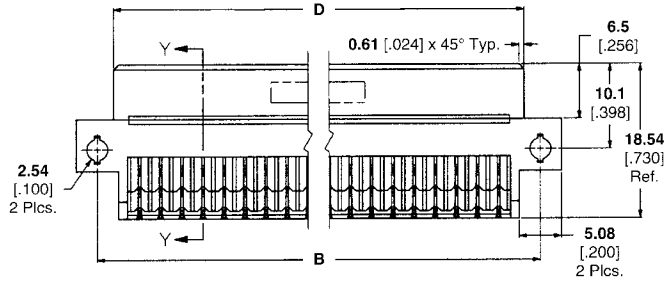
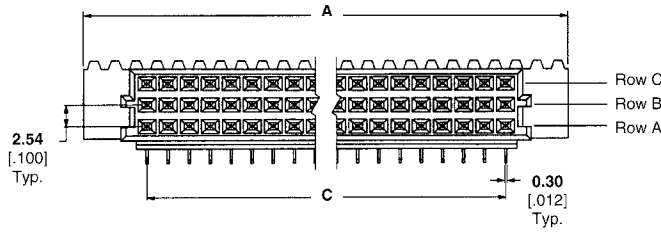
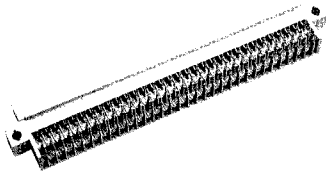


Type R Receptacle with Eye of Needle Compliant Pin



Section Y - Y

Material

Housing — Glass filled polymer
Contacts — Copper alloy

Related Product Data

- DIN Performance Levels** — Page 7
- Performance Specifications** — Page 8
- Mateable Connectors** — Pages 17-19, 28, 52-54
- PC Board Hole Layout** — Page 58
- Technical Documents** — Page 74
- DIN Specification 41612
- IEC Specification 60603-2
- Application Specification 114-9014
- Instruction Sheet 408-6784

Standard Size

Number of Positions	Rows Loaded	Dimensions				DIN Level	Part Number
		A	B	C	D		
96	A,B,C	93.88 3.696	88.90 3.500	78.74 3.100	85.00 3.346	II	148292-5
	A,B	93.88	88.90	78.74	85.00		
64	A,C	3.696	3.500	3.100	3.346	II	148296-1

Expanded Size

Number of Positions	Rows Loaded	Dimensions				DIN Level	Part Number
		A	B	C	D		
120	A,B,C	114.20 4.496	109.22 4.300	99.06 3.900	105.31 4.146	II	148360-5
150	A,B,C	139.60 5.496	134.62 5.300	124.46 4.900	130.71 5.146	II	148295-5

Connectors on this page are toolless (flat rock).

Type R Assemblies