

1650156-2 Product Details



1650156-2

TE Internal Number: 1650156-2



Active

701-15-02109=CONTACT,PIN,#12

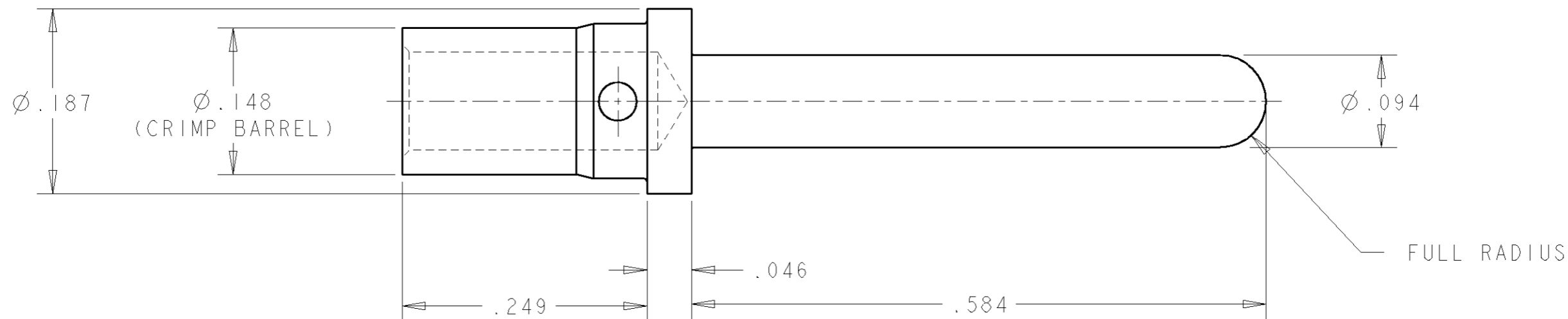


Always EU RoHS/ELV Compliant (Statement of Compliance)

Documentation & Additional Information	
<p>Product Drawings:</p> <ul style="list-style-type: none"> CONTACT, PIN SIZE #12, CRIMP, PREMATE, .46 PIN EXT. (PDF, English) <p>Catalog Pages/Data Sheets:</p> <ul style="list-style-type: none"> POWER_CONNECTORS_CATALOG_SEC02_CABLE_MOUNTED (PDF, English) AMP & ELCON Power Connector Layout Forms Datasheet 6... (PDF, English) <p>Product Specifications:</p> <ul style="list-style-type: none"> None Available <p>Application Specifications:</p> <ul style="list-style-type: none"> ELCON Drawer Series Connectors (PDF, English) <p>Instruction Sheets:</p> <ul style="list-style-type: none"> None Available <p>CAD Files: (CAD Format & Compression Information)</p> <ul style="list-style-type: none"> 2D Drawing (DXF, Version D) 3D Model (IGES, Version D) 3D Model (STEP, Version D) <p style="text-align: right;">List all Documents</p>	<p>Related Products:</p> <ul style="list-style-type: none"> Tooling

THIS DRAWING IS UNPUBLISHED. RELEASED FOR PUBLICATION 20
 © COPYRIGHT 20 BY TYCO ELECTRONICS CORPORATION. ALL RIGHTS RESERVED.

LOC	DIST	REVISIONS			
P	LTR	DESCRIPTION	DATE	DWN	APVD
GP	00				
		C	REVISED PER ECO-07-008620	11APR2007	GIP DO
		D	REV PER ECO-07-014869	25JUN2007	RG DO



1. PART NUMBER CHANGES AND/OR DESIGN CHANGES AFFECTING ITEM INTERCHANGEABILITY REQUIRE PRIOR TYCO ELECTRONICS APPROVAL AND AUTHORIZATION BY REVISION TO THIS DRAWING.

2. ITEMS PROVIDED TO THIS SPECIFICATION SHALL BE IDENTIFIED ON THE CONTAINER WITH THE FOLLOWING INFORMATION:

TYCO ELECTRONICS P/N DATE CODE (e.g. 0106)
 XXXXXXXX-X YEAR WEEK
 XXXX

- 3 MATERIAL: COPPER ALLOY
- 4 FINISH: GOLD PLATED, .000010 MIN THICK OVER NICKEL PLATED, .000050 MIN THICK.
- 5 FINISH: GOLD PLATED, .000030 MIN THICK OVER NICKEL PLATED, .000050 MIN THICK.

6. FOR TERMINATION, USE THE FOLLOWING EQUIPMENT:
 SHOWN FOR REFERENCE ONLY (USER SPECIFIED)
 CRIMP TOOL: M22520/1-01
 TURRET HEAD/LOCATER: M22520/1-02

5	1650156-5
4	1650156-2
DESCRIPTION	PART NUMBER

THIS DRAWING IS A CONTROLLED DOCUMENT FOR TYCO ELECTRONICS CORPORATION IT IS SUBJECT TO CHANGE AND THE CONTROLLING ENGINEERING ORGANIZATION SHOULD BE CONTACTED FOR THE LATEST REVISION.		DWN G.PETERS 11APR2007	Tyco Electronics Harrisburg, PA 17105-3608													
DIMENSIONS: INCHES		CHK D.ORRIS 11APR2007	NAME CONTACT, PIN SIZE #12, CRIMP, PREMATE, .46 PIN EXT.													
TOLERANCES UNLESS OTHERWISE SPECIFIED:		APVD S.FLICKINGER 11APR2007														
<table border="0"> <tr><td>0 PLC</td><td>±</td></tr> <tr><td>1 PLC</td><td>±</td></tr> <tr><td>2 PLC</td><td>±</td></tr> <tr><td>3 PLC</td><td>±</td></tr> <tr><td>4 PLC</td><td>±</td></tr> <tr><td>ANGLES</td><td>±</td></tr> </table>		0 PLC	±	1 PLC	±	2 PLC	±	3 PLC	±	4 PLC	±	ANGLES	±	PRODUCT SPEC -	SIZE A3	CAGE CODE 00779
0 PLC	±															
1 PLC	±															
2 PLC	±															
3 PLC	±															
4 PLC	±															
ANGLES	±															
MATERIAL 3	FINISH 4 5	APPLICATION SPEC -	DRAWING NO C-1650156	RESTRICTED TO -												
CUSTOMER DRAWING			SCALE	SHEET OF REV D												