

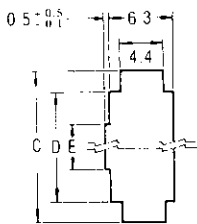
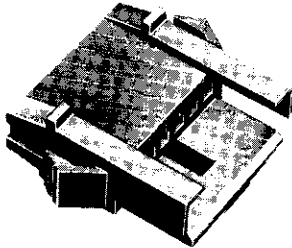
Wire to Board Connectors

Economy Interconnection (EI) Series Connectors

Cap Housings For Panel Mount

Material :

94V-0 rated, 66 Nylon
See chart for color

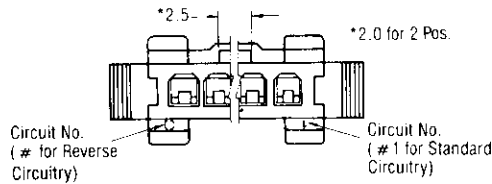
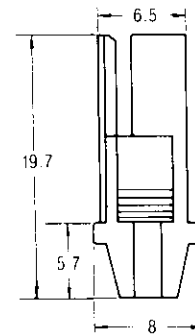
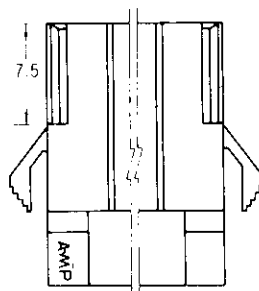
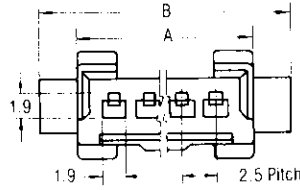


Panel Cutout

(Applicable panel thickness : 0.8~1.6mm)
Insert housing from panel cutout side.

Panel Mount Dimensions

| No. of Pos. | Dimensions | | | |
|-------------|------------|------|-----|-----|
| | C | D | E | |
| 2 | 12.0 | 8.2 | 3.7 | |
| 3 | 14.5 | 10.7 | | |
| 4 | 17.0 | 13.2 | | |
| 5 | 19.5 | 15.7 | | 4.2 |
| 6 | 22.0 | 18.2 | | |
| 7 | 24.5 | 20.7 | | |
| 8 | 27.0 | 23.2 | | |



| No. of Pos. | Dimensions | | Part No. of Cap Housing | | | | | |
|-------------|------------|------|-------------------------|------------|------------|-----------------------|------------|------------|
| | A | B | For Standard Circuitry | | | For Reverse Circuitry | | |
| | | | Natural | Black | Blue | Natural | Black | Blue |
| 2 | 7.9 | 13.5 | 172213-2 | 2-172213-2 | 4-172213-2 | 172214-2 | 2-172214-2 | 4-172214-2 |
| 3 | 10.4 | 16.0 | 172213-3 | 2-172213-3 | 4-172213-3 | 172214-3 | 2-172214-3 | 4-172214-3 |
| 4 | 12.9 | 18.5 | 172213-4 | 2-172213-4 | 4-172213-4 | 172214-4 | 2-172214-4 | 4-172214-4 |
| 5 | 15.4 | 21.0 | 172213-5 | 2-172213-5 | 4-172213-5 | 172214-5 | 2-172214-5 | 4-172214-5 |
| 6 | 17.9 | 23.5 | 172213-6 | 2-172213-6 | 4-172213-6 | 172214-6 | 2-172214-6 | 4-172214-6 |
| 7 | 20.4 | 26.0 | 172213-7 | 2-172213-7 | — | — | — | — |
| 8 | 22.9 | 28.5 | 172213-8 | — | — | — | — | — |

Note : Cap housing for standard circuitry P/N 172213 mates with receptacle housing for standard circuitry P/N 171822
Cap housing for reverse circuitry P/N 172214 mates with receptacle housing for reverse circuitry P/N 171880