

AMPLIMITE Subminiature D Type Connectors (Continued)

HDP-20 Ferrules for Shielding Hardware Kits

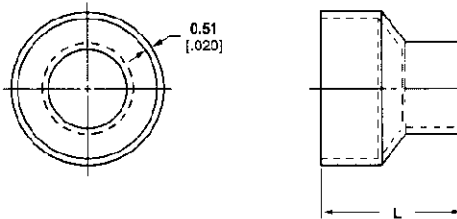
Ferrules for Shielding Hardware Kits



Stepped



Straight



Material and Finish:

Steel (annealed), tin plated

Technical Documents:

Instruction Sheets —

- 408-9507
- 408-9508
- 408-9243
- 408-9242

Related Product Data:

Shielding Hardware and Enclosure Kit —
pages 540, 541

Shell Sizes	Style	L Dim.	Cable Diameter	Part Numbers	
				Ferrule	Die Sets*
1-3	Stepped	11.18 .440	4.19-4.83 .165-.190	747579-8	543424-3
1-3	Stepped	11.18 .440	4.83-5.51 .190-.217	747579-8	543424-2
1-3	Stepped	11.18 .440	5.51-6.25 .217-.246	747579-8	543424-8
1-3	Stepped	11.18 .440	6.25-7.21 .246-.284	1-747579-0	543424-1
1-3	Stepped	11.18 .440	7.21-8.23 .284-.324	1-747579-0	543424-7
1-3	Stepped	11.18 .440	8.23-9.53 .324-.375	1-747579-1	543424-6
1-3	Straight	11.18 .440	9.53-11.10 .375-.437	1-747579-2	543424-5
1-3	Straight	11.18 .440	10.16-11.56 .400-.460	1-747579-4	543424-4
4-5	Stepped	15.88 .625	5.84-6.73 .230-.265	1-747580-0	543425-2
4-5	Stepped	15.88 .625	8.59-9.78 .338-.385	747580-8	543425-1
4-5	Stepped	15.88 .625	9.53-10.97 .375-.432	747580-4	58238-1
4-5	Stepped	15.88 .625	10.72-12.45 .422-.490	747580-5	58237-2
4-5	Straight	15.88 .625	12.19-14.28 .480-.562	747580-6	58237-1

*Die sets used with Hand Crimping Tool Part No. 543344-1 or Pneumatic Bench Tool Part No. 312522-3 equipped with Die Set Holder Part No. 58449-1.