

Post Header for Printed Circuit Board

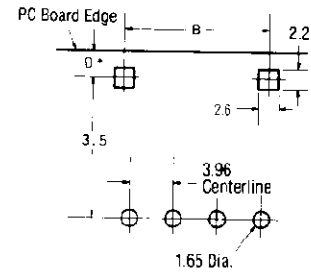
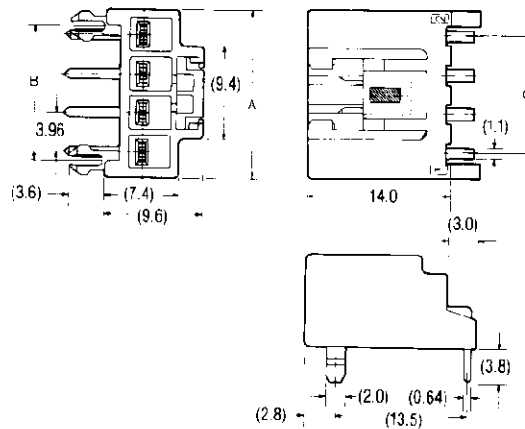
Horizontal Mount Type Solder Mounting Type (With Retention Leg) (Cont'd)

Material & Finish:
Housing—UL 94V-0 rated,
glass-filled, 6/6 Nylon
Contact—brass, tin-lead
plated

Housing Color for suffix
-1 = Natural
-2 = Red
-4 = Yellow
-6 = Blue
-9 = Black

Dimension of Contact Post:
0.64 x 1.1

3 Circuits (7.92mm Centerline) 4, 5 and 6 Circuits (3.96mm Centerline)



PC Board Layout PC Board thickness: 1.6mm

*When punching a hole in the board, every caution must be taken in setting Dimension D so that no crack is developed in the board.

No. of Circuit	Centerline	Dimensions			Part No. of Post Headers	Part No. of Mating Housing
		A	B	C		
4	3.96	16.98	13.58	11.88	178497 -□	178481
3*	7.92	20.94	17.54	15.84	3-178498 -□*	178482
5	3.96	20.94	17.54	15.84	178498 -□	178482
6	3.96	24.90	21.50	19.80	178499 -□	178483

*3-circuit connector (7.92mm centerline) comprises 5-circuit connector with No. 2 and No. 4 contacts extracted

Note: For the print circuit board layout for 3, 5 and 6-circuit connectors, consult our Sales Department.

Horizontal Mount Type SMT Type (With Retention Leg) 2 Circuits (7.92 Centerline)

Part No.: 178601-□

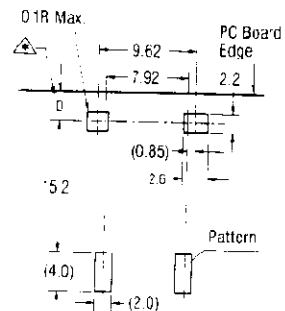
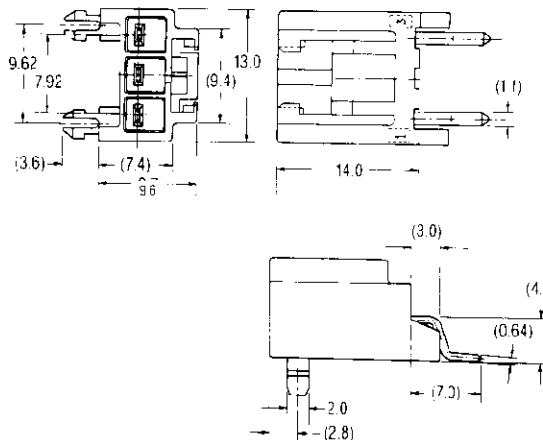
Material & Finish:
Housing—UL 94V-0 rated,
glass-filled, 6/6 Nylon
Contact—brass, tin-lead
plated

Housing Color for suffix
-1 = Natural
-2 = Red
-4 = Yellow
-6 = Blue
-9 = Black

Dimension of Contact Post:
0.64 x 1.1

Part No. of Mating Housing:
178125-□

2 Circuits (7.92 Centerline)



PC Board Layout PC Board thickness: 1.6mm

*When punching a hole in the board, every caution must be taken in setting Dimension D so that no crack is developed in the board.

Note: Circuit #2 is not loaded in 3 position housing.
This product can be soldered by soldering iron only.