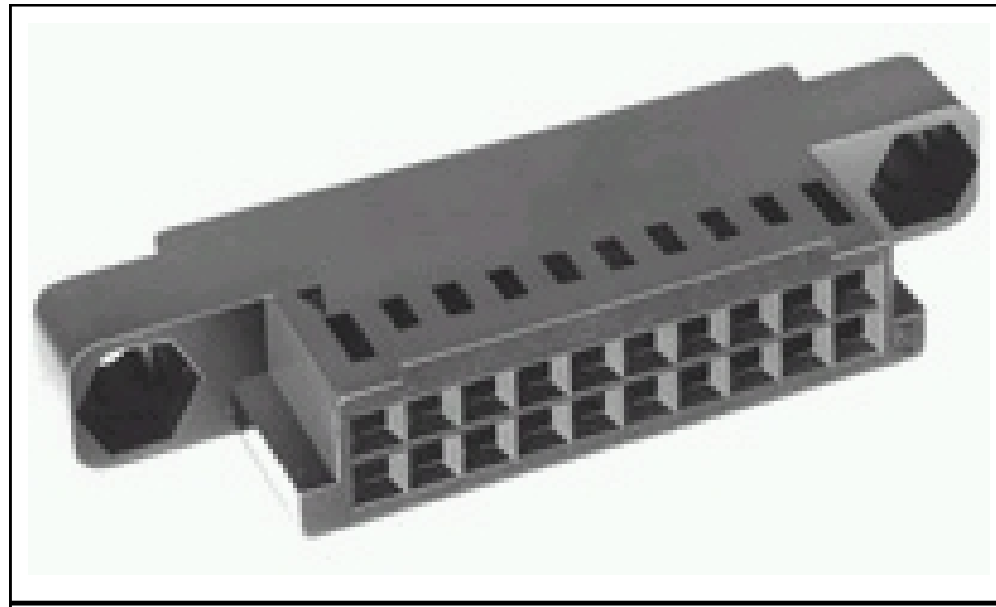


1-88637 -4 Product Details

Live Product Chat US Only
 8:30am - 5pm ET, Mon - Fri



1-88637 -4

[Active](#)

Flexible Film Connectors

[Always EU RoHS/ELV Compliant](#) ([Statement of Compliance](#))

Product Highlights:

- ? Housing
- ? 2.54 mm Centerline
- ? Connector Type = Standard
- ? Number of Positions = 24
- ? Number of Rows = Dual

[View all Features](#) |
 [Find Similar Products](#)

Quick Links

- [Check Pricing & Availability](#)
- [Search for Tooling](#)
- [View Contacts \(59\)](#)
- [Product Feature Selector](#)
- [Contact Us About This Product](#)

Documentation & Additional Information

Product Drawings:

- ? [HOUSING,RCPT,DBL ROW / W DETENTS,.100@22,FFC](#) (PDF, English)

Catalog Pages/Data Sheets:

- ? None Available

Product Specifications:

- ? None Available

Application Specifications:

- ? None Available

Instruction Sheets:

- ? None Available

CAD Files: ([CAD Format & Compression Information](#))

- ? [2D Drawing](#) (DXF, Version AE)
- ? [3D Model](#) (IGES, Version AE)
- ? [3D Model](#) (STEP, Version AE)

[List all Documents](#)

Additional Information:

- ? [Product Line Information](#)

Related Products:

- ? [Tooling](#)
- ? [Contacts \(59\)](#)

Product Features

(Please use the Product Drawing for all design activity)

Product Type Features:

- ? [Product Type](#) = Housing
- ? [Connector Type](#) = Standard
- ? [Number of Positions](#) = 24
- ? [Mating Type](#) = Receptacle
- ? [Mating Connector Lock](#) = With
- ? [Mating Connector Lock Type](#) = Detent
- ? [Mating Polarization](#) = With
- ? [Mounting Ears](#) = With
- ? Flame Retardant = Yes
- ? Color = Black
- ? Comment = Use Extraction Tool No. 91093 for round wire contacts.; Ink Stamped -1

Mechanical Attachment:

- ? [Panel Attachment](#) = With

Body Related Features:

- ? [Centerline \(mm \[in\]\)](#) = 2.54 [0.100]
- ? [Number of Rows](#) = Dual

Housing Related Features:

- ? Housing Material = Thermoplastic
- ? Housing Flammability Rating = UL 94V -0

Industry Standards:

- ? [RoHS/ELV Compliance](#) = RoHS compliant, ELV compliant
- ? [Lead Free Solder Processes](#) = Not relevant for lead free process
- ? RoHS/ELV Compliance History = Always was RoHS compliant

Conditions for Usage:

- ? [Terminate To](#) = FFC Cable

Other:

- ? Brand = AMP