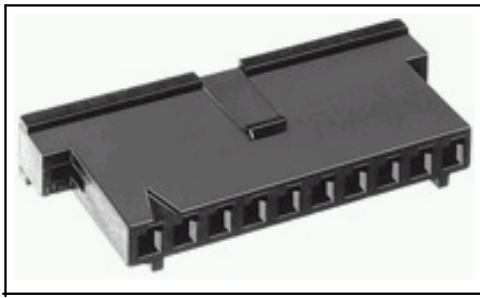


**Product Details for 1 -88859 -5**



**1 -88859 -5**

[Active](#)

**Flexible Film Connectors**

[RoHS Compliant \(Statement of Compliance\)](#)

**Product Highlights:**

- ? [Housing](#)
- ? [2.54 mm Centerline](#)
- ? [Connector Type = Standard](#)
- ? [Number of Positions = 16](#)
- ? [Number of Rows = Single](#)

[View all Features](#)

**Quick Links**

- [Check Pricing & Availability](#)
- [Search for Tooling](#)
- [View Mating Products \(2\)](#)
- [Product Feature Selector](#)
- [Contact Us About This Product](#)

**Documentation & Additional Information**

**Product Drawings:**

- ? [HOUSING, RECEPTACLE, FFC, .100@22, SINGLE ROW](#) (PDF, English)

**Catalog Pages/Data Sheets:**

- ? None Available

**Product Specifications:**

- ? None Available

**Application Specifications:**

- ? None Available

**Instruction Sheets:**

- ? None Available

**CAD Files:**

- ? None Available

**Additional Information:**

- ? [Product Line Information](#)

**Additional Product Images:**

- ? [Typical Application, to -Board](#)
- ? [Typical Application, to -Cable](#)

**Related Products:**

- ? [Tooling](#)
- ? [Mating Products \(2\)](#)

[List all Documents](#)

**Product Features** (Please use the Product Drawing for all design activity)

**Product Type Features:**

- ? [Product Type](#) = Housing
- ? [Connector Type](#) = Standard
- ? [Number of Positions](#) = 16
- ? [Mating Type](#) = Receptacle
- ? [Mating Connector Lock](#) = With
- ? [Mating Connector Lock Type](#) = Detent
- ? [Mating Polarization](#) = With
- ? [Mounting Ears](#) = Without
- ? Flame Retardant = Yes
- ? Color = Black
- ? Comment = Use Extraction Tool No. 91092 -1 for round wire contacts.

**Mechanical Attachment:**

- ? [Panel Attachment](#) = Without

**Body Related Features:**

- ? [Centerline \(mm \[in\]\)](#) = 2.54 [0.100]
- ? [Number of Rows](#) = Single

**Housing Related Features:**

- ? Housing Material = Thermoplastic
- ? Housing Flammability Rating = UL 94V -0

**Industry Standards:**

- ? [RoHS/ELV Compliance](#) = RoHS compliant, ELV compliant
- ? [Lead Free Solder Processes](#) = Not relevant for lead free process
- ? RoHS/ELV Compliance History = Always was RoHS compliant

**Conditions for Usage:**

- ? [Terminate To](#) = FFC Cable

**Other:**

- ? Brand = AMP