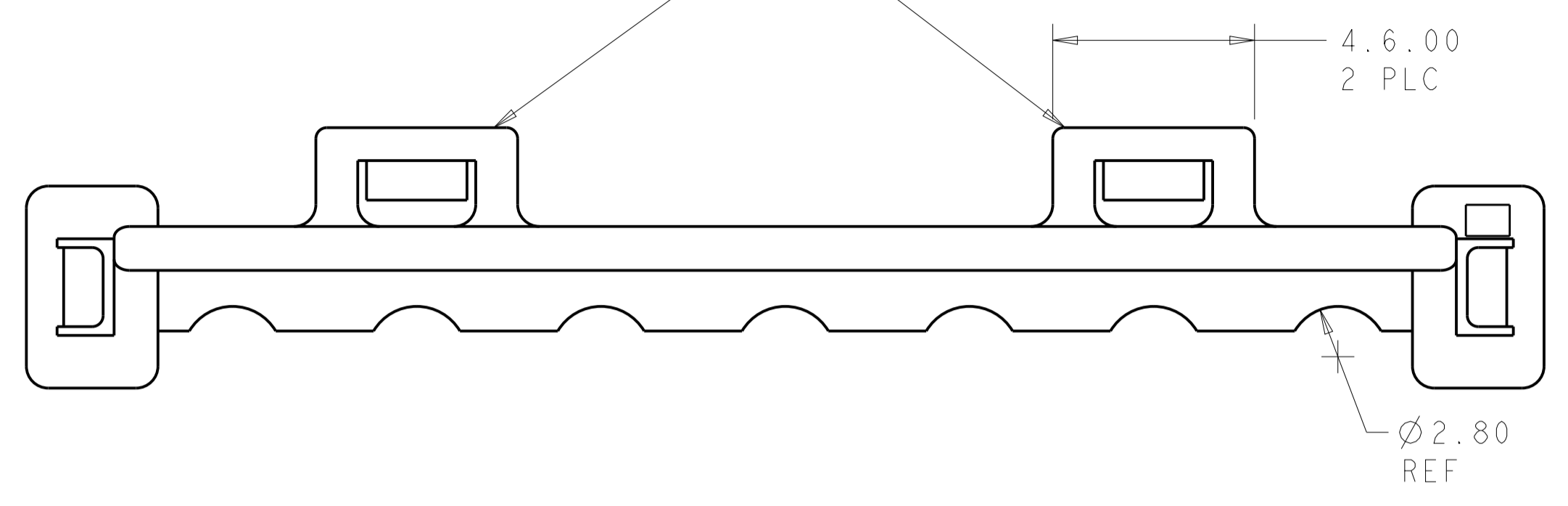
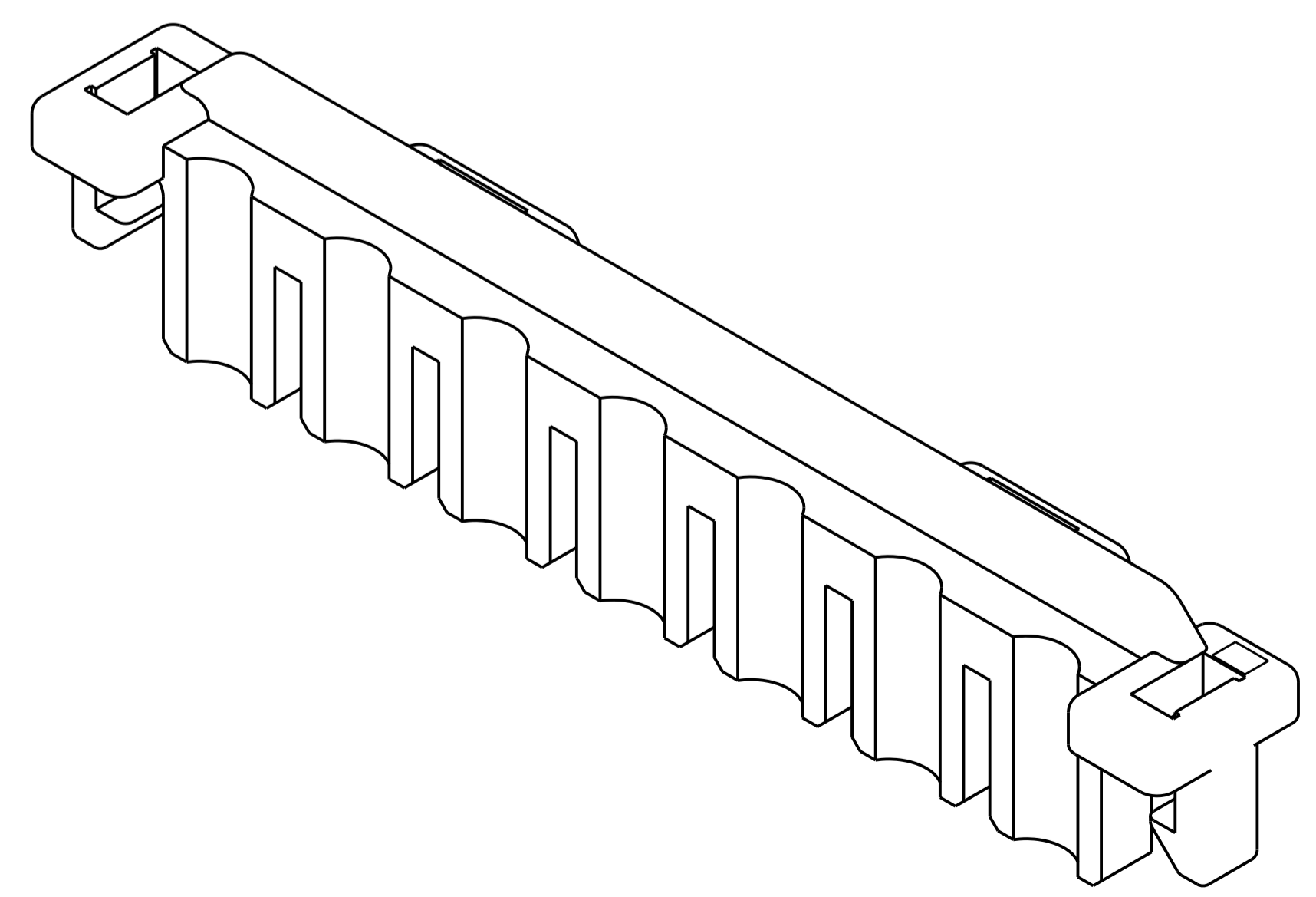
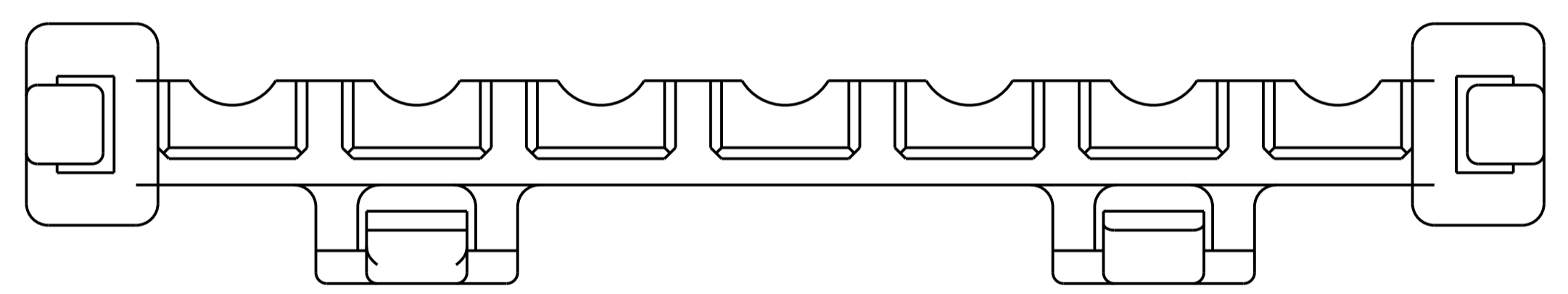
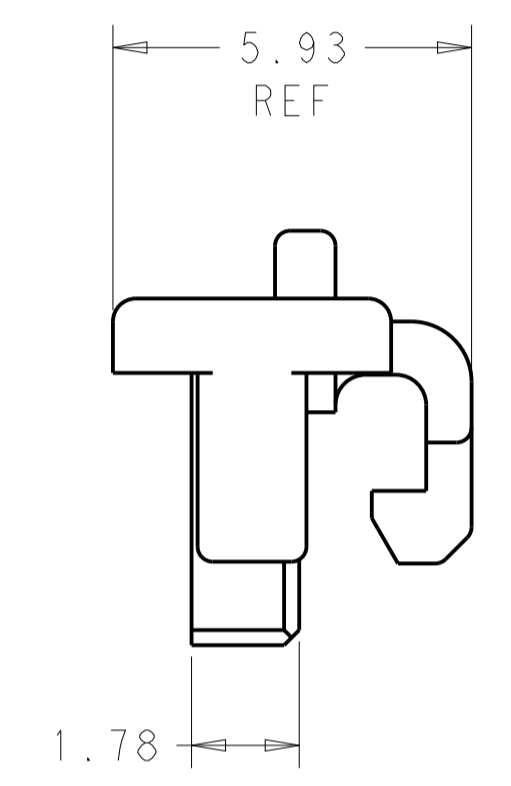
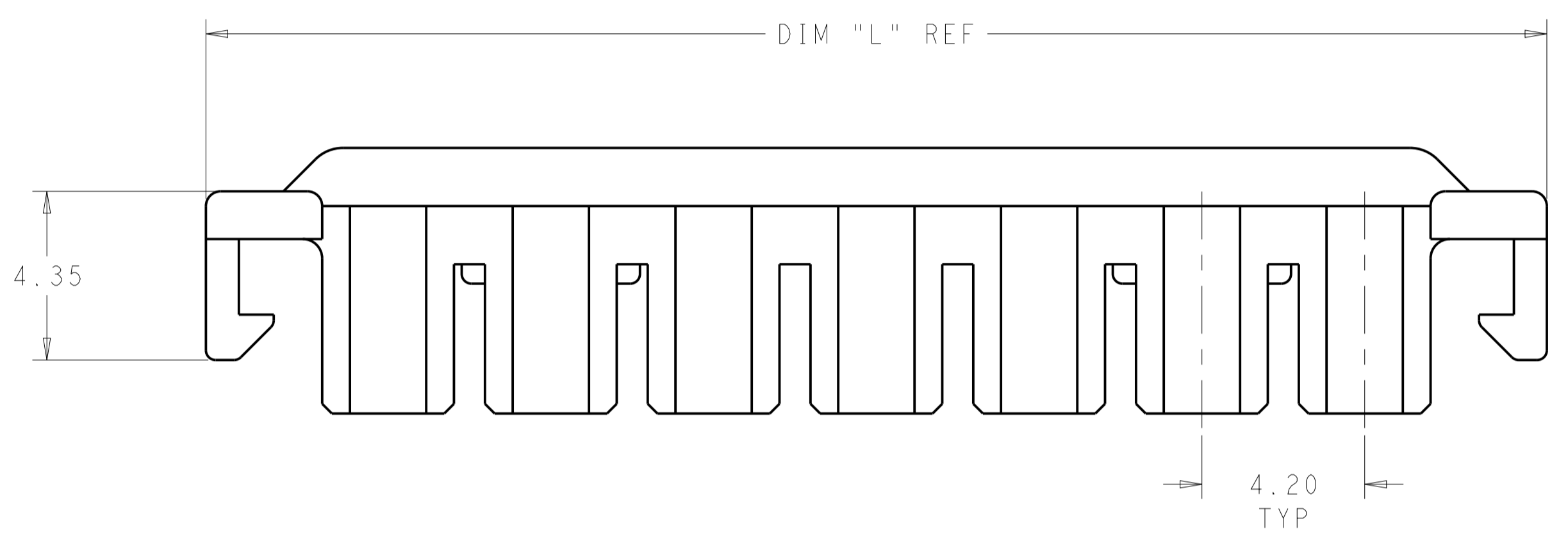
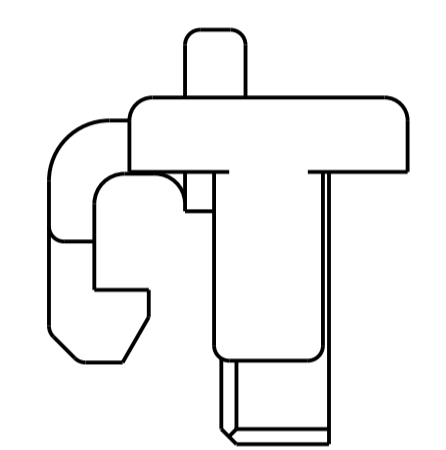


LOC		DIST		REVISIONS			
AF	-	P	LTH	DESCRIPTION	DATE	DWN	APVD
		A		RELEASED PER ECO-14-000788	21JAN14	JR	KR

TOP LATCHES NOT PRESENT FOR POSITIONS 1-5



- USE WITH VAL-U-LOK HOUSINGS.
 - FOR USE WITH #26-#22 AWG LEAD WIRE WITH INSULATION DIA 2.03-2.16MM AND INSULATION CRIMP HEIGHT OF 2.54 MIN.
- ⚠ SIDE LATCHES ONLY, NO TOP LATCHES FOR POSITIONS 1-5



1969608-7 SHOWN HERE

55.60	12	1-1969609-2
51.40	11	1-1969609-1
47.20	10	1-1969609-0
43.00	9	1969609-9
38.80	8	1969609-8
34.60	7	1969609-7
30.40	6	1969609-6
26.20	5	1969609-5 ⚠
22.00	4	1969609-4 ⚠
17.80	3	1969609-3 ⚠
13.60	2	1969609-2 ⚠
9.40	1	1969609-1 ⚠
DIM L	# OF POS	PART NO.

THIS DRAWING IS A CONTROLLED DOCUMENT. DWN: S. EDWARDS 08JAN2013
 CHK: KURT RANDOLH 08JAN13
 APVD: KURT RANDOLH 08JAN13

STE TE Connectivity

NAME: HOUSING, TPA, VAL-U-LOK

MATERIAL: NYLON 6/6 FINISH: COLOR: BLACK

SIZE: A1 CAGE CODE: 100779 DRAWING NO: 1969609

SCALE: 8:1 SHEET 1 OF 1 REV A