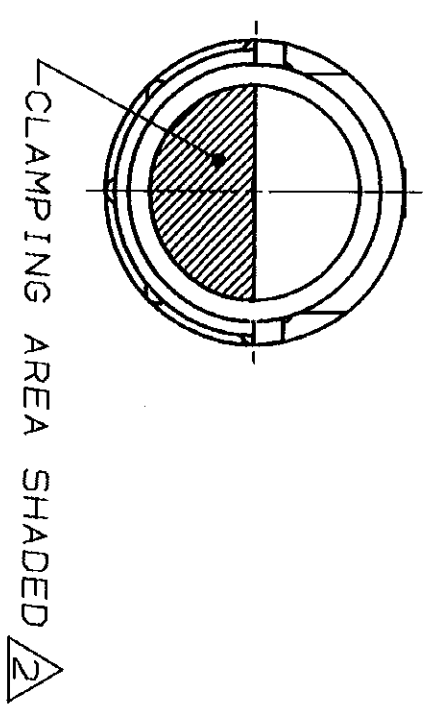
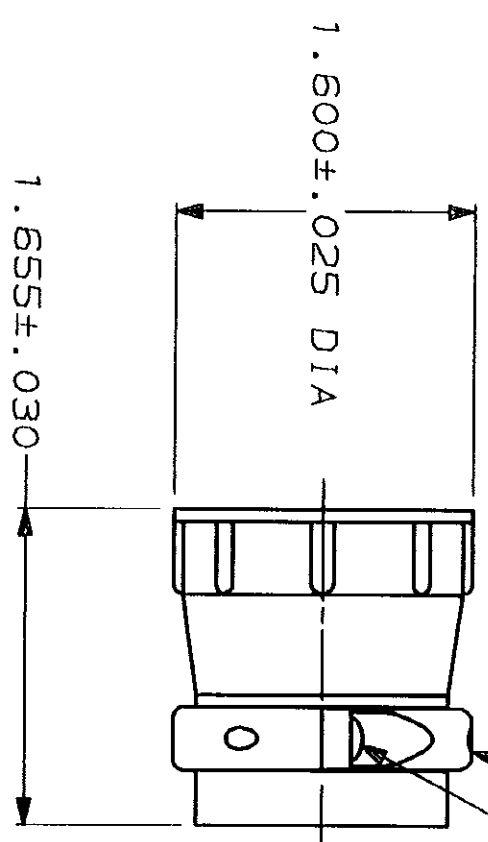


THIS DRAWING IS UNPUBLISHED. RELEASED FOR PUBLICATION BY AMP INCORPORATED. ALL INTERNATIONAL RIGHTS RESERVED. 19

MOD	LOC	DIST	P	F	ZONE	LTR	DESCRIPTION	DATE	APPD
4	BD	35				D	REDRAWN	4/29/91	-
						E	REV PER ECN BD6815	10/16/92	KB
						E1	ADDED -3 NPR 4832	07/06/93	AF



(2) #5-20 SELF-TAPPING SCREWS, SOLID OR SLOTTED SHANK. MATERIAL: ZINC PLATED STEEL LENGTH: .625

1. PARTS PACKAGED UNASSEMBLED.
2. CABLE CLAMPING AREA ADJUSTABLE FROM .261 TO .517 SQ IN BY CHANGING CLAMPING INSERT.
3. 1.125 MAXIMUM CABLE OUTSIDE DIAMETER.
4. BULK PACKAGED KITS TO BE ORDERED IN MULTIPLES OF 75 ONLY.

SMALL PACK	206512-3	PART NUMBER
4 BULK	206512-2	
INDIVIDUAL	206512-1	
PACKAGING		

DO NOT SCALE PRINT. UNLESS SPECIFIED DIMENSIONS IN INCHES		DR	4/29/91	A. GRAFF
1. PLC DEC # -		CHK	7-23-92	M. G. LEWIS
2. PLC DEC # -		APPD	7-23-92	K. BEAVER
3. ANGLE # -		APPD	7-23-92	G. ROWE
MATERIAL		PRODUCT SPEC	108-10024	
THERMOPLASTIC, BLACK		APPLICATION SPEC		
FINISH		WEIGHT		
		SCALE	1:1	SHEET 1 OF 1

AMP AMP Incorporated
Harrisburg, PA 17105-3608

CABLE CLAMP KIT, LARGE, SHELL SIZE 23, CPC

SIZE **B** CASE CODE 00779 DRAWING NO 206512