

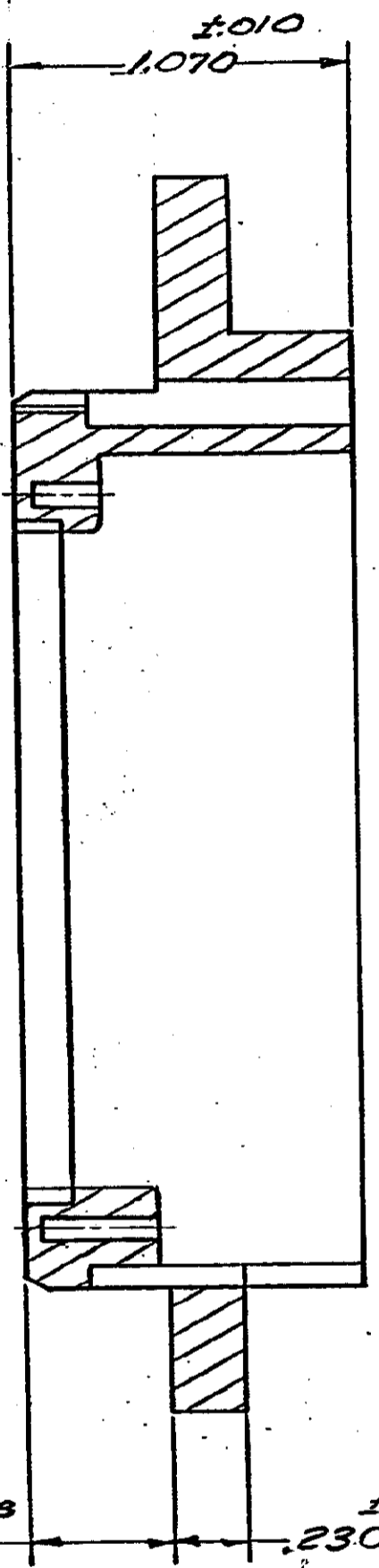
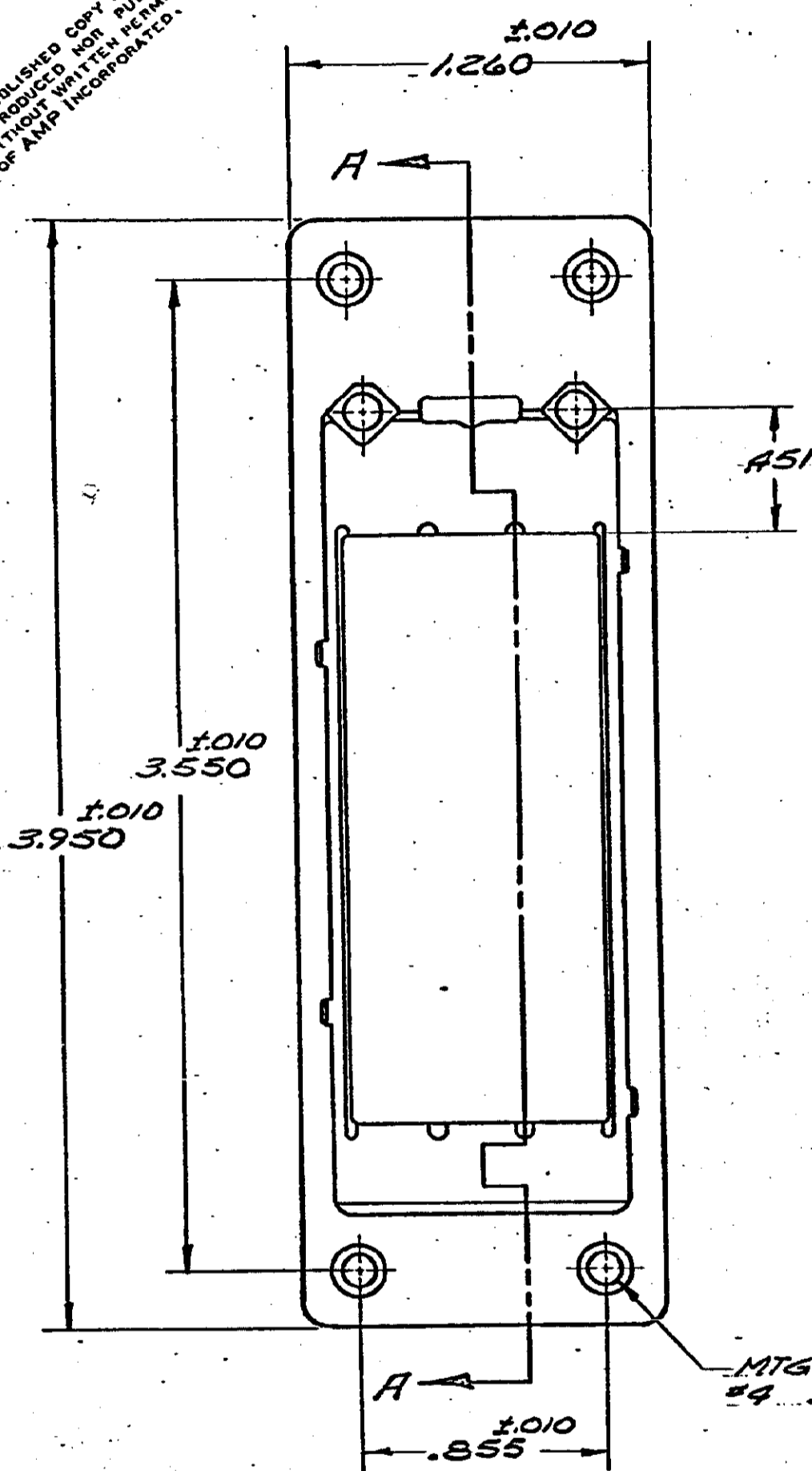
DRAWING MADE IN THIRD ANGLE PROJECTION

© COPYRIGHT 1973 BY AMP INCORPORATED, HARRISBURG, PA.
ALL INTERNATIONAL RIGHTS RESERVED. AMP INCORPORATED PRODUCTS
COVERED BY U. S. AND FOREIGN PATENTS AND/OR PATENTS PENDING.

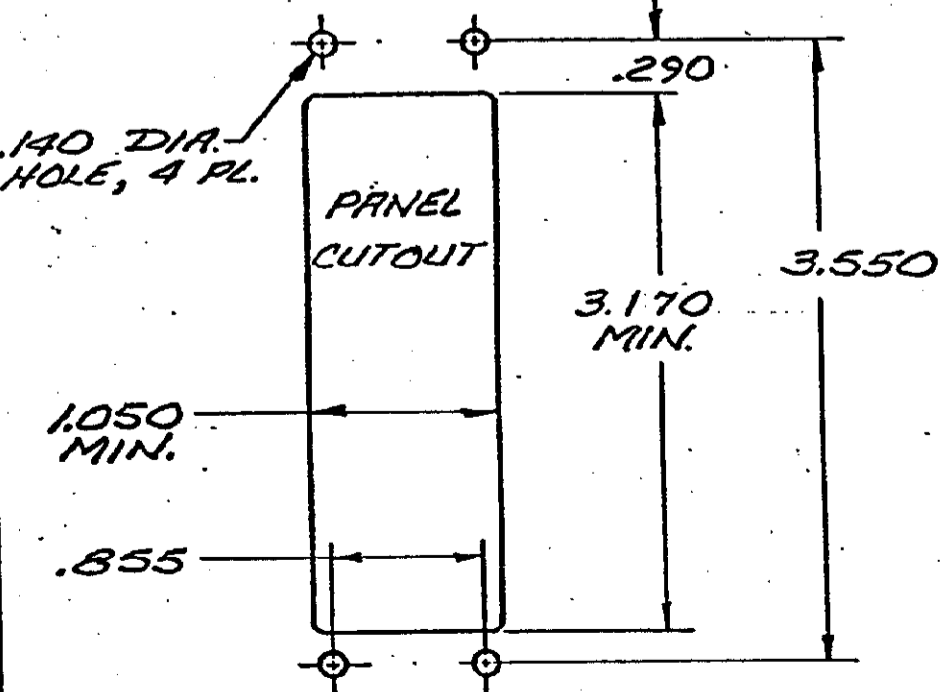
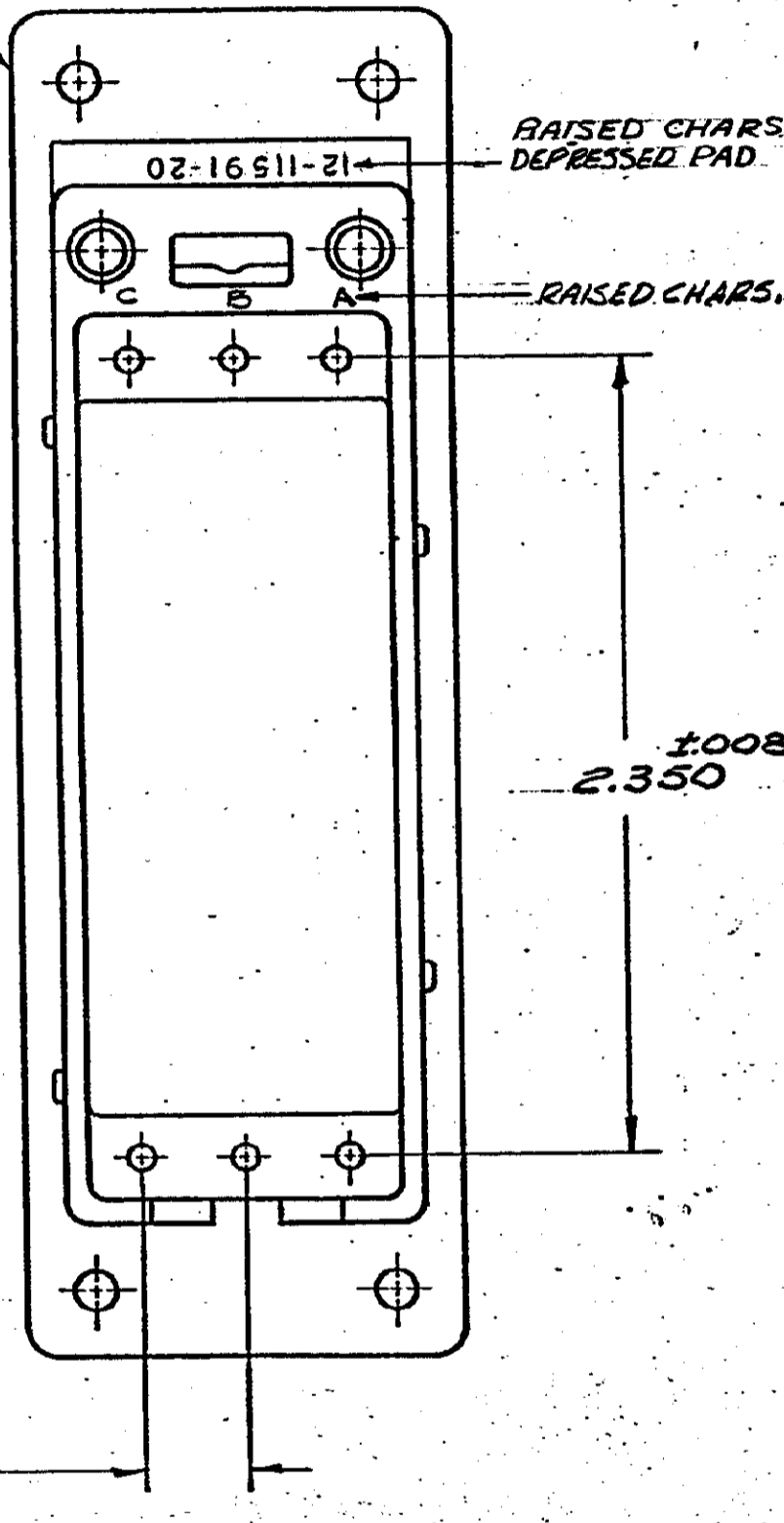
206539-1 1. AS SHOWN

REVISIONS					
F	ZONE	LTR	DESCRIPTION	DATE	APPROVED
D			REV PER ECO 18-009653	CT	8-18 DM

UNPUBLISHED COPY NOT TO BE
REPRODUCED NOR PUBLISHED
WITHOUT WRITTEN PERMISSION
OF AMP INCORPORATED.



RECEPTACLE HOUSING
MTRL. - GLASS REINFORCED NYLON



MTG. HOLES FOR
#4 SCREWS

UNLESS OTHERWISE SPECIFIED DIMENSIONS ARE IN INCHES. TOLERANCES ON: DECIMALS ±.005 ANGLES ±.1°	CONTRACT NO	AMP INCORPORATED Harrisburg, Pa.	
	DR. <i>J. D. Dwyer</i> 12-6-73		
	MATERIAL	CHK. <i>J. H. Dwyer</i> 12-7-73	NAME RECEPTACLE HOUSING, ZERO ENTRY, SIZE I (3,40 POS. MODULES) SPECIAL VERSION
	SEE CALLOUT	APPD. <i>J. H. Dwyer</i> 12-7-73	SIZE CODE IDENT NO DRAWING NO C 00779 206539
FINISH	DSGN APPD	SCALE 2:1	REV D
	OTHER APPD	SHEET 1 OF 1	

CUSTOMER DRAWING

206539 CUST. DR. 202