

Distributed by:

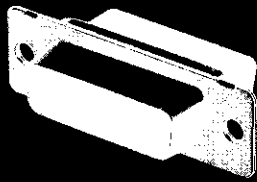
JAMECO[®]
ELECTRONICS

www.Jameco.com ♦ 1-800-831-4242

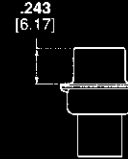
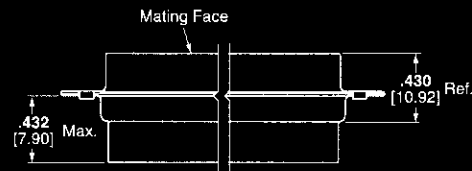
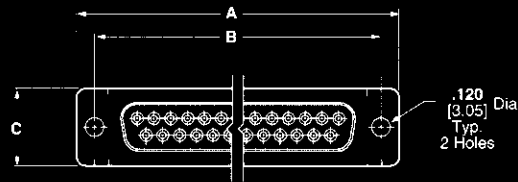
The content and copyrights of the attached
material are the property of its owner.

Jameco Part Number 919252

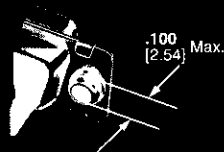
HDP-20 Crimp Snap-In Contact Connectors (Continued)



Receptacle



Cable Connectors



Clinch Nut
(Plug and Receptacle)

Shell Size	No. of Contact Positions	Dimensions			Insert Material	Mounting Method	Plug Part Numbers			Receptacle Part Nos.	
		A	B	C			Tin Plated Shell			Zinc Plated Shell	Tin Plated Shell
							Zinc Plated Shell	Without Grounding Indents	With Grounding Indents		
1	9	1.213	.984	.494	94V-0	Standard	205204-1	205204-3	205204-4	205203-1	205203-3
		30.81	24.99	12.55		Clinch Nut	—	745906-1	745906-2	—	745907-1
2	15	1.541	1.312	.494	94V-0	Standard	205206-1	205206-2	205206-3	205205-1	205205-2
		39.14	33.33	12.55		Clinch Nut	—	—	745908-2	—	745909-1
3	25	2.088	1.852	.494	94V-0	Standard	205208-1	207464-1	207464-2	205207-1	207463-1
		53.04	47.04	12.55		Clinch Nut	—	—	745036-2	207516-1	207516-3
4	37	2.729	2.500	.494	94V-0	Standard	205210-1	205210-2	205210-3	205209-1	205209-2
		69.32	63.50	12.55		Clinch Nut	—	—	745135-2	—	207661-3
5	50	2.635	2.406	.605	94V-0	Standard	205212-1	205212-2	205212-3	205211-1	205211-2
		66.93	61.11	15.37		Clinch Nut	—	—	745883-2	—	745884-1

Note: Plugs accept size 20 DF pin contacts and receptacles accept size 20 DF socket contacts.

Note: Instruction Sheets for AMP Tooling are packaged with the tooling. For additional information call the Tooling Assistance Center: **1-800-722-1111**.