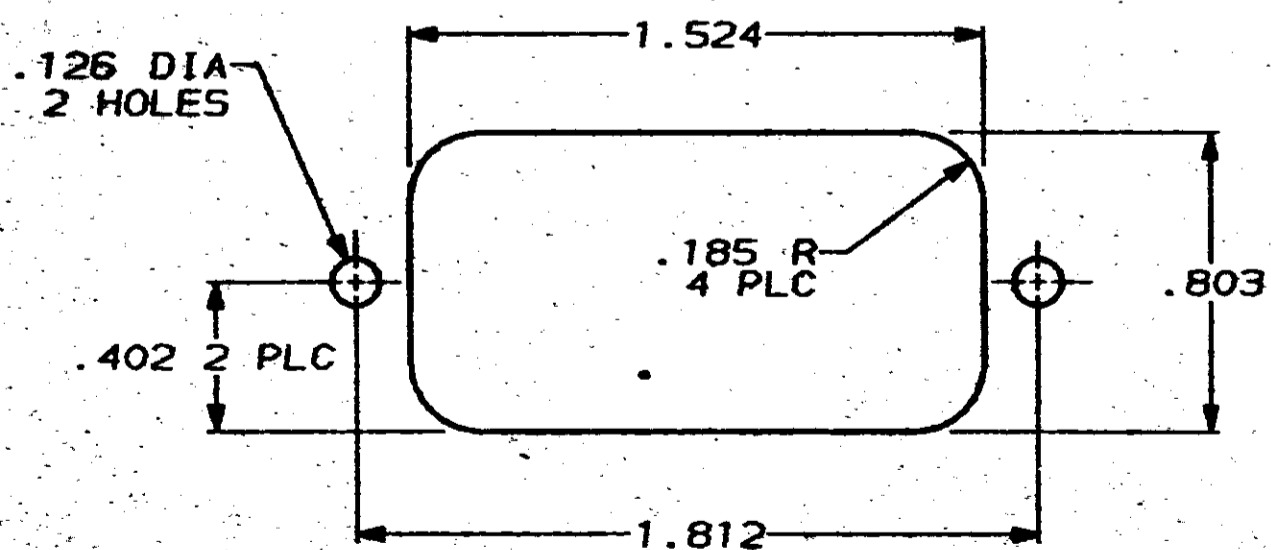
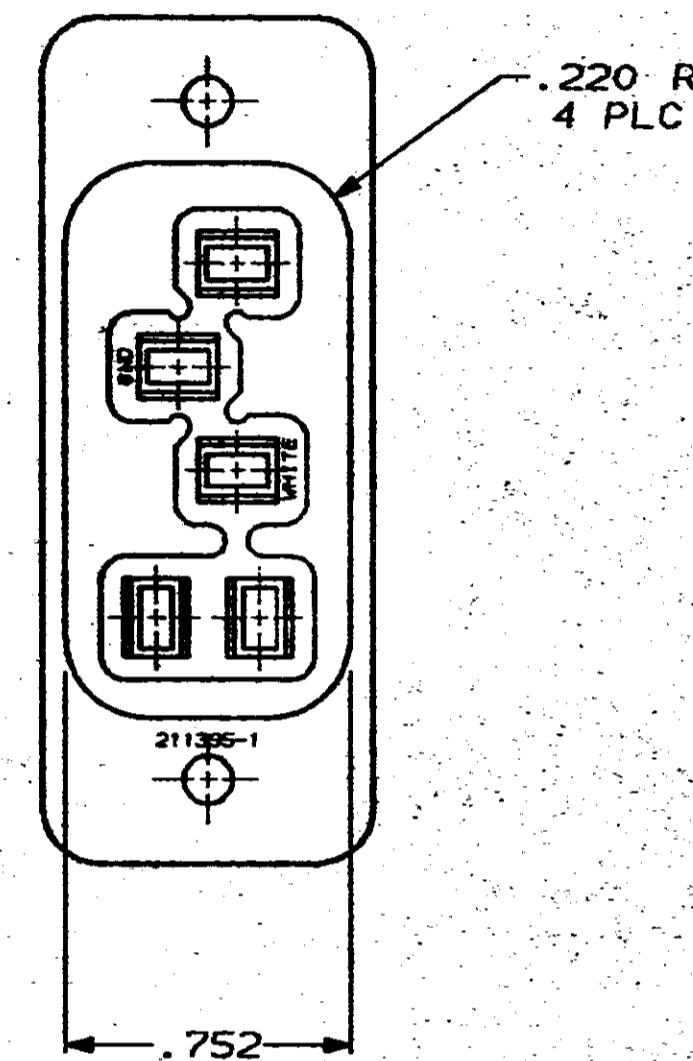
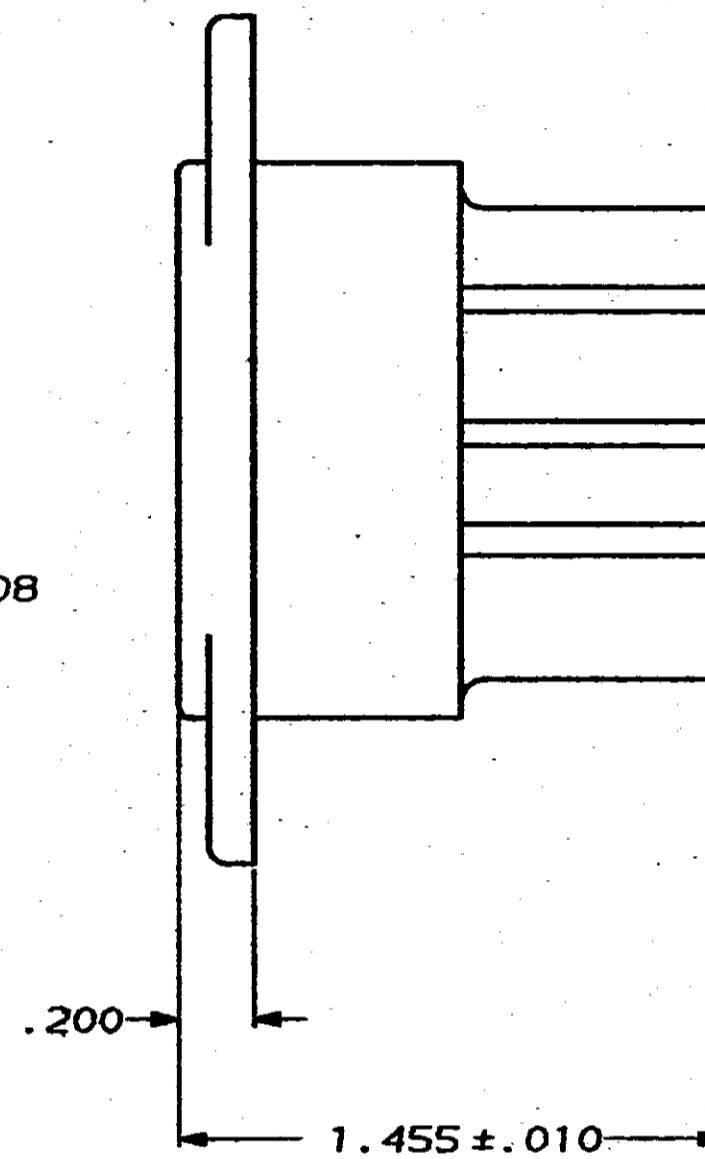
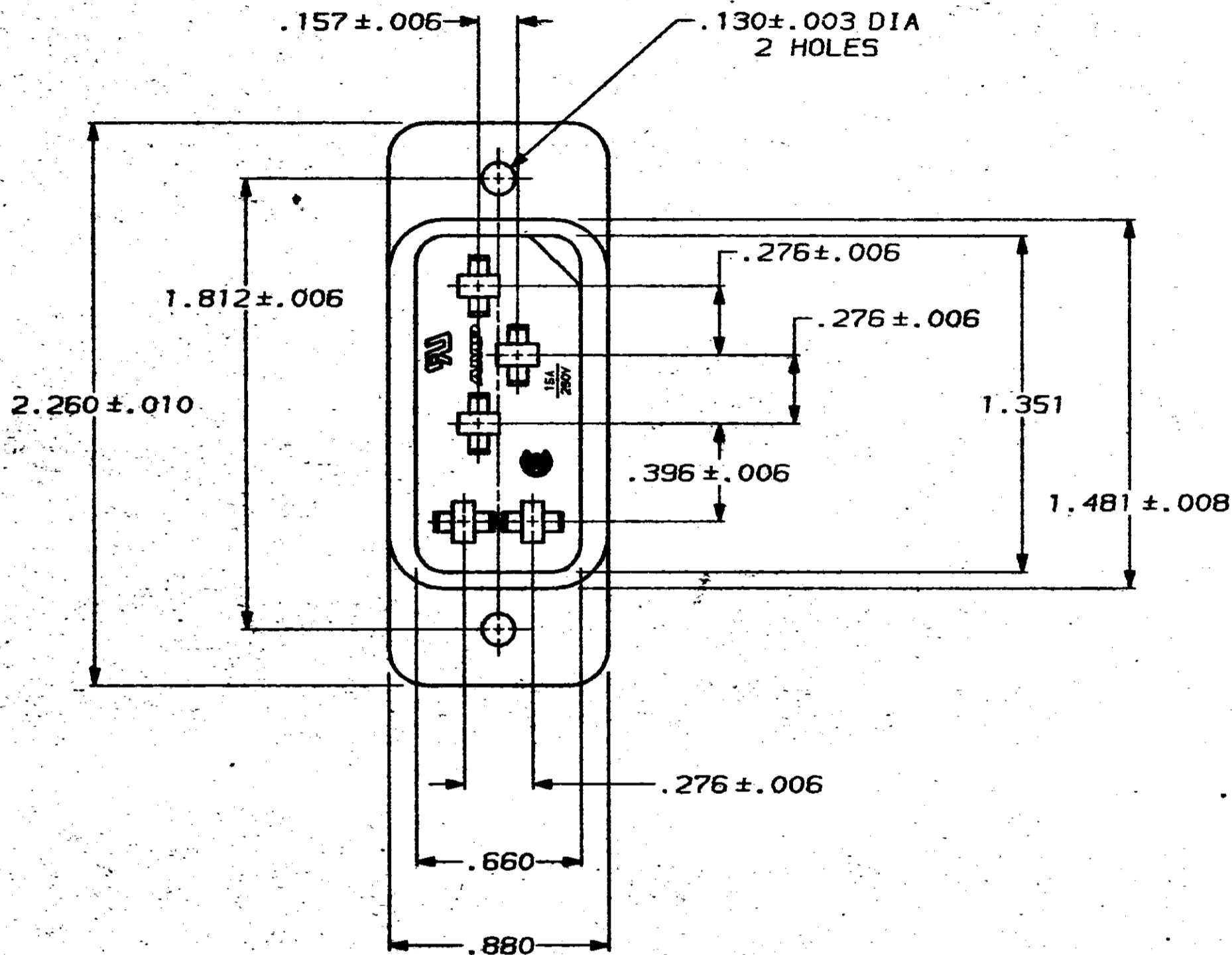


THIS DRAWING IS UNPUBLISHED. RELEASED FOR PUBLICATION .19  
 © COPYRIGHT 19 BY AMP INCORPORATED. ALL INTERNATIONAL RIGHTS RESERVED.

MOD	LOC	DIST	P	F	ZONE	LTR	DESCRIPTION	DATE	APPD
7	BD	39				G	REV & REDRAWN PER ECN BD4796	4-17-91	-
						H	REVISED ECN BD6253	05/05/92	DR
						J	REV PER EC 0020-308-92	02/24/93	RW



RECOMMENDED PANEL OPENING

DO NOT SCALE PRINT. UNLESS SPECIFIED DIMENSIONS IN INCHES TOLERANCES ON: 2 PLC DEC ± .005 3 PLC DEC ± .005 ANGLES * -		DR 4-17-91 H MOLL		211395-1 PART NO	
MATERIAL POLYESTER, UL 94V-0 RATED, GLASS FILLED, BLACK		CHK 05/09/91 R. STONE		AMP AMP Incorporated Harrisburg, PA 17105-3608	
FINISH		APPD 05/09/91 D.L. ROCKER		NAME RECEPTACLE, 5 POSITION, POWER CORD	
WEIGHT		APPD 05/10/91 J. FULPONI		SIZE C	
		PRODUCT SPEC		CAGE CODE 00779	
		APPLICATION SPEC		DRAWING NO 211395	
				SCALE 2:1	
				SHEET 1 OF 1	

211395