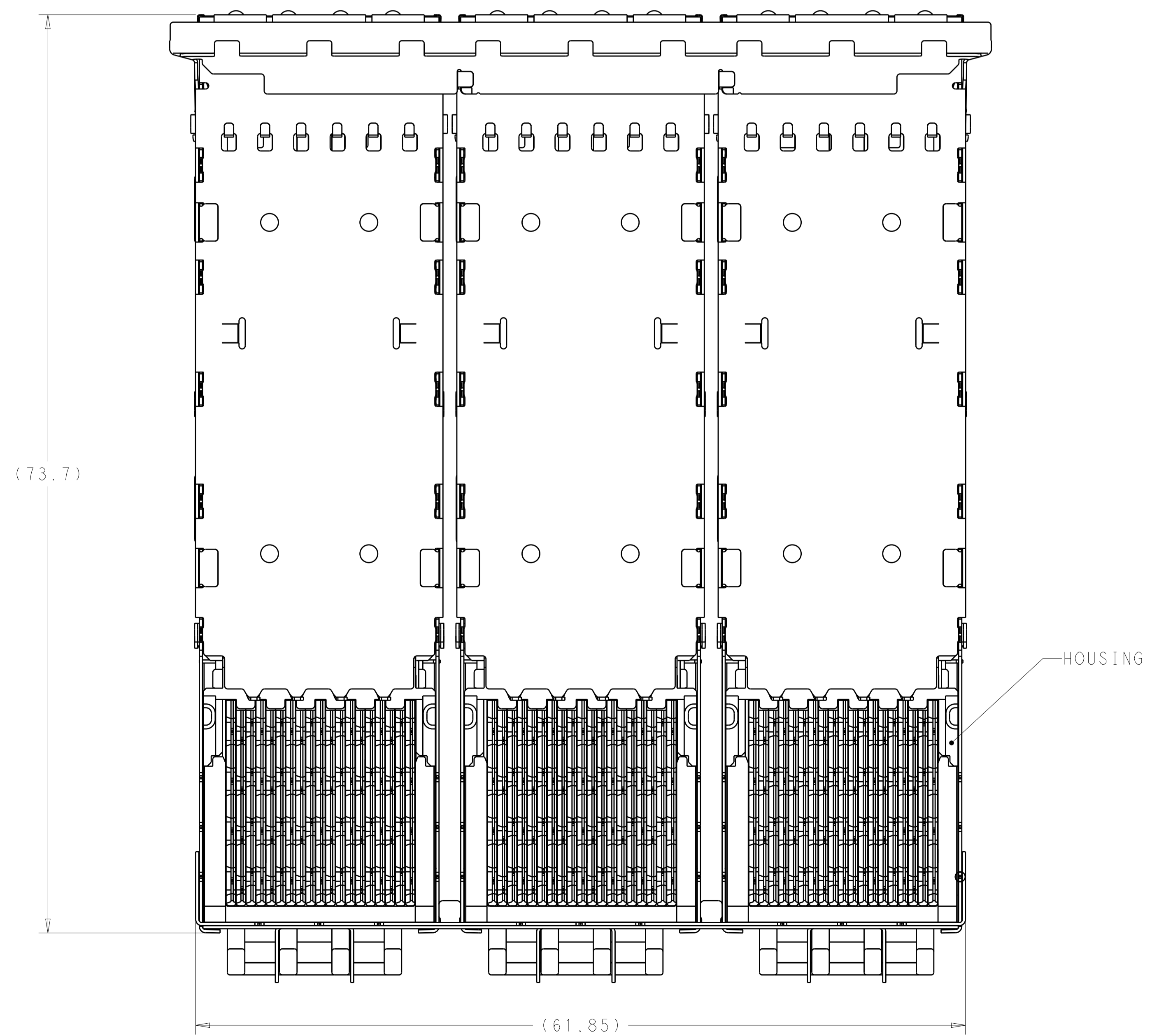
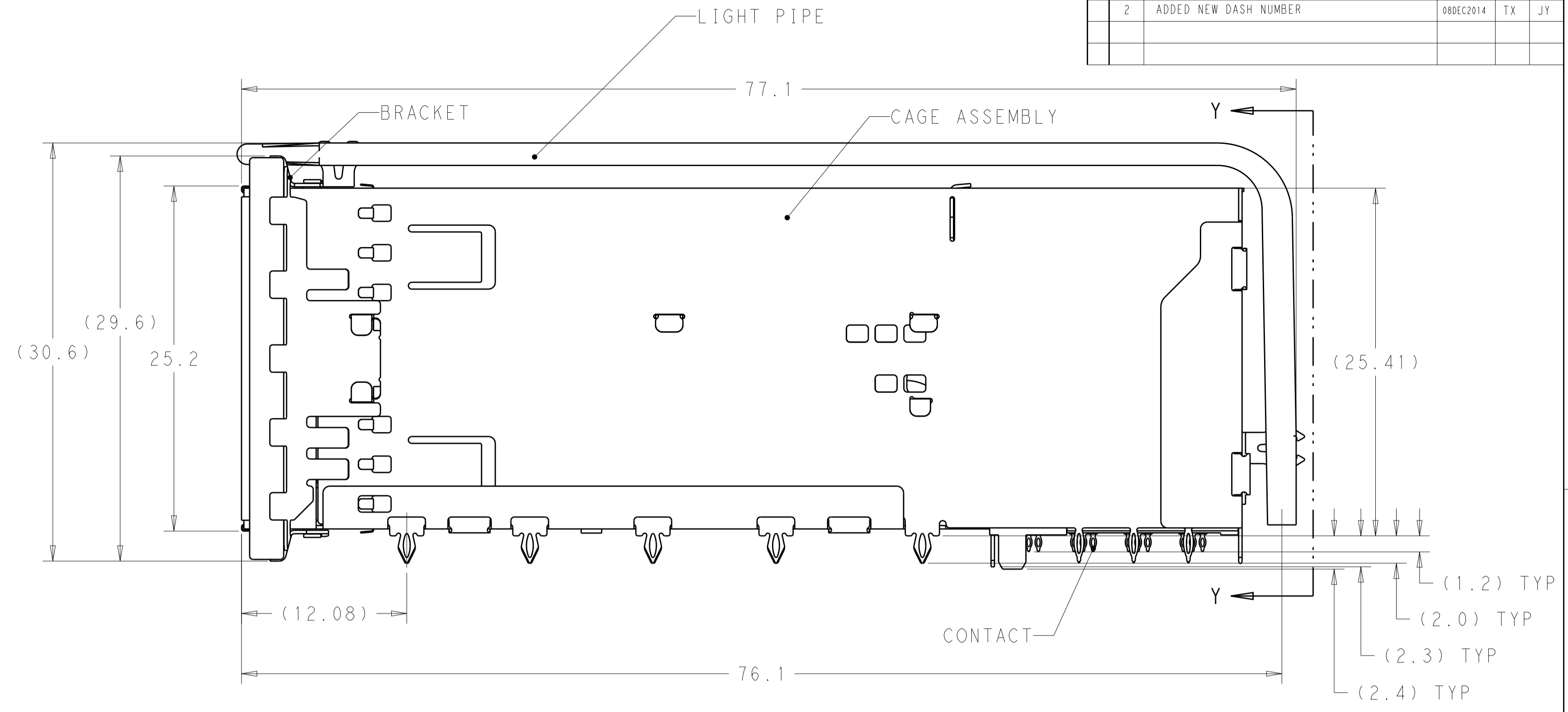
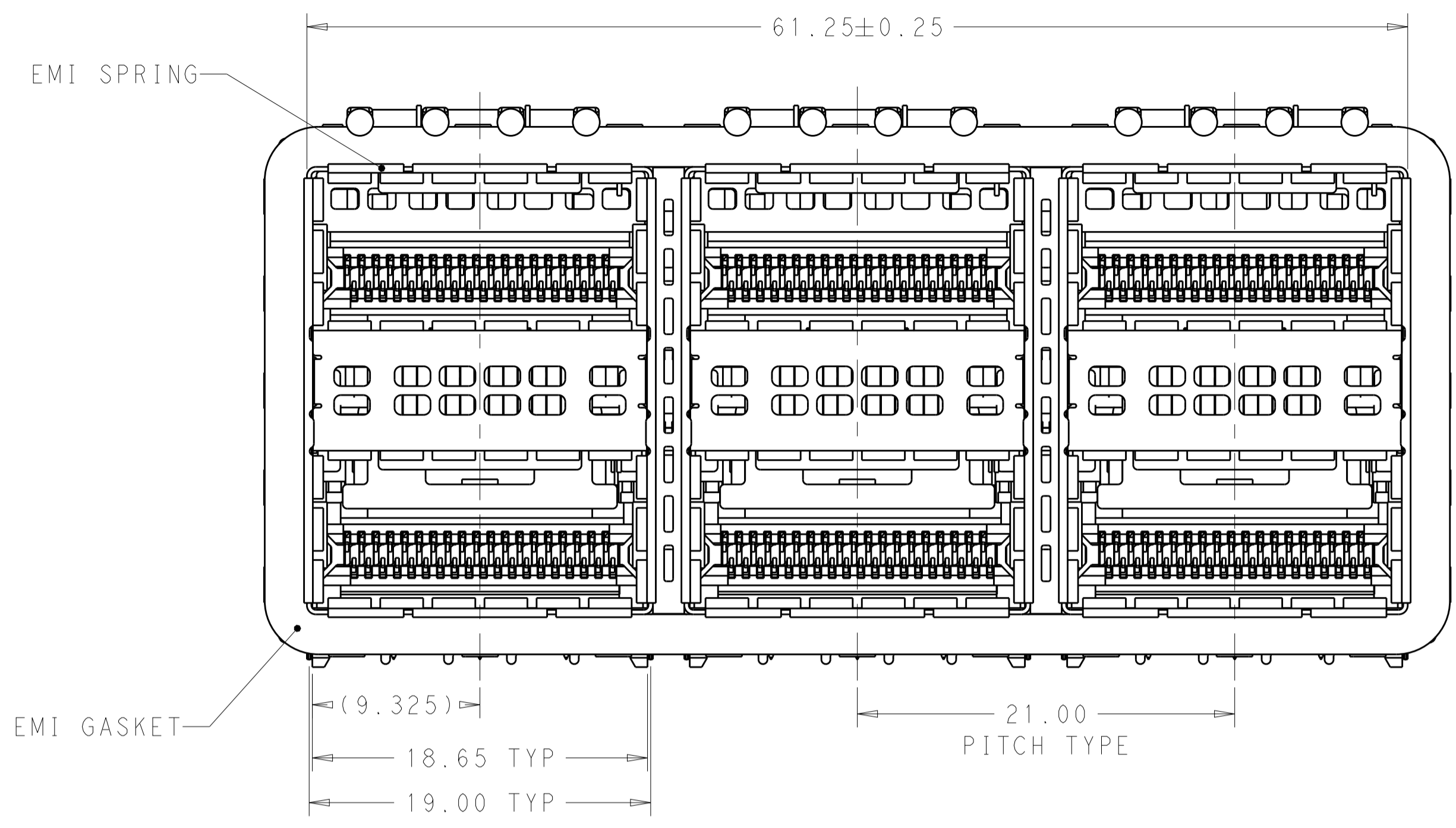


REVISIONS					
P.	LTN	DESCRIPTION	DATE	DMN	APVD
1		INITIAL RELEASED	21OCT13	KD	JY
2		ADDED NEW DASH NUMBER	08DEC2014	TX	JY



2170610-1 AS SHOWN

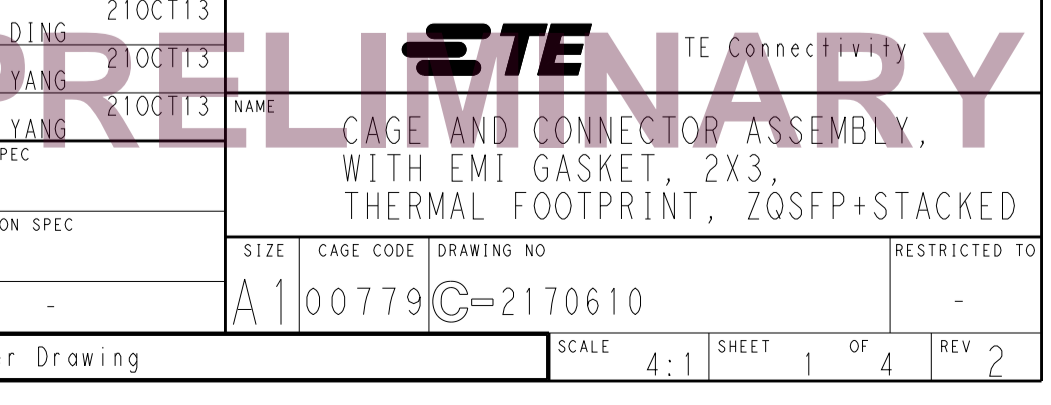
- MATERIALS:
 CAGE ASSEMBLY- NICKEL SILVER ALLOY PER ASTM B 122.
 BRACKET- STAINLESS STEEL.
 EMI SPRING- COPPER ALLOY, NICKEL PLATED.
 EMI GASKET- PLATED FILLED SILICONE WITH 94V-0.
 HOUSING- POLYESTER LCP WITH 94V-0.
 CHICKLET- POLYESTER LCP WITH 94V-0.
 CONTACT- COPPER ALLOY.
 LIGHTPIPE- POLYCARBONATE WITH 94V-0.
- CONTACT FINISH: 0.76µm GOLD ON MATING END, 1.25µm MATT TIN ON SOLDER TAIL, ALL OVER 1.27µm NICKEL.
- DATUM AND BASIC DIMENSION ESTABLISHED BY CUSTOMER.
- MINIMUM PCB THICKNESS: 1.57mm.
- THE ENTIRE AREA OF THE CONNECTOR FOOTPRINT, INDICATED BY THE DASHED LINE, TO BE CONSIDERED THE KEEPOUT AREA FOR COMPONENTS.
- CROSS-HATCHED AREAS REPRESENT ZONES ON THE PCB THAT COME IN CONTACT WITH OR BE IN CLOSE PROXIMITY TO THE PLASTIC HOUSING OR THE CONNECTOR CAGE. INDICATED AREAS TO BE CONSIDERED TRACE FREE.
- PART NUMBER AND DATE CODE MARKED IN APPROXIMATE AREA SHOWN.
- HATCHED AREA IS PLACEMENT ZONE FOR LED. LED SHOULD BE CENTERED WITHIN ZONE. RECOMMEND 0805 PACKAGE.
- CONTACT FINISH: 0.08µm MINIMUM GOLD OVER 0.68µm PALLADIUM-NICKEL ON MATING END, 1.25µm MATT TIN ON SOLDER TAIL, ALL OVER 1.27µm NICKEL.

CONTACT FINISHED	DESCRIPTION	PART NUMBER
2	Au PLATING	2170610-3
9	Pd-Ni PLATING	2170610-2
2	Au PLATING	2170610-1

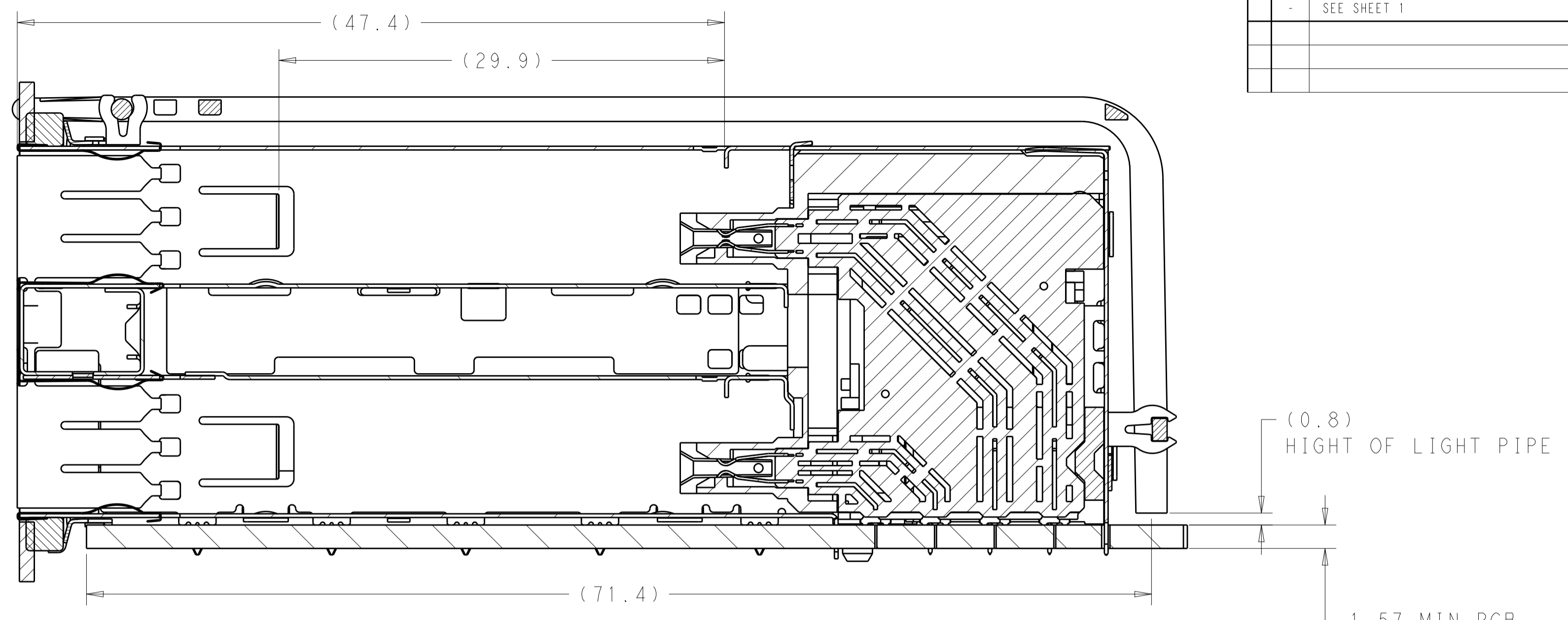
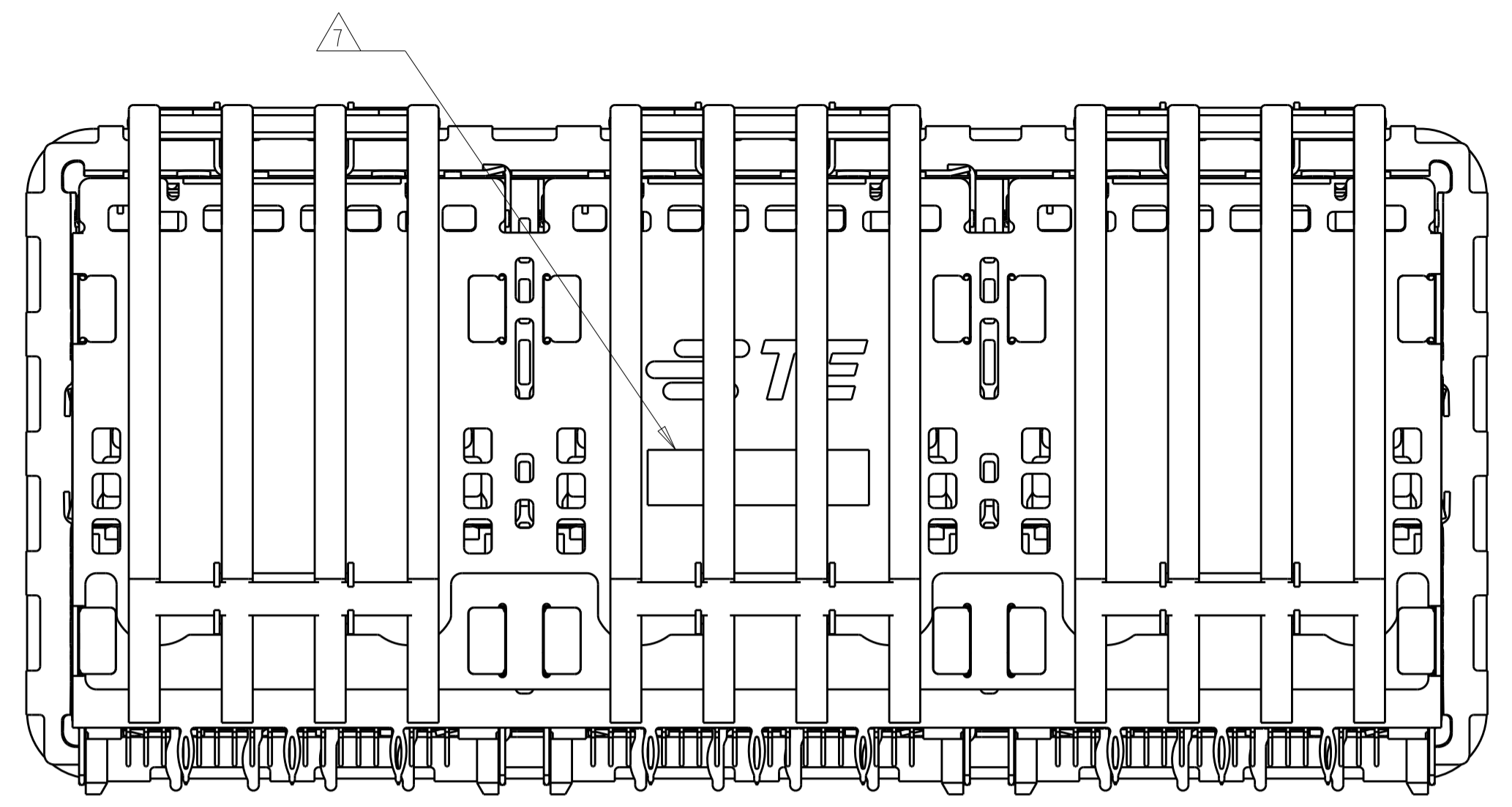
PRELIMINARY - NOT RELEASED FOR PRODUCTION

THIS PRODUCT HAS NOT COMPLETED VALIDATION AND QUALIFICATION TESTING

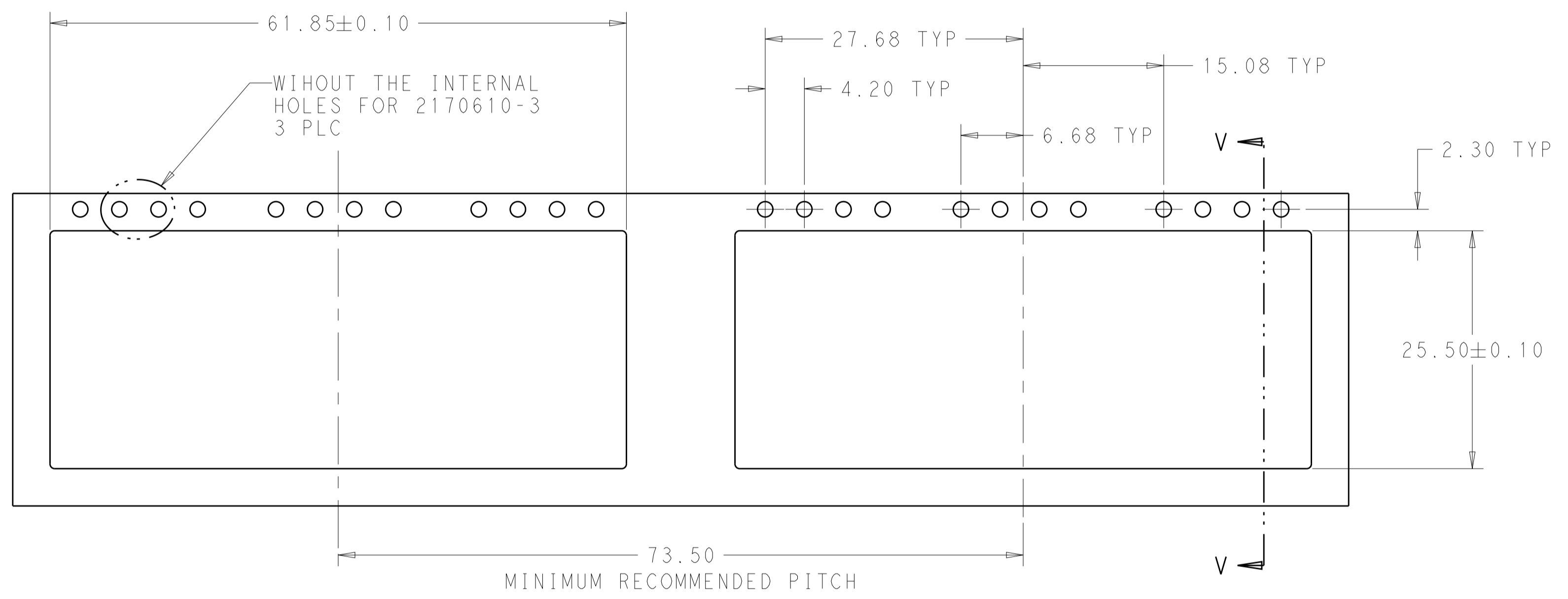
THIS DRAWING IS A CONTROLLED DOCUMENT.		DMN: JREWIN DING 21OCT13
DIMENSIONS: mm		CHK: JASON YANG 21OCT13
TOLERANCES UNLESS OTHERWISE SPECIFIED:		APVD: JASON YANG 21OCT13
0 PLC	±	PRODUCT SPEC
1 PLC	±0.25	APPLICATION SPEC
2 PLC	±0.15	SIZE
3 PLC	±0.013	CAGE CODE
4 PLC	±0.0001	DRAWING NO
ANGLES	±0.0001	REV
MATERIAL: SEE NOTE 1	FINISH: SEE NOTE 2	WEIGHT
Customer Drawing		SCALE: 4:1
A100779C=2170610		SHEET 1 OF 4
		REV 2



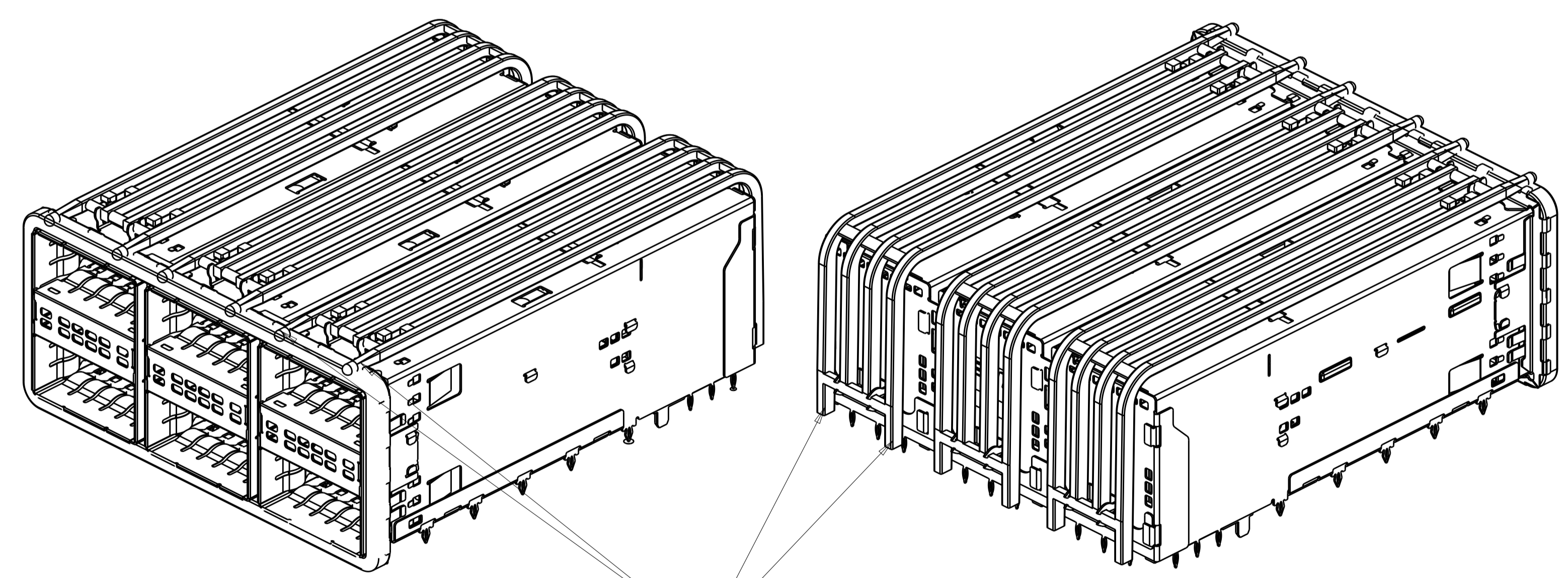
REVISIONS				
P. LTR.	DESCRIPTION	DATE	OWN	APVD
-	SEE SHEET 1	-	-	-



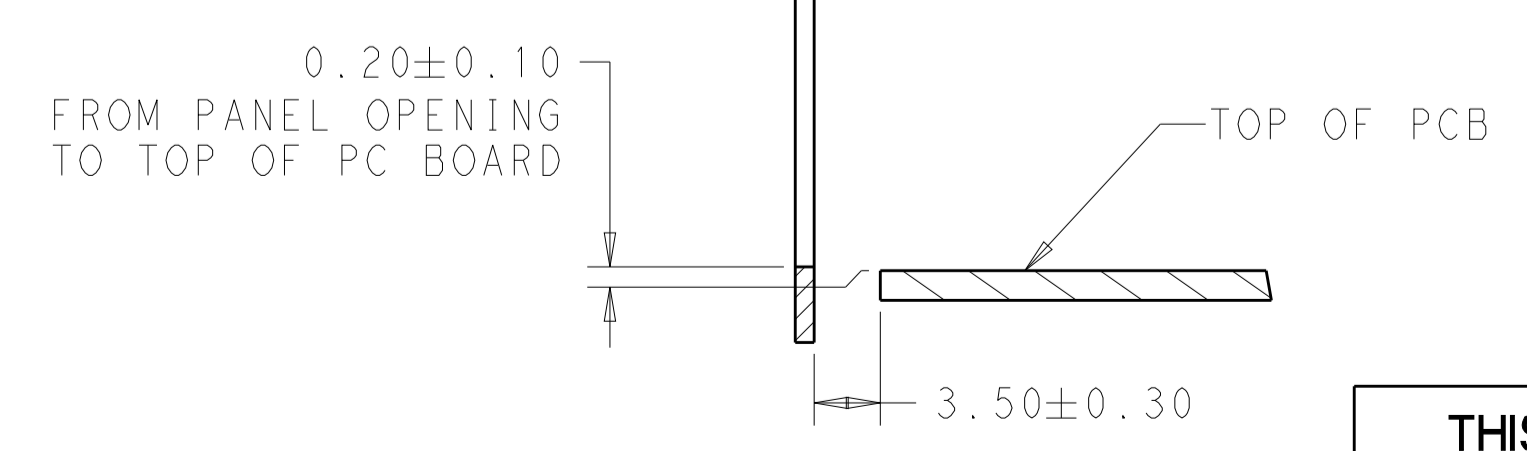
SECTION V-V
SCALE 4:1



RECOMMENDED PANEL CUTOUT
AND PC BOARD, PANEL POSITION



2170610-3
WITH TWO EXTERNAL LIGHT PIPES



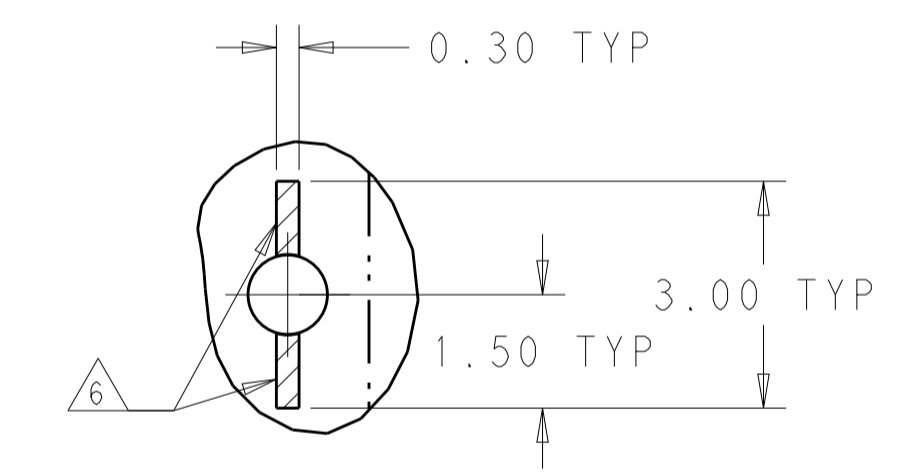
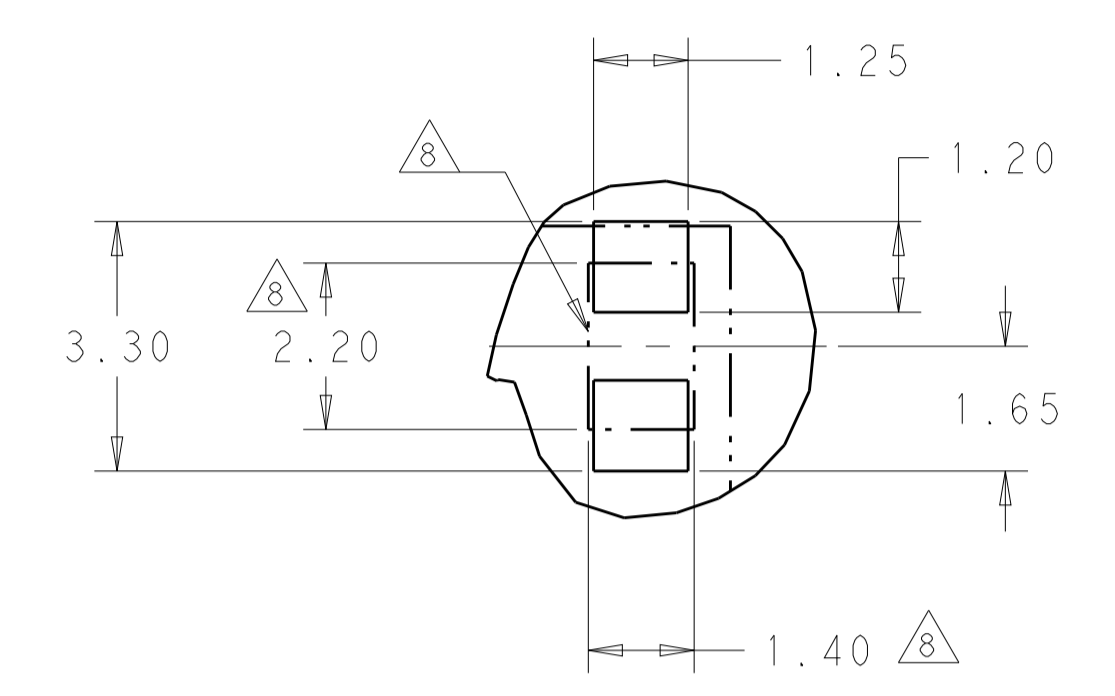
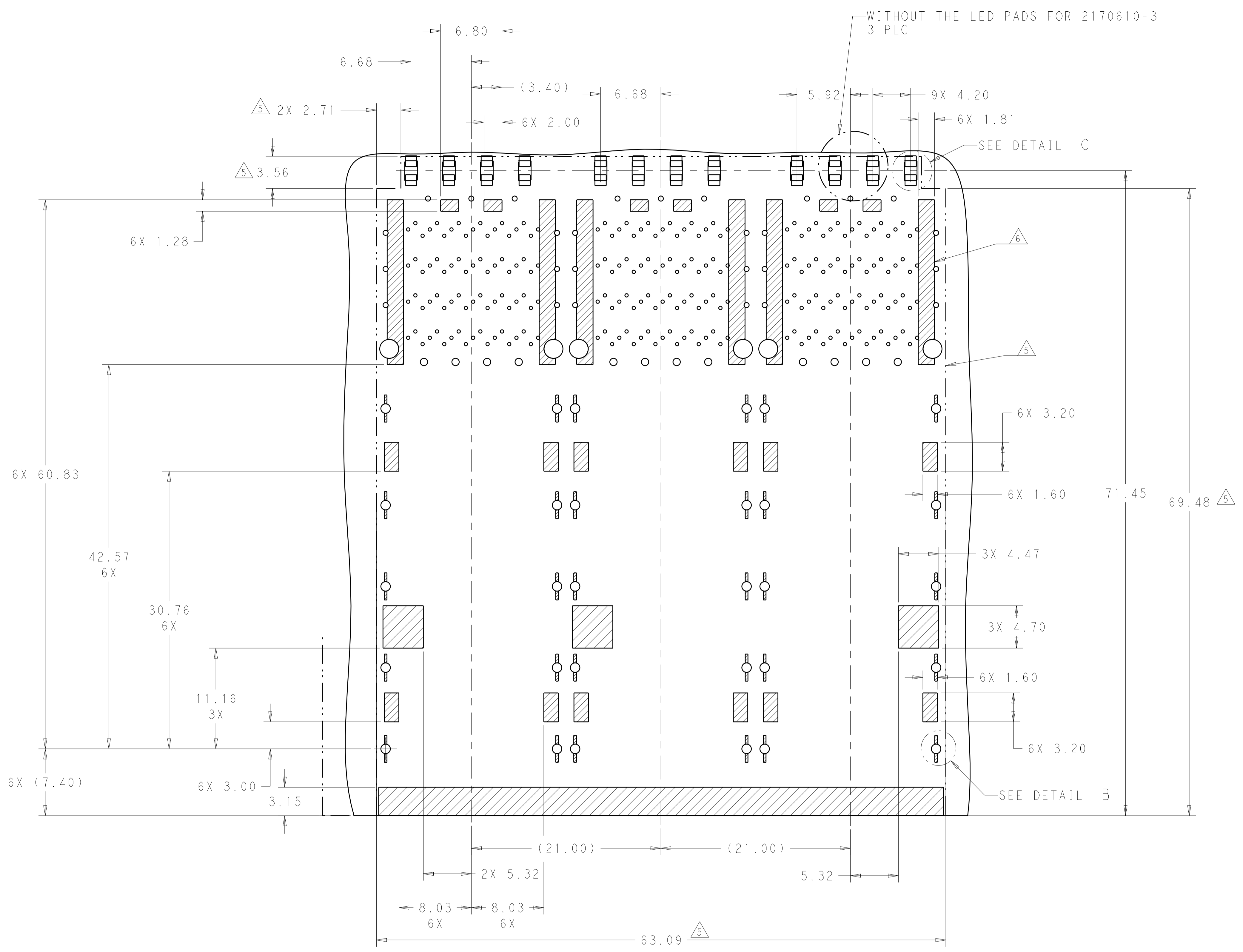
SECTION V-V

THIS PRODUCT HAS NOT COMPLETED VALIDATION AND QUALIFICATION TESTING

PRELIMINARY - NOT RELEASED FOR PRODUCTION

THIS DRAWING IS A CONTROLLED DOCUMENT.		OWN: REVIN DING 210CT13	TE Connectivity
DIMENSIONS: mm		CHK: JASON YANG 210CT13	
TOLERANCES UNLESS OTHERWISE SPECIFIED:		APVD: JASON YANG 210CT13	NAME: CAGE AND CONNECTOR ASSEMBLY, WITH EMI GASKET, 2X3, THERMAL FOOTPRINT, ZQSP+STACKED
0 PLC ±0.25	1 PLC ±0.15	PRODUCT SPEC	SIZE: A100779
2 PLC ±0.13	3 PLC ±0.013	APPLICATION SPEC	CAGE CODE: 2170610
4 PLC ±0.001	ANGLES ±0.001	WEIGHT	RESTRICTED TO
MATERIAL: SEE NOTE 1	FINISH: SEE NOTE 2	Customer Drawing	SCALE: 4:1 SHEET 2 OF 4 REV 2

REVISIONS				
P.	LTN.	DESCRIPTION	DATE	APPROV.
-	-	SEE SHEET 1	-	-



KEEPOUT AREAS
COMPONENT SIDE OF BOARD

PRELIMINARY - NOT RELEASED FOR PRODUCTION

THIS PRODUCT HAS NOT COMPLETED VALIDATION AND QUALIFICATION TESTING

THIS DRAWING IS A CONTROLLED DOCUMENT.		OWN: REVIN DING 210CT13	TE Connectivity
DIMENSIONS: mm		CHK: JASON YANG 210CT13	
TOLERANCES UNLESS OTHERWISE SPECIFIED:		APVD: JASON YANG 210CT13	NAME: CAGE AND CONNECTOR ASSEMBLY, WITH EMI GASKET, 2X3, THERMAL FOOTPRINT, ZQSFP+STACKED
0 PLC ±0.25	1 PLC ±0.15	PRODUCT SPEC	SIZE: A100779C=2170610
2 PLC ±0.15	3 PLC ±0.013	APPLICATION SPEC	SCALE: 4:1
4 PLC ±0.0001	ANGLES ±0.001	WEIGHT	SHEET 4 OF 4
MATERIAL: SEE NOTE 1	FINISH: SEE NOTE 2	Customer Drawing	REV 2