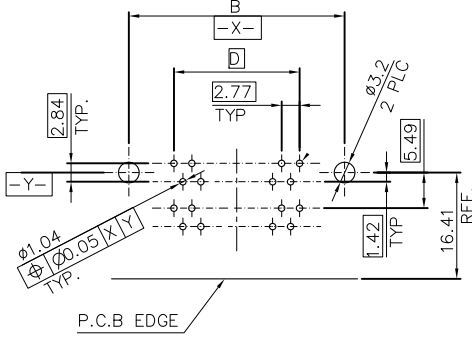
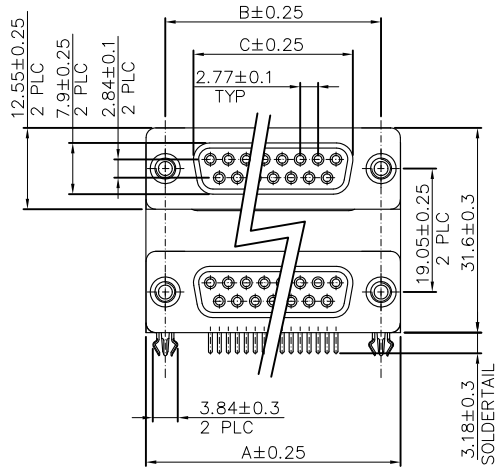
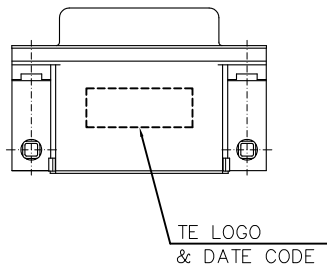
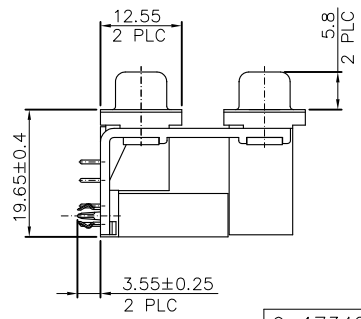
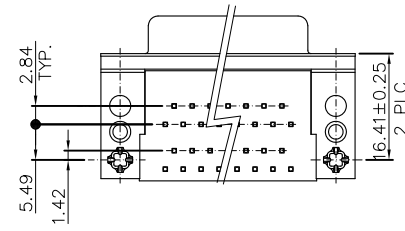


LOC		DIST		REVISIONS					
DW				P	LTR	DESCRIPTION	DATE	DWN	APVD
				B2		REVISED (ECR-12-006776)	03SEP12	JC	WK



RECOMMENDED P.C.B. LAYOUT (THICKNESS: 1.2~1.6mm)  
 TOLERANCE: ±0.05mm (COMPONENT SIDE)

- NOTES:
- MATERIAL:
    - HOUSING/BACK COVER: THERMOPLASTIC, UL94V-0; COLOR: SEE TABLE.
    - CONTACTS: COPPER ALLOY
    - BOARDLOCK: COPPER ALLOY
    - BRACKET: ZINC ALLOY
    - SHELL: STEEL
  - FINISH:
    - CONTACT:
      - GOLD PLATING (SEE TABLE) ON CONTACT AREA.
      - 2.54um [100u"] MIN. MATTE TIN PLATING ON SOLDER TAIL AREA.
      - 1.27um [50u"] MIN. NICKEL UNDERPLATING OVERALL.
    - BOARDLOCK:
      - 1.52um [60u"] MIN. MATTE TIN PLATING OVERALL.
      - 1.27um [50u"] MIN. NICKEL UNDERPLATING OVERALL.
    - SHELL:
      - 60u" MIN. BRIGHT TIN PLATING OVERALL.
  - WAVE SOLDER CAPABLE TO 265°C PER TE SPEC. 109-202, CONDITION B.
- \*. CHOOSE PRE-FIX FROM LEFT TABLE AND SUFFIX FROM RIGHT TABLE FOR DESIRED PART NUMBER COMBINATION.
- ⚠ OBSOLETE PARTS: OBSOLETE CIS STREAMLINING PER D.RENAUD/D.SINISI



X-1734285-6	30 u"	PC99/ACTUAL COLOR	37-37 NOT AVAILABLE
X-1734285-5	10 u"	PC99/ACTUAL COLOR	
X-1734285-4	GOLD FLASH	PC99/ACTUAL COLOR	
X-1734285-3	30 u"	BLACK	
X-1734285-2	10 u"	BLACK	
X-1734285-1	GOLD FLASH	BLACK	
PART NO.	GOLD PLATING	HSG COLOR	

2-1734285-6
2-1734285-5
2-1734285-4
1-1734285-6
1-1734285-5
1-1734285-4
1-1734285-2
1734285-6
1734285-5
OBSOLETE P/N

9-1734285-X	37-37	M3 X 0.5	69.34	63.50	54.80	49.86
8-1734285-X	9-9	M3 X 0.5	30.95	24.99	16.20	11.08
3-1734285-X	37-37	#4-40 UNC	69.34	63.50	54.80	49.86
2-1734285-X	25-25	#4-40 UNC	53.10	47.04	38.30	33.24
1-1734285-X	15-15	#4-40 UNC	39.30	33.30	24.60	19.39
1734285-X	9-9	#4-40 UNC	30.95	24.99	16.20	11.08
PART NO.	PINS	THREADED INSERT	A	B	C	D

THIS DRAWING IS A CONTROLLED DOCUMENT.

DWN S. CHIEN 18MAY2009	
CHK S. CHIEN 18MAY2009	
APVD W. KODAMA 18MAY2009	
PRODUCT SPEC	
108-57517	NAME
QUALIFICATION TEST REPORT	D-SUB STACKED CONNECTOR, RCPT OVER RCPT, THREAD INSERTS, R/A TYPE
501-57590	SIZE CAGE CODE DRAWING NO RESTRICTED TO
WEIGHT SEE SHEET 3	A300779 C=1734285
CUSTOMER DRAWING	SCALE SHEET 1 of 3 REV B2

DIMENSIONS: MM	TOLERANCES UNLESS OTHERWISE SPECIFIED:
	0 PLC ± -
	1 PLC ± 0.3
	2 PLC ± 0.2
	3 PLC ± -
	4 PLC ± -
	ANGLES ± 3'
MATERIAL SEE NOTE	FINISH SEE NOTE

4

3

2

1

THIS DRAWING IS UNPUBLISHED.

RELEASED FOR PUBLICATION

AUG 2006

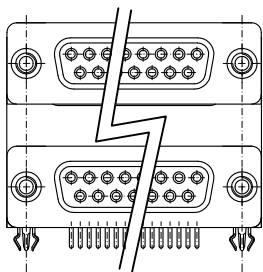
© COPYRIGHT BY TYCO ELECTRONICS CORPORATION. ALL RIGHTS RESERVED.

LOC DW

DIST

REVISIONS

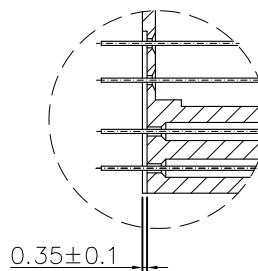
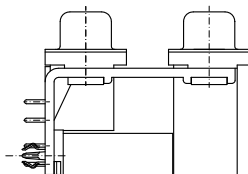
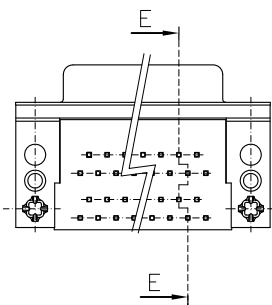
P	LTR	DESCRIPTION	DATE	DWN	APVD
		SEE SHEET 1.			



7-1734285-X	37-37	#4-40 UNC	69.34	63.50	54.80	49.86
6-1734285-X	25-25	#4-40 UNC	53.10	47.04	38.30	33.24
5-1734285-X	15-15	#4-40 UNC	39.30	33.30	24.60	19.39
4-1734285-X	9-9	#4-40 UNC	30.95	24.99	16.20	11.08
PART NO.	PINS	THREADED INSERT	A	B	C	D

X-1734285-6	30 u"	PC99/ACTUAL COLOR	37-37 NOT AVAILABLE
X-1734285-5	10 u"	PC99/ACTUAL COLOR	
X-1734285-4	GOLD FLASH	PC99/ACTUAL COLOR	
X-1734285-3	30 u"	BLACK	
X-1734285-2	10 u"	BLACK	
X-1734285-1	GOLD FLASH	BLACK	
PART NO.	GOLD PLATING	HSG COLOR	

6-1734285-3 <sup>4</sup>  
OBSOLETE P/N



0.35±0.1

SEC. E-E

THIS DRAWING IS A CONTROLLED DOCUMENT.		DWN	<b>TE</b> TE Connectivity	
DIMENSIONS: MM		CHK		
TOLERANCES UNLESS OTHERWISE SPECIFIED:		APVD	NAME	
0 PLC ± -		PRODUCT SPEC	D-SUB STACKED CONNECTOR, RCPT OVER RCPT, THREAD INSERTS, R/A TYPE	
1 PLC ± 0.3		QUALIFICATION TEST REPORT	SIZE	CAGE CODE
2 PLC ± 0.2		WEIGHT	A3	00779
3 PLC ± -		CUSTOMER DRAWING	DRAWING NO. C=1734285	
4 PLC ± -		SCALE	RESTRICTED TO	
ANGLES ± 3'		SHEET	2 of 3	
MATERIAL	FINISH	REV	B2	
SEE NOTE	SEE NOTE			

THIS DRAWING IS UNPUBLISHED.

RELEASED FOR PUBLICATION

AUG 2006

© COPYRIGHT BY TYCO ELECTRONICS CORPORATION. ALL RIGHTS RESERVED.

LOC DW

DIST

REVISIONS

P	LTR	DESCRIPTION	DATE	DWN	APVD
		SEE SHEET 1.			

NOTE :

1. DIMENSION :

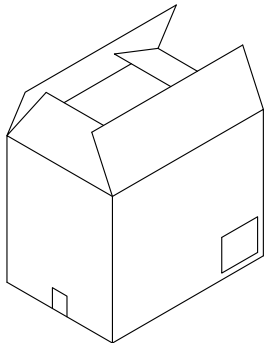
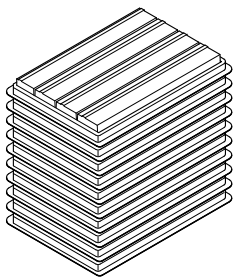
TRAY : L=310, W=215, H=30

CARTON : L=335, W=230, H=280

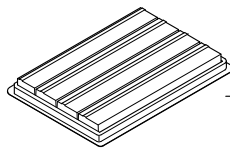
2. TRAY : PS or PET

3. QUANTITY:

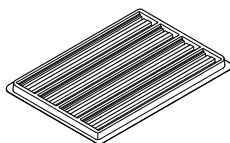
PIN NO.	9-9	15-15	25-25	37-37
PCS/TRAY	36	28	20	16
TRAY/CARTON	10	10	10	10
PCS/CARTON	360	280	200	160
NET WEIGHT	10.12	9.73	9.53	10.10
GROSS WEIGHT	11.55	11.16	11.01	11.53



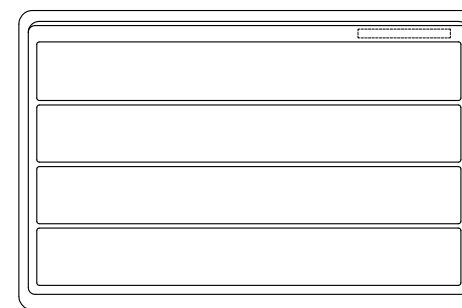
CARTON



TOP COVER



TRAY



TRAY LAYOUT

THIS DRAWING IS A CONTROLLED DOCUMENT.		DWN	<b>STE</b> TE Connectivity	
		CHK		
DIMENSIONS: MM		APVD	NAME	
TOLERANCES UNLESS OTHERWISE SPECIFIED:		PRODUCT SPEC	D-SUB STACKED CONNECTOR, RCPT OVER RCPT, THREAD INSERTS, R/A TYPE	
0 PLC ± -		QUALIFICATION TEST REPORT	SIZE	CAGE CODE
1 PLC ± 0.3		WEIGHT	DRAWING NO	
2 PLC ± 0.2		CUSTOMER DRAWING	A300779 C=1734285	
3 PLC ± -		SCALE	SHEET	REV
4 PLC ± -			3 of 3	B2
ANGLES ± 3'				
MATERIAL	FINISH			
SEE NOTE	SEE NOTE			