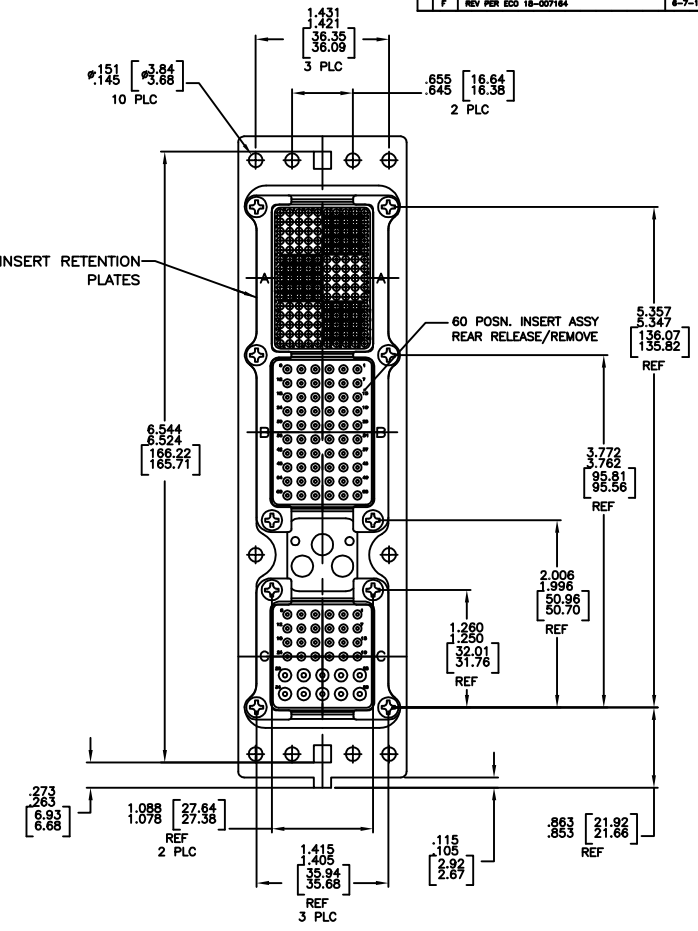
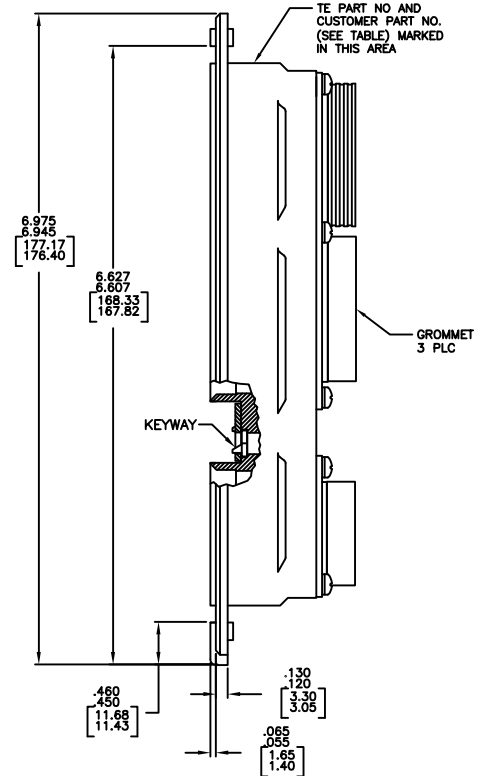
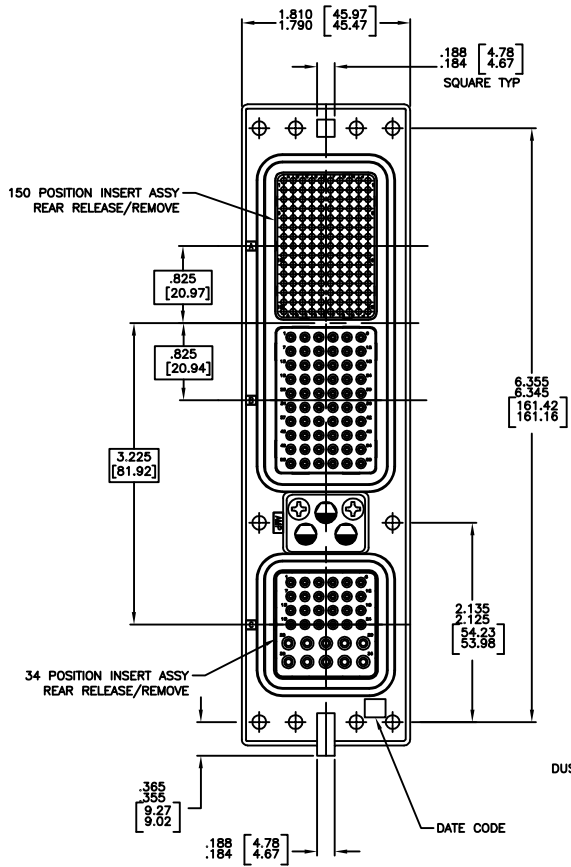


THIS DRAWING IS UNPUBLISHED. ALL RIGHTS RESERVED.

REVISIONS			
REV	DESCRIPTION	DATE	BY / APPR
F	REV PER ECO 18-007184	6-7-18	CT / RL



- CONNECTOR DIMENSIONS ARE PER ARINC 600 SPECIFICATION
- DUST COVER INSTALLED FOR SHIPPING.
- KEYING SHOWN IN POSITION "01" FOR REFERENCE ONLY. SEE TABLE FOR KEYING POSITION. FOR POSITION "00" KEYING SHIPPED UNASSEMBLED.
- CONTACTS PACKAGED SEPARATELY AND SHIPPED WITH CONNECTOR.

COMPONENT	MATERIAL	FINISH
SHELL	DIE CAST ALUMINUM PER ASTM-B-85	ELECTROLESS NICKEL PER MIL-C-28074
INSERT RETENTION PLATES	ALUMINUM ALLOY PER ASTM-B-209	ELECTROLESS NICKEL PER MIL-C-28074
SCREWS AND LOCKWASHERS	STEEL OR STAINLESS STEEL	CHROMATE OVER ZINC OR PASSIVATED
POLARIZING KEYS	ZINC ALLOY PER ASTM-B-58	-
POLARIZING KEY RETAINING PLATE	ALUMINUM ALLOY PER MIL-M-24519	BLUE ANODIZED PER MIL-A-5825
INSERTS	THERMOSET OR THERMOPLASTIC PER MIL-M-24519	-
DUST COVER	CONDUCTIVE THERMOPLASTIC	-

KEYING POSITION	CONTACTS INCLUDED AND NOT INSTALLED	PART NUMBER
"55"	MODULE A 208264-2 (SZ 22 CRIMP SOCKET CONTACT; QTY=150) MODULE B 208265-3 (SZ 20 CRIMP PIN CONTACT; QTY=60) MODULE C 208265-3 (SZ 20 CRIMP PIN CONTACT; QTY=24) 208268-3 (SZ 16 CRIMP PIN CONTACT; QTY=10)	2221458-2
"01"	MODULE A 208264-2 (SZ 22 CRIMP SOCKET CONTACT; QTY=150) MODULE B 208265-3 (SZ 20 CRIMP PIN CONTACT; QTY=60) MODULE C 208265-3 (SZ 20 CRIMP PIN CONTACT; QTY=24) 208268-3 (SZ 16 CRIMP PIN CONTACT; QTY=10)	2221458-1

BACC66G51F01AA	2221458-2
-	2221458-1
CUSTOMER PART NO.	TE PART NO.

THIS DRAWING IS A CONTROLLED DOCUMENT.

DATE: 6-28-18
DESIGNED BY: C.C. THOMAS
DRAWN BY: W. BERNHART
CHECKED BY: W. BERNHART
APPROVED BY: [Signature]
SCALE: 0.000000
CUSTOMER DRAWING: A1 00779C-2221458
SIZE: 100/60/34, RR WITH GROMMETS
TE Connectivity