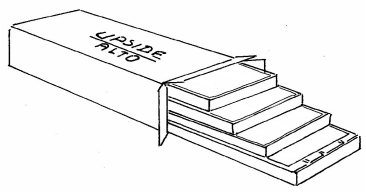
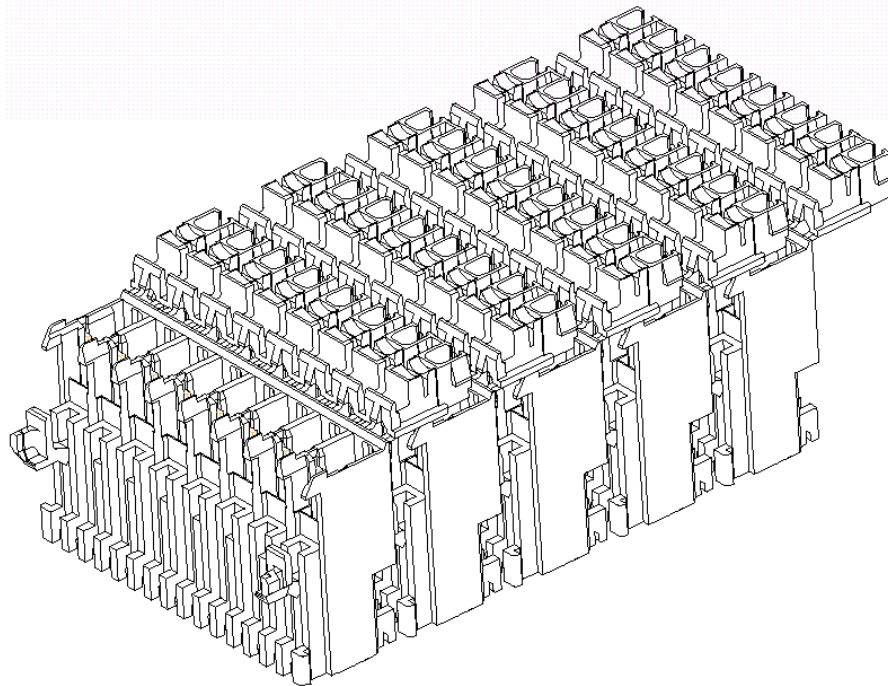


SCOPE

This specification covers the material and standard packaging ON TRAY method for MONO-SHAPE Mark II TAB Connectors

Subject	Page	Ref. picture
2.1 Material	2	
2.2 Packaging preparation (Carton tray)	2	
2.3 Packaging preparation (Trays in bag and shipping box)	4	
2.4 Packaging preparation (Shipping on Pallet)	6-7	
2.5 Table 1 : Product and Pkg. material composition for P.C.B. Connector Box	8	

Picture 1)
Typical Connectors Strip Layout



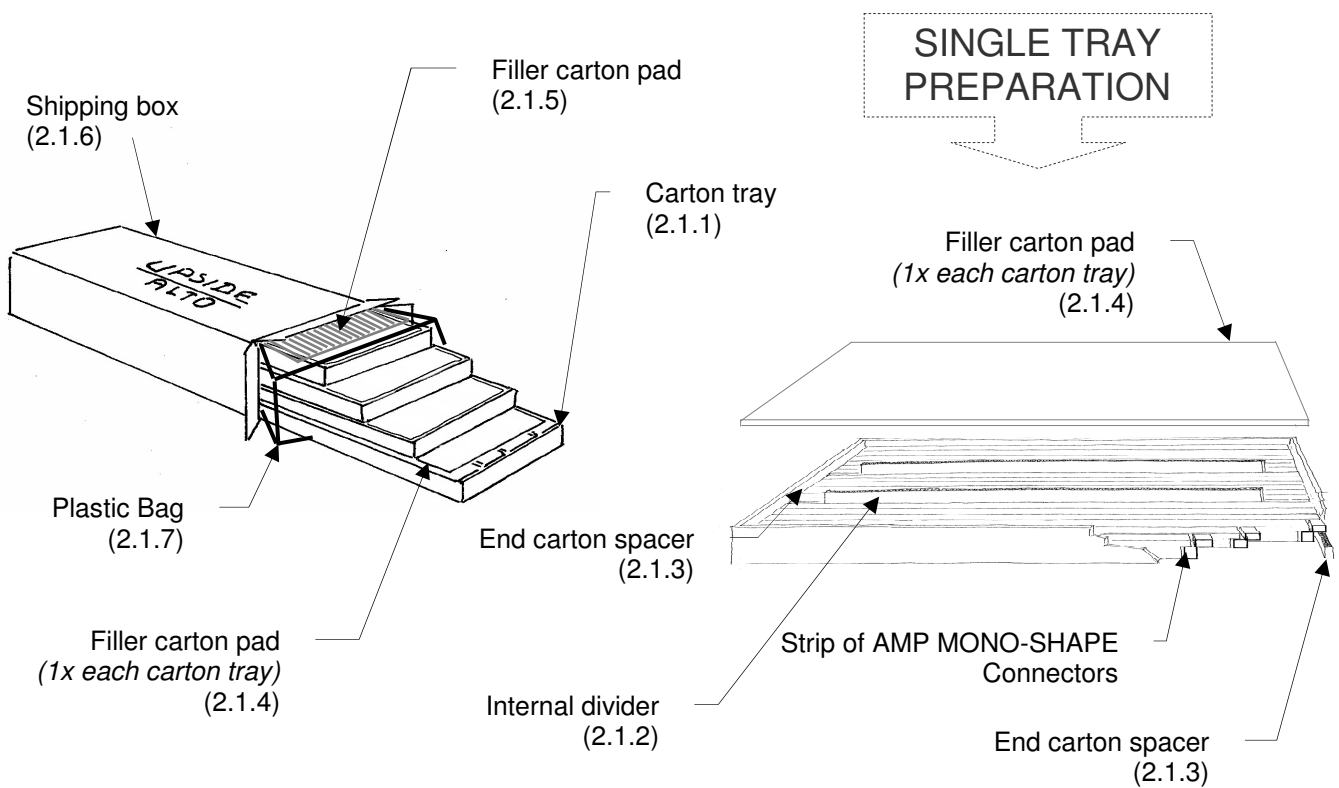
B2	Changed end carton spacer part number	C.C.	Jan 07	G.T.	Jan 07
B	Revised Labelling & Packaging composition	C.C.	March 06	G.T.	March 06
A	First Issue	C.C.	10-Oct-2005	G.T.	10-Oct-2005
DR. C. CORDOLA	DATE	APVD G.TURCO	DATE	CHK	DATE

This specification is a controlled document.

This information is confidential and is disclosed to you on condition that no further disclosure is made by you to other than Tyco personnel without written authorization from TYCO Italia.

2.1 Material

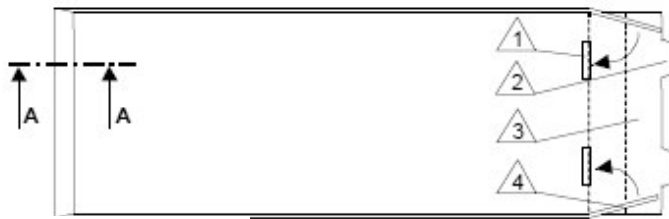
- 2.1.1 Carton tray P/N 298132-01
- 2.1.2 Internal divider P/N 298153-02
- 2.1.3 End carton spacer P/N 298161-01
- 2.1.4 Filler carton pad P/N 298154-02
- 2.1.5 Filler carton pad P/N 298154-01 (if necessary, for instructions see para 2.3.4 and table 1)
- 2.1.6 Shipping box P/N 298088-02
- 2.1.7 Plastic Bag P/N 725748-01
- 2.1.8 Self-adhesive label P/N 1501949-01 (2x)
- 2.1.9 Self-adhesive label according to format Label P/N 999639-01
- 2.1.10 Self-adhesive tape (transparent and without logo)
- 2.1.11 Wooden pallet (L=1200 mm, B=800 mm, H=130 mm)
- 2.1.12 Plastic stretch wrap film



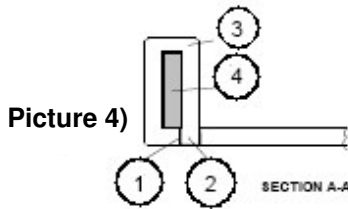
Picture 2)

2.2 Packaging preparation (Carton Tray)

- 2.2.1 Tray P/N 298132-01 must be manually folded as described on pictures 3 and 4. The side walls has to be bent upwards and the two overlaps folded in a 90° angle (Picture 3). The surplus of the gable end wall must be folded over the two overlaps and snapped in to the punched out hole (Picture 4).



Picture 3)



Picture 4)

- △ 1 Punching out
- △ 2 Snap latch
- △ 3 Gable end
- △ 4 Overlap side wall

2.2.2 Each configuration of connectors must be strapped together in strip as shown on picture 1, page 1

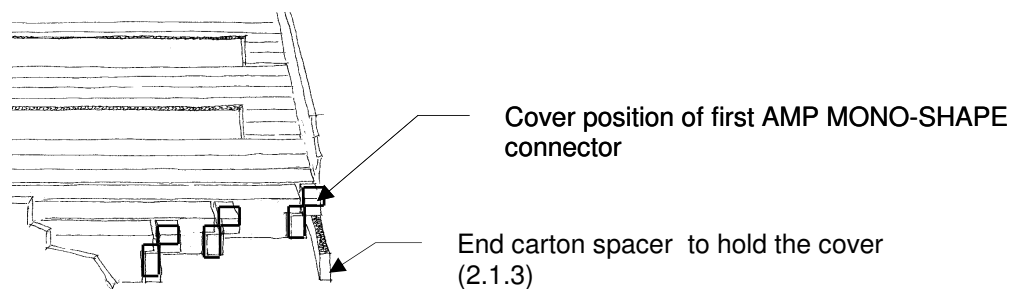
2.2.3 Each carton tray must be filled with a correct quantity of connector strips. See Table 1 for q.ties.

2.2.4 Then, each carton tray must be filled with following packaging items:

- a correct qty. of internal dividers P/N 298153-02, inserted between the connector strips;
- two end carton spacer P/N 298161-01 placed at the at the beginning and at the end of the connector strip, in order to reduce connector movement inside the tray and to hold the cover of the first connector on the strip, as shown on picture 5;
- one filler carton pad P/N 298154-02 placed on the top of the tray.

See picture 2 for reference, special attention to detail of “single tray preparation”.

IMPORTANT: For min. q.ty of P/N 298153-02, see recommendations of Table 1. Since the aim of this item is to prevent the strapped conn.s from moving during transport, the q.ty of item P/N 298153-02 COULD BE INCREASED, if necessary, to minimize the room inside the tray.

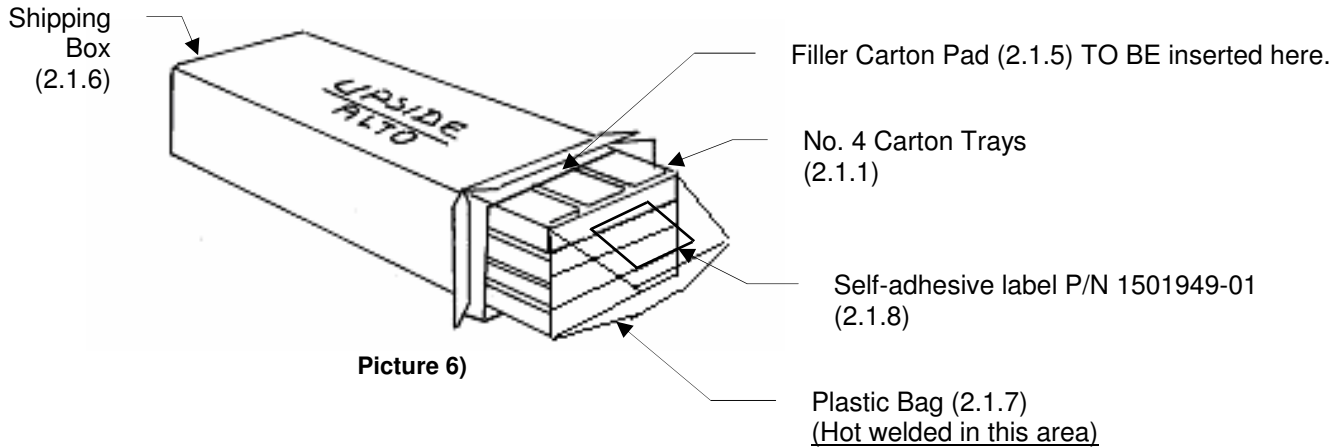


Picture 5)

2.3 Packaging preparation (Trays into plastic bag & shipping box)

To maintain required level of product humidity, and to avoid the loss of it due to longer storage causes product brittleness, following steps MUST BE done with special attention:

- 2.3.1 No. 4 carton trays must be stacked and filled into a plastic bag PN 725748-01, and then bag sealed by hot welding on the end side. (See picture 6 for ref).



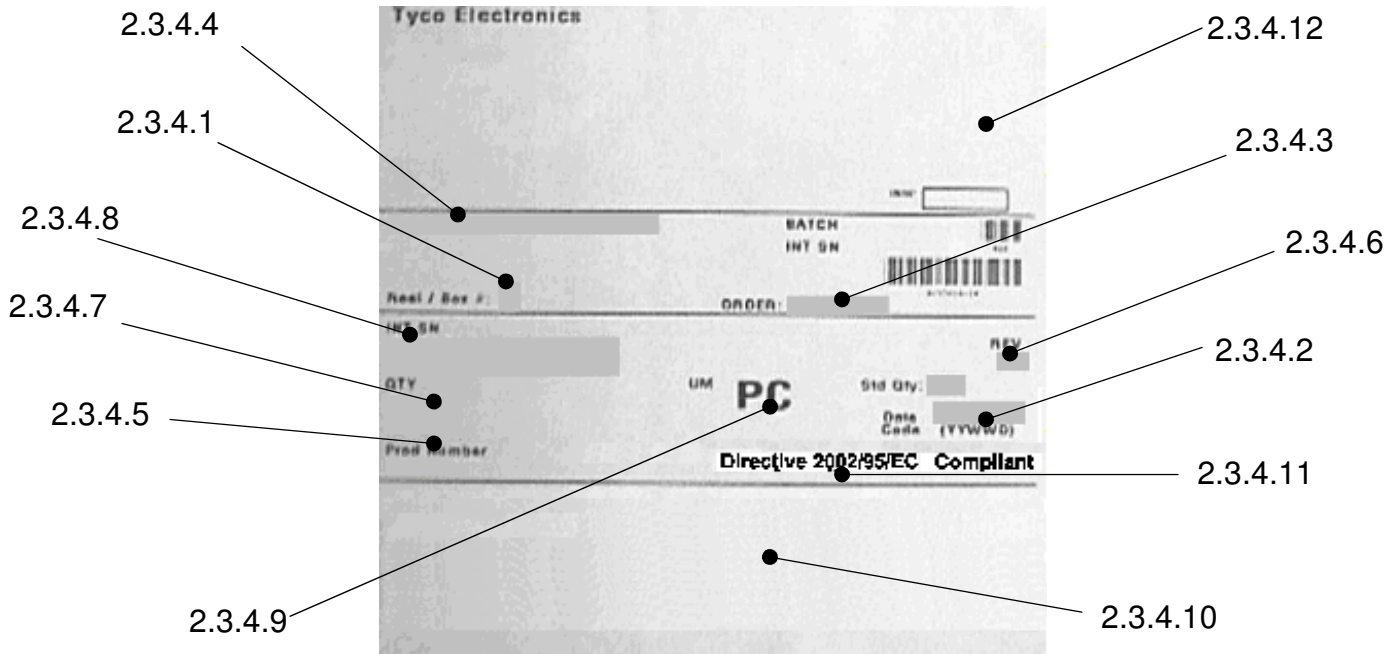
Picture 6)

- 2.3.2 One self-adhesive label P/N 1501949-01 has to be applied on the plastic bag, as shown on picture 6.
- 2.3.3 The 4 trays sealed in the plastic bag must be placed into a shipping box P/N 298088-02
- 2.3.4 A filler carton pad P/N 298154-01 could be inserted inside the box and up to the packaged tray as filler material.

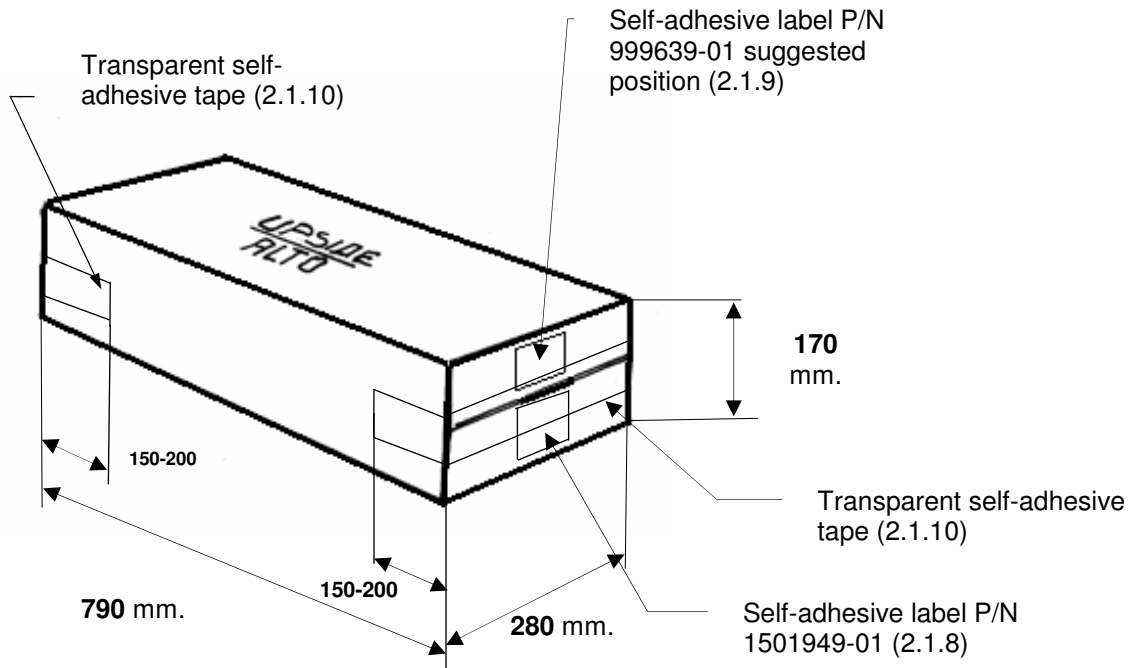
IMPORTANT: since the aim of this item is to prevent the sealed trays from moving during transport, the presence and q.ty of item P/N 298154-01 MUST BE PROVIDED in case of necessity, and only to minimize the room inside the shipping box.

- 2.3.5 The box so filled has to be closed with appropriate transparent self-adhesive tape.
- 2.3.6 One self-adhesive label P/N 999639-01 has to be printed in the proper field located approx. as show on picture 7, character height suggested from 4 to 6 mm, with following data:
 - 2.3.4.1 - Box/PKG sequential Number
 - 2.3.4.2 - Date Code (format DD/MM/YY)
 - 2.3.4.3 - Factory Order
 - 2.3.4.4 - Product description (Mono Shape MK II PCB Connector)
 - 2.3.4.5 - Product Part Number
 - 2.3.4.6 - Part Revision
 - 2.3.4.7 - Connector Quantity per Box
 - 2.3.4.8 - Internal Serial Number
 - 2.3.4.9 - Unit of Measure for Connector Quantity
 - 2.3.4.10- Area For bar code symbol for License Tag number
 - 2.3.4.11– Inscription for EC Directive compliance, as per Tyco spec 202-38
 - 2.3.4.12- Additional customer data shall be added based on Specific Customer needs. Those information shall be detailed and specified on the Customer order , and shall be located on the label shows:
 - Customer Name (max 25 digit)
 - Customer Code Number (10 digit)
 - Customer data Bar codes area

2.3.5 Additional self-adhesive label P/N 1501949-01 has to be applied on the carton box, as shown on picture 8.



Picture 7)



Picture 8)

2.4. PACKAGING PREPARATION (Bulk Packaging- Shipping on Pallet)

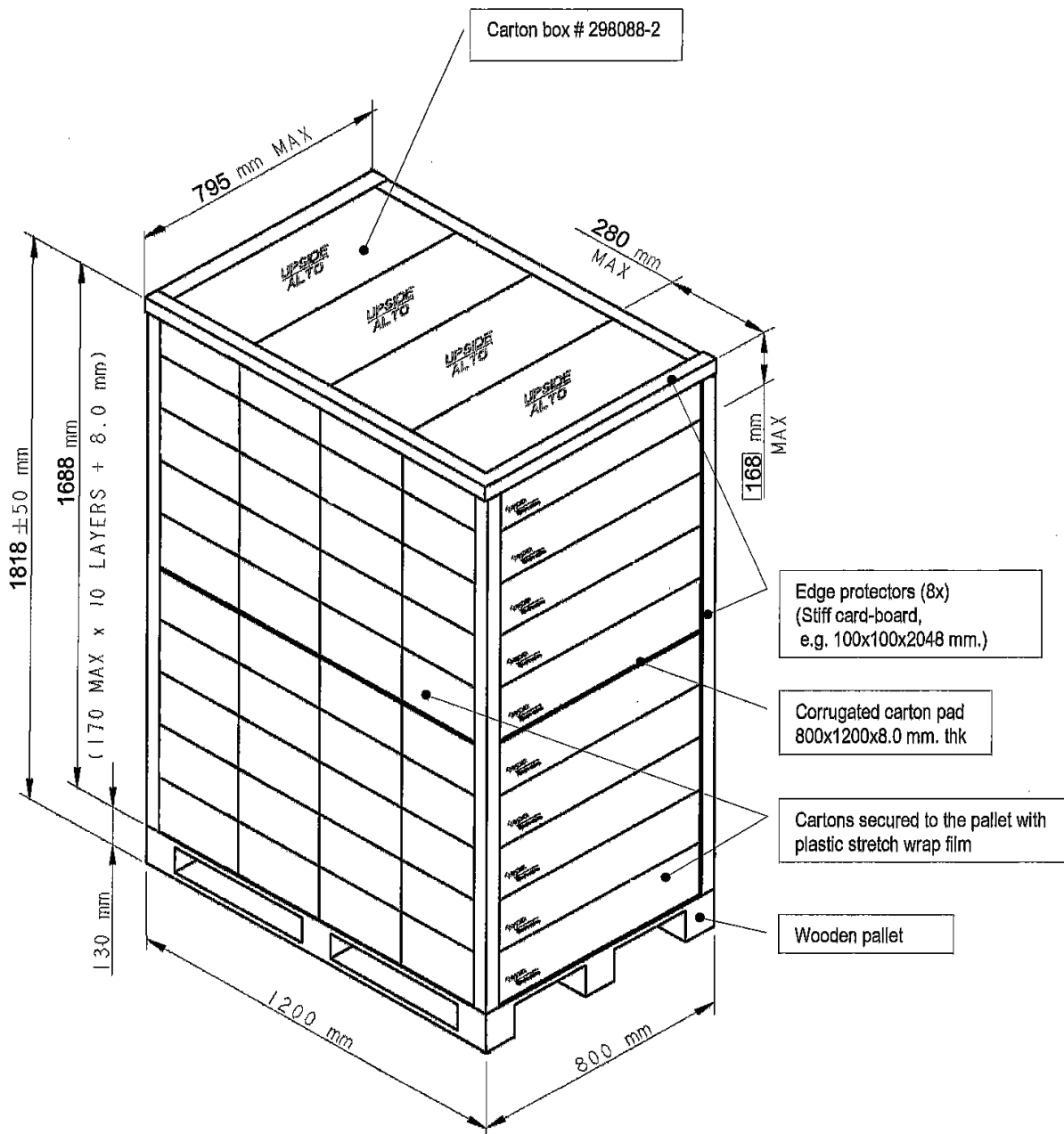
2.4.1 For product Shipped to TELAG ONLY

A quantity of 40 boxes max (10 layers of 4 boxes each) have to be stacked lying flat on wooden pallet, secured with plastic stretch wrap film and then delivered.

See below picture as correct positioning.

Recommendations:

- The writing “UPSIDE / ALTO” have to be always visible from pallet.
- The self-adhesive label has to be always complied and visible.
- The outer border of the pallet should not be exceeded.
- DO NOT STACK PALLETS



“10 Layers shipping crate”

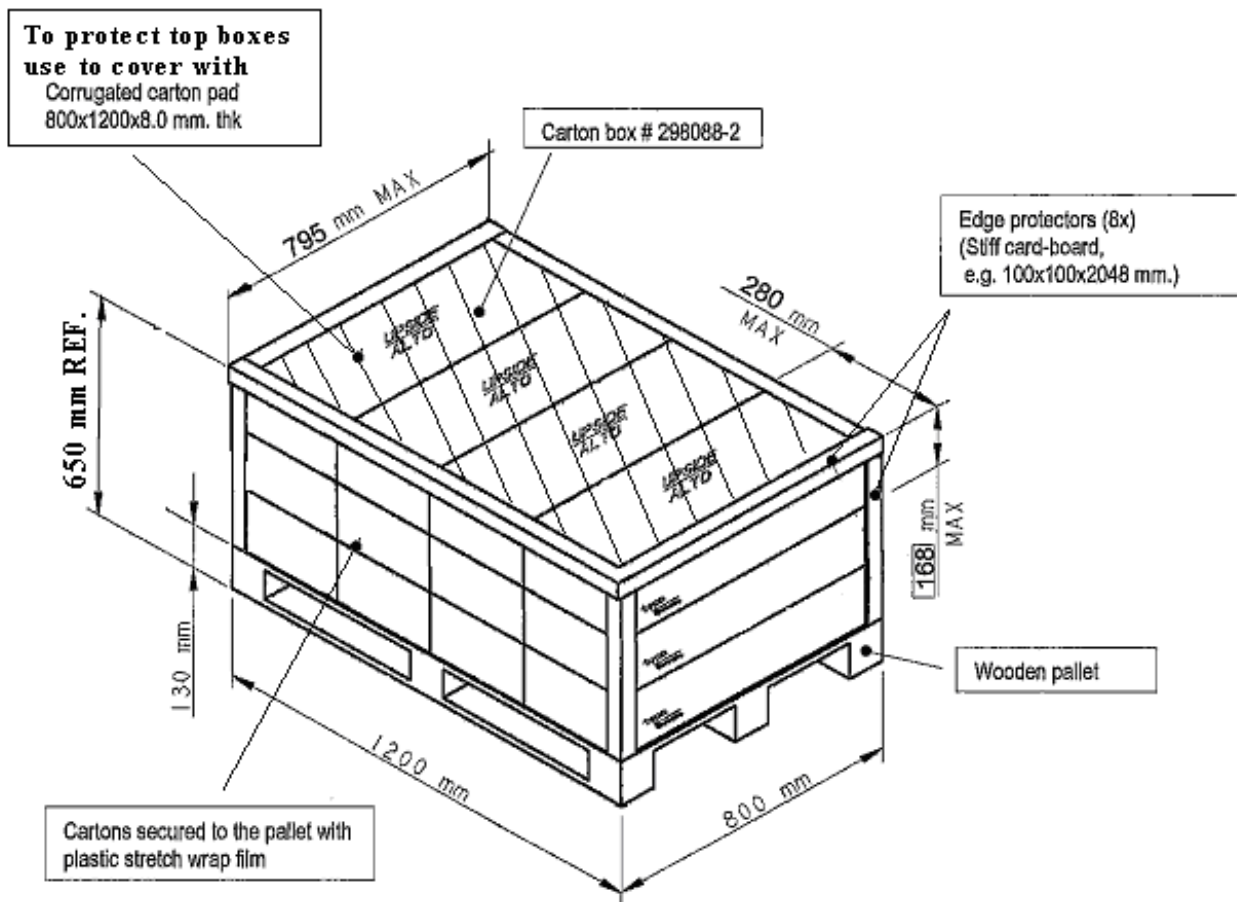
2.4.2 For NON TELAG Shipment (Container)

To ensure an alternative packaging system for NON-TELAG orders, or to deliver products from TELAG to Subsidiary and Customers the following packaging shall be used.

A quantity of 12 boxes max. (3 layers of 4 boxes each) has to be stacked as shown on below picture.

Recommendations:

- The writing “UPSIDE / ALTO” have to be always visible from pallet.
- The self-adhesive label has to be always complied and visible.
- The outer border of the pallet should not be exceeded.
- DO NOT STACK PALLETS!



“ 3 Layers shipping crate”

12 boxes x 12 Kg max = 144 Kg, plus wooden pallet, edge protectors and carton pad = 225 Kg

2.4 (TABLE 1) MONO-SHAPE, TAB. Connector Packaging composition

POS	TYCO Base P/N	Conn. Q.TY / TRAY	CONN. Q.TY / BOX	Q.TY / BOX of TRAY P/N 298132-01	No. of STRIP / TRAY (each strip is composed by 55 connectors)	Q.TY / TRAY of Filler Carton Pad P/N 298154-02	Q.TY / TRAY of END CARTON SPACER P/N 298161-01	MIN. Q.TY / BOX of Filler Carton Pad P/N 298154-01 (a)	MIN. Q.TY / TRAY of INTERNAL DIVIDER P/N 298153-02 (a)
1	284471	2750	11000	4	50	1	2	1	2
2	284472	1375	5500	4	25	1	2	1	2
3	284473	880	3520	4	16	1	2	1	4
4	284474	660	2640	4	12	1	2	1	4
5	284475	550	2200	4	10	1	2	1	2
6	284476	440	1760	4	8	1	2	1	4
7	284477	385	1540	4	7	1	2	1	3
8	284478	330	1320	4	6	1	2	1	4
9	284479	275	1100	4	5	1	2	1	7
10	284480	275	1100	4	5	1	2	1	2

(a) To be considered as minimum suggested q.ty. See para 2.2.4 and 2.3.4 for detailed instructions.