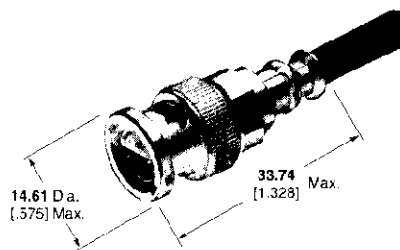
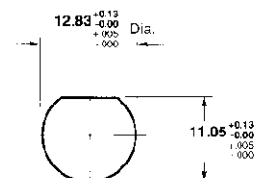
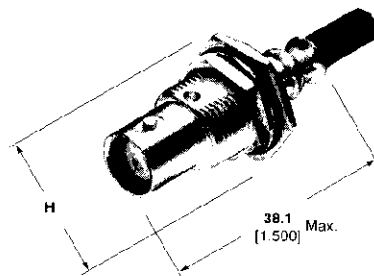


Twin BNC Connectors (Continued)**Plugs**

RG/U Cable	Center Contact Plating	Body Plating	Dielectric	Integral Die Hand Tool	Part No.
108, 108A	Silver	Silver	TEFLON	69667	332225
Belden 9272, 39272	Silver	Nicke	Polypropylene	69667	332225-5
Trompeter TWC-124-2	Silver	Silver	TEFLON	69667	332225-3
ROLM 49D2401 Raychem 7824D013	Silver	Nicke	Polypropylene	69667	332225-6

Bulkhead Jack

Maximum Panel Thickness 3.18 (.125)

Recommended Panel Cutout

H = 17.45 (.687) Max. across flats, 20.32 (.800) Max. across points

RG/U Cable	Center Contact Plating	Body Plating	Dielectric	CERTI-CRIMP Hand Tool with Integral Die	Integral Die Hand Tool	Die Insert for Tools: Hand Tool-69710-1, 626 Pneu. Head 318161-1	Part No.
108, 108A Belden 9272, 89272	Silver	Silver	TEFLON	—	69667	69708	332342