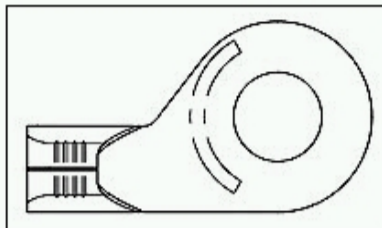
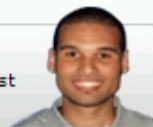


34488 Product Details

Have a Question?

Chat with a Product Information Specialist



34488

TE Internal Number: 34488

Active

[View 3D PDF](#)

Ring and Spade Tongue Terminals

[Always EU RoHS/ELV Compliant \(Statement of Compliance\)](#)

Product Highlights:

- Terminal Shape = Ring Tongue
- Receptacle Style = Offset
- Body Style = SOLISTRAND
- Barrel Type = Closed Barrel
- Wire/Cable Type = Regular Wire

[View all Features](#)

Quick Links

- [Check Pricing & Availability](#)
- [Search for Tooling](#)
- [Product Feature Selector](#)
- [Contact Us About This Product](#)

[Add to My Part List](#) [Request Sample](#) [Find Similar Products](#) [Buy Product](#)

Documentation & Additional Information

Product Drawings:

- [TERMINAL, RING TONGUE, OFFSET, SOLISTRAND, SPECIAL](#) (PDF, English)

Catalog Pages/Data Sheets:

- None Available

Product Specifications:

- None Available

Application Specifications:

- None Available

Instruction Sheets:

- None Available

CAD Files: [\(CAD Format & Compression Information\)](#)

- [2D Drawing](#) (DXF, Version K)
- [3D Model](#) (IGES, Version K)
- [3D Model](#) (STEP, Version K)

[List all Documents](#)

Additional Information:

- [Product Line Information](#)

Related Products:

- [Tooling](#)

Product Features (Please use the Product Drawing for all design activity)

Product Type Features:

- [Terminal Shape](#) = Ring Tongue
- Receptacle Style = Offset
- [Body Style](#) = SOLISTRAND
- [Barrel Type](#) = Closed Barrel
- [Wire/Cable Type](#) = Regular Wire
- [Insulation](#) = No
- [Insulation Support](#) = Non-Insulation Support
- [Stud Diameter \(mm \[in\]\)](#) = 5.00 [0.197]
- Stud Size = 10
- [Shape](#) = RING-048
- [Heavy Duty](#) = No
- [Material](#) = Copper
- [Finish](#) = Tin

Body Related Features:

- [Wire Range \(mm \[AWG\]\)](#) = 3.00-6.00² [12-10]
- Wire Range (CMA) = 5,180 - 13,100
- Barrel I.D. Min. (mm [in]) = 2.49 [0.098]
- Stock Thickness (mm [in]) = 0.99 [0.039]

Industry Standards:

- Government/Industry Qualification = No
- [RoHS/ELV Compliance](#) = RoHS compliant, ELV compliant
- [Lead Free Solder Processes](#) = Not relevant for lead free process
- RoHS/ELV Compliance History = Always was RoHS compliant

Packaging Related Features:

- [Packaging Method](#) = Loose Piece

Other:

- Brand = AMP

[BOOKMARK](#)

Corporate Information

[Who We Are](#)
[Investors](#)
[News Room](#)
[Supplier Portal](#)
[Careers](#)

Quick Links

[Check Distributor Inventory](#)
[Cross Reference](#)
[Find Documents & Drawings](#)
[Product Compliance Support Center](#)
[Site Map](#)

Customer Support

[Email or Chat with Us](#)
[Find a Phone Number](#)
[Search Knowledge Base](#)
[Manage Your Account](#)

Sign up for our eNewsletter

Enter your email address

Follow us on: