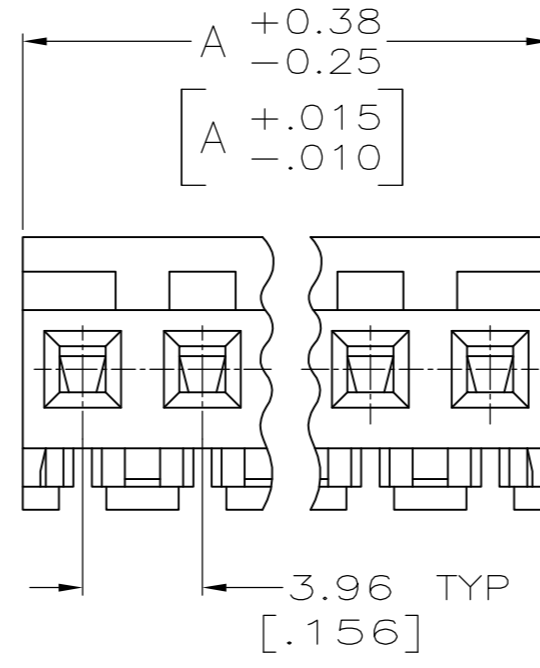
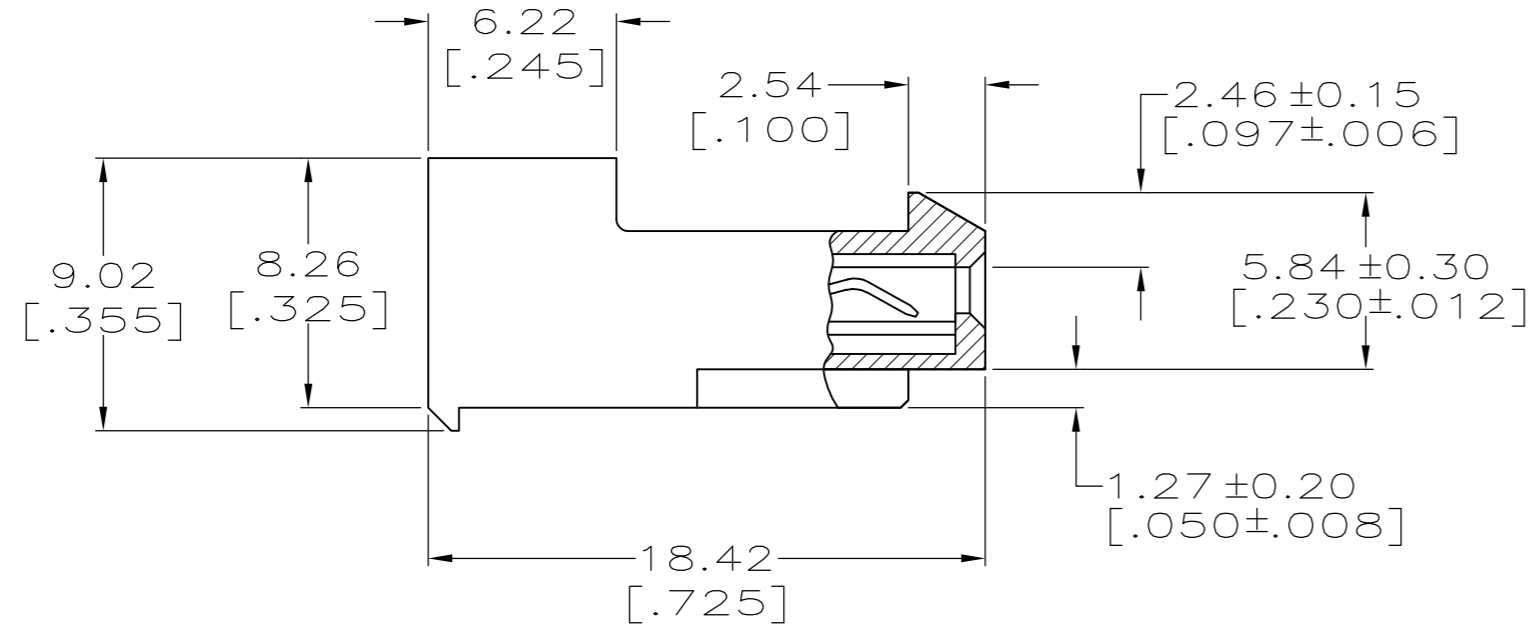
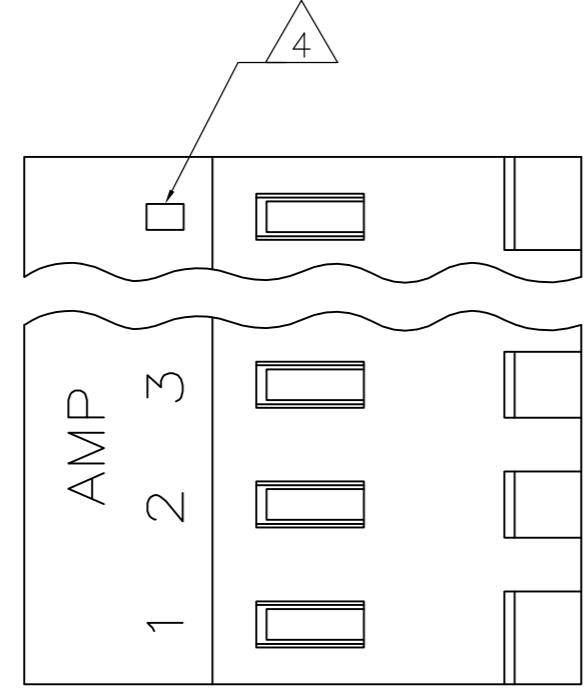


THIS DRAWING IS UNPUBLISHED. RELEASED FOR PUBLICATION
 © COPYRIGHT - By - ALL RIGHTS RESERVED.

LOC	DIST	REVISIONS					
CM	0	P	LTR	DESCRIPTION	DATE	DWN	APVD
		N		REVISED PER ECO-12-007611	30JUL12	KH	SM
		P		ECR-13-008537	16SEP13	M.T	D.Z



1 MATERIAL:
 CONNECTOR - NYLON UL94V-2.
 CONTACTS - 0.30[.012] THICK COPPER ALLOY.
 PLATING - 0.00038[.000015] GOLD THK OR 0.00008[.000003] MIN THK GOLD FLASH OVER 0.00030[.000012] THK PALLADIUM NICKEL, PER TE CONNECTIVITY'S DISCRETION, IN CONTACT AREA. 0.00203[.000080] MIN THICKNESS MATTE TIN IN SLOT AREA FOR 641149-2 THRU 2-641149-4 OR MATTE WHISKER MITIGATED TIN IN SLOT AREA FOR 3-641149-2 THRU 5-641149-4 OVER NICKEL UNDERPLATE.

- 2 CONTACTS ACCEPT 20 AWG WIRE WITH 2.41[.095] MAX INSULATION DIAMETER.
- 3 CONTACTS MUST ACCEPT 1.14±0.03[.045±.001] SQUARE POST AND REMAIN LOCKED IN POSITION.
- 4 IDENTIFICATION NUMBER FOR LAST CIRCUIT MAY NOT APPEAR ON ALL ASSEMBLIES.
- 5 DIMENSIONS IN BRACKETS ARE IN INCHES.
- 6 HOUSING FEATURES ARE: CLOSED END WITH LOCKING RAMP.
- 7 YELLOW COLOR STRIPE ON HOUSING (NOT SHOWN) MAY RUN DOWN BETWEEN RIBS
- 8 NOTE DELETED.
- 9 OBSOLETE PARTS: OBSOLETE CIS STREAMLINING PER D.RENAUD/D.SINISI.

METRIC

	95.10	[3.744]	24	5-641149-4
	91.14	[3.588]	23	5-641149-3
	87.17	[3.432]	22	5-641149-2
	83.21	[3.276]	21	5-641149-1
	79.25	[3.120]	20	5-641149-0
	75.29	[2.964]	19	4-641149-9
	71.32	[2.808]	18	4-641149-8
	67.36	[2.652]	17	4-641149-7
	63.40	[2.496]	16	4-641149-6
	59.44	[2.340]	15	4-641149-5
	55.47	[2.184]	14	4-641149-4
	51.51	[2.028]	13	4-641149-3
	47.55	[1.872]	12	4-641149-2
	43.59	[1.716]	11	4-641149-1
	39.62	[1.560]	10	4-641149-0
	35.66	[1.404]	9	3-641149-9
	31.70	[1.248]	8	3-641149-8
	27.74	[1.092]	7	3-641149-7
	23.77	[.936]	6	3-641149-6
	19.81	[.780]	5	3-641149-5
	15.85	[.624]	4	3-641149-4
	11.89	[.468]	3	3-641149-3
	7.92	[.312]	2	3-641149-2
	95.10	[3.744]	24	2-641149-4
	91.14	[3.588]	23	2-641149-3
	87.17	[3.432]	22	2-641149-2
	83.21	[3.276]	21	2-641149-1
	79.25	[3.120]	20	2-641149-0
	75.29	[2.964]	19	1-641149-9
	71.32	[2.808]	18	1-641149-8
	67.36	[2.652]	17	1-641149-7
	63.40	[2.496]	16	1-641149-6
	59.44	[2.340]	15	1-641149-5
	55.47	[2.184]	14	1-641149-4
	51.51	[2.028]	13	1-641149-3
	47.55	[1.872]	12	1-641149-2
	43.59	[1.716]	11	1-641149-1
	39.62	[1.560]	10	1-641149-0
	35.66	[1.404]	9	641149-9
	31.70	[1.248]	8	641149-8
	27.74	[1.092]	7	641149-7
	23.77	[.936]	6	641149-6
	19.81	[.780]	5	641149-5
	15.85	[.624]	4	641149-4
	11.89	[.468]	3	641149-3
	7.92	[.312]	2	641149-2

SUPERSEDED	TIN-LEAD	95.10	[3.744]	24	2-641149-4
	TIN-LEAD	91.14	[3.588]	23	2-641149-3
	TIN-LEAD	87.17	[3.432]	22	2-641149-2
	TIN-LEAD	83.21	[3.276]	21	2-641149-1
	TIN-LEAD	79.25	[3.120]	20	2-641149-0
	TIN-LEAD	75.29	[2.964]	19	1-641149-9
	TIN-LEAD	71.32	[2.808]	18	1-641149-8
	TIN-LEAD	67.36	[2.652]	17	1-641149-7
	TIN-LEAD	63.40	[2.496]	16	1-641149-6
	TIN-LEAD	59.44	[2.340]	15	1-641149-5
SUPERSEDED	TIN	55.47	[2.184]	14	641149-4
	TIN	51.51	[2.028]	13	641149-3
	TIN	47.55	[1.872]	12	641149-2
	TIN	43.59	[1.716]	11	641149-1
	TIN	39.62	[1.560]	10	641149-0
	TIN	35.66	[1.404]	9	641149-9
	TIN	31.70	[1.248]	8	641149-8
	TIN	27.74	[1.092]	7	641149-7
	TIN	23.77	[.936]	6	641149-6
	TIN	19.81	[.780]	5	641149-5
SUPERSEDED	TIN-LEAD	15.85	[.624]	4	641149-4
	TIN-LEAD	11.89	[.468]	3	641149-3
	TIN-LEAD	7.92	[.312]	2	641149-2

THIS DRAWING IS A CONTROLLED DOCUMENT. DWN B. LEWIS 2-12-91
 CHK R. SWING 2-12-91

DIMENSIONS: mm [INCHES] TOLERANCES UNLESS OTHERWISE SPECIFIED:

0 PLC	± -
1 PLC	± -
2 PLC	± -
3 PLC	± 0.13 [.005]
4 PLC	± -
ANGLES	± -

MATERIAL: 1

PRODUCT SPEC: 108-1051
 APPLICATION SPEC: 114-1020

WEIGHT: -

CUSTOMER DRAWING

TE Connectivity
 MTA-156 CONNECTOR ASSEMBLY, 20 AWG, STANDARD

SIZE: A2 CAGE CODE: 00779 DRAWING NO: 641149 RESTRICTED TO: -

SCALE: 4:1 SHEET: 1 OF 1 REV: P