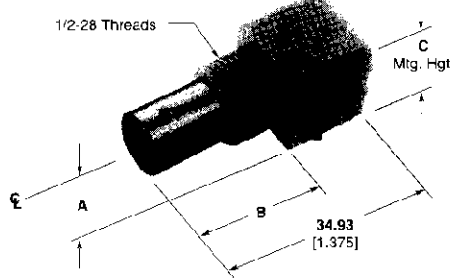


BNC Connectors, 75 Ohm (Continued)

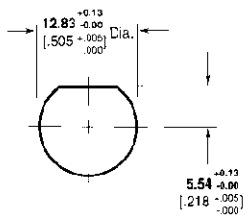
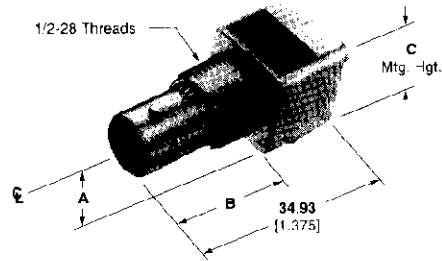
Right-Angle Jacks PC Board/Panel Mount

Outer Shell — Nickel
Dielectric — Polymethylpentene
Lockwasher and Jam Nut see page 74.

VALOX Body

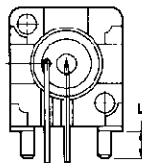


Metal Body



Maximum Panel Thickness 6.1 [0.240]

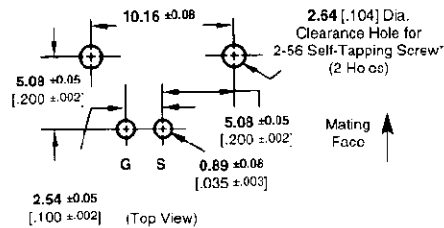
Recommended Panel Cutout



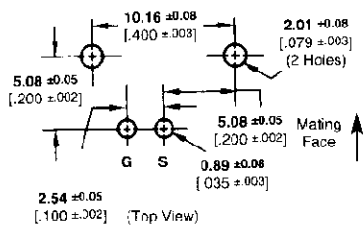
Body Material	Center Contact Plating	Dimensions				Part No.	
		A	B	C	L	Without Mounting Posts	With Mounting Posts
VALOX, White	Gold1	6.91 272	21.08 830	13.88 519	3.48 137	—	413194-1
*VALOX, White (Economy)	Gold1	6.91 272	21.21 835	13.88 519	3.48 137	—	415634-2
VALOX, Black	Gold1	6.91 272	21.08 830	13.88 519	3.48 137	—	413194-2
*VALOX, Black (Economy)	Gold1	6.91 272	21.21 835	13.88 519	3.48 137	—	415634-1
	Gold1	8.59 338	21.21 835	15.88 625	3.48 137	—	415633-1
VALOX, White	Gold2	8.59 338	21.21 835	15.88 625	3.48 137	—	414459-1
Metal	Gold1	8.25 325	20.83 820	15.88 625	2.16 85	—	222092-1
Metal	Gold1	8.25 325	20.83 820	15.88 625	—	222093-1	—
*Metal (Economy)	Gold1	8.25 325	20.83 820	15.88 625	3.48 137	—	414409-1
	Gold1	8.25 325	20.83 820	15.88 625	—	—	414410-1
*Metal with Compliant Posts (Economy)	Gold1	6.91 272	20.83 820	12.70 500	3.48 137	—	415417-1
	Lin-Lead	8.56 337	21.21 835	15.88 625	3.48 137	—	415419-1
Metal	Silver	8.25 325	20.83 820	15.88 625	2.16 85	—	222092-2
Metal	Gold1	8.25 325	20.83 820	15.88 625	3.48 137	—	222092-3
Metal	Gold1	6.91 272	20.83 820	12.70 500	3.48 137	—	414907-1
Metal	Gold1	6.91 272	20.83 820	12.70 500	—	1274072-1	—
*Metal (Economy)	Gold1	6.91 272	20.83 820	12.70 500	3.48 137	—	1274084-1
*Metal (Economy)	Gold1	6.91 272	20.83 820	12.70 500	3.48 137	—	1274084-2**
*High Temp w/ Compliant Posts (Economy)	Galc1	6.91 272	21.21 835	13.88 519	2.79 110	—	415655-1**

Recommended PC Board Layouts

Without Mounting Posts



With Mounting Posts



* Screw for panel thickness of 2.38 [3/32] or greater
Part No. 221108-2.
Screw for panel thickness of less than 2.38 [3/32]
Part No. 221108-4.

*Stamped and formed contact. Phosphor Bronze contact material
**IR Reflow Compatible

Plating:

Gold1 — 0.00076 [0.00030] thick
Gold2 — 0.00127 [0.00050] thick

Note: If an Insulating Bushing is required see part number 330620 and Panel Outout on page 54.