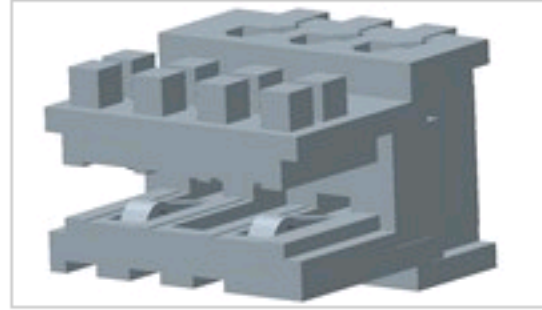


4-284931-5 Product Details

[Share](#) | [Print](#) | [Email](#)


Active

2.5mm & 5mm Centerline Connector System (AMP DUOPLUG)

DUOPLUG Standard, female conn.

4-284931-5

TE Internal Number: 4-284931-5

Product Highlights [View All](#)

- Connector
- 2.50 mm Centerline
- Connector Assembly
- Connector Style = Receptacle
- Contact Type = Socket

- [Pricing & Availability](#)
- [Request Sample](#)
- [Add to My Part List](#)
- [Buy Product through Distributor](#)

Feedback

- [Documents](#)
- [Features](#)**
- [Compliance](#)

Please Note:
Use the Product Drawing for all design activity

Product Type Features	
Product Type	Connector
Connector Type	Connector Assembly
Wire/Cable Type	Stranded
Wire Size (mm ² [AWG])	0.22-0.35 ² [24-22]
Wire Insulation Diameter (mm [in])	1.27 [0.050]
Color	Green

Termination Features	
Termination Method to Wire/Cable	Insulation Displacement Crimp (IDC)

Body Features	
Selectively Loaded	Yes

Contact Features	
Contact Type	Socket
Contact Base Material	Phosphor Bronze
Contact Plating, Mating Area, Material	Tin

Housing Features	
Centerline (mm [in])	2.50 [0.098]
Connector Style	Receptacle
Housing Material	PBT GF

Configuration Features	
Number of Positions	5

Industry Standards	
RoHS/ELV Compliance	RoHS compliant, ELV compliant
Lead Free Solder Processes	Not reviewed for lead free solder process
RoHS/ELV Compliance History	Always was RoHS compliant
UL Flammability Rating	UL 94V-0

Conditions for Usage	
Applies To	Wire/Cable
For Use With	PCB Frame, Header

Operation/Application	
Industry Application	Appliances

Packaging Features	
Packaging Quantity	3,080

Other	
Brand	AMP

Related Products

Not quite the product you're looking for?
[Find Similar Products](#)

[View Part in Product Feature Selector](#)

[Check for Tooling](#)