

CT PB FREE

1. PURPOSE 目的

Define the packaging specification and packaging method of CT PB FREE.

订定 CT PB FREE 产品之包装规格及包装方式.

2. APPLICABLE PRODUCT 适用范围

| TYPE | Part Number | Description | |
|----------------|-------------|---|--|
| BAG PKG | TYPE A | X-292253-X | POST HDR ASSY HORIZONTAL TYPE AMP CT CONN 2MM PITCH |
| | | 1932035-7 | POST HDR ASSY HORIZONTAL SHORT TINE TYPE AMP CT CONN 2MM PITCH |
| | | X-292142-X | POST HDR ASSY HORIZONTAL TYPE AMP CT CONN 2MM PITCH |
| | TYPE B | X-292251-X | POST HDR ASSY (BOX-V POLARIZE TYPE) AMP CT CONN 2MM PITCH |
| | | X-292145-X | POST HDR ASSY(V) WITHOUT KINK AMP CT CONN 2MM PITCH |
| | | 1932811-3 | CT P/HDR ASSY V 3P W/O KINK NA LONG POST |
| | | X-292131-X | POST HDR ASSY(BOX-V POLARIZE TYPE)AMP CT CONN 2MM PITCH |
| | TYPE C | X-292250-X | POST HDR ASSY BOS-H DIP AMP CT CONN 2MM PITCH |
| | | X-292130-X | POST HDR ASSY(BOX-H TYPE) AMP CT CONN 2MM PITCH |
| | | X-292129-X | POST HDR ASSY(BOX-H DIP)AMP CT CONN 2MM PITCH |
| | TYPE D | X-292161-X | POST HDR ASSY VERTICAL TYPE AMP CT CONN 2MM PITCH |
| | | X-292146-X | POST HDR ASSY V-TYPE GF VERSION AMP CT CONN 2MM PITCH |
| | | X-292144-X | POST HDR ASSY VERTICAL TYPE AMP CT CONN 2MM PITCH |
| | TYPE E | X-292136-X | POST HEADER ASSY BOX-V AMP CT CONN 2MM PITCH |
| | | X-292135-X | POST HEADER ASSY SHORT TINE TYPE AMP CT CONN 2MM PITCH |
| | | X-292134-X | POST HEADER ASSY (BOX-V) GOLD PLT TYPE AMP CT CONN 2MM PITCH |
| | | X-292133-X | POST HEADER ASSY (BOX-V WITHOUT KINK)AMP CT CONN 2MM PITCH |
| | | X-292132-X | POST HEADER ASSY (BOX-V DIP)AMP CT CONN 2MM PITCH |
| | | 1-292387-2 | POST HEADER ASSY (BOX-V WITHOUT KINK)AMP CT CONN 2MM PITCH |
| | TYPE F | X-292143-X | POST HDR ASSY(H) WITHOUT KINK AMP CT CONN 2MM PITCH |
| | TYPE G | 292204-X | ASSY (6P&8P) FOR CT CARD EDGE CONNECTOR |
| TYPE H | X-292112-X | 2MM PITCH MT REC HSG ASSY FOR CANON AMP CT CONN | |
| TYPE I | X-292389-3 | POST HEADER ASSY-VERTICAL TYPE AMP CT CONN. 2mm PITCH | |

DR
Sam Wu

CHK
Jom Zheng

APVD
Ansin Yang

2. APPLICABLE PRODUCT 适用范围

| TYPE | | Part Number | Description |
|---------------|--------|-------------|--|
| SLOT CASE PKG | TYPE J | X-292297-X | POST HEADER ASSY WITH BOSS(VERTICAL)CT DOUBLE ROW CONN. |
| | | X-292252-X | POST HDR ASSY (VERTICAL) AMP CT CONN 2MM PITCH |
| | | X-292141-X | POST HDR ASSY WITH BOSS(VERTICAL) CT DOUBLE ROW CONN. |
| | | X-1932156-X | POST HEADER ASSEMBLY WITH BOSS(VERTICAL) CT DOUBLE ROW CONN |
| | | X-292139-X | POST HDR ASSY(VERTICAL)CT DOUBLE ROW CONN(16P-30P) |
| | TYPE K | X-292138-X | POST HEADER ASSY (HORIZONTAL)AMP CT CONN 2MM PITCH |
| TUBE PKG | TYPE L | X-292261-X | TUBE PACKING AMP CT CONN FOR CANON POST HDR ASSY(STD-H DIP) |
| | | X-292168-X | TUBE PACKING AMP CT CONN POST HDR ASSY(STD-H DIP) WITHOUT KINK |
| | | X-292167-X | TUBE PACKING AMP CT CONN POST HDR ASSY(STD-H DIP) |
| | TYPE M | X-292217-X | TUBE PACKING AMP CT CONN FOR CANON POST HDR ASSY(STD-V DIP) |
| | | X-292170-X | TUBE PACKING AMP CT CONN POST HDR ASSY(STD-V DIP) WITHOUT KINK |
| | | X-292169-X | TUBE PACKING AMP CT CONN POST HDR ASSY(STD-V DIP) |
| | TYPE N | X-292165-X | TUBE PACKING AMP CT CONN POST HDR ASSY(STD-V DIP) WITHOUT KINK |
| | | X-292166-X | TUBE PACKING AMP CT CONN FOR CANON POST HDR ASSY(STD-V DIP) |
| | TYPE O | X-292260-X | TUBE PACKING AMP CT CONN FOR CANON POST HDR ASSY(BOX-H DIP) |
| | | X-292164-X | TUBE PACKING AMP CT CONN POST HDR ASSY(STD-V DIP) |

3. PACKAGING MATERIAL 包装材料

BAG PKG

| TYPE | Package | Part No. | Description |
|-------------|---------|------------|--------------|
| TYPE A~G. I | INNER | 5-720994-6 | POLY BAG |
| | MIDDLE | 720992-1 | FOAM PAD |
| | | 1533271-1 | INNER BOX |
| | OUTER | 292906-9 | SHIPPING BOX |
| TYPE H | INNER | 5-720994-6 | POLY BAG |
| | MIDDLE | 1533271-1 | INNER BOX |
| | OUTER | 292906-8 | SHIPPING BOX |

| | Inner | Middle | Outer |
|---------|-----------|----------|----------|
| LABEL | 623865-4 | 623865-4 | 623865-5 |
| SEALING | Heat-seal | - | Tape |

SLOT CASE PKG

| TYPE | Package | Part No. | Description |
|--------|---------|------------|--------------------------|
| TYPE J | Inner | 1-912056-4 | P.S SLOT CASE FOR V TYPE |
| | Middle | 110455-2 | BUBBLE PAD |
| | Outer | 4-912011-7 | C-15 CARTON |

3. PACKAGING MATERIAL 包装材料

SLOT CASE PKG

| TYPE | Package | Part No. | Description |
|--------|---------|------------|--------------------------|
| TYPE K | Inner | 1-912056-5 | P.S SLOT CASE FOR H TYPE |
| | Middle | 110455-2 | BUBBLE PAD |
| | Outer | 4-912011-7 | C-15 CARTON |

| | Inner | Middle | Outer |
|---------|----------|--------|----------|
| LABEL | 623865-4 | - | 623865-5 |
| SEALING | Tape | - | Tape |

TUBE PKG

| TYPE | Package | Part No. | Description |
|---------|---------|--------------|--------------------------|
| TYPE L | INNER | 5-720995-7 | TUBE |
| | | 720997-3 | PLUG |
| | MIDDLE | 2-720998-0 | BAG |
| | OUTER | 3-912060-6 | AIR CAP |
| | | 97107-1 | SHIPPING BOX |
| TYPE M | INNER | 9-720996-9 | TUBE |
| | | 720997-1 | PLUG |
| | MIDDLE | 2-720998-0 | BAG |
| | OUTER | 3-912060-6 | AIR CAP |
| | | 97107-1 | SHIPPING BOX |
| TYPE N | INNER | 8-720998-8 | TUBE |
| | | 97000-1 | PLUG |
| | MIDDLE | 1533282-6 | BAG(Only for x-292166-x) |
| | | 2-720998-0 | BAG |
| | OUTER | 3-912060-6 | AIR CAP |
| 97107-1 | | SHIPPING BOX | |
| TYPE O | INNER | 6-720999-1 | TUBE |
| | | 97001-1 | PLUG |
| | MIDDLE | 2-720998-0 | BAG |
| | OUTER | 3-912060-6 | AIR CAP |
| | | 97107-1 | SHIPPING BOX |

| | Inner | Middle | Outer |
|---------|-------|----------|----------|
| LABEL | - | 623865-4 | 623865-5 |
| SEALING | - | Tape | Tape |

4. PACKAGING QUANTITY 包装数量

For TYPE A : 292253、292142、1932035-7 系列

| Part Number 产品编号 | Position 位数 | Each/polybag 件/袋 | Each/MCM box 件/盒 | Each/shipper box 件/箱 |
|---|----------------|---------------------|---------------------|-------------------------|
| 292253-2 2, 4, 6-292253-2 8-292142-2 | 2 | 1,000 | 6,000 | 24,000 |
| 292253-3 2, 4, 6-292253-3 8-292142-3 | 3 | 1,000 | 5,000 | 20,000 |
| 292253-4 2, 4, 6-292253-4 8-292142-4 | 4 | 1,000 | 5,000 | 20,000 |
| 292253-5 2, 4, 6-292253-5 8-292142-5 | 5 | 1,000 | 4,000 | 16,000 |
| 292253-6 2, 4, 6-292253-6 8-292142-6 | 6 | 500 | 2,500 | 10,000 |
| 292253-7 1932035-7 2, 4, 6-292253-7 8-292142-7 | 7 | 500 | 2,500 | 10,000 |
| 292253-8 2, 4, 6-292253-8 8-292142-8 | 8 | 500 | 2,500 | 10,000 |
| 292253-9 2, 4, 6-292253-9 8-292142-9 | 9 | 500 | 2,000 | 8,000 |
| 1, 3, 5, 7-292253-0 9-292142-0 | 10 | 500 | 2,000 | 8,000 |
| 1, 3, 5, 7-292253-1 9-292142-1 | 11 | 500 | 2,000 | 8,000 |
| 1, 3, 5, 7-292253-2 9-292142-2 | 12 | 500 | 1,500 | 6,000 |
| 1, 3, 5, 7-292253-3 9-292142-3 | 13 | 500 | 1,500 | 6,000 |
| 1, 3, 5, 7-292253-4 9-292142-4 | 14 | 500 | 1,500 | 6,000 |
| 1, 3, 5, 7-292253-5 9-292142-5 | 15 | 500 | 1,000 | 4,000 |

4. PACKAGING QUANTITY 包装数量
For TYPE B : 292251、292145、292131、1932811 系列

| Part Number 产品编号 | Pos. 位数 | Each/polybag 件/袋 | Each/MCM box 件/盒 | Each/shipper box 件/箱 |
|---|------------|---------------------|---------------------|-------------------------|
| 292145-2 2, 4, 6, 8-292145-2 292251-2 2-292251-2 8-292131-2 | 2 | 1,000 | 8,000 | 32,000 |
| 292145-3 2, 4, 6, 8-292145-3 292251-3 1932811-3 8-292131-3 | 3 | 1,000 | 6,000 | 24,000 |
| 292145-4 2, 4, 6, 8-292145-4 292251-4 2-292251-4 8-292131-4 | 4 | 1,000 | 5,000 | 20,000 |
| 292145-5 2, 4, 6, 8-292145-5 292251-5 8-292131-5 | 5 | 1,000 | 4,000 | 16,000 |
| 292145-6 2, 4, 6, 8-292145-6 292251-6 8-292131-6 | 6 | 500 | 3,000 | 12,000 |
| 292145-7 2, 4, 6, 8-292145-7 292251-7 8-292131-7 | 7 | 500 | 2,500 | 10,000 |
| 292145-8 2, 4, 6, 8-292145-8 292251-8 8-292131-8 | 8 | 500 | 2,500 | 10,000 |
| 292145-9 2, 4, 6, 8-292145-9 292251-9 8-292131-9 | 9 | 500 | 2,000 | 8,000 |
| 1, 3, 5, 7, 9-292145-0 1-292251-0 9-292131-0 | 10 | 500 | 2,000 | 8,000 |
| 1, 3, 5, 7, 9-292145-1 1-292251-1 9-292131-1 | 11 | 500 | 2,000 | 8,000 |

4. PACKAGING QUANTITY 包装数量

| Part Number 产品编号 | Pos. 位数 | Each/polybag 件/袋 | Each/MCM box 件/盒 | Each/shipper box 件/箱 |
|--|------------|---------------------|---------------------|-------------------------|
| 1, 3, 5, 7, 9-292145-2 1-292251-2 9-292131-2 | 12 | 500 | 1,500 | 6,000 |
| 1, 3, 5, 7, 9-292145-3 1-292251-3 9-292131-3 | 13 | 500 | 1,500 | 6,000 |
| 1, 3, 5, 7, 9-292145-4 1-292251-4 9-292131-4 | 14 | 500 | 1,500 | 6,000 |
| 1, 3, 5, 7, 9-292145-5 1-292251-5 9-292131-5 | 15 | 500 | 1,500 | 6,000 |

For TYPE C : 292250、292130、292129 系列

| Part Number 产品编号 | Pos. 位数 | Each/polybag 件/袋 | Each/MCM box 件/盒 | Each/shipper box 件/箱 |
|--|------------|---------------------|---------------------|-------------------------|
| 292250-2 2, 4, 6-292250-2 8-292129-2 | 2 | 1,000 | 5,000 | 20,000 |
| 292250-3 2, 4, 6-292250-3 292130-3 4-292130-3 8-292129-3 | 3 | 1,000 | 4,000 | 16,000 |
| 292250-4 2, 4, 6-292250-4 292130-4 4-292130-4 8-292129-4 | 4 | 1,000 | 4,000 | 16,000 |
| 292250-5 2, 4, 6-292250-5 292130-5 8-292129-5 | 5 | 1,000 | 4,000 | 16,000 |
| 292250-6 2, 4, 6-292250-6 292130-6 8-292129-6 | 6 | 500 | 2,500 | 10,000 |
| 292250-7 2, 4, 6-292250-7 8-292129-7 | 7 | 500 | 2,000 | 8,000 |

4. PACKAGING QUANTITY 包装数量

| Part Number 产品编号 | Pos. 位数 | Each/polybag 件/袋 | Each/MCM box 件/盒 | Each/shipper box 件/箱 |
|--|------------|---------------------|---------------------|-------------------------|
| 292250-8 2, 4, 6-292250-8 8-292129-8 | 8 | 500 | 2,000 | 8,000 |
| 292250-9 2, 4, 6-292250-9 292130-9 8-292129-9 | 9 | 500 | 2,000 | 8,000 |
| 1, 3, 5, 7-292250-0 1-292130-0 9-292129-0 | 10 | 200 | 1,000 | 4,000 |
| 1, 3, 5, 7-292250-1 9-292129-1 | 11 | 200 | 1,000 | 4,000 |
| 1, 3, 5, 7-292250-2 9-292129-2 | 12 | 200 | 1,000 | 4,000 |
| 1, 3, 5, 7-292250-3 9-292129-3 | 13 | 200 | 1,000 | 4,000 |
| 1, 3, 5, 7-292250-4 9-292129-4 | 14 | 200 | 1,000 | 4,000 |
| 1, 3, 5, 7-292250-5 1-292130-5 9-292129-5 | 15 | 200 | 1,000 | 4,000 |

For TYPE D : 292161 、 292146 、 292144 系列

| Part Number 产品编号 | Pos. 位数 | Each/polybag 件/袋 | Each/MCM box 件/盒 | Each/shipper box 件/箱 |
|--|------------|---------------------|---------------------|-------------------------|
| 292161/46-2 2, 4, 6, 8-292161-2 8-292144-2 | 2 | 1,000 | 6,000 | 24,000 |
| 292161-3 2, 4, 6, 8, 9-292161-3 8-292144-3 | 3 | 1,000 | 5,000 | 20,000 |
| 292161/46-4 2, 4, 6, 8-292161-4 8-292144-4 | 4 | 1,000 | 5,000 | 20,000 |

4. PACKAGING QUANTITY 包装数量

| Part Number 产品编号 | Pos. 位数 | Each/polybag 件/袋 | Each/MCM box 件/盒 | Each/shipper box 件/箱 |
|--|------------|---------------------|---------------------|-------------------------|
| 292161-5 2, 4, 6, 8-292161-5 8-292144-5 | 5 | 1,000 | 5,000 | 20,000 |
| 292161-6 2, 4, 6, 8-292161-6 8-292144-6 | 6 | 500 | 3,000 | 12,000 |
| 292161-7 2, 4, 6, 8, 9-292161-7 8-292144-7 | 7 | 500 | 2,500 | 10,000 |
| 292161/46-8 2, 4, 6, 8-292161-8 8-292144-8 | 8 | 500 | 2,500 | 10,000 |
| 292161/46-9 2, 4, 6, 8-292161-9 8-292144-9 | 9 | 500 | 2,500 | 10,000 |
| 1, 3, 5, 7, 9-292161-0 1-292146-0 9-292144-0 | 10 | 500 | 2,500 | 10,000 |
| 1, 3, 5, 7, 9-292161-1 1-292146-1 9-292144-1 | 11 | 500 | 2,000 | 8,000 |
| 1, 3, 5, 7, 9-292161-2 9-292144-2 | 12 | 500 | 2,000 | 8,000 |
| 1, 3, 5, 7-292161-3 9-292144-3 | 13 | 500 | 2,000 | 8,000 |
| 1, 3, 5, 7-292161-4 9-292144-4 | 14 | 500 | 2,000 | 8,000 |
| 1, 3, 5, 7-292161-5 9-292144-5 | 15 | 500 | 2,000 | 8,000 |

For TYPE E : 292136 、 292135 、 292134 、 292133 、 292132 系列

| Part Number 产品编号 | Position 位数 | Each/polybag 件/袋 | Each/MCM box 件/盒 | Each/shipper box 件/箱 |
|----------------------------------|----------------|---------------------|---------------------|-------------------------|
| 292132/3/4-2 2, 4, 6-292132-2 | 2 | 1,000 | 5,000 | 20,000 |

4. PACKAGING QUANTITY 包装数量
For TYPE E : 292136、292135、292134、292133、292132、292387 系列

| Part Number 产品编号 | Position 位数 | Each/polybag 件/袋 | Each/MCM box 件/盒 | Each/shipper box 件/箱 |
|---|----------------|---------------------|---------------------|-------------------------|
| 292132/3/4/5-3 2, 4, 6-292132/3-3 2-292135-3 | 3 | 1,000 | 5,000 | 20,000 |
| 2, 4, 6-292132-4 292132/3/4-4 | 4 | 1,000 | 4,000 | 16,000 |
| 2, 4, 6-292132-5 292132/3/4-5 | 5 | 1,000 | 4,000 | 16,000 |
| 2, 4, 6, 8-292132-6 292132/3/4-6 | 6 | 1,000 | 4,000 | 16,000 |
| 2, 4, 6, 8-292132-7 292132/3/4/6-7 | 7 | 500 | 2,000 | 8,000 |
| 2, 4, 6, 8-292132-8 2-292136-8 292132/3/4/6-8 | 8 | 500 | 2,000 | 8,000 |
| 2, 4, 6, 8-292132-9 292132/3/4-9 | 9 | 500 | 2,000 | 8,000 |
| 1, 3, 5, 7-292132-0 1-292133/4/6-0 | 10 | 500 | 2,000 | 8,000 |
| 1, 3, 5, 7-292132-1 1-292133/4-1 | 11 | 200 | 1,000 | 4,000 |
| 1, 3, 5, 7-292132-2 1-292133/4-2 1-292387-2 1-292135-2 | 12 | 200 | 1,000 | 4,000 |
| 1, 3, 5, 7-292132-3 1-292133/4/6-3 | 13 | 200 | 1,000 | 4,000 |
| 1, 3, 5, 7-292132-4 1-292133/4/6-4 | 14 | 200 | 1,000 | 4,000 |
| 1, 3, 5, 7-292132-5 1-292133/4-5 | 15 | 200 | 1,000 | 4,000 |

4. PACKAGING QUANTITY 包装数量

For TYPE F : 292143 系列

| Part Number 产品编号 | Pos. 位数 | Each/polybag 件/袋 | Each/MCM box 件/盒 | Each/shipper box 件/箱 |
|---------------------------------|------------|---------------------|---------------------|-------------------------|
| 292143-2 2, 4, 6, 8-292143-2 | 2 | 1,000 | 8,000 | 32,000 |
| 292143-3 2, 4, 6, 8-292143-3 | 3 | 1,000 | 6,000 | 24,000 |
| 292143-4 2, 4, 6, 8-292143-4 | 4 | 1,000 | 5,000 | 20,000 |
| 292143-5 2, 4, 6, 8-292143-5 | 5 | 1,000 | 4,000 | 16,000 |
| 292143-6 2, 4, 6, 8-292143-6 | 6 | 500 | 3,000 | 12,000 |
| 292143-7 2, 4, 6, 8-292143-7 | 7 | 500 | 2,500 | 10,000 |
| 292143-8 2, 4, 6, 8-292143-8 | 8 | 500 | 2,500 | 10,000 |
| 292143-9 2, 4, 6, 8-292143-9 | 9 | 500 | 2,000 | 8,000 |
| 1, 3, 5, 7, 9-292143-0 | 10 | 500 | 2,000 | 8,000 |
| 1, 3, 5, 7, 9-292143-1 | 11 | 500 | 2,000 | 8,000 |
| 1, 3, 5, 7, 9-292143-2 | 12 | 500 | 1,500 | 6,000 |
| 1, 3, 5, 7, 9-292143-3 | 13 | 500 | 1,500 | 6,000 |
| 1, 3, 5, 7, 9-292143-4 | 14 | 500 | 1,500 | 6,000 |
| 1, 3, 5, 7, 9-292143-5 | 15 | 500 | 1,000 | 4,000 |

For TYPE G : 292204 系列

| Part Number 产品编号 | Pos. 位数 | Each/polybag 件/袋 | Each/MCM box 件/盒 | Each/shipper box 件/箱 |
|---------------------|------------|---------------------|---------------------|-------------------------|
| 292204-1 | 6 | 100 | 500 | 2,000 |
| 292204-2 | 8 | 100 | 500 | 2,000 |

4. PACKAGING QUANTITY 包装数量

For TYPE I: 292389 系列

| Part Number 产品编号 | Pos. 位数 | Each/polybag 件/袋 | Each/MCM box 件/盒 | Each/shipper box 件/箱 |
|------------------------|------------|---------------------|---------------------|-------------------------|
| 292389-3 2-292389-3 | 3 | 500 | 4,500 | 18,000 |

For TYPE H: 292112 系列

| Part Number 产品编号 | Pos. 位数 | Each/polybag 件/袋 | Each/MCM box 件/盒 | Each/shipper box 件/箱 |
|---------------------|------------|---------------------|---------------------|-------------------------|
| 8-292112-2 | 2 | 1,000 | 16,000 | 32,000 |
| 8-292112-3 | 3 | 1,000 | 14,000 | 28,000 |
| 8-292112-4 | 4 | 1,000 | 12,000 | 24,000 |
| 8-292112-5 | 5 | 1,000 | 10,000 | 20,000 |
| 8-292112-6 | 6 | 1,000 | 10,000 | 20,000 |
| 8-292112-7 | 7 | 1,000 | 8,000 | 16,000 |
| 8-292112-8 | 8 | 1,000 | 8,000 | 16,000 |
| 8-292112-9 | 9 | 1,000 | 5,000 | 10,000 |
| 9-292112-0 | 10 | 1,000 | 5,000 | 10,000 |
| 9-292112-1 | 11 | 1,000 | 4,000 | 8,000 |
| 9-292112-2 | 12 | 1,000 | 4,000 | 8,000 |
| 9-292112-3 | 13 | 1,000 | 4,000 | 8,000 |
| 9-292112-4 | 14 | 1,000 | 4,000 | 8,000 |
| 9-292112-5 | 15 | 1,000 | 4,000 | 8,000 |

FOR TYPE J: 292297、292252、292141、292139、1932156 系列

| Part Number 产品编号 | Position | pcs/slot case | pcs/carton |
|--|----------|---------------|------------|
| 1-292252-6 1-292141-6 7-292139/2297-6 | 16 | 200 | 2,800 |
| 1-292141-8 1-1932156-8 7-292139/2297-8 | 18 | 180 | 2,520 |
| 2-292252-0 2-292141-0 8-292139/2297-0 | 20 | 170 | 2,380 |

4. PACKAGING QUANTITY 包装数量

| Part Number 产品编号 | Position | pcs/slot case | pcs/carton |
|--|----------|---------------|------------|
| 2-292252-2 2-292141-2 2-1932156-2 8-292139/2297-2 | 22 | 160 | 2,240 |
| 2-292252-4 2-292141-4 8-292139/2297-4 | 24 | 150 | 2,100 |
| 2-292252-6 2-292141-6 8-292139/2297-6 | 26 | 140 | 1,960 |
| 2-292252-8 2-292141-8 8-292139/2297-8 | 28 | 130 | 1,820 |
| 3-292252-0 3-292141-0 9-292139/2297-0 | 30 | 120 | 1,680 |

FOR TYPE K: 292138 系列

| 产品编号 | Position | pcs/slot case | pcs/carton |
|--------------------------|----------|---------------|------------|
| 1-292138-6 | 16 | 200 | 2,800 |
| 1-292138-8 | 18 | 180 | 2,520 |
| 2-292138-0 4-292138-0 | 20 | 170 | 2,380 |
| 2-292138-2 4-292138-2 | 22 | 160 | 2,240 |
| 2-292138-4 | 24 | 150 | 2,100 |
| 2-292138-6 | 26 | 140 | 1,960 |
| 2-292138-8 | 28 | 130 | 1,820 |
| 3-292138-0 | 30 | 120 | 1,680 |

FOR TYPE L~N: 292261、292260、292217、292170、292169、292168、292167、292166、292165、292164 系列

| Part Number | pos. | pcs/tube | pcs/bag | pcs/box |
|--|------|----------|---------|---------|
| 8-292217/60/61-2 292164/65/66/67/68/69/70-2 2,4,6,8-292168/70-2 2,4,6-292165-2/2-292164-2 | 2 | 1/80 | 1/4000 | 1/12000 |
| 8-292217/60-3 292164/65/66/68/69/70-3 2,4,6,8-292168/70-3 2,4,6-292165-3/2-292164-3 | 3 | 1/60 | 1/3000 | 1/9000 |

4. PACKAGING QUANTITY 包装数量

| Part Number | pos. | pcs/tube | pcs/bag | pcs/box |
|---|------|----------|---------|---------|
| 8-292217/60-4 292164/65/66/68/69/70-4 2,4,6,8-292168/70-4 2,4,6-292165-4/2-292164-4 | 4 | 1/45 | 1/2250 | 1/6750 |
| 8-292217/60-5 292164/65/66/68/69/70-5 2,4,6,8-292168/70-5 2,4,6-292165-5/2-292164-5 | 5 | 1/40 | 1/2000 | 1/6000 |
| 8-292217/60-6 292164/65/66/68/69/70-6 2,4,6,8-292168/70-6 2,4,6-292165-6/2-292164-6 | 6 | 1/30 | 1/1500 | 1/4500 |
| 8-292217/60-7 292164/65/66/68/69/70-7 2,4,6,8-292168/70-7 2,4,6-292165-7/2-292164-7 | 7 | 1/30 | 1/1500 | 1/4500 |
| 8-292217/60-8 292164/65/66/68/69/70-8 2,4,6,8-292168/70-8 2,4,6-292165-8/2-292164-8 | 8 | 1/25 | 1/1250 | 1/3750 |
| 8-292217/60-9 292164/65/66/68/69/70-9 2,4,6,8-292168/70-9 2,4,6-292165-9/2-292164-9 | 9 | 1/20 | 1/1000 | 1/3000 |
| 9-292217/60-0 1,3,5,7,9-292168/70-0 1,3,5,7-292165-0 1-292166/69-0 1,3-292164-0 | 10 | 1/20 | 1/1000 | 1/3000 |
| 9-292217/60-1 1,3,5,7,9-292168/70-1 1-292166/69-1 1,3,5,7-292165-1 1,3-292164-1 | 11 | 1/20 | 1/1000 | 1/3000 |
| 9-292217/60/61-2 1,3,5,7,9-292168/70-2 1-292166/67/69-2 1,3,5,7-292165-2 1,3-292164-2 | 12 | 1/15 | 1/750 | 1/2250 |
| 9-292260-3 1-292164/66/68/70-3 1,3,5,7-292165-3 | 13 | 1/15 | 1/750 | 1/2250 |

4. PACKAGING QUANTITY 包装数量

| Part Number | pos. | pcs/tube | pcs/bag | pcs/box |
|--|------|----------|---------|---------|
| 9-292260-4 1-292164/66/68/70-4 1,3,5,7-292165-4 | 14 | 1/15 | 1/750 | 1/2250 |
| 9-292260-5 1-292170-5 1-292168-5 1-292166-5 1,3,5,7-292165-5 1-292164-5 | 15 | 1/15 | 1/750 | 1/2250 |

5. PACKING METHOD 包装方法

For TYPE A~G. I (请参照包装示意图 1, page 20 of 22) :

5.1. Depending upon position, place on appropriate quantities of parts into polybag & heat seal it.
根据位数将一定数量(详见4中包装数量)的产品放入塑料袋中并热封其开口。

5.2. Place an inner label on the middle of a polybag.
在一个袋子的中间贴上内标签。

5.3. Place an inner box.
折叠好一个内盒。

5.4. Depending upon position, place on appropriate of polybags into inner box.
根据位数将一定数量(详见4包装数量)的塑料袋放入内盒中。

Only for 292251 、 292145 、 292143 、 292131 、 292389 系列:

在内盒的底部放一块海绵, 然后:

- (1). 如果4中规定放2~4包产品入内盒, 则将产品并排放入后再用适当的海绵放在产品的上面以填充空隙。
- (2). 如果4中规定放5包产品入内盒, 则将3包产品并排放入内盒后放一块海绵再将2包产品并排放入内盒, 然后再用适当的海绵放在产品的上面以填充空隙。
- (3). 如果4中规定放9包产品入内盒, 则将5包产品并排放入内盒后放一块海绵再将4包产品并排放入内盒, 然后再用适当的海绵放在产品的上面以填充空隙。
- (4). 如果4中规定放6或8包产品入内盒, 则平均分两层放, 每层并排放入, 层与层之间放一块海绵, 然后再用适当的海绵放在最上面以填充空隙。

Only for 292253 、 292161 、 292146 、 292144 、 292142 1932035-7 系列:

在内盒的底部放二块海绵, 然后根据4中规定将2~6包产品并排放入内盒中, 再用适当的海绵放在产品的上面以填充空隙。

5. PACKING METHOD 包装方法

Only for 292250、292136、292135、292134、292133、292132、292130、292129、292204、292387：

在内盒的底部放一块海绵，然后根据4中规定将4或5包产品并排放入内盒中，再用适当的海绵放在产品的上面以填充空隙。

5.5. Fill in void with propriety foam.

若内盒有空隙，则用适当的海绵垫填充，保证产品在内盒不易晃动。

5.6. Tuck closed top flap of inner box & a middle label to the designated area of it.

合上盒盖，在内盒外侧指定位置贴上中标签。

5.7. Set up a box & secure bottom flaps with tape.

折叠好一个包装箱，并用胶带封好箱底。

5.8. Place 4 inner boxes full of products into the shipping box.

将四个内盒放入外箱中。

注：四个内盒放入外箱的方向要一致。

5.9. Seal the box with tape. And place product identification label in "product id" marked on box.

用胶带封箱，在箱外印有“PRODUCT ID”标识处贴上外标签。

For TYPE H (请参照包装示意图 1,page 20 of 22) :

5.1. Place an inner label on the middle of a polybag.

在一个袋子的中间贴上内标签。

5.2. Depending upon position, place on appropriate quantities of parts into polybag & heat seal it.

根据位数将一定数量(详见4中包装数量)的产品放入塑料袋中并热封其开口。

5.3. Place an inner box.

折叠好一个内盒。

5.4. Depending upon position, place on appropriate of polybags into inner box.

根据位数将一定数量(详见4包装数量)的塑料袋放入内盒中。

5.5. Tuck closed top flap of inner box & a middle label to the designated area of it.

合上盒盖，在内盒外侧指定位置贴上中标签。

5. PACKING METHOD 包装方法

5.6. Set up a box & secure bottom flaps with tape.

折叠好一个包装箱，并用胶带封好箱底。

5.7. Place 2 inner boxes full of products into the shipping box.

将二个内盒放入外箱中。

注：两个内盒放入外箱的方向要一致。

5.8. Seal the box with tape. And place product identification label in "product id" marked on box.

用胶带封箱，在箱外印有“PRODUCT ID”标识处贴上外标签。

For TYPE J、K (请参照包装示意图 2,page 21 of 22) :

5.1. Put specified quantity of product in the slot grooves of specified p.s slot case.

按4中指定数量的产品放入指定的吸塑盒的槽中。

5.2. Seal the slot case with two pieces of tape & an inner label to middle of slot case.

将两头的开口分别用二条小胶带封住其开口，在内盒的中间贴上内标签。

5.3. Set up a carton & secure bottom with flaps.

折叠好一个外箱，并用胶带封好箱的底部。

5.4. Put 14 sets of slot case loaded products into carton with two rows.

将14套已装满产品的SLOT CASE分两排放入外箱中。

注：贴有标签的一面朝上，SLOT CASE 放入外箱的方向要一致。

5.5. Fill void of box side with two pieces of bubble pad.

将一块气泡垫填充外箱短边的空隙，多余部分盖在产品上面，再另外放一块气泡垫在产品上面，气泡朝上。

5.6. Seal the box with tape. And place product identification label in "product id" marked on box.

用胶带封箱，在箱外印有“PRODUCT ID”标识处贴上外标签。

For TYPE L、M、N、O (请参照包装示意图 3,page 22 of 22) :

Only for 292166 series:

5.1. Place a stopper into the right side of tube.

用塞子塞住TUBE的右端(如图3所示)。

5.2. Load products into a tube all orientated same way.

按4中数量将产品朝同一方向放入一TUBE中。

5. PACKING METHOD 包装方法

5.3. Bundle 25 tubes of product with a elastic as one sheaf (Elastic should lay aboard the rubber stopper side).

如图1、3所示，用橡皮筋将25条装有产品的tube扎成一捆(橡皮筋扎在靠近有胶塞的一侧)。

5.4. Pack it with polybag & tie with elastic as the figure 2 show. And stick one RoHS green label on the polybag.

如图1、2所示，用一个PE袋(1533282-6)套住tubes的左端并用橡皮筋扎好(替代原来的胶塞)，并在PE袋上贴一绿色RoHS小标签(特别注意：对于292166，每条Tube上不用贴绿色RoHS标签)。

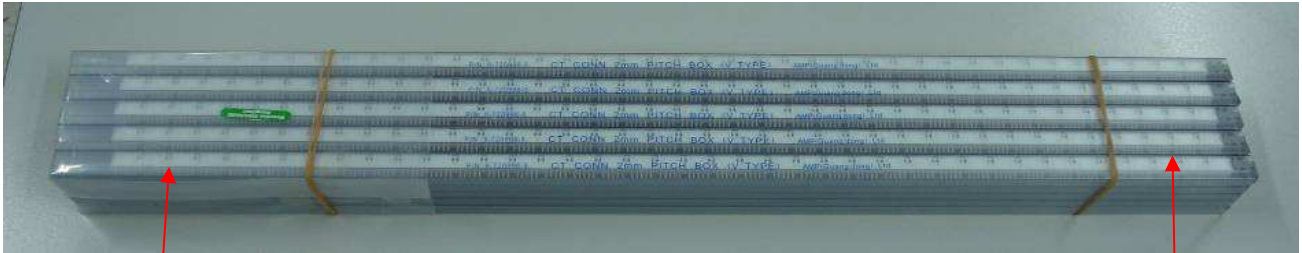


图 1

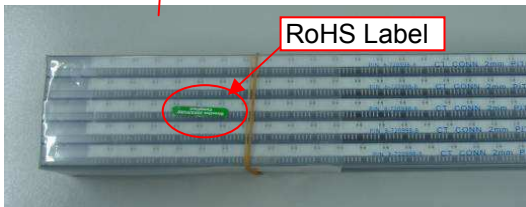


图 2 (左端用PE袋套住)

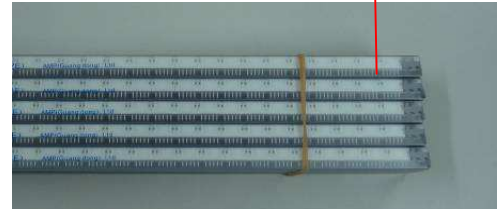


图 3(右端用塞子塞住TUBE)



用小透明胶布将PE袋粘好。

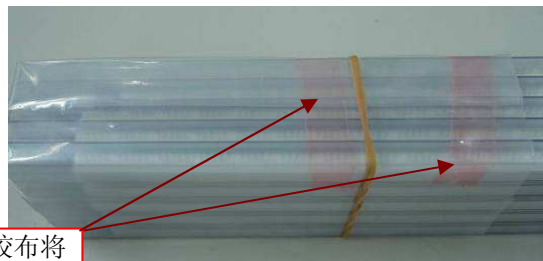
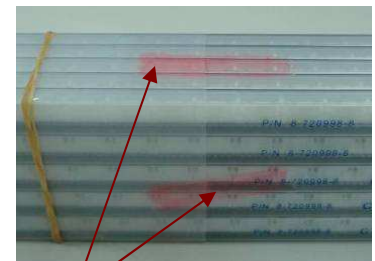


图 5



在tube的四个面上各用一小透明胶布将PE袋固定在Tube上。

图 6

5.5. Seal the polybag with small transparent tapes as figure 4 & 5 & 6 show.

如图4、5、6所示，用小透明胶布将PE袋粘好并固定在Tube上。

5.6. Place two bundles of tubes(50 tubes) loaded products into bigger polybag and seal with tape .

And place an inner label to middle of polybag.

将2捆(50条)装满产品的TUBE朝同一方向入大PE袋(2-720998-0)中，并用透明胶带封好，然后在袋子中间位置上贴一内标签。

注：产品放入大PE袋中时，其中PE袋扎Tube的一端应与大PE袋的袋口方方向一致。

5. PACKING METHOD 包装方法

5.7. Set up a box & secure bottom flaps with tape.

折叠好一个包装箱，并用胶带封好箱底。

5.8. Place 3 bags with tubes into box.

如图7所示，将3袋装好TUBE的袋子放入箱中（有标签一面朝上）。

5.9. Fill void with proper foam.

如图7所示，用适当的气泡垫填充箱中的空隙。

注：对TUBE 8-720998-8，用八块气泡垫填充空隙。



图 7

5.10. Seal the box with tape. And place product identification label in "product id" marked on box.

用胶带封箱，在箱外印有“PRODUCT ID”标识处贴上外标签。

Only for 292261、292168、292167、292217、292170、292169、292165、292260、292164 series:

5.1. Place a stopper into the side of tube.

用塞子塞住TUBE的一端。

5.2. Load products into a tube all orientated same way.

按4中数量将产品朝同一方向放入一TUBE中。

5.3. Place another stopper onto the another side of the tube.

用塞子塞住TUBE的另一端。

5.4. Place 50 tubes loaded products in polybag.

在塑料袋中朝同一方向放50条装满产品的TUBE入袋中。

5.5. Seal it with tape & an inner label to middle of polybag.

用胶带封口，在袋子的中间贴上内标签。

5. PACKING METHOD 包装方法

5.6. Set up a box & secure bottom flaps with tape.

折叠好一个包装箱，并用胶带封好箱底。

5.7. Place 3 bags with tubes into box.

将3袋装好TUBE的袋子放入箱中。

5.8. Fill void with proper foam.

用适当的气泡垫填充箱中的空隙。

对TUBE 9-720996-9 和 8-720998-8，用八块气泡垫填充空隙。

对TUBE 5-720995-7，用七块气泡垫填充空隙。

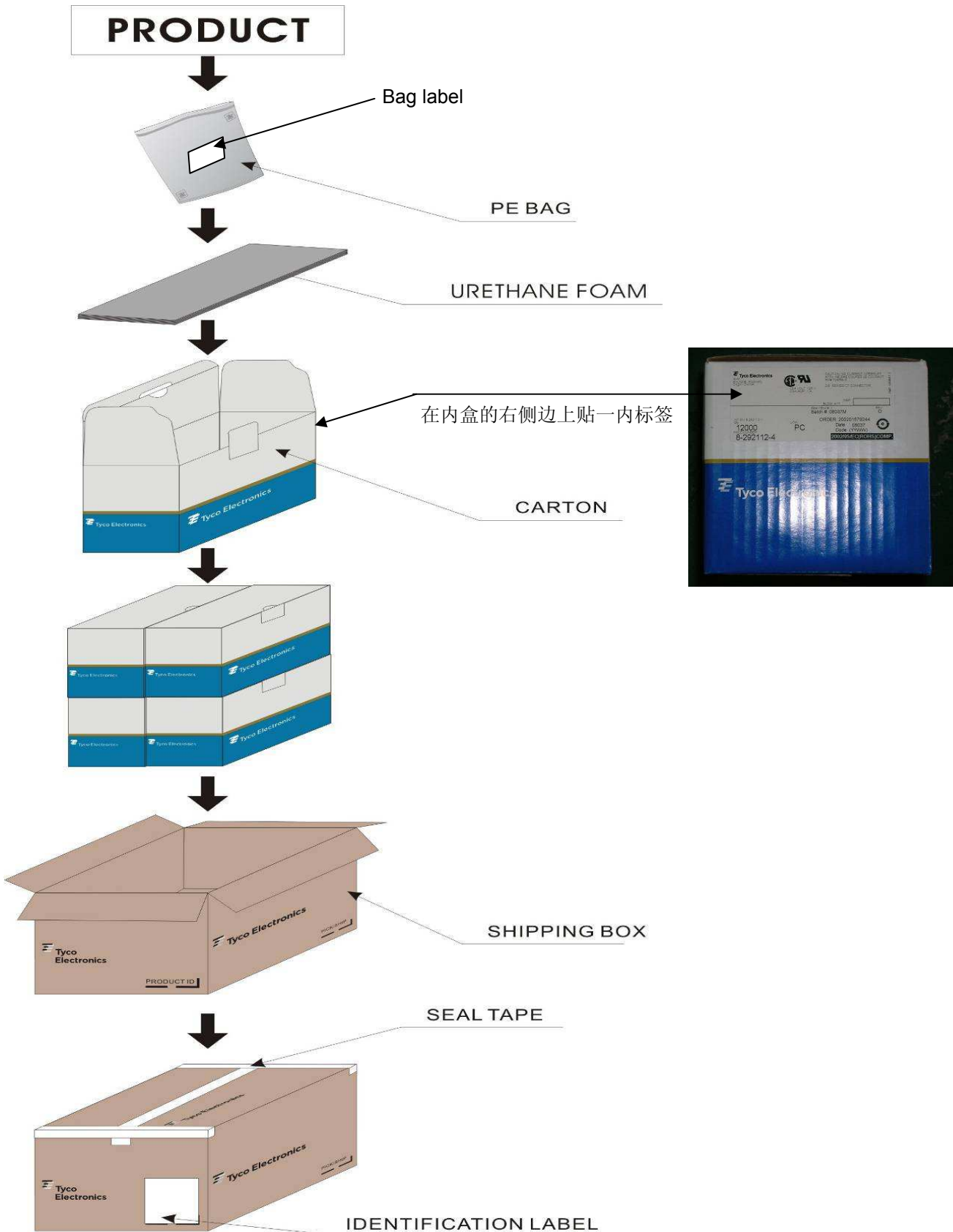
对TUBE 6-720999-1，用五块气泡垫填充空隙。

5.9. Seal the box with tape. And place product identification label in "product id" marked on box.

用胶带封箱，在箱外印有“PRODUCT ID”标识处贴上外标签。

6. PACKAGING ILLUSTRATION 包装示意图 1

Packed in PE Bag (TYPE A~I)

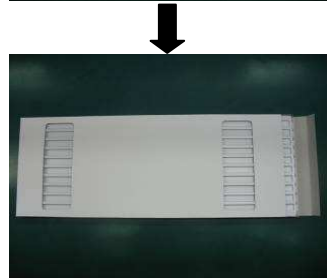


6. PACKAGING ILLUSTRATION 包装示意图 2

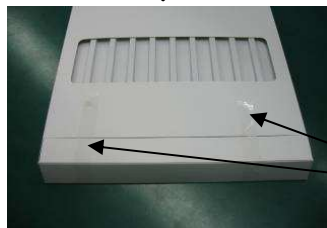
Packed In PS Slot Case (TYPE J、K)



Put products into the slot grooves.



Put the slot into the case.



Seal the slot case with two pieces of tape.



Inner label on middle of slot case.



Put slot case loaded products into carton with two rows.



Two air caps fill the void of box;
Then seal the box with tape.

6. PACKAGING ILLUSTRATION 包装示意图 3

Packed in Tube (TYPE L、M、N、O)

