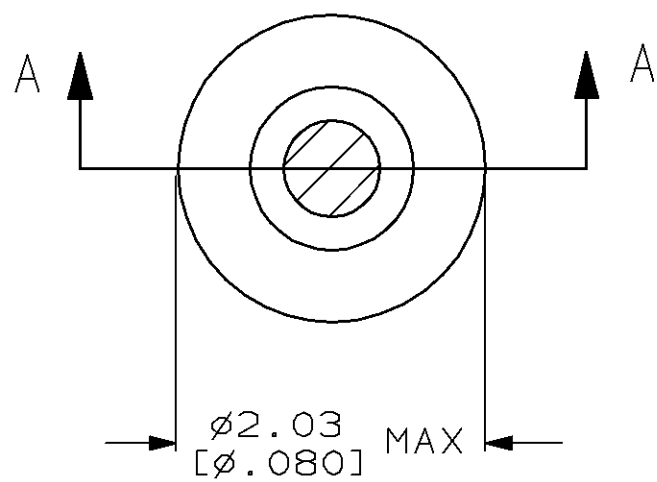
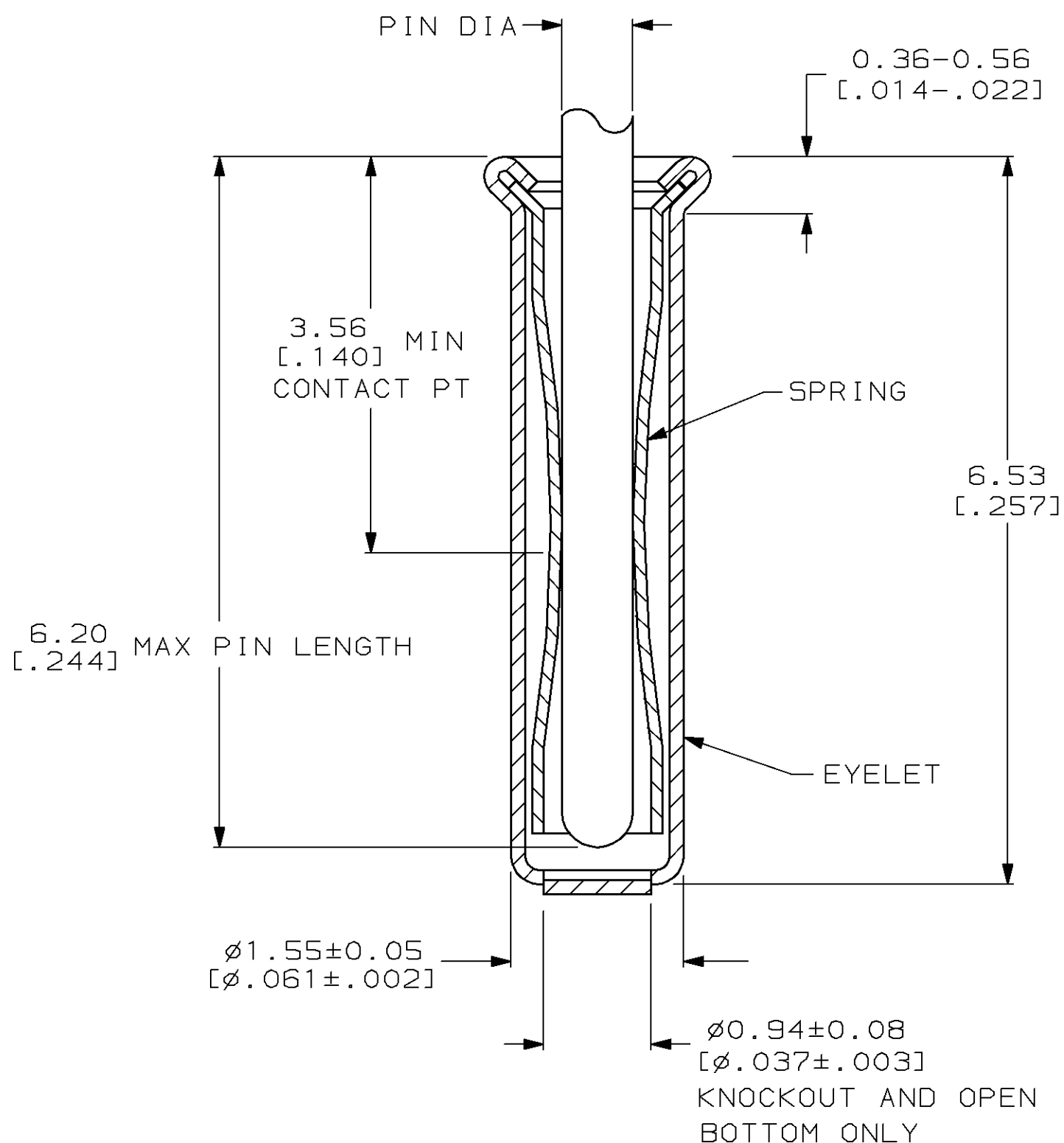


LOC	DIST	P	F	ZONE	LTR	DESCRIPTION	DATE	APPD
FT	64				AB	REDRAWN & REV PER AG-2416	4-5-91	RET
					AC	REV PER EC 0330-46-97	12 JAN 98	SR



1. TIN PER MIL-T-10727 OR TIN LEAD 0.00254 [ .000100 ] MIN THK.
2. GOLD PER MIL-G-45204, TYPE II, 0.00076 [ .000030 ] MIN THK OVER NICKEL PER QQ-N-290 0.00028 [ .000011 ] MIN THK ON CONTACT AREA.
3. GOLD FLASH PER MIL-G-45204, TYPE II, 0.13  $\mu$ m [ .000005 ] MIN THK. OVER NICKEL PLATE PER QQ-N-290 0.51  $\mu$ m - 1.52  $\mu$ m [ .000020 - .000060 ] EXT THK.
4. TIN PER MIL-T-10727 OR TIN LEAD 0.00381 [ .000150 ] MIN THK.
5. RECOMMENDED HOLE SIZE, PLATED OR UNPLATED:
 

MACHINE INSERTION:	1.57	+0.10	-0.08	[ .062	+ .004	- .003 ]
HAND INSERTION:	1.60	+0.10	-0.00	[ .063	+ .004	- .000 ]
6. APPLICATION TOOL PART NUMBER: MACHINE NO. 682127-4  
INSERTION HEAD NO. 682039-3
7. TO INSURE PROPER SPRING TENSION DO NOT EXCEED A 0.05 [ .002 ] DIFFERENCE IN PIN DIA WHEN CHANGING TO A SMALLER PIN.
8. BOTTOM PLUG KNOCKOUT TOOL PART NUMBER 69729 WITH TIP PART NUMBER 69728-1.



LOC	FINISH	RECOMMENDED PIN DIA	FINISH	PART NO
SUPSD BY 50864-1	CLOSED	0.66-0.84 [ .026-.033 ]	TIN 1	1-50864-5
	OPEN		TIN 1	1-50864-3
	KNOCKOUT		TIN 1	50864-8
	CLOSED		TIN 1	50864-7
	OPEN		TIN 1	50864-6
	OPEN		GOLD 3	50864-5
	KNOCKOUT		TIN 1	50864-4
	CLOSED		TIN 1	50864-3
			GOLD 3	50864-1
			GOLD 3	50864
BOTTOM TYPE	RECOMMENDED PIN DIA	EYELET	SPRING	PART NO

DO NOT SCALE PRINT. UNLESS SPECIFIED DIMENSIONS IN mm [INCHES] TOLERANCES ON: 2 PLC DEC ± - 3 PLC DEC ± 0.20 [ .008 ] ANGLES ± -		DR 4-5-91 R.TALLEY	AMP Incorporated Harrisburg, PA 17105-3608	
MATERIAL SPRING: BERYLLIUM COPPER QQ-C-533 EYELET: COPPER, QQ-C-576		CHK - APPD - APPD - PRODUCT SPEC -		
FINISH SEE TABLE	APPLICATION SPEC -	SIZE C 00779	DRAWING NO 50864	PART NO
	WEIGHT -	SCALE 20:1	SHEET 1 OF 1	