

Distributed by:

**JAMECO**<sup>®</sup>  
ELECTRONICS

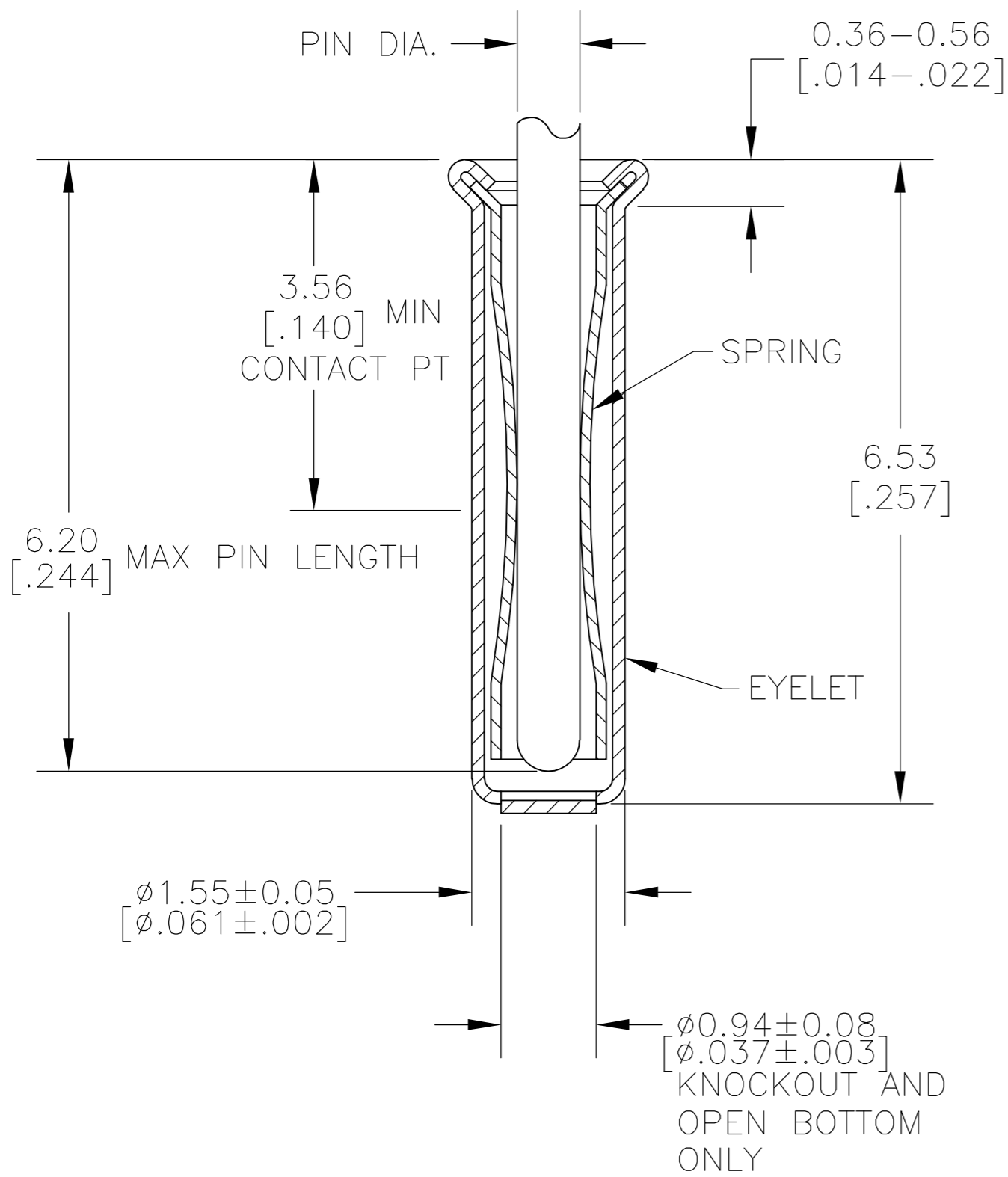
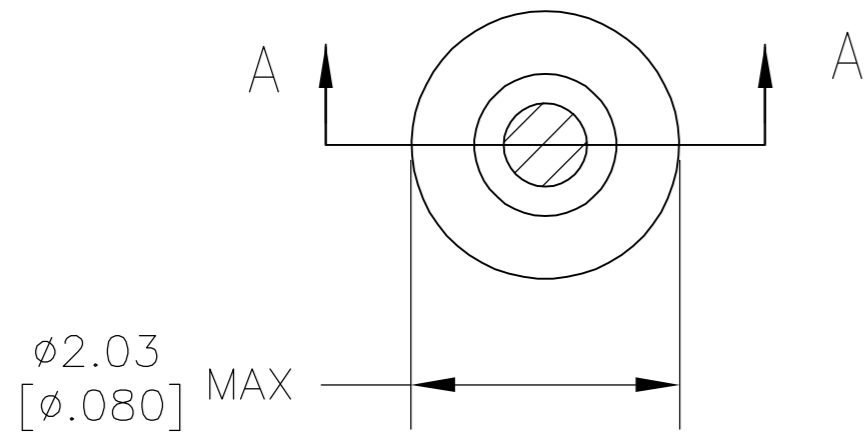
**www.Jameco.com ♦ 1-800-831-4242**

The content and copyrights of the attached  
material are the property of its owner.

Jameco Part Number 850128

THIS DRAWING IS UNPUBLISHED. RELEASED FOR PUBLICATION  
 © COPYRIGHT BY TYCO ELECTRONICS CORPORATION. ALL RIGHTS RESERVED.

LOC	DIST	REVISIONS					
FT	64	P	LTR	DESCRIPTION	DATE	DWN	APVD
		AD		REV PER 0511-0196-04	9-19-05	CJL	JGH



SECTION A-A

- 1. TIN PER MIL-T-10727 OR TIN LEAD 0.00254 [.000100] MIN THK.
- 2. GOLD PER MIL-G-45204, TYPE II, 0.00076 [.000030] MIN THK OVER NICKEL PER QQ-N-290 0.00028 [.000011] MIN THK ON CONTACT AREA.
- 3. GOLD FLASH PER MIL-G-45204, TYPE II, 0.13 $\mu$ m [.000005] MIN THK. OVER NICKEL PLATE PER QQ-N-290 0.51 $\mu$ m-1.52 $\mu$ m [.000020-.000060] EXT THK.
- 4. TIN PER MIL-T-10727 OR TIN LEAD 0.00381 [.000150] MIN THK.
- 5. RECOMMENDED HOLE SIZE, PLATED OR UNPLATED:  
 MACHINE INSERTION: 1.57  $\begin{matrix} +0.10 \\ -0.08 \end{matrix}$  [.062  $\begin{matrix} +.004 \\ -.003 \end{matrix}$ ]  
 HAND INSERTION: 1.60  $\begin{matrix} +0.10 \\ -0.00 \end{matrix}$  [.063  $\begin{matrix} +.004 \\ -.000 \end{matrix}$ ]
- 6. APPLICATION TOOL PART NUMBER: MACHINE NO. 682127-4  
 INSERTION HEAD NO. 682039-3
- 7. TO INSURE PROPER SPRING TENSION DO NOT EXCEED A 0.05 [.002] DIFFERENCE IN PIN DIA WHEN CHANGING TO A SMALLER PIN.
- 8. BOTTOM PLUG KNOCKOUT TOOL PART NUMBER 69729 WITH TIP PART NUMBER 69728-1.
- 9. MATERIAL: SPRING: BERYLLIUM COPPER QQ-C-533  
 EYELET: COPPER, QQ-C-576

SUPERSEDED BY 50864-1	CLOSED	0.66-0.84 [.026-.033]	TIN 4	GOLD 2	1-50864-5
	OPEN				1-50864-3
	OBSOLETE KNOCKOUT		TIN 1	TIN 1	50864-8
	CLOSED				50864-7
	OBSOLETE OPEN		GOLD 3		50864-6
	OBSOLETE KNOCKOUT		TIN 1	GOLD 2	50864-5
	CLOSED		TIN 1		50864-4
			TIN 1		50864-3
			GOLD 3		50864-1
			EYELET	SPRING	
BOTTOM TYPE	RECOMMENDED PIN DIA 9	FINISH		PART NO	

THIS DRAWING IS A CONTROLLED DOCUMENT. DWN R.TALLEY 4-5-91

DIMENSIONS: mm [INCHES] TOLERANCES UNLESS OTHERWISE SPECIFIED:

0 PLC	± -
1 PLC	± -
2 PLC	± -
3 PLC	± 0.20 [.008]
4 PLC	± -
ANGLES	± -
FINISH	-

MATERIAL: 9

APVD: -  
 PRODUCT SPEC: -  
 APPLICATION SPEC: -  
 WEIGHT: -

**tyco Electronics** Tyco Electronics Corporation  
 Harrisburg, Pa 17105-3608

NAME: MINIATURE SPRING SOCKET ASSEMBLY

SIZE: A2 CAGE CODE: 00779 DRAWING NO: C=50864 RESTRICTED TO: -

CUSTOMER DRAWING SCALE: 20:1 SHEET: 1 OF 1 REV: AD