

AMPMODU MTE INTERCONNECT SYSTEM

Quick Reference Guide

AMPMODU MTE Interconnect System

The TE Connectivity (TE) AMPMODU MTE interconnection system is utilized in wire-to-board and wire-to-wire applications, and can be found in many types of electronic equipment including computers, copiers, commercial printers, appliances, medical equipment, and automotive controls. The product implements Insulation Displacement Contacts (IDC) or Crimp Snap-In contacts to suit customer's needs.

BENEFITS & FEATURES

- Assembly designs offer latching and polarization
- Coupling shrouds permit ganging of smaller receptacle and pin assemblies with guide ribs to form larger single or double row latching connectors
- Available in three platings
- Swage option on posts provides retention in PC board
- High temperature option is SMT compatible
- Applicable Sizes 2-25 positions per row

APPLICATIONS

- Medical Instruments
- Automotive Controls
- Copiers
- Appliances
- Commercial Printers
- Vending
- Computers
- Instrumentation & Test Equipment
- Telecommunications
- Storage Equipment

PRODUCT/APPLICATION SPECIFICATION

- **Product Specification:**
108-25034 (Standard Product)
108-25034-2 (Surface Mount Product)
- **Application Specification:** 114-25026
- **Operating Temperature:** -65° to +105°C
- **Current:** 3 amps max.
(single contact in free air)

INSULATION DISPLACEMENT VS. CRIMP SNAP-IN

IDC

- Time savings for high volume applications
- Preloaded contacts
- Automation
- Mates with same headers as crimp


Crimp-on Snap-In

- Cost effective for low/medium volume applications
- Flexibility (AWG)
- Manual labor
- Mates with same headers as IDC

AMPMODU MTE Interconnect System

RECEPTACLE ASSEMBLIES

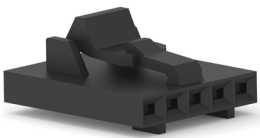
IDC Receptacles

Product Type	Product Image	Size	AWG	Plating		
				15 μ " Au	30 μ " Au	Matte Tin
MTE Receptacle Assemblies		2	22-26	5-103957-1	5-103958-1	5-103956-1
		3		5-103957-2	5-103958-2	5-103956-2
		4		5-103957-3	5-103958-3	5-103956-3
		5		5-103957-4	5-103958-4	5-103956-4
		
		25	7-103644-4	7-103734-4	7-103645-4	
		2	26-30	5-103960-1	5-103961-1	5-103959-1
		3		5-103960-2	5-103961-2	5-103959-2
		4		5-103960-3	5-103961-3	5-103959-3
		5		5-103960-4	5-103961-4	5-103959-4
		
		25		7-103640-4	7-103897-4	7-103641-4

Short Point Replacement Contacts

Product Type	Product Image	Size	AWG	Strip	Loose Piece
Crimp Snap-In Short Point Contact		15 μ " Au	20-24	104479-9	1-104479-2
		30 μ " Au		1-104479-0	1-104479-3
		Matte Tin		104479-8	1-104479-1
		15 μ " Au	22-26	1-104480-2	1-104480-5
		30 μ " Au		1-104480-3	1-104480-6
		Matte Tin		1-104480-7	1-104480-4
		15 μ " Au	28-32	1-104481-0	1-104481-2
		30 μ " Au		1-104481-1	1-104481-3
		Matte Tin		5-104481-2	5-104481-6

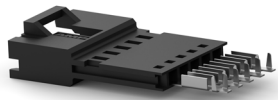
MTE Receptacle Housings

Product Type	Product Image	Size	PN
Wire Receptacle Housing		2	104257-1
		3	104257-2
		4	104257-3
		5	104257-4
	
		25	2-104257-4

AMPMODU MTE Interconnect System

PIN COUNTERPARTS

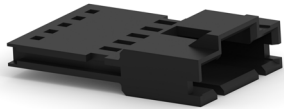
IDC Headers

Product Type	Product Image	Size	AWG	Plating		
				15 μ " Au	30 μ " Au	Matte Tin
MTE Pin Assemblies		2	22-26	5-103945-1	5-103946-1	5-103944-1
		3		5-103945-2	5-103946-2	5-103944-2
		4		5-103945-3	5-103946-3	5-103944-3
		5		5-103945-4	5-103946-4	5-103944-4
		
		25		7-103660-4	7-103893-4	7-103661-4
		2	26-30	5-103948-1	5-103949-1	5-103947-1
		3		5-103948-2	5-103949-2	5-103947-2
		4		5-103948-3	5-103949-3	5-103947-3
		5		5-103948-4	5-103949-4	5-103947-4
		
		25		7-103658-4	7-103894-4	7-103659-4

Crimp Pin Replacement Contacts

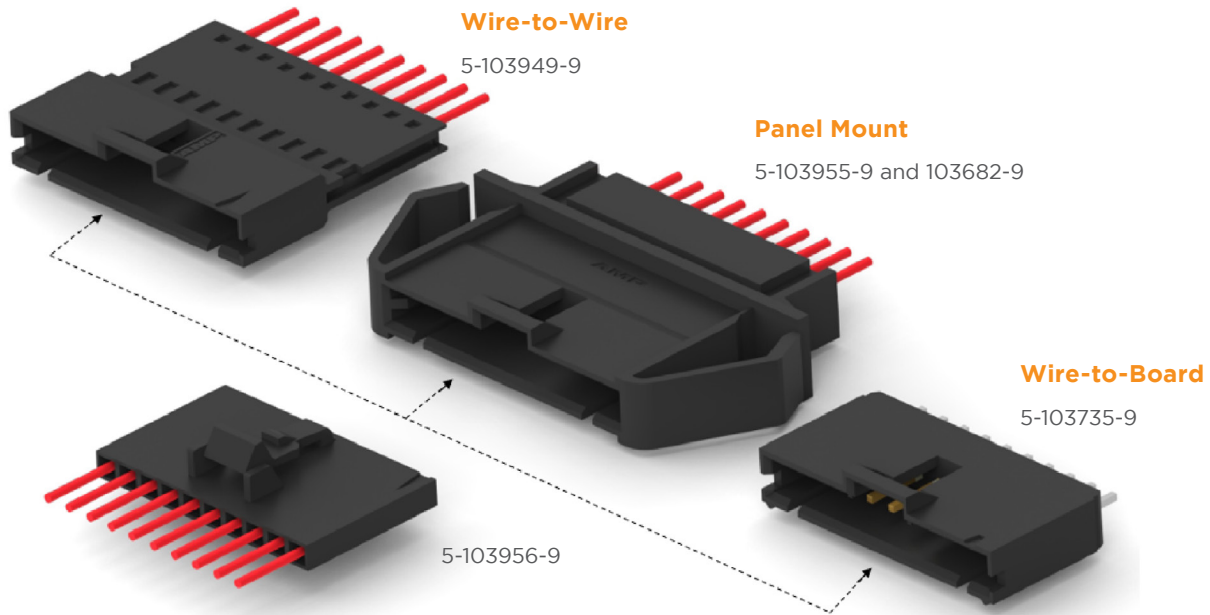
Product Type	Product Image	Size	AWG	Strip	Loose Piece
Crimp Snap-In Pin Contact		15 μ " Au	22-26	5-104505-4	5-104505-5
		30 μ " Au		5-104505-6	5-104505-7
		Matte Tin		5-104505-2	5-104505-3
		15 μ " Au	28-32	5-104506-4	5-104506-5
		30 μ " Au		5-104506-6	5-104506-7
		Matte Tin		5-104506-2	5-104506-3

MTE Crimp Pin Housings

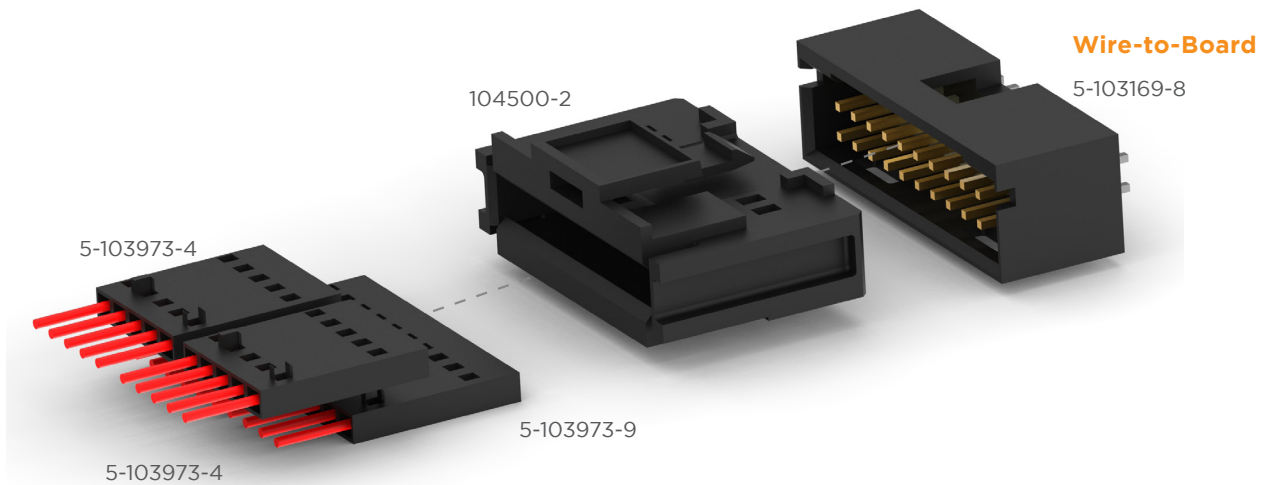
Product Type	Product Image	Size	PN
MTE Crimp Pin Housing		2	103653-1
		3	103653-2
		4	103653-3
		5	103653-4
	
		25	2-103653-4

AMPMODU MTE Interconnect System

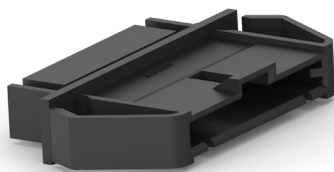
Typical Application of Single-Row Coupling Shroud and Mating AMPMODU MTE Products



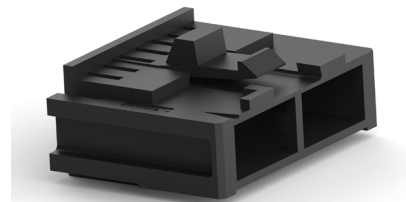
Typical Application of Double-Row Coupling Shroud And Mating Ampmodu MTE Products



Coupling Shrouds



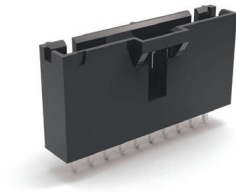
103682 (2-25P)
Panel Mount



103681 (8-16P), 104500 (18-50P)
Double Row

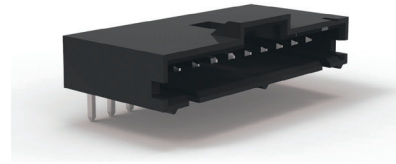
AMPMODU MTE Interconnect System

Single Row, Header on Board



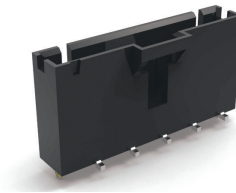
Vertical, THT

Plating	Standard	Swaged Tail
30 μ " Au	103735	103908
15 μ " Au	104363	104362
Matte Tin	103639	103669



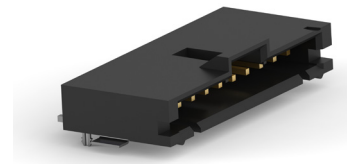
Right Angle, THT

Plating	w/ Hold Down	w/o Hold Down
30 μ " Au	103904	104935
15 μ " Au	103673	103635
	104361	
Matte Tin	103672	103634



Vertical, SMT

Plating	w/ Hold Down
30 μ " Au	1375583
15 μ " Au	1375582
Matte Tin	1375549



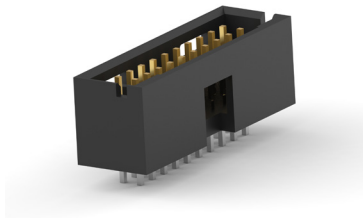
Right Angle, SMT

Plating	w/ Hold Down
30 μ " Au	147323
15 μ " Au	147278
Matte Tin	147324

Part Number:

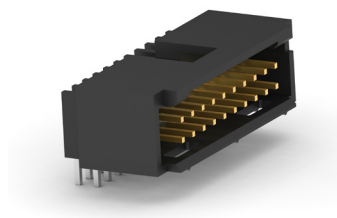
- For all Single Row Headers: 5-xxxxxxx-1 (2P) - 7-xxxxxxx-4 (25P);
- Please visit TE.com for more product detail.

Double Row, Header on Board



Vertical, THT

Plating	Standard	w/ Hold Down
30 μ " Au	103169	
15 μ " Au	102619	104317
Matte Tin	87587	



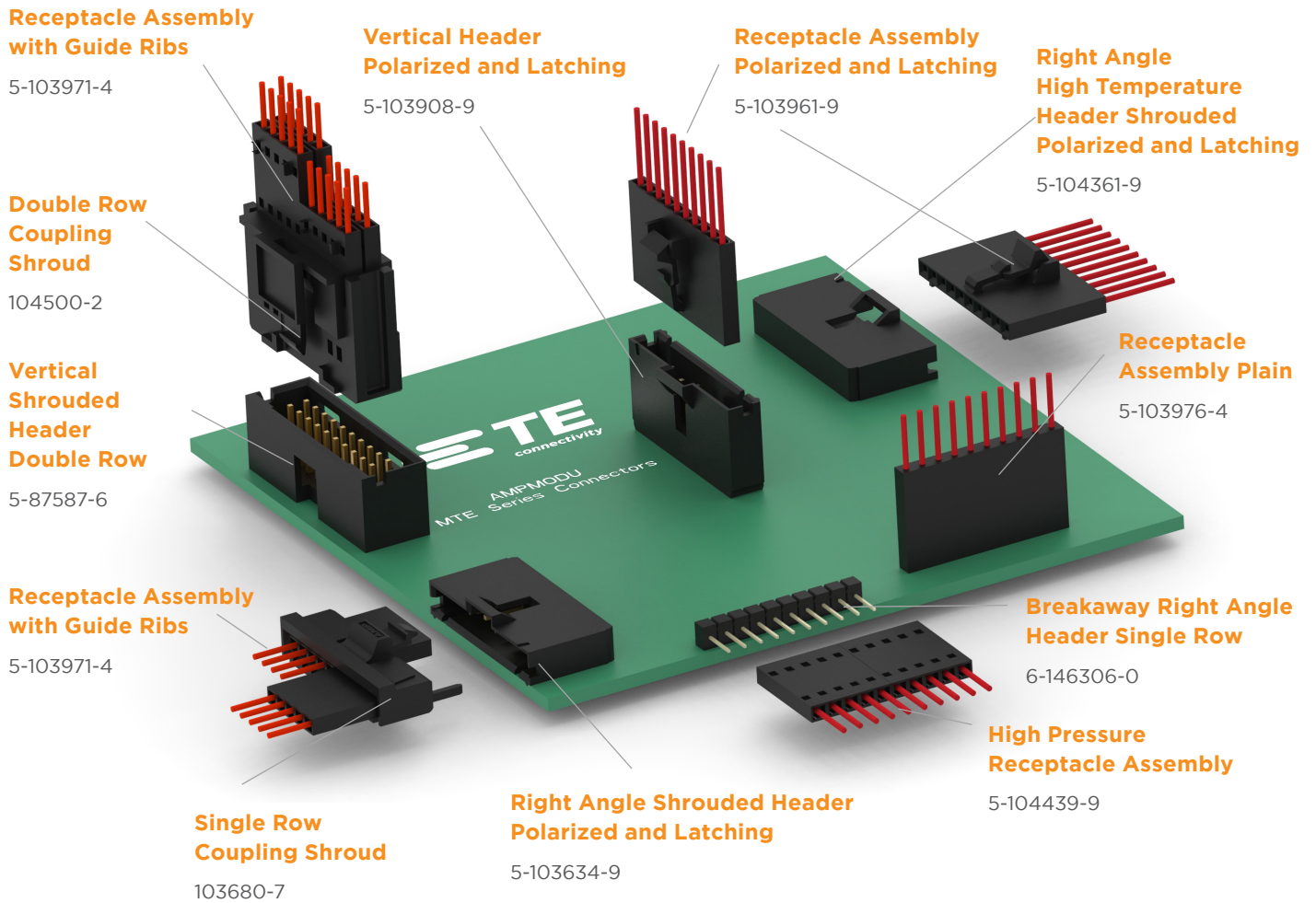
Right Angle, THT

Plating	Standard	w/ Hold Down
30 μ " Au	103167	
15 μ " Au	102570	104319
Matte Tin	87577	

Part Number:

- Vertical, THT, Standard: 5-xxxxxxx-1 (6P) - 7-xxxxxxx-3 (50P);
- Right Angle, THT, Standard: 5-xxxxxxx-1 (8P) - 7-xxxxxxx-2 (50P);
- Please visit TE.com for more product detail.

AMPMODU MTE Interconnect System



Application Tooling

AMPMODU MTE Part Number	Tooling Part Number	Tooling Description	Instruction Sheet
All Receptacle Assembly Part Numbers Listed Below	58074-1	Manual Pistol Grip	408-6790
	58075-1	Pneumatic Pistol Grip	408-6789
	58338-1	Bench Mounted Pneumatic Power Assembly	408-9393
	931800-1	IDC Electric Power Unit	409-5746
	58336-1	MTE Modular Head	408-9359

AMPMODU MTE Interconnect System

What are the current rating (amps) and voltage requirements of AMPMODU MTE connectors?

3 amps for a single contact in free air, 267 V (operating voltage)

What type and size requirements?

#22-#30 AWG range for IDC configurations; #20-#32 AWG for crimp snap-in contacts

What are the number of positions needed?

2-25 positions, double row coupling shrouds allow 8-50 position configurations

Available space?

.100 centerline and .100 x .100 centerline (coupling shrouds mating to PCB headers)

Configuration/orientation?

Right angle, vertical, single/double row

Operating temperature requirements?

Will accommodate -65°C to +105°C range

Environmental Considerations?

Refer to TE product specifications 108-25034, 108-25034-2 (MTE surface mount product), 108-1472 and 108-1472-1 (Short Point)

te.com

© 2019 TE Connectivity. All Rights Reserved.

AMPMODU, TE, TE Connectivity, and TE Connectivity (logo) are trademarks. All other logos, products and/or company names referred to herein might be trademarks of their respective owners.

While TE has made every reasonable effort to ensure the accuracy of the information in this brochure, TE does not guarantee that it is error-free, nor does TE make any other representation, warranty or guarantee that the information is accurate, correct, reliable or current. TE reserves the right to make any adjustments to the information contained herein at any time without notice. TE expressly disclaims all implied warranties regarding the information contained herein, including, but not limited to, any implied warranties of merchantability or fitness for a particular purpose. The dimensions in this catalog are for reference purposes only and are subject to change without notice. Specifications are subject to change without notice. Consult TE for the latest dimensions and design specifications.

4-1773458-0 06/19 Tangence