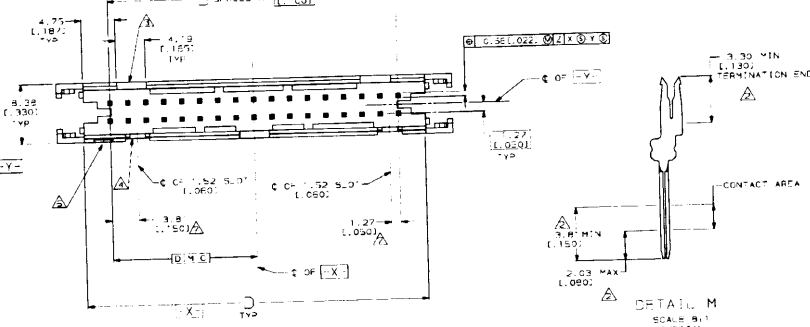
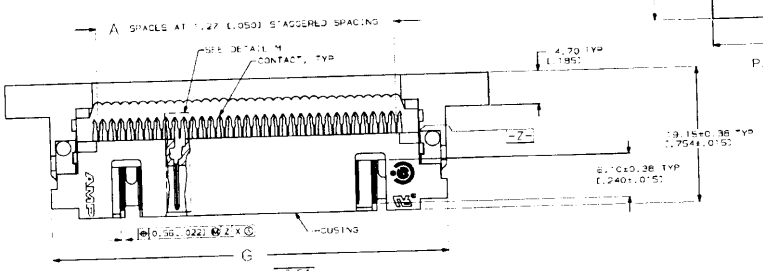
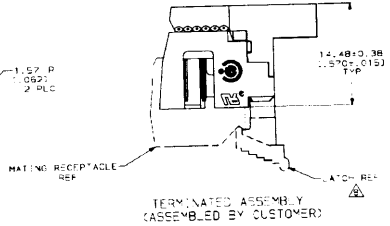
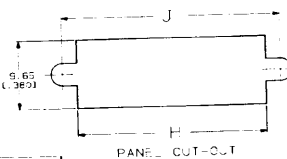
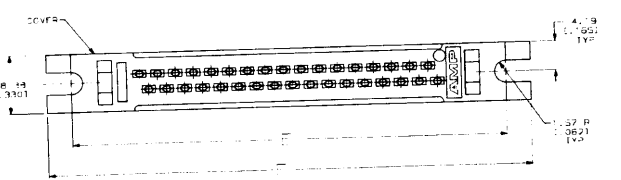


REV	DATE	DESCRIPTION	BY	CHK
1		REVISED PER EIA 3104E1		
2		REVISED PER EIA 3104E2		
3		REVISED PER EIA 3104E3		
4		REVISED PER EIA 3104E4		
5		REVISED PER EIA 3104E5		

- △ FLAME RETARDANT 84V-0 RATED THERMOPLASTIC BLACK.
- △ 2.54 $\mu$ m (0.000100) MIN BRIGHT TIN LEAD ON TERMINATION END.
- △ 0.15 $\mu$ m (0.000050) MIN GOLD ON CONTACT AREA, ALL OVER
- △ 1.27 $\mu$ m (0.00050) MIN NICKEL.
- △ NO SLOT ON THIS END FOR IC AND 14 POSITION HOUSINGS.
- △ NO SLOT FOR SNAP-IN POLARIZER ON THIS END FOR 10 AND 14 POSITION HOUSINGS.
- △ FOR MILITARY POLARIZATION, ORDER SNAP-IN POLARIZER 495881-2 (BULK PACK OF 50).
- △ POSITIONING INDICATOR.
- △ COORDINATE DIMENSION APPLIES FROM CENTER OF ACTUAL FEATURE.
- △ FOR LATCHES ORDER 11451, 2 PER ASSEMBLY.
- △ PHOSPHOR BRONZE PER QQ-B-750.



59.16	59.05	58.79	108.07	59.16	56.2	35.37	31	53	54	1-11448-3
(3.924)	(3.742)	(3.652)	(4.778)	(3.924)	(3.384)	(1.392)				
64.06	63.97	63.70	100.90	64.06	61.72	36.85	29	58	50	1-11448-2
(3.294)	(3.542)	(3.452)	(3.976)	(3.294)	(3.184)	(1.452)				
61.36	77.27	68.39	90.25	61.36	56.45	30.48	24	49	50	1-11448-1
(3.204)	(3.042)	(2.892)	(3.476)	(3.204)	(2.954)	(1.202)				
79.76	66.88	68.39	80.67	79.76	60.81	26.67	21	43	44	1-11448-0
(2.594)	(2.742)	(2.852)	(3.176)	(2.594)	(2.354)	(1.052)				
69.58	64.57	63.50	76.69	69.58	55.73	24.13	18	39	40	1-11448-9
(2.794)	(2.542)	(2.452)	(2.976)	(2.794)	(2.564)	(1.002)				
61.06	56.95	55.68	67.67	61.06	48.11	20.37	16	33	34	1-11448-9
(3.204)	(2.404)	(2.152)	(2.676)	(3.204)	(2.404)	(1.002)				
58.98	57.97	50.60	57.69	55.98	43.03	17.78	14	29	30	1-11448-7
(2.204)	(2.042)	(1.952)	(2.476)	(2.204)	(1.894)	(1.202)				
50.90	46.79	45.52	57.81	50.90	37.95	15.24	12	25	26	1-11448-5
(2.004)	(1.842)	(1.752)	(2.276)	(2.004)	(1.694)	(1.002)				
49.36	44.25	42.98	55.27	49.36	35.41	13.67	11	23	24	1-11448-5
(1.994)	(1.742)	(1.652)	(2.176)	(1.994)	(1.694)	(1.002)				
43.28	38.17	37.00	50.19	43.28	30.33	11.14	8	16	20	1-11448-4
(1.704)	(1.542)	(1.452)	(1.976)	(1.704)	(1.194)	(1.452)				
39.20	34.09	32.82	45.11	39.20	25.25	9.63	7	15	16	1-11448-3
(1.504)	(1.342)	(1.252)	(1.726)	(1.504)	(1.094)	(1.302)				
35.86	31.35	30.29	42.57	35.86	22.71	9.57	6	13	14	1-11448-2
(1.404)	(1.242)	(1.152)	(1.576)	(1.404)	(1.094)	(1.302)				
30.58	26.47	25.20	37.43	30.58	17.53	7.08	4	9	10	1-11448-1
(1.204)	(1.042)	(0.952)	(1.476)	(1.204)	(0.942)	(1.202)				
J	H	G	F	E	D	C	B	A	NO OF PINS	PART NUMBER

DO NOT SCALE DRAWING

DATE: 14-70-11

SCALE: 4X

UNIVERSAL INC PIN CONNECTOR WITH SLOTTED MOUNTING EARS, AMP-1401

DATE: 00778

REV: 448

CUSTOMER DRAWING

COVER NOT SHOWN IN THIS VIEW FOR CLARITY

DETAIL M SCALE: 8X TYPICAL