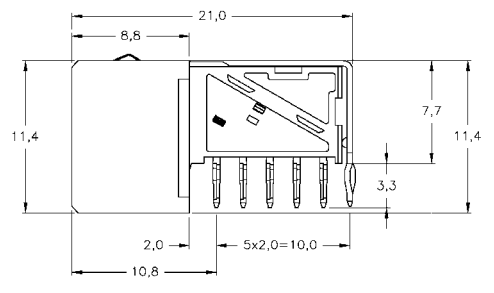
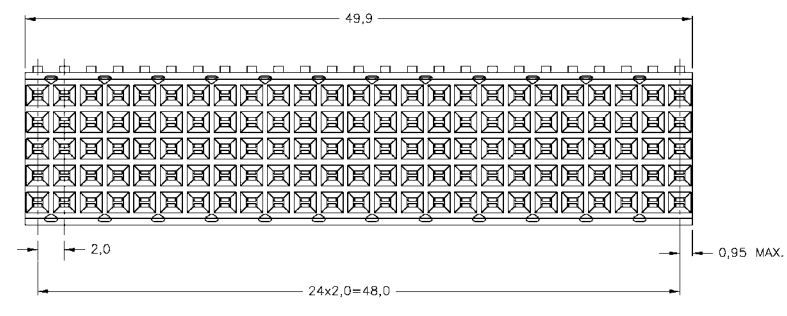
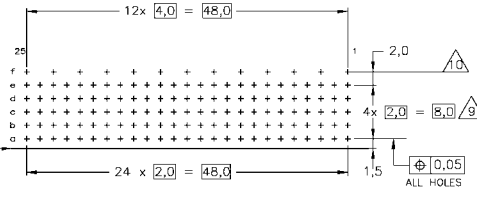


- NOTES:
- ⚠ MATERIAL CONTACTS: PHOSPHORBRONZE
  - ⚠ MATERIAL HOUSING: GLASSFILLED POLYESTER (GRAY)
  - ⚠ GENERAL PLATING SPECIFICATION: UNDERPLATING (ENTIRE CONTACT): 1.27μm NICKEL MIN. AND ACTION PIN: 0.5μm TIN MIN. FOR PLATING OF MATING SURFACES SEE APPLICABLE SPECIFICATION REFERENCE FOR EACH DASH NUMBER.
  - ⚠ CONFORMS TO ALL TESTING ACCORDING IEC 61076-4-101 PERFORMANCE LEVEL 2.
  - ⚠ CONFORMS TO ALL TESTING ACCORDING IEC 61076-4-101 PERFORMANCE LEVEL 1.
  - ⚠ CONNECTOR TESTED AND QUALIFIED AGAINST TELCORDIA CR-1217-CORE QUALITY LEVEL III, CENTRAL OFFICE APPLICATIONS.
  - ⚠ CONNECTOR LUBRICATED WITH TELCORDIA APPROVED LUBRICANT.
  - ⚠ PLATING SHIELD: CONTACT AREA: 0.76μm Au MIN. ACTION PIN: 0.5μm Sn MIN. REMAINDER: Ni
  - ⚠ ASSEMBLY PRINTED WITH P/N AND DATECODE
  - ⚠ THE MARKING CAN APPEAR ON THE FRONT SIDE OR BACK SIDE.
  - ⚠ HOLE PATTERN FOR FEMALE CONNECTOR TYPE B
  - ⚠ 125 PLATED-THROUGH HOLES AT 2x2mm SQUARE GRID
  - ⚠ ROW "1" 13 PLATED THROUGH HOLES FOR UPERSHIELD
  - ⚠ SHIELD MOUNTED ON CONNECTOR WITH DOUBLE SIDED ADHESIVE TAPE
  - 12 BASIC P.N. LOWERSHIELD: 5338110



COMPONENT SIDE AS SHOWN  
 RECOMMENDED PCB-HOLE LAY-OUT  
 SCALE 2.5:1



P.C.B. HOLE DIM. ACTION PIN  
 FOR DETAILS SEE  
 APPLICATION SPECIFICATION

THIS DRAWING IS A CONTROLLED DOCUMENT.

DIMENSIONS:	TO DIMENSIONS UNLESS OTHERWISE SPECIFIED.
0 P.L.C.	±
1 P.L.C.	±
2 P.L.C.	±
3 P.L.C.	±
4 P.L.C.	±
5 P.L.C.	±
6 P.L.C.	±
7 P.L.C.	±
8 P.L.C.	±
9 P.L.C.	±
10 P.L.C.	±
11 P.L.C.	±
12 P.L.C.	±
13 P.L.C.	±
14 P.L.C.	±
15 P.L.C.	±
16 P.L.C.	±
17 P.L.C.	±
18 P.L.C.	±
19 P.L.C.	±
20 P.L.C.	±
21 P.L.C.	±
22 P.L.C.	±
23 P.L.C.	±
24 P.L.C.	±
25 P.L.C.	±
26 P.L.C.	±
27 P.L.C.	±
28 P.L.C.	±
29 P.L.C.	±
30 P.L.C.	±
31 P.L.C.	±
32 P.L.C.	±
33 P.L.C.	±
34 P.L.C.	±
35 P.L.C.	±
36 P.L.C.	±
37 P.L.C.	±
38 P.L.C.	±
39 P.L.C.	±
40 P.L.C.	±
41 P.L.C.	±
42 P.L.C.	±
43 P.L.C.	±
44 P.L.C.	±
45 P.L.C.	±
46 P.L.C.	±
47 P.L.C.	±
48 P.L.C.	±
49 P.L.C.	±
50 P.L.C.	±
51 P.L.C.	±
52 P.L.C.	±
53 P.L.C.	±
54 P.L.C.	±
55 P.L.C.	±
56 P.L.C.	±
57 P.L.C.	±
58 P.L.C.	±
59 P.L.C.	±
60 P.L.C.	±
61 P.L.C.	±
62 P.L.C.	±
63 P.L.C.	±
64 P.L.C.	±
65 P.L.C.	±
66 P.L.C.	±
67 P.L.C.	±
68 P.L.C.	±
69 P.L.C.	±
70 P.L.C.	±
71 P.L.C.	±
72 P.L.C.	±
73 P.L.C.	±
74 P.L.C.	±
75 P.L.C.	±
76 P.L.C.	±
77 P.L.C.	±
78 P.L.C.	±
79 P.L.C.	±
80 P.L.C.	±
81 P.L.C.	±
82 P.L.C.	±
83 P.L.C.	±
84 P.L.C.	±
85 P.L.C.	±
86 P.L.C.	±
87 P.L.C.	±
88 P.L.C.	±
89 P.L.C.	±
90 P.L.C.	±
91 P.L.C.	±
92 P.L.C.	±
93 P.L.C.	±
94 P.L.C.	±
95 P.L.C.	±
96 P.L.C.	±
97 P.L.C.	±
98 P.L.C.	±
99 P.L.C.	±
100 P.L.C.	±

REVISIONS	DATE	BY	APP'D
B		EH10-0680-05	
		DATE: 01 JUN 85	
		BY: BSV	
		BM	

REVISIONS	DATE	BY	APP'D
B		EH10-0680-05	
		DATE: 01 JUN 85	
		BY: BSV	
		BM	

REVISIONS	DATE	BY	APP'D
B		EH10-0680-05	
		DATE: 01 JUN 85	
		BY: BSV	
		BM	

REVISIONS	DATE	BY	APP'D
B		EH10-0680-05	
		DATE: 01 JUN 85	
		BY: BSV	
		BM	

REVISIONS	DATE	BY	APP'D
B		EH10-0680-05	
		DATE: 01 JUN 85	
		BY: BSV	
		BM	

REVISIONS	DATE	BY	APP'D
B		EH10-0680-05	
		DATE: 01 JUN 85	
		BY: BSV	
		BM	

REVISIONS	DATE	BY	APP'D
B		EH10-0680-05	
		DATE: 01 JUN 85	
		BY: BSV	
		BM	

REVISIONS	DATE	BY	APP'D
B		EH10-0680-05	
		DATE: 01 JUN 85	
		BY: BSV	
		BM	

REVISIONS	DATE	BY	APP'D
B		EH10-0680-05	
		DATE: 01 JUN 85	
		BY: BSV	
		BM	

REVISIONS	DATE	BY	APP'D
B		EH10-0680-05	
		DATE: 01 JUN 85	
		BY: BSV	
		BM	

REVISIONS	DATE	BY	APP'D
B		EH10-0680-05	
		DATE: 01 JUN 85	
		BY: BSV	
		BM	

REVISIONS	DATE	BY	APP'D
B		EH10-0680-05	
		DATE: 01 JUN 85	
		BY: BSV	
		BM	

REVISIONS	DATE	BY	APP'D
B		EH10-0680-05	
		DATE: 01 JUN 85	
		BY: BSV	
		BM	

REVISIONS	DATE	BY	APP'D
B		EH10-0680-05	
		DATE: 01 JUN 85	
		BY: BSV	
		BM	

REVISIONS	DATE	BY	APP'D
B		EH10-0680-05	
		DATE: 01 JUN 85	
		BY: BSV	
		BM	

REVISIONS	DATE	BY	APP'D
B		EH10-0680-05	
		DATE: 01 JUN 85	
		BY: BSV	
		BM	

REVISIONS	DATE	BY	APP'D
B		EH10-0680-05	
		DATE: 01 JUN 85	
		BY: BSV	
		BM	

REVISIONS	DATE	BY	APP'D
B		EH10-0680-05	
		DATE: 01 JUN 85	
		BY: BSV	
		BM	

REVISIONS	DATE	BY	APP'D
B		EH10-0680-05	
		DATE: 01 JUN 85	
		BY: BSV	
		BM	

REVISIONS	DATE	BY	APP'D
B		EH10-0680-05	
		DATE: 01 JUN 85	
		BY: BSV	
		BM	

REVISIONS	DATE	BY	APP'D
B		EH10-0680-05	
		DATE: 01 JUN 85	
		BY: BSV	
		BM	

REVISIONS	DATE	BY	APP'D
B		EH10-0680-05	
		DATE: 01 JUN 85	
		BY: BSV	
		BM	

REVISIONS	DATE	BY	APP'D
B		EH10-0680-05	
		DATE: 01 JUN 85	
		BY: BSV	
		BM	

REVISIONS	DATE	BY	APP'D
B		EH10-0680-05	
		DATE: 01 JUN 85	
		BY: BSV	
		BM	

REVISIONS	DATE	BY	APP'D
B		EH10-0680-05	
		DATE: 01 JUN 85	
		BY: BSV	
		BM	

REVISIONS	DATE	BY	APP'D
B		EH10-0680-05	
		DATE: 01 JUN 85	
		BY: BSV	
		BM	

REVISIONS	DATE	BY	APP'D
B		EH10-0680-05	
		DATE: 01 JUN 85	
		BY: BSV	
		BM	

REVISIONS	DATE	BY	APP'D
B		EH10-0680-05	
		DATE: 01 JUN 85	
		BY: BSV	
		BM	

REVISIONS	DATE	BY	APP'D
B		EH10-0680-05	
		DATE: 01 JUN 85	
		BY: BSV	
		BM	

REVISIONS	DATE	BY	APP'D
B		EH10-0680-05	
		DATE: 01 JUN 85	
		BY: BSV	
		BM	

REVISIONS	DATE	BY	APP'D
B		EH10-0680-05	
		DATE: 01 JUN 85	
		BY: BSV	
		BM	

REVISIONS	DATE	BY	APP'D
B		EH10-0680-05	
		DATE: 01 JUN 85	
		BY: BSV	
		BM	

REVISIONS	DATE	BY	APP'D
B		EH10-0680-05	
		DATE: 01 JUN 85	
		BY: BSV	
		BM	

REVISIONS	DATE	BY	APP'D
B		EH10-0680-05	
		DATE: 01 JUN 85	
		BY: BSV	
		BM	

REVISIONS	DATE	BY	APP'D
B		EH10-0680-05	
		DATE: 01 JUN 85	
		BY: BSV	
		BM	

REVISIONS	DATE	BY	APP'D
B		EH10-0680-05	
		DATE: 01 JUN 85	
		BY: BSV	
		BM	

REVISIONS	DATE	BY	APP'D
B		EH10-0680-05	
		DATE: 01 JUN 85	
		BY: BSV	
		BM	

REVISIONS	DATE	BY	APP'D
B		EH10-0680-05	
		DATE: 01 JUN 85	
		BY: BSV	
		BM	

REVISIONS	DATE	BY	APP'D
B		EH10-0680-05	
		DATE: 01 JUN 85	
		BY: BSV	
		BM	

REVISIONS	DATE	BY	APP'D
B		EH10-0680-05	
		DATE: 01 JUN 85	
		BY: BSV	