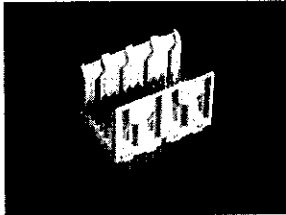




Z-PACK 2mm FutureBus+ Connectors (Continued)
IEC61076-4-0X(48B)

**4 Row — Signal Modules, Vertical Feed-Through Pin Assemblies
(Fixed-Board Connector), 2mm x 2mm Circuit Grid**

**16mm Wide Body Pin
Assemblies
with Feed-Through
Compliant Press-Fit Leads**



Material and Finish:

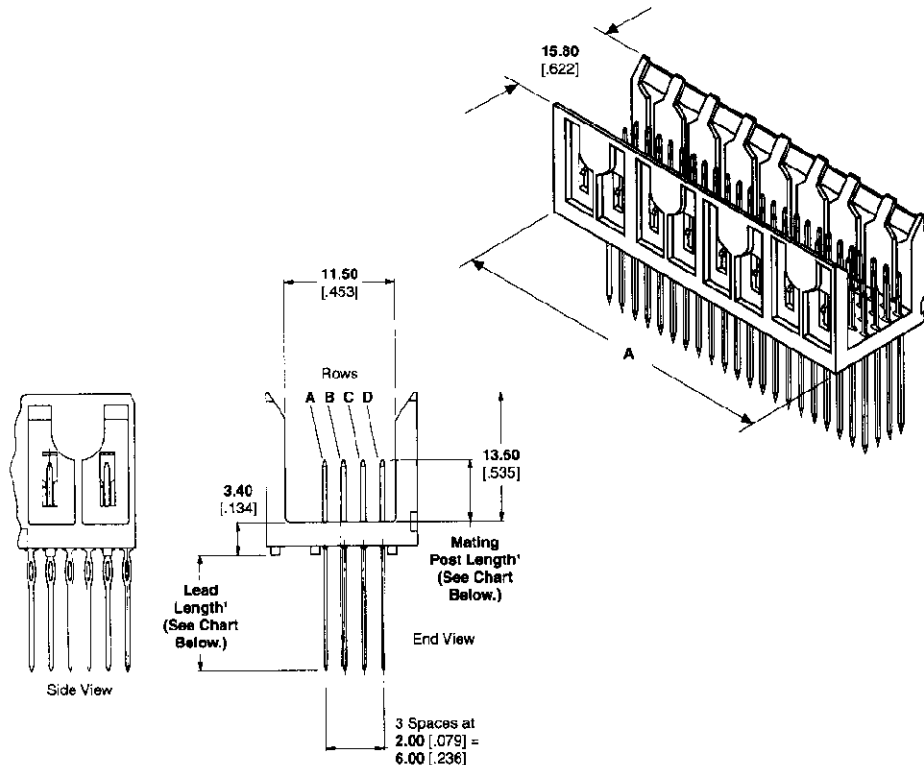
Housing — Liquid crystal polymer
Pin Contacts — Phosphor bronze, entire contact plated gold flash over 0.0008 min., palladium nickel on mating surfaces, with entire contact underplated .00013 nickel

Related Product Data

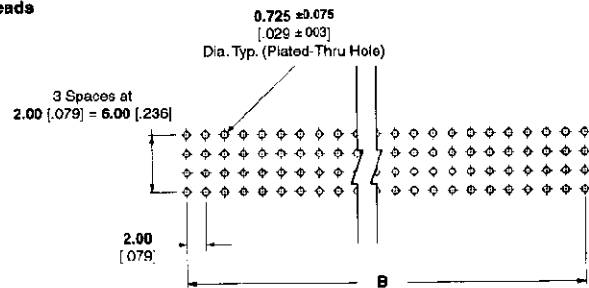
Material Specifications — page 277
Compliant Press-Fit Contact Specifications — page 277
Application Tooling — page 338

Technical Documents

Product Specification
103-1441
Application Specification
114-1075
Instruction Sheets
408-6927, 408-9910, 408-9979
Electrical Performance Report
65476



Compliant Press-Fit Leads



**Recommended PC Board Hole Layout
per IPC-D-300, Type II, Class C (Component Side)**

Vertical Feed-Through Pin Assemblies

Number of Positions	Dimensions A B		Part Numbers				Seating Tooling
			Mating Post Length				
			5.00 [.197]	5.75 [.226]	6.50 [.256]	7.25 [.285]	
			Press-Fit Lead Length				
			11.80 [.465]	17.00 [.669]	13.60 [.535]	15.60 [.614]	
24	11.88 .468	10.00 .034	536531-1	536532-1	536526-1	536533-1	58511-1
48	28.88 .940	22.00 .861	536531-2	536532-2	536526-2	536533-2	58511-2
96	47.88 1.885	46.00 1.811	536531-3	536532-3	536526-3	536533-3	58511-3
192	95.88 3.775	94.00 3.701	536531-4	536532-4	536526-4	536533-4	58511-4

*Sequencing of the mating posts and lead lengths is available. (See Page 289.)
For feed-through shroud availability (See Page 285.)
Contact AMP incorporated for availability.

Backplane Systems

Backplane Connectors