

## 5415085-1 Product Details

[Share](#) [Print](#) [Email](#)



**5415085-1**

TE Internal Number: 5415085-1

 Active

### Decoupled BNC RF Connectors

 Always EU RoHS/ELV Compliant (Statement of Compliance)

#### Product Highlights:

- Applies To Printed Circuit Board
- Connector Impedance = 75 Ω
- Capacitance = 9,400 pF
- With ESD Protection
- Voltage Rating = 1500 VDC

[View all Features](#)

### Quick Links

- ▶ [Pricing & Availability](#)
- ▶ [Search for Tooling](#)
- ▶ [Product Feature Selector](#)
- ▶ [Contact Us About This Product](#)

[Add to My Part List](#)

[Request Sample](#)

[Find Similar Products](#)

[Buy Product](#)

### Documentation & Additional Information

#### Product Drawings:

- [JACK, DECOUPLER, PCB RIGHT ANGLE, STANDARD, ESD PROT...](#) (PDF, English)

#### Catalog Pages/Data Sheets:

- [Decoupled Connectors](#) (PDF, English)

#### Product Specifications:

- None Available

#### Application Specifications:

- None Available

#### Instruction Sheets:

- None Available

#### CAD Files:

- None Available

#### Related Products:

- [Tooling](#)

[List all Documents](#)

### Product Features (Please use the Product Drawing for all design activity)

#### Product Type Features:

- [Profile](#) = Standard
- [PCB Mounting Orientation](#) = Right Angle
- [PCB Mount Retention](#) = With
- [PCB Mount Retention Type](#) = Hold Down Post(s)
- [Clip Style](#) = Standard
- [Mounting Post Style](#) = Standard
- [Dielectric Material](#) = Polymethylpentene
- [Gender](#) = Jack

#### Mechanical Attachment:

- [Panel Mount Retention](#) = With
- [Panel Mount Retention Type](#) = Lockwasher and Nut

#### Electrical Characteristics:

- [Connector Impedance \(Ω\)](#) = 75
- [Capacitance \(pF\)](#) = 9,400
- [Voltage Rating \(VDC\)](#) = 1500

#### Dimensions:

- [Mounting Post Length \(mm \[in\]\)](#) = 4.01 [0.158]
- [Mount Height \(Dim B\) \(mm \[in\]\)](#) = 15.88 [0.625]

#### Body Features:

- [ESD Protection](#) = With
- [Body Material](#) = VALOX

#### Contact Features:

- [Center Contact Plating](#) = Gold (30)

#### Housing Features:

- [Housing Color](#) = Black

#### Industry Standards:

- [RoHS/ELV Compliance](#) = RoHS compliant, ELV compliant
- [Lead Free Solder Processes](#) = Wave solder capable to 240°C, Wave solder capable to 260°C, Wave solder capable to 265°C
- [RoHS/ELV Compliance History](#) = Always was RoHS compliant

#### Conditions for Usage:

- [Applies To](#) = Printed Circuit Board
- [Housing Temperature Rating](#) = Standard

#### Other:

- [Brand](#) = AMP
- [Comment](#) = With ESD protection.

### Corporate Information

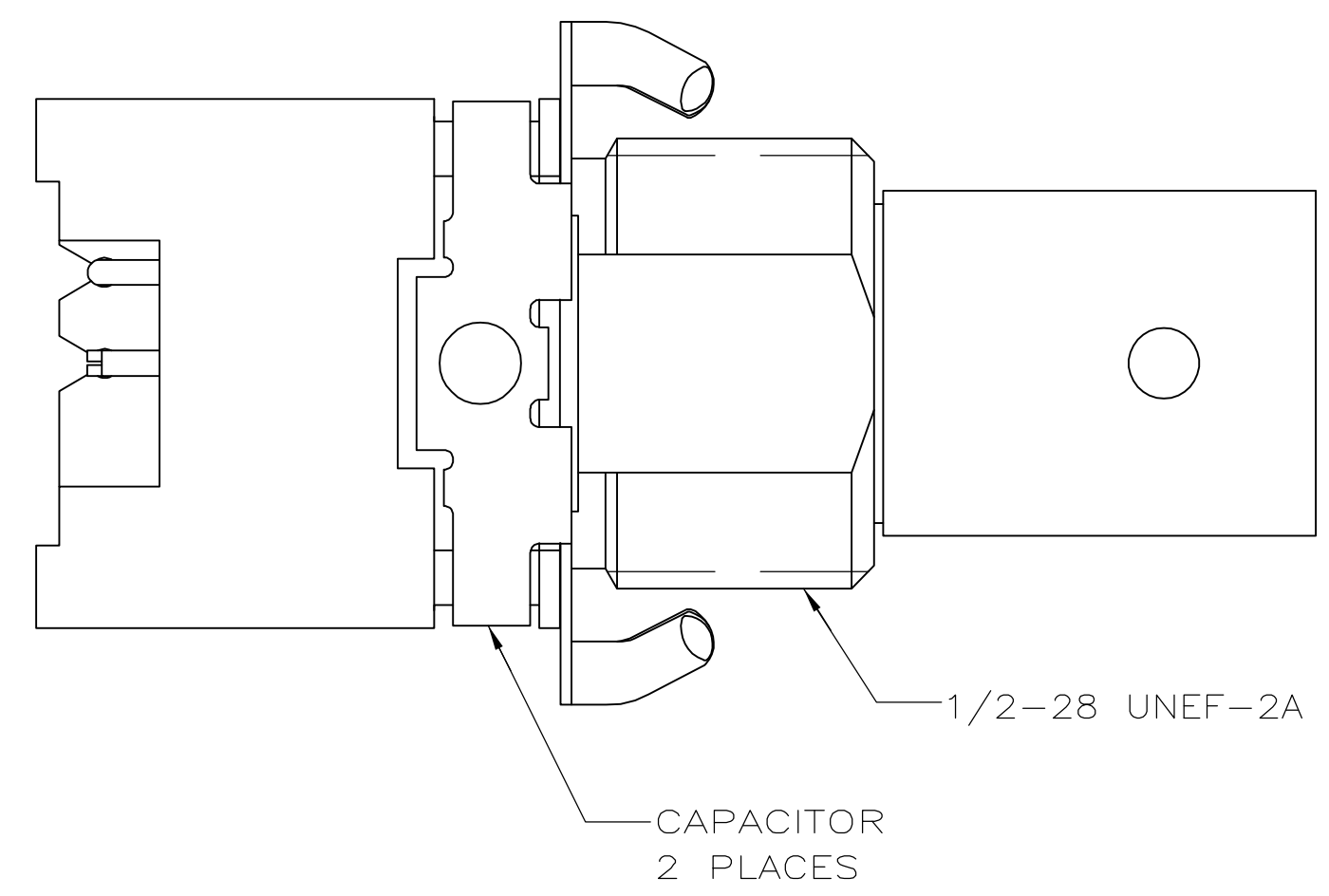
[About TE](#)  
[Investors](#)  
[News Room](#)  
[Supplier Portal](#)  
[Careers](#)

### Quick Links

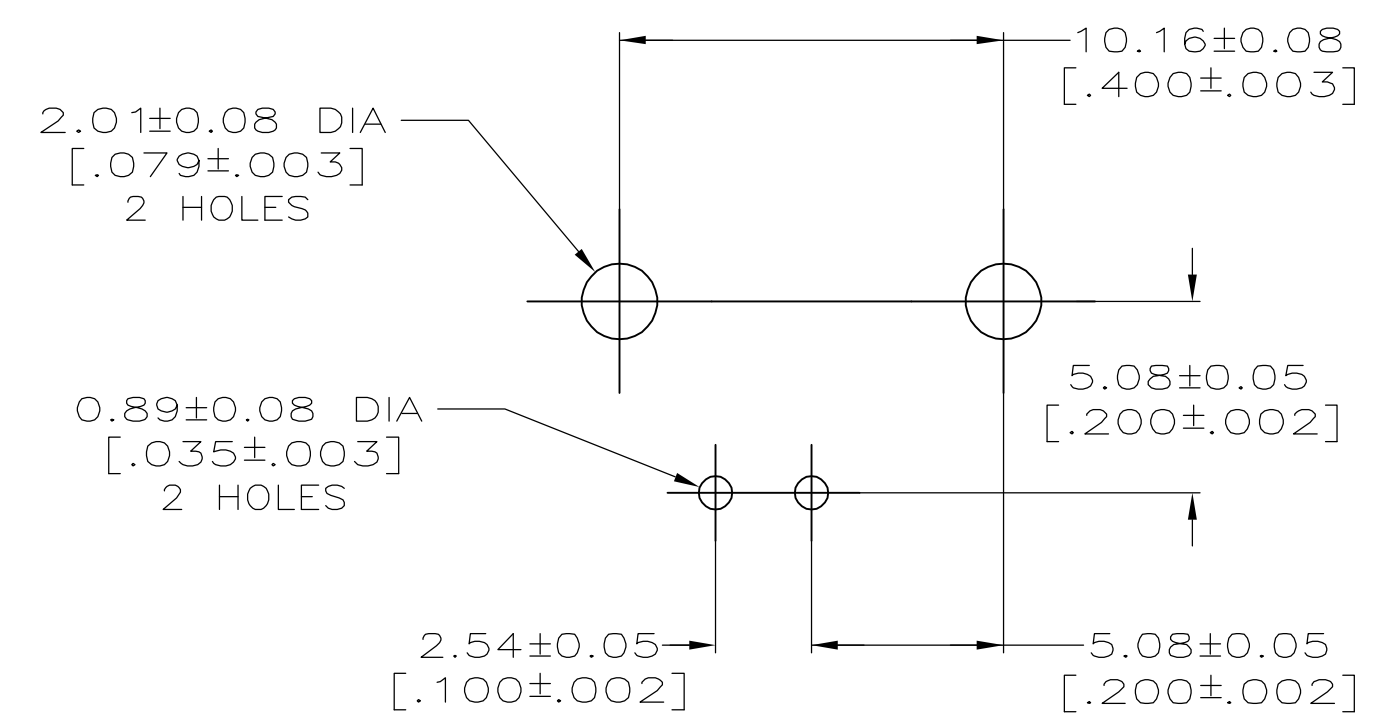
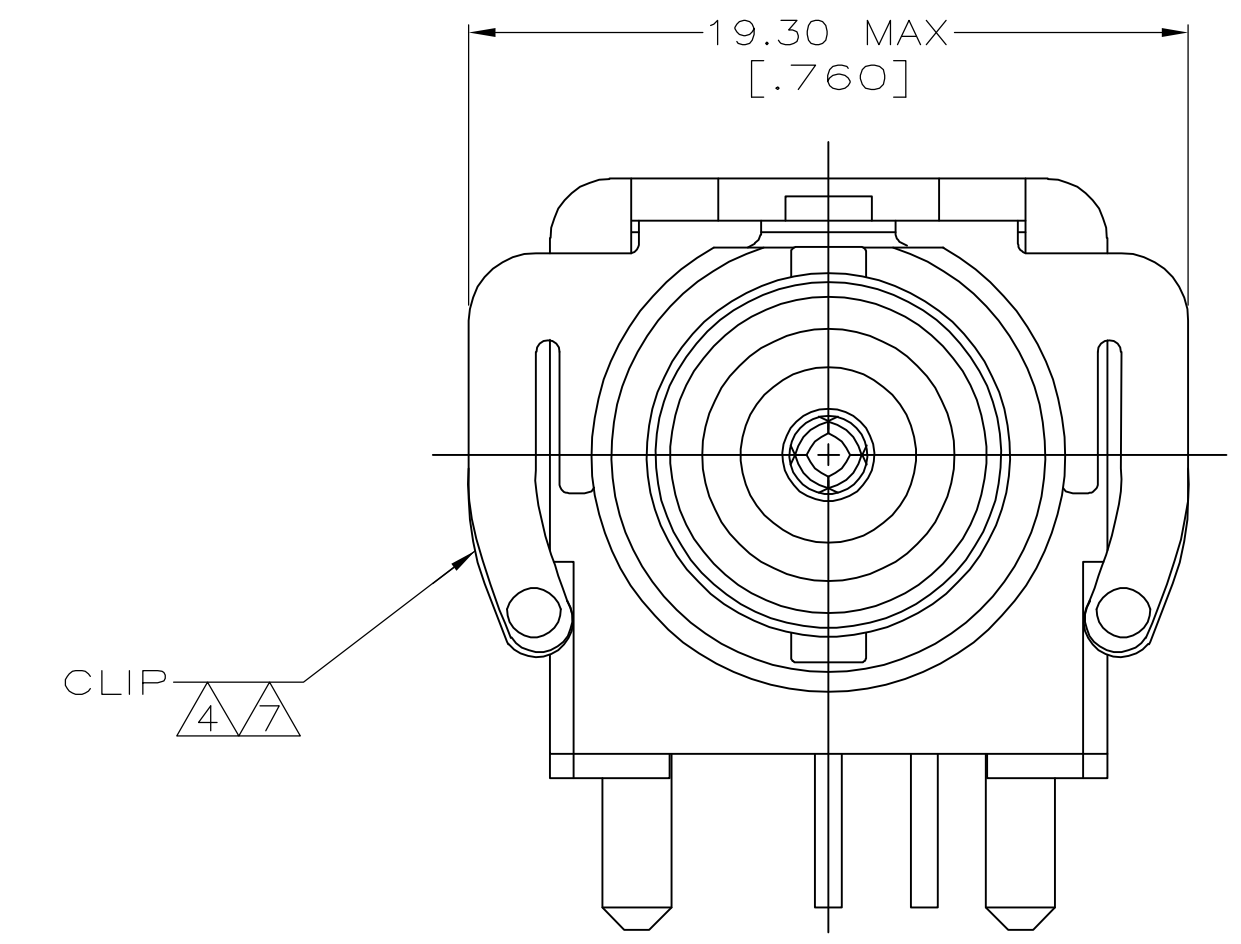
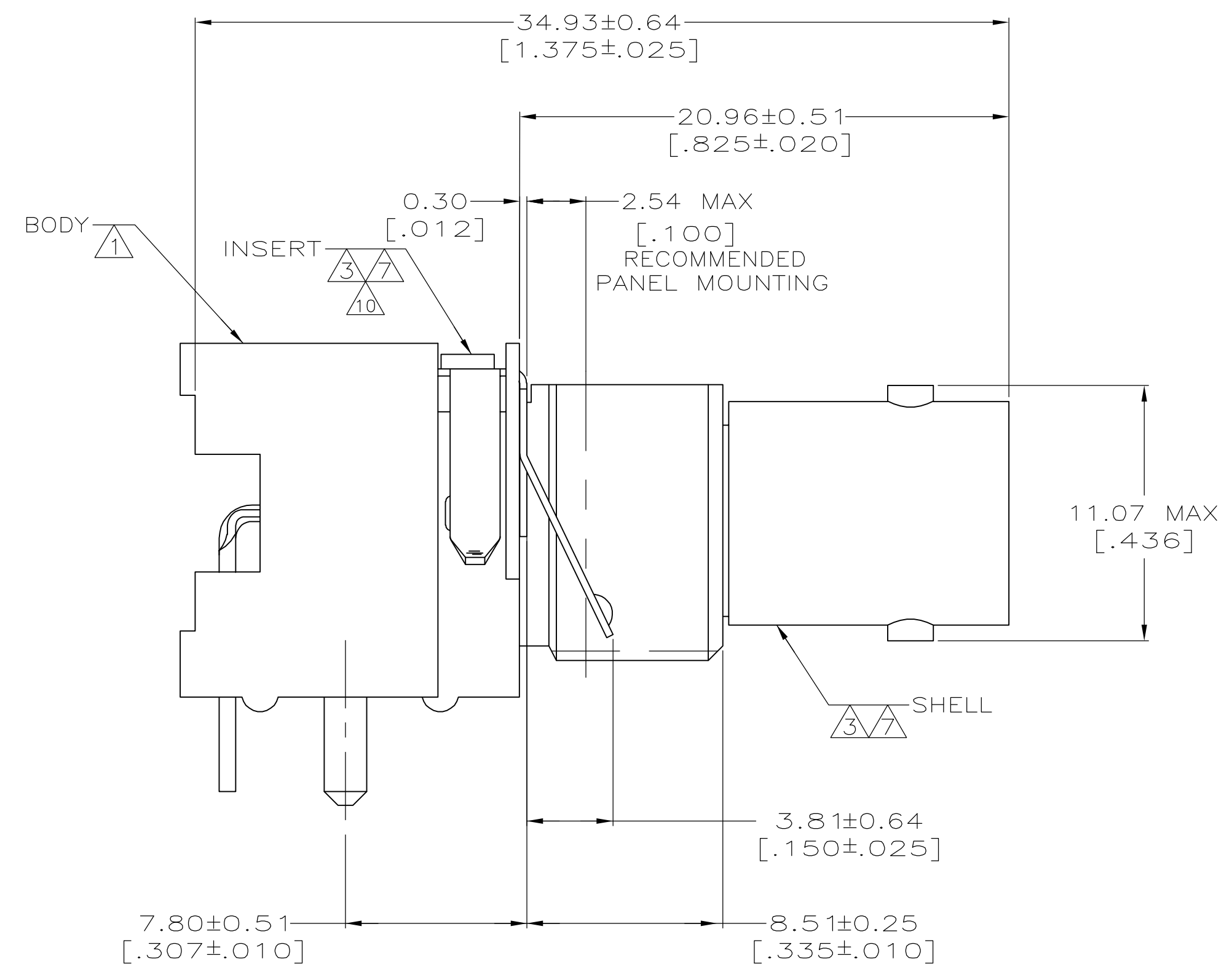
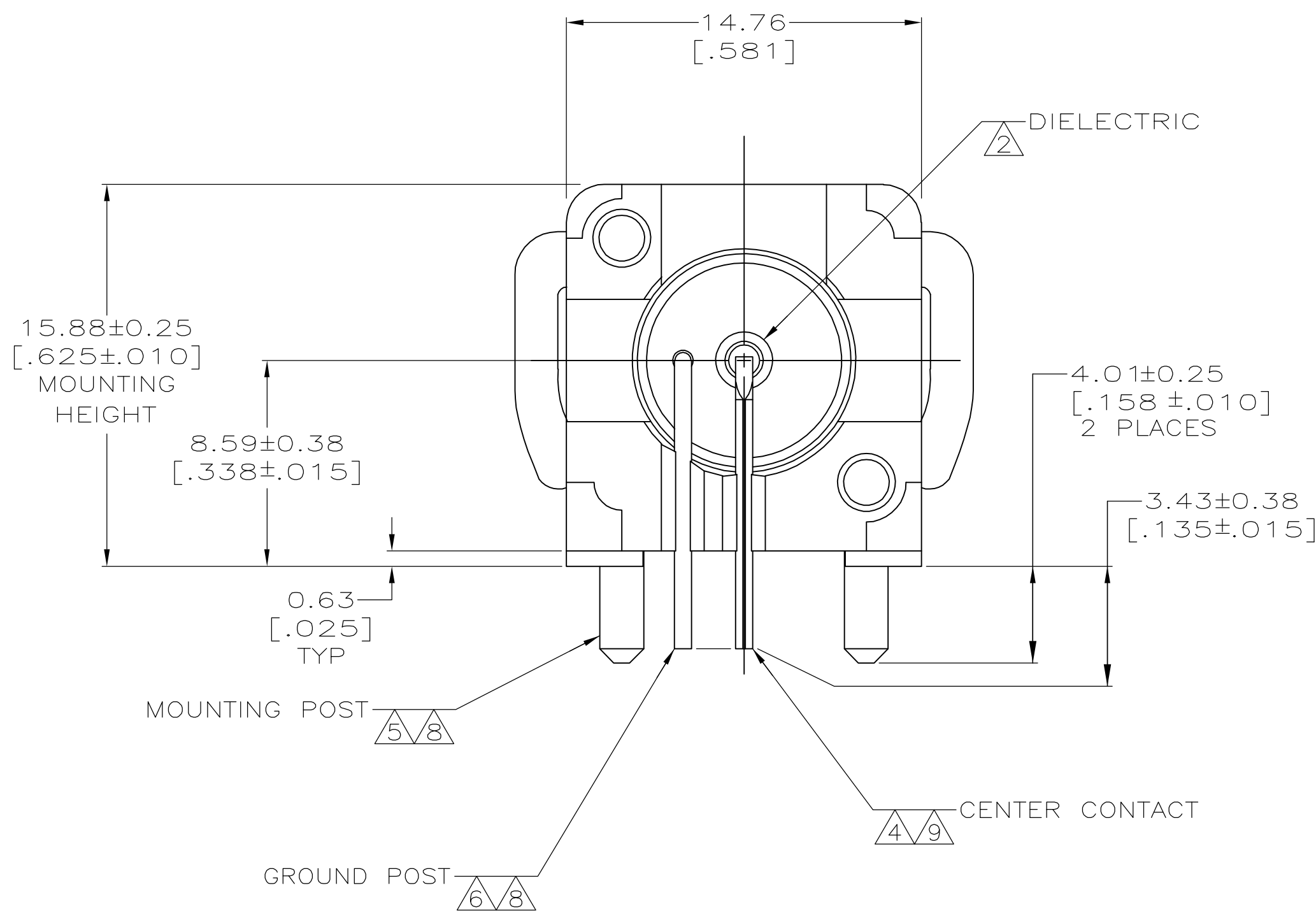
[Distributor Inventory](#)  
[Product Cross Reference](#)  
[Documents & Drawings](#)  
[Product Compliance Support Center](#)  
[Site Map](#)

### Customer Support

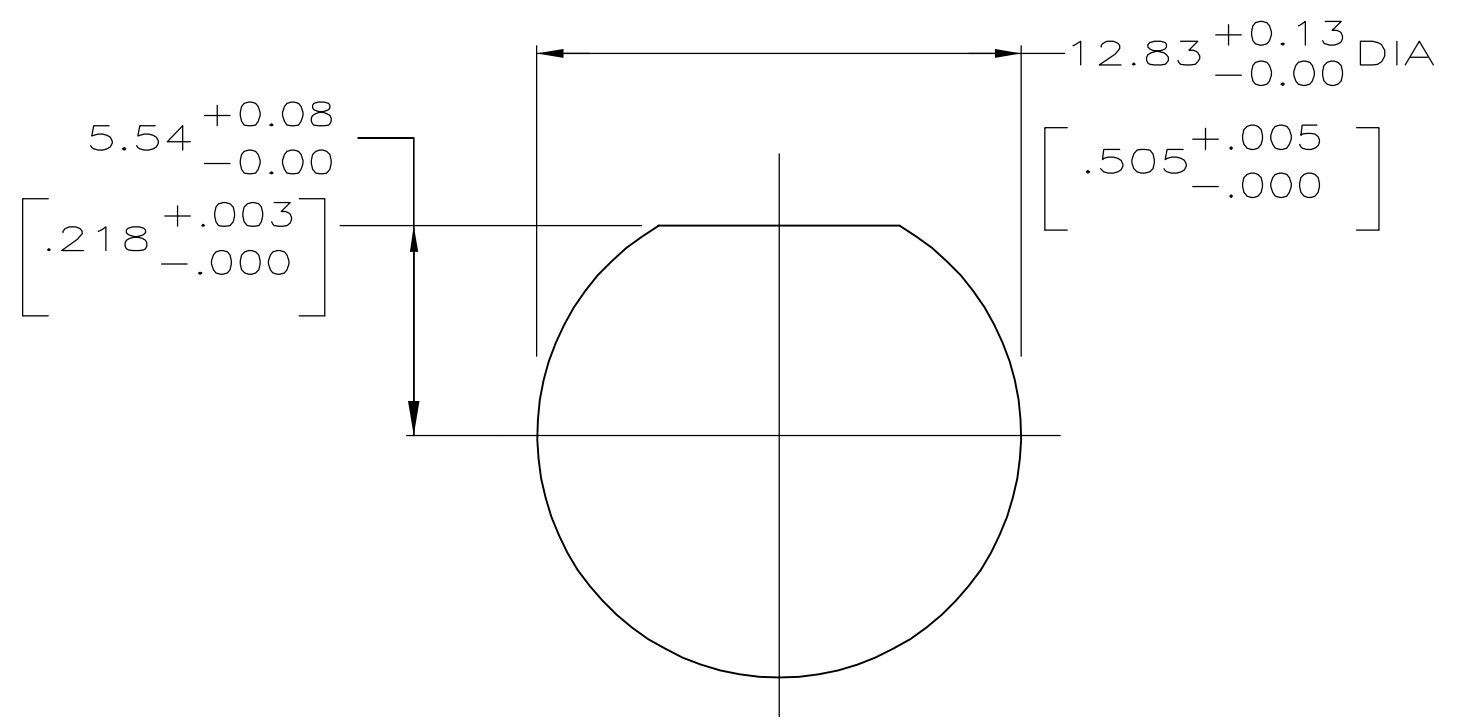
[Email or Chat With Us](#)  
[Find a Phone Number](#)  
[Knowledge Base](#)  
[Manage Your Account](#)



- 1 POLYESTER, PBT, BLACK, PER MIL-M-24519.
- 2 POLYMETHYLPENTENE GENERAL PURPOSE.
- 3 ZINC PER QQ-Z-363.
- 4 PHOSPHOR BRONZE PER QQ-B-750.
- 5 BRASS PER QQ-B-626.
- 6 BRASS PER ASTM-B-453.
- 7 NICKEL PL PER QQ-N-290.
- 8 TIN PLATE PER ASTM-B-545.
- 9 SELECTIVELY GOLD PLATED ON INTERFACE AREA PER ASTM-B-488, 0.76 [.000030] THICK, TIN PLATED ON SOLDER TAIL PER ASTM-B-545, ALL OVER NICKEL PLATE PER QQ-N-290.
- 10 ESD DEVICE, VOLTAGE BREAKDOWN <3.5KVDC.



PCB CONFIGURATION



RECOMMENDED PANEL CUTOUT

9400 pf, 1500 VDC	5415085-1
CAPACITANCE & VOLTAGE	PART NO

THIS DRAWING IS A CONTROLLED DOCUMENT.		DWN J. ALCORTA - 27APR2005	Tyco Electronics Corporation Harrisburg, PA 17105-3608
DIMENSIONS: mm [INCHES]		CHK J. HAVENER 27APR2005	
TOLERANCES UNLESS OTHERWISE SPECIFIED:		APP'D J. LIPPERT 27APR2005	NAME
0 PLC ± -	1 PLC ± -	PRODUCT SPEC	JACK, DECOUPLER, PCB
2 PLC ± -	3 PLC ± 0.20 [.008]	APPLICATION SPEC	108-1269
4 PLC ± -	ANGLES ± -	SIZE	JACK, DECOUPLER, PCB
MATERIAL SEE NOTES 1 - 6	FINISH SEE NOTES 7,8,9,10	WEIGHT	RIGHT ANGLE, STANDARD, ESD PROTECTED, 75 OHM BNC
CUSTOMER DRAWING		A1 00779	RESTRICTED TO
SCALE 5:1		SHEET 1 OF 1	REV A