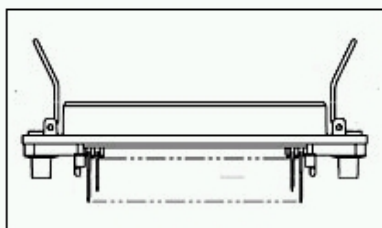
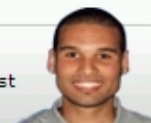


## 5554216-3 Product Details

### Have a Question?

Chat with a Product Information Specialist



**5554216-3**

TE Internal Number: 5554216-3

**Active**

### 2.16 [.085] Printed Circuit Board Connectors & Cable Assemblies

Always EU RoHS/ELV Compliant ([Statement of Compliance](#))

#### Product Highlights:

- Connector
- Housing Gender = Receptacle
- 2.16 mm Centerline
- CHAMP Product Line
- 50 Positions

[View all Features](#)

#### Quick Links

- ▶ [Check Pricing & Availability](#)
- ▶ [Search for Tooling](#)
- ▶ [Product Feature Selector](#)
- ▶ [Contact Us About This Product](#)

[Add to My Part List](#) [Request Sample](#) [Find Similar Products](#) [Buy Product](#)

#### Documentation & Additional Information

Documents are temporarily unavailable. We are working hard to correct the problem. Please try again later.

#### Additional Information:

- [Product Line Information](#)

#### Additional Product Images:

- [Recommended PC Board Mtg Dim](#)

#### Related Products:

- [Tooling](#)

#### Product Features (Please use the Product Drawing for all design activity)

##### Product Type Features:

- Product Type = Connector
- Product Line = CHAMP
- [PCB Mount Style](#) = Vertical
- [Orientation](#) = Standard
- [Profile](#) = Standard
- Mating Connector Lock = With
- Mating Connector Lock Type = Bail Lock
- [PCB Mount Retention](#) = With
- [Grounded](#) = No
- Color = Black
- Shield Material = Die Cast Metal
- Boss on Shield = With

##### Mechanical Attachment:

- [Panel Attachment](#) = With
- Panel Attachment Style = Rear Mount

##### Electrical Characteristics:

- [Shielded](#) = Yes

##### Termination Related Features:

- Termination Post Length (mm [in]) = 3.43 [0.135]
- Solder Tail Contact Plating = Tin

##### Body Related Features:

- Centerline (mm [in]) = 2.16 [0.085]
- [Number of Positions](#) = 50
- [PCB Mount Retention Type](#) = Boardlock(s)
- Shield Plating = Nickel

##### Contact Related Features:

- [Contact Plating, Mating Area, Material](#) = Gold, Gold or Gold Flash over Palladium Nickel
- Contact Base Material = Copper Alloy

##### Housing Related Features:

- Housing Gender = Receptacle
- Housing Material = Thermoplastic - GF

##### Industry Standards:

- [RoHS/ELV Compliance](#) = RoHS compliant, ELV compliant
- [Lead Free Solder Processes](#) = Wave solder capable to 240°C, Wave solder capable to 260°C, Wave solder capable to 265°C
- RoHS/ELV Compliance History = Always was RoHS compliant

##### Operation/Application:

- Application = SCSI

##### Other:

- Brand = AMP

BOOKMARK

#### Corporate Information

[Who We Are](#)  
[Investors](#)  
[News Room](#)  
[Supplier Portal](#)  
[Careers](#)

#### Quick Links

[Check Distributor Inventory](#)  
[Cross Reference](#)  
[Find Documents & Drawings](#)  
[Product Compliance Support Center](#)  
[Site Map](#)

#### Customer Support

[Email or Chat with Us](#)  
[Find a Phone Number](#)  
[Search Knowledge Base](#)  
[Manage Your Account](#)

#### Sign up for our eNewsletter

Enter your email address

Follow us on: