

Distributed by:

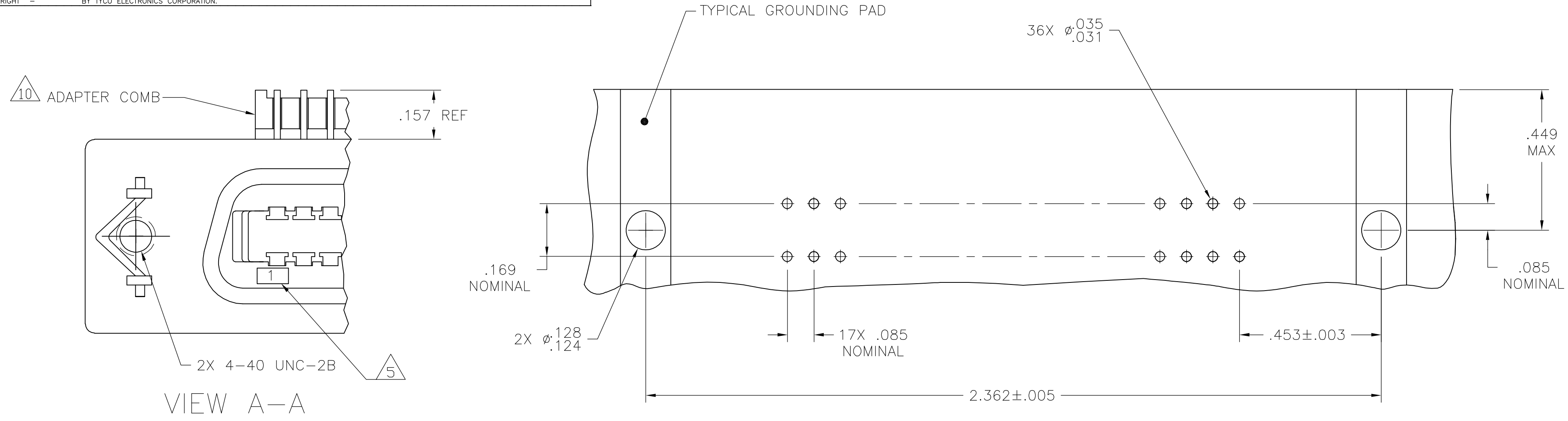
**JAMECO**<sup>®</sup>  
ELECTRONICS

**www.Jameco.com ♦ 1-800-831-4242**

The content and copyrights of the attached  
material are the property of its owner.

Jameco Part Number 958041

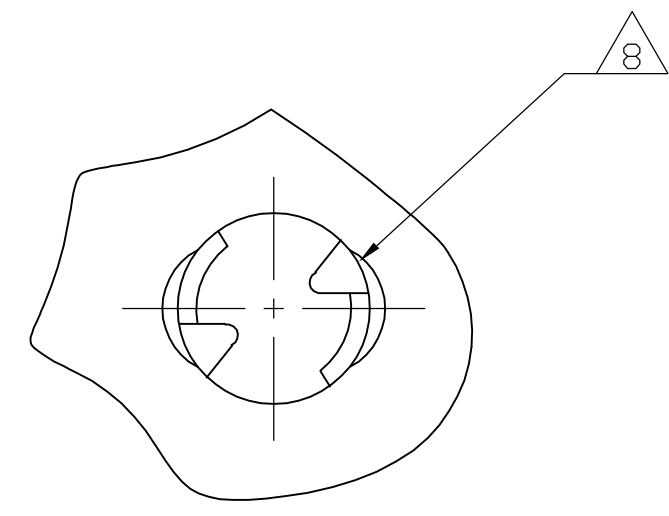
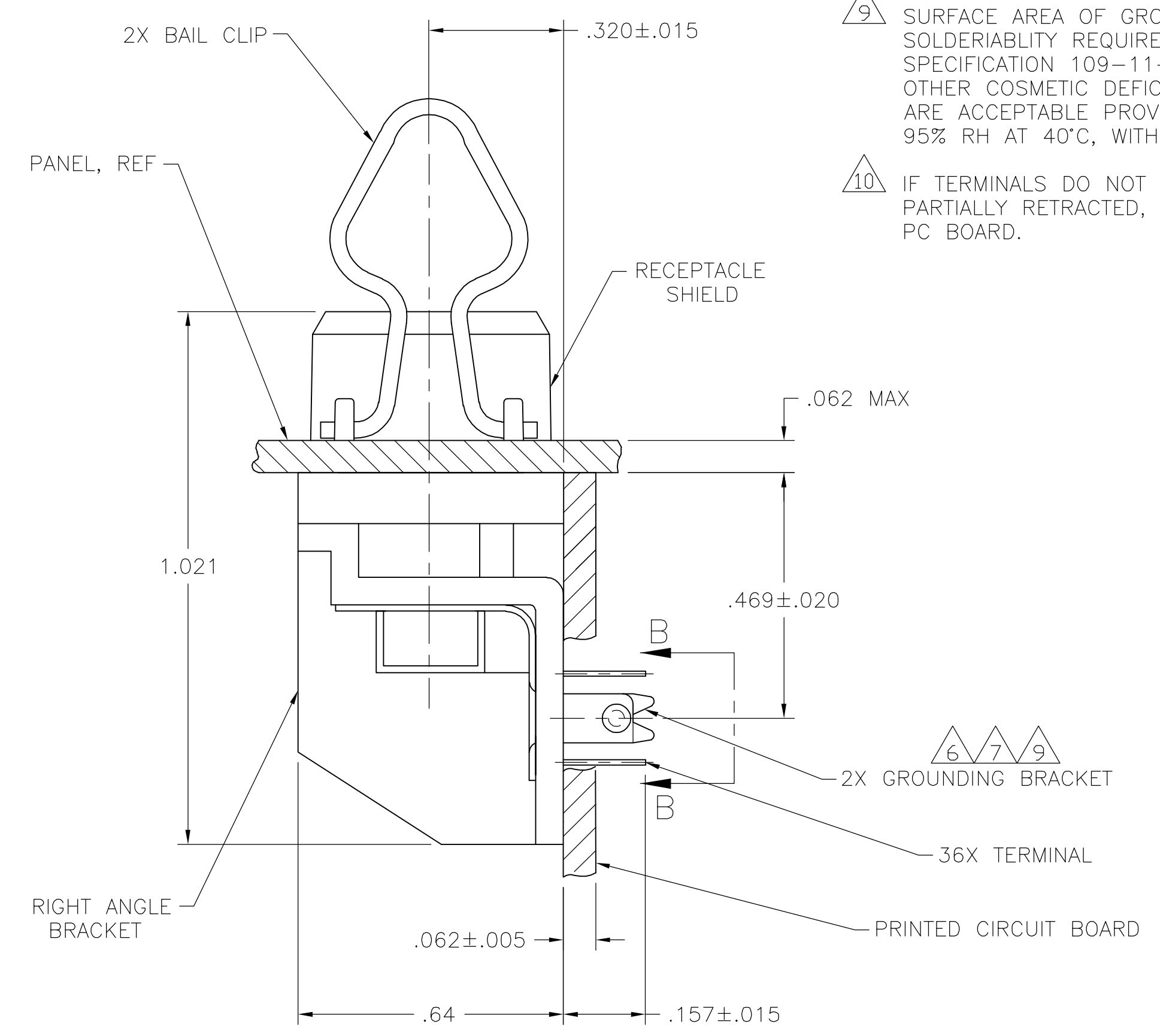
LOC		DIST		REVISIONS			
F	LTR	DATE	DRN	APVD			
0		RELEASED PER EC OS13-0542-04	24AUG05	BM	WM		



SUGGESTED PRINTED CIRCUIT BOARD MOUNTING DIMENSIONS



SUGGESTED REAR PANEL MOUNTING CUTOUT DIMENSIONS



DETAIL B-B

- 1 MATERIAL:  
 HOUSING, RIGHT ANGLE BRACKET, ADAPTER COMB AND TERMINAL SUPPORT PLATE: THERMOPLASTIC, BLACK.  
 RECEPTACLE SHIELD: BRIGHT NICKEL OVER COPPER PLATED DIE CASTING.  
 TERMINALS: TAILS TIN OVER NICKEL PLATED HIGH STRENGTH COPPER ALLOY.  
 MATING SURFACE: LOCALIZED GOLD OVER NICKEL.  
 GROUND BRACKET: TIN PLATED CARBON STEEL.
2. THE CONTACT SURFACES OF THE TERMINALS ARE COATED WITH LUBRICANT.
3. CENTER TO CENTER SPACING OF TERMINALS IS 0.85 NOMINAL.
4. ALL DIMENSIONS ARE MAXIMUM UNLESS OTHERWISE SPECIFIED.
- 5 TERMINAL 1 IS LOCATED IN THIS ROW FOR STANDARD ORIENTATION, SEE DETAIL A.
- 6 GROUNDING BRACKET RETAINS CONNECTOR IN .062 THICK PC BOARD WITHOUT ADDITIONAL HARDWARE.
- 7 GROUNDING BRACKET LOCATES CONNECTOR FLUSH WITH TOP OF PC BOARD AND SPRING LOCKS BENEATH.
- 8 CYLINDRICAL SHAPE OFFERS 180° OF SOLDERING SURFACE.
- 9 SURFACE AREA OF GROUNDING BRACKET BELOW PC BOARD SHALL PASS SOLDERABILITY REQUIREMENTS IN ACCORDANCE WITH AMP SPECIFICATION 109-11-2, DISCOLORATION, SCRATCHES, SPOTS AND OTHER COSMETIC DEFICIENCIES TYPICAL OF BARREL PLATING PROCESS ARE ACCEPTABLE PROVIDING PARTS PASS 24 HOUR EXPOSURE AT 95% RH AT 40°C, WITHOUT EVIDENCE OF CORROSION.
- 10 IF TERMINALS DO NOT EXTEND BELOW COMB, THEN COMB SHALL BE PARTIALLY RETRACTED, BEFORE INSERTING CONNECTOR INTO THE PC BOARD.

5555119-1  
PART NUMBER

THIS DRAWING IS A CONTROLLED DOCUMENT.		DWN BY: MCMASTER	24AUG05	Tyco Electronics Corporation Harrisburg, Pa 17105-3608
DIMENSIONS: INCHES		CHK: W	24AUG05	
TOLERANCES UNLESS OTHERWISE SPECIFIED:		PRODUCT SPEC	NAME	RECEPTACLE ASSEMBLY, SHIELDED, 36 POSITION, RIGHT ANGLE, W/ BOARD LOCK & BAIL LOCK, FLUSH MOUNTING CHAMP
0 PLC ± -		APPLICATION SPEC	SIZE	
1 PLC ± -		WEIGHT	SCALE	RESTRICTED TO CUSTOMER DRAWING
2 PLC ± -		APPROVED	DATE	
3 PLC ± -		DATE	SCALE	A1 00779 ©=5555119 SCALE 4:1 SHEET 1 OF 1 REV 0
4 PLC ± -		DATE	SCALE	
ANGLES ± -		DATE	SCALE	
FINISH		DATE	SCALE	