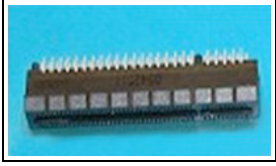


5645235-4 Product Details



5645235-4

TE Internal Number: 5645235-4



Standard Edge II Card Edge & Power Connectors

 Always EU RoHS/ELV Compliant (Statement of Compliance)

Product Highlights:

- Connector
- Product Series = Standard Edge II
- Type of Connector = Standard
- 2.54 mm Centerline
- 18 Dual Positions

Documentation & Additional Information

Product Drawings:

- [CONNECTOR ASSEMBLY, STANDARD EDGE II, 2.54 \[.100\] C...](#) (PDF, English)

Catalog Pages/Data Sheets:

- None Available

Product Specifications:

- [Connector, Standard Edge](#) (PDF, English)

Application Specifications:

- None Available

Instruction Sheets:

- None Available

CAD Files: (CAD Format & Compression Information)

- [2D Drawing](#) (DXF, Version B)
- [3D Model](#) (IGES, Version B)
- [3D Model](#) (STEP, Version B)

Related Products:

- [Tooling](#)

Product Features (Please use the Product Drawing for all design activity)

Product Type Features:

- Product Type = Connector
- Product Series = Standard Edge II
- Type of Connector = Standard
- Post Type = Solder Post
- PCB Mounting Orientation = Vertical
- PCB Mount Retention = With
- PCB Retention Location = 3-6, 31-34

Mechanical Attachment:

- Mounting Ears = Without

Electrical Characteristics:

- High Current = No

Termination Features:

- Termination Post Length (mm [in]) = 3.18 [0.125]
- Solder Tail Contact Plating = Tin

Body Features:

- Retention Latch = Without

Contact Features:

- Contact Plating, Mating Area, Material = Gold (30)
- Contact Base Material = Phosphor Bronze
- Underplate Material = Nickel

Housing Features:

- Centerline (mm [in]) = 2.54 [0.100]
- Housing Material = Polyester GF
- Housing Color = Black
- UL Flammability Rating = UL 94V-0

Configuration Features:

- Number of Dual Positions = 18
- Positions Unloaded = None

Industry Standards:

- RoHS/ELV Compliance = RoHS compliant, ELV compliant
- Lead Free Solder Processes = Wave solder capable to 240°C, Wave solder capable to 260°C, Wave solder capable to 265°C
- RoHS/ELV Compliance History = Always was RoHS compliant

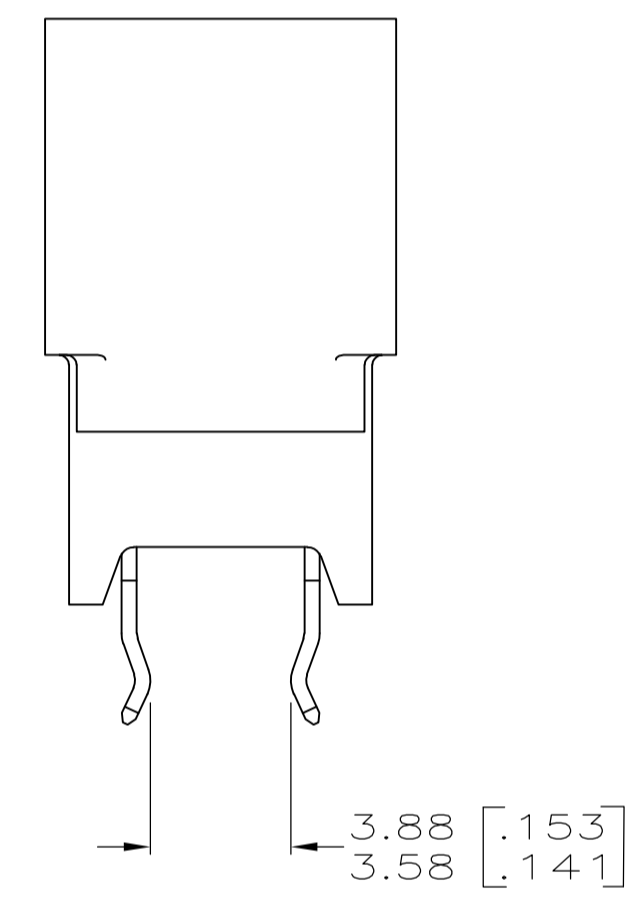
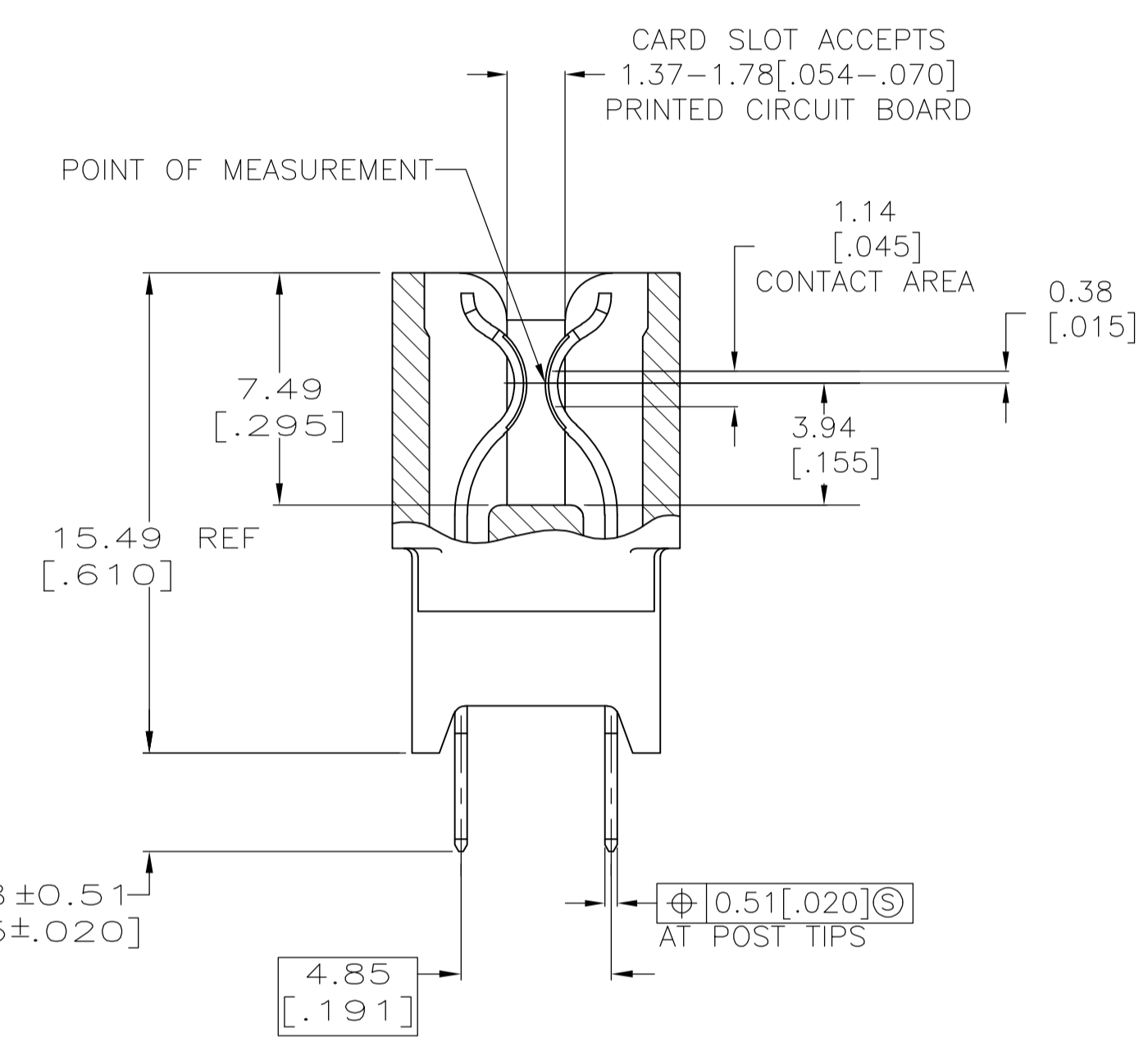
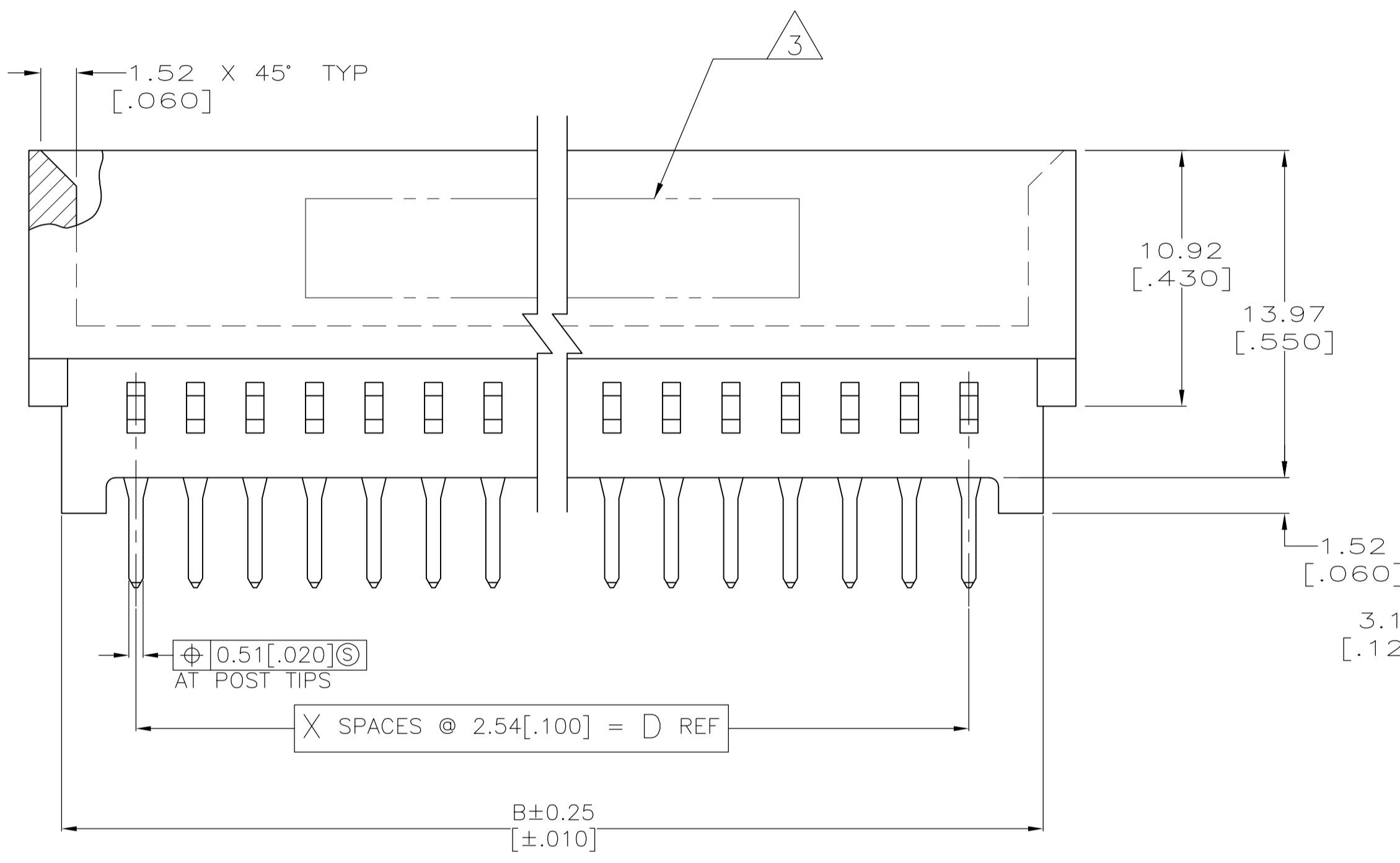
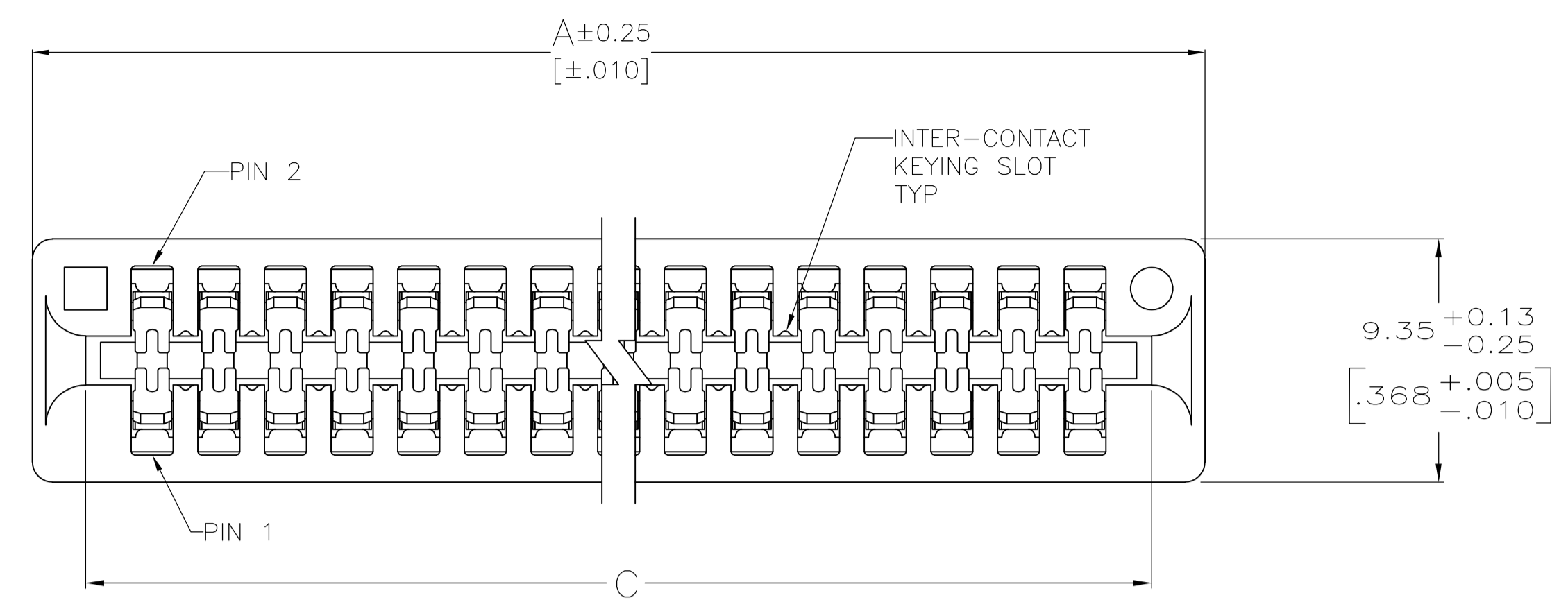
Identification Marking:

- Keyed Position = 0

Other:

- Brand = AMP

LOC		DIST		REVISIONS			
P	LTR	DESCRIPTION	DATE	DMN	APVD		
C		ECO-07-029491	29FEB2008	LAM	AWF		
C1		REVISED PER ECO-09-024927	10NOV09	KK	AEG		



BOARD RETENTION FEATURE
(SEE TABLE FOR LOCATION)

- MATERIAL:
HOUSING: GLASS FILLED POLYESTER; COLOR: BLACK.
CONTACT: PHOS BRONZE
- FINISH:
0.00076[.000030] MIN GOLD PLATE IN CONTACT AREA,
0.00254[.000100] MIN MATTE TIN ON SOLDER POSTS, ALL
OVER 0.00127[.000050] MIN NICKEL
- AMP LOGO, TE PART NUMBER, DATE CODE AND CSA LOGO INK
STAMPED WHITE (HOT STAMPED OR LAZER PRINTED) IN THE APPROXIMATE
AREA SHOWN, EITHER SIDE PERMISSABLE, WHEN HOUSING SIZE PERMITS
- RECOMMENDED PCB FINISHED HOLE DIAMETER = 1.02±0.08
[.040±.003]
- THE RETENTIVE FEATURE OF THIS CONNECTOR IS DESIGNED FOR
FULL SEATING IN 1.57±0.20[.062±.008] THICK CIRCUIT BOARDS.
FOR APPLICATIONS IN BOARDS OF OTHER THICKNESSES, CONTACT
TYCO ELECTRONICS
- OBsolete PARTS: OBSOLETE CIS STREAMLINING PER D.RENAUD/D.SINISI

OBSOLETE	2-5645235-1
OBSOLETE	1-5645235-7
OBSOLETE	1-5645235-3

PART NUMBER

OBSOLETE	BOARD RETENTION FEATURE LOCATION	D	C	B	A	X	NO OF POSN	PART NUMBER
		3-6, 55-58, 63-66, 115-118	149.86 [5.900]	154.94 [6.100]	156.21 [6.150]	159.00 [6.260]	59	60
	3-6, 65-68	86.36 [3.400]	91.44 [3.600]	92.71 [3.650]	95.50 [3.760]	34	35	1-5645235-1
	3-6, 35-38	53.34 [2.100]	58.42 [2.300]	59.69 [2.350]	62.48 [2.460]	21	22	5645235-7
	3-6, 31-34	43.18 [1.700]	48.26 [1.900]	49.53 [1.950]	52.32 [2.060]	17	18	5645235-4
	3-6, 49-52, 95-98	124.46 [4.900]	129.54 [5.100]	130.81 [5.150]	133.60 [5.260]	49	50	5645235-3
	3-6, 29-32 OR 31-34, 57-60	76.20 [3.000]	81.28 [3.200]	82.55 [3.250]	85.34 [3.360]	30	31	5645235-1

THIS DRAWING IS A CONTROLLED DOCUMENT.

DIMENSIONS: mm	TOLERANCES UNLESS OTHERWISE SPECIFIED:	DRAWING NO	RESTRICTED TO
0 PLC ± -	1 PLC ± -	114-13018	
2 PLC ± 0.13 [.005]	3 PLC ± -	108-9039	
4 PLC ± -	ANGLES ± °	114-13018	
MATERIAL SEE NOTE 1	FINISH SEE NOTE 2	WEIGHT -	SCALE 5:1
CUSTOMER DRAWING		SIZE A1	SHEET 1 OF 1

AWF/L.A.MAYER 29FEB2008
 A.W.FRANTUM 29FEB2008
 S.FLICKINGER 29FEB2008

Tyco Electronics Corporation
 Harrisburg, Pa 17105-3608

CONNECTOR ASSEMBLY,
 STANDARD EDGE II,
 2.54 [.100] CENTERLINE

00779 ©=5645235