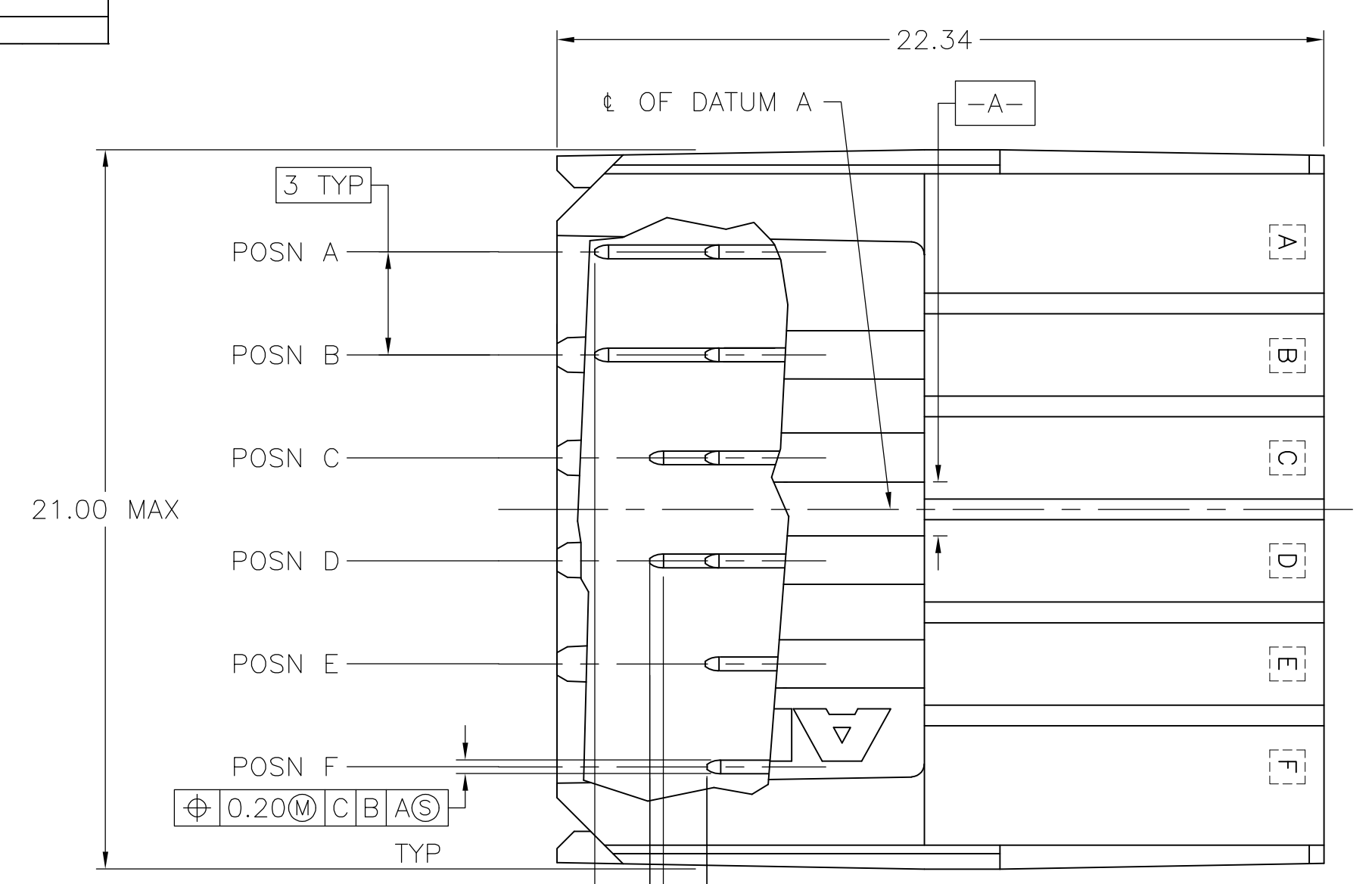
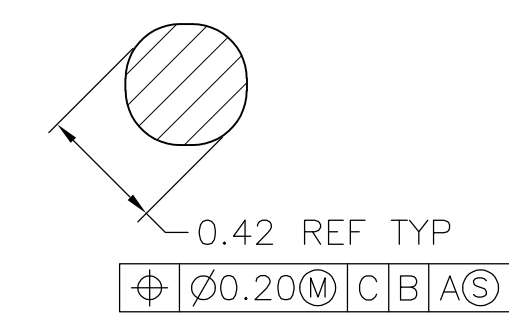


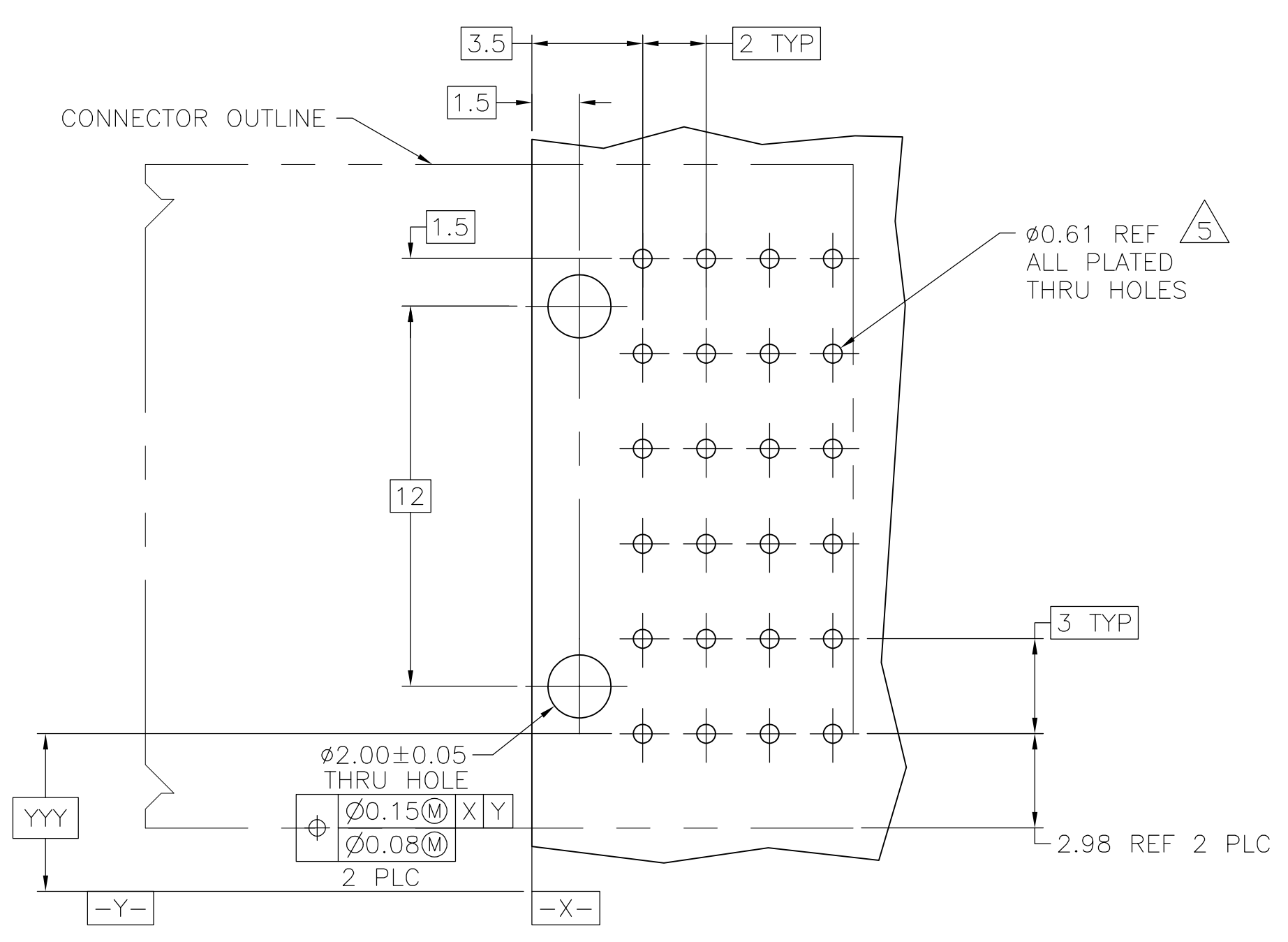
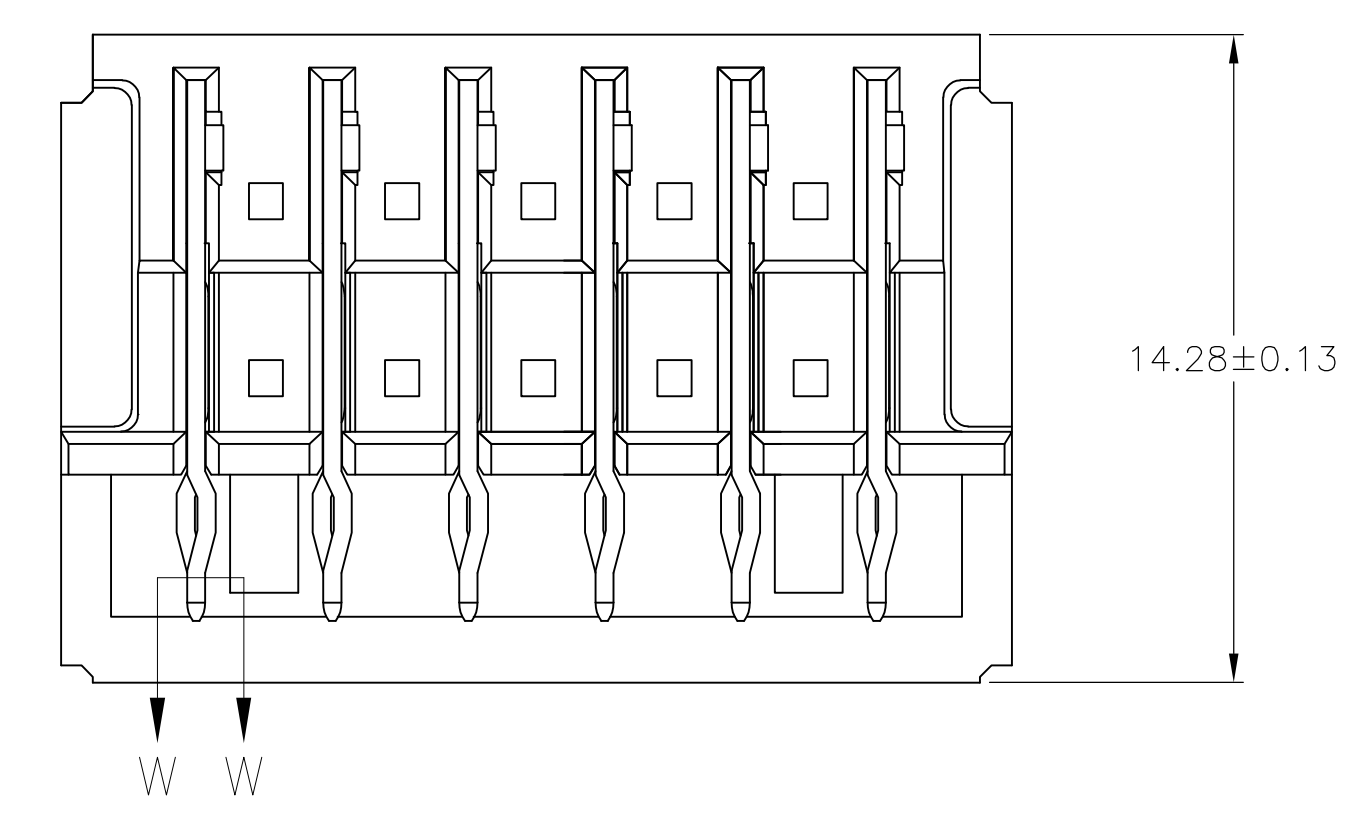
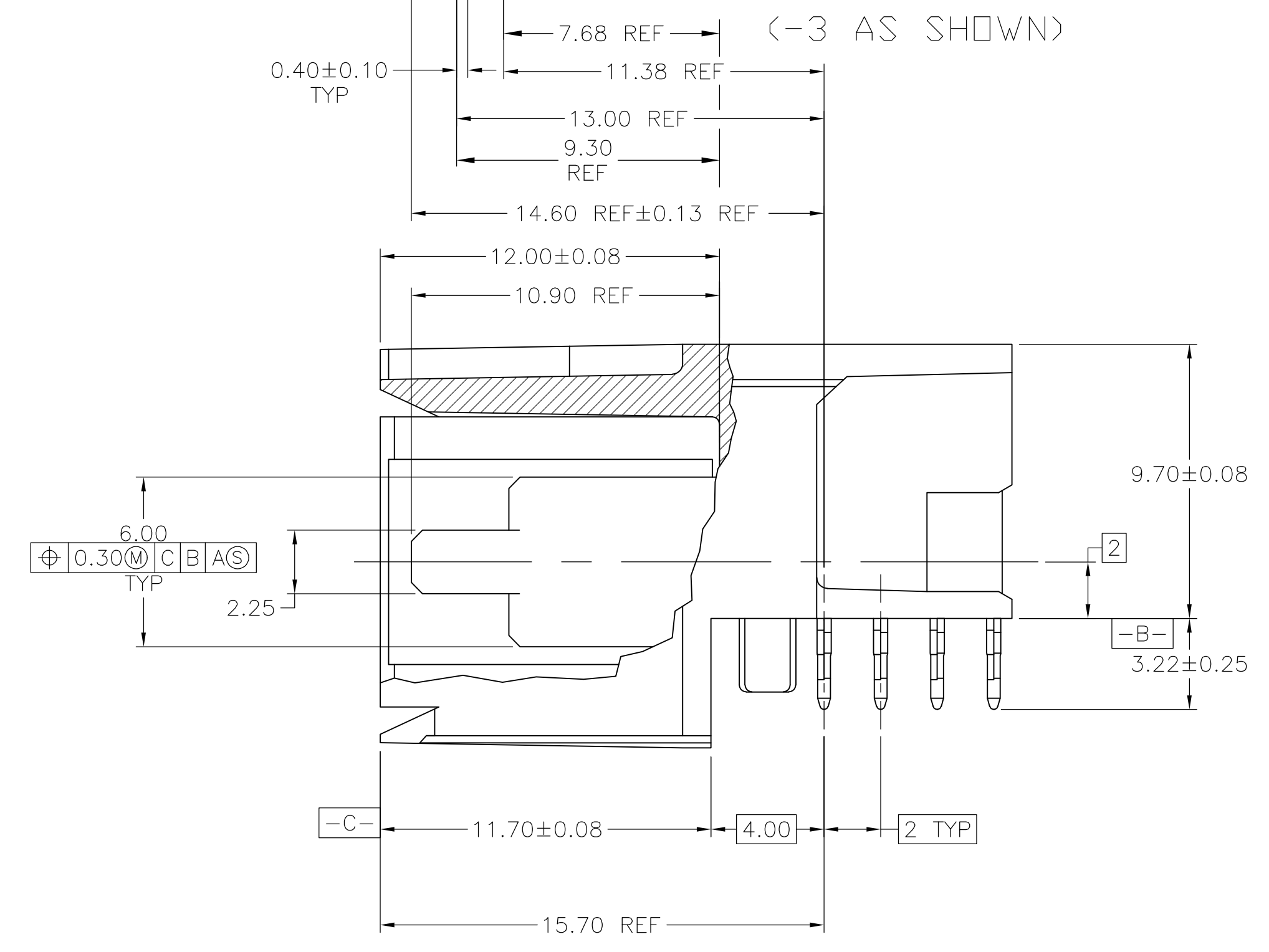
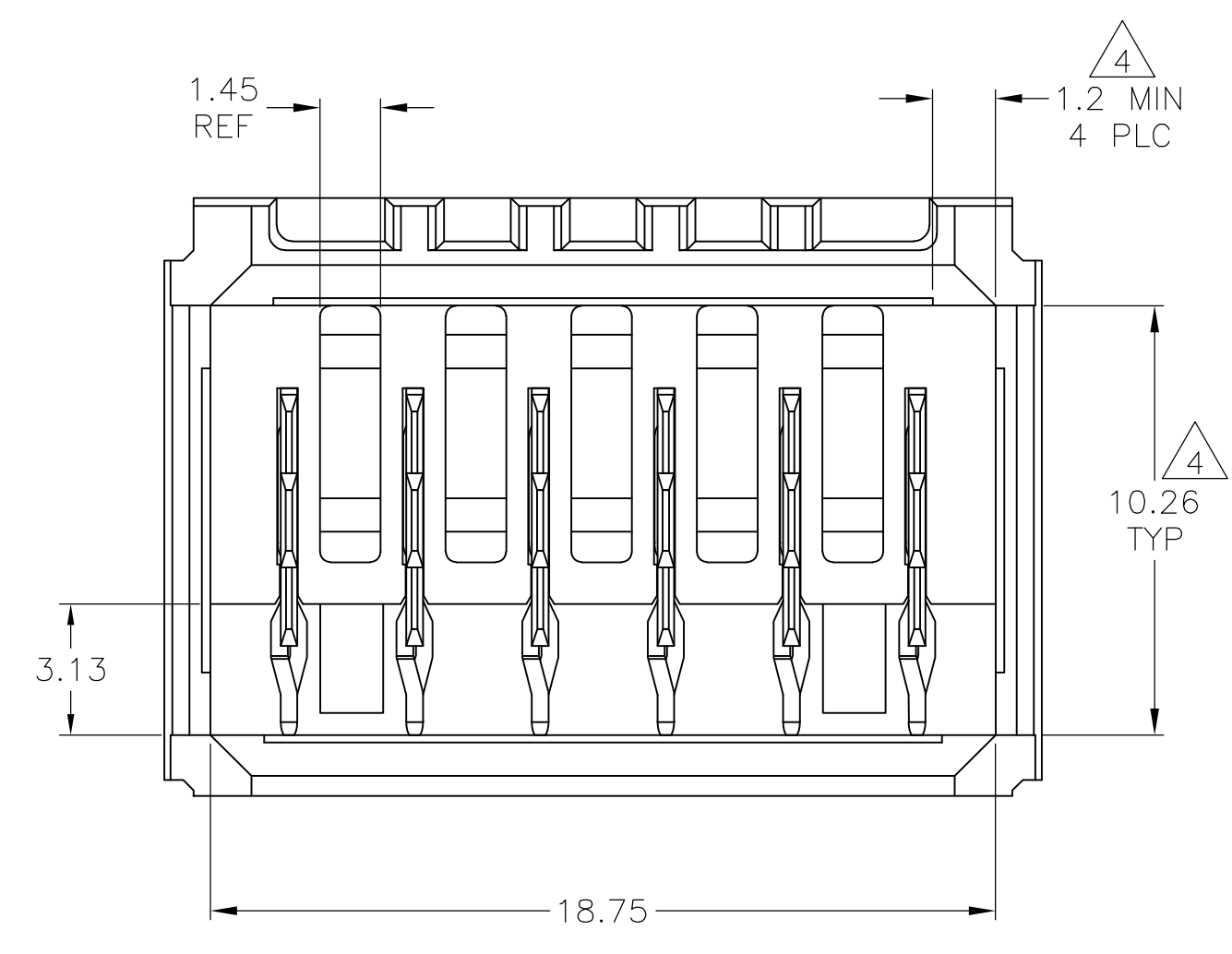
| LOC | | DIST | | REVISIONS | | | |
|-----|---------------------------|---------|------|-----------|-----|-------|--|
| AD | 00 | REV | DATE | BY | CHK | APP'D | |
| E1 | REVISED PER ECO-11-004835 | 11MAR11 | RK | HMR | | | |



- 1 MATERIAL: HOUSING: POLYESTER. COLOR: GRAY. UL 94V-0. CONTACT: PHOSPHOR BRONZE.
- 2 FINISH: CONTACT MATING AREA: 1.27µm MIN GOLD OR 0.08µm MIN GOLD OVER 0.76µm MIN PALLADIUM-NICKEL. ACTION PIN AREA: 0.5µm MIN TIN PLATE, ALL OVER 1.27µm MIN NICKEL UNDERPLATE.
- 3 FINISH: CONTACT LUBRICATION WITH BELLCORE APPROVED LUBRICANT. TECHNICAL REFERENCE: GR-1217-CORE, ISSUE 1, NOVEMBER 1995.
- 4 THE 10.26±0.13 DIMENSION APPLIES IN THIS AREA.
- 5 REFERENCE APPLICATION SPEC 114-1103 FOR RECOMMENDED PLATED THRU HOLE DIAMETER AND PLATING THICKNESS.
- 6. CURRENT RATING 10A/CONTACT PER PRODUCT SPEC 108-1651.



SECTION W-W
SCALE 40:1



RECOMMENDED PCB HOLE LAYOUT

| FINISH | POSITIONS LOADED WITH 10.90 CONTACTS (2) | POSITIONS LOADED WITH 9.30 CONTACTS (3) | POSITIONS LOADED WITH 7.68 CONTACTS (4) | NO OF LOADED POSITIONS | PART NUMBER |
|--------|--|---|---|------------------------|-------------|
| 2,3 | - | A,B,C,D | E,F | 6 | 5646956-6 |
| 2,3 | A,B | D,E,F | C | 6 | 5646956-5 |
| 2,3 | A,D,E,F | B | C | 6 | 5646956-4 |
| 2,3 | A,B | C,D | E,F | 6 | 5646956-3 |
| 2,3 | A,F | B,C,D,E | - | 6 | 5646956-2 |
| 2,3 | A,B,C,D,E,F | - | - | 6 | 5646956-1 |

THIS DRAWING IS A CONTROLLED DOCUMENT.

| | | | |
|----------------|--|---------------------------|--|
| DIMENSIONS: mm | TOLERANCES UNLESS OTHERWISE SPECIFIED: | DIN B CARBO 04JAN05 | STE TE Connectivity |
| 0 PLC ± - | 1 PLC ± - | CHK R PATTERSON 04JAN05 | NAME ASSEMBLY, RIGHT ANGLE HEADER, W/ RETENTION PEGS, UNIVERSAL POWER MODULE |
| 2 PLC ± 0.13 | 3 PLC ± - | APP'D R PATTERSON 04JAN05 | SIZE A1 |
| 4 PLC ± - | ANGLES ± - | APPLICATION SPEC | SCALE 6:1 |
| MATERIAL 1 | FINISH 2 | WEIGHT - | DRAWING NO 00779 |
| | | | REV 1 |

CUSTOMER DRAWING SHEET 1 OF 1